

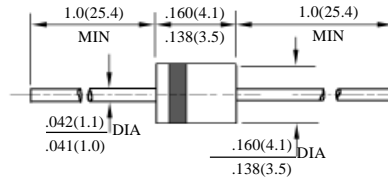
FR251 – FR257P

2.5A 快速二极管

2.5A FAST RECOVERY DIODES

型号 TYPE	最大反向 峰值电压 Maximum Peak Reverse Voltage	最大平均正向电流 Maximum Average Rectified Current @ Half-Wave Resistive Load 60Hz		最大正向浪涌电流 Maximum Forward Peak Surge Current @ 8.3ms Superimposed	最大反向漏电流 Maximum Reverse Current @ PRV @ T _A =25°C	最大正向电压 Maximum Forward Voltage @ T _A =25°C		最大反向 恢复时间 Maximum Reverse Recovery Time	外型尺寸 Package Dimensions
	PRV	I _O @ T _L		I _{FM} (Surge)	I _R	I _{FM}	V _{FM}	T _{rr}	
	V _{PK}	A _{AV}	°C	A _{PK}	µA _{dc}	A _{PK}	V _{PK}	ns	
FR251	50	2.5	75	150	5.0	2.5	1.3	150	R - 3
FR252	100							150	
FR253	200							150	
FR254	400							150	
FR255	600							250	
FR256	800							500	
FR257	1000							500	
FR257P	1000							250	

 Trr测试条件: I_F = 0.5A, I_R = 1.0A, I_{RR} = 0.25A

 Trr Test Conditions: I_F = 0.5A, I_R = 1.0A, I_{RR} = 0.25A


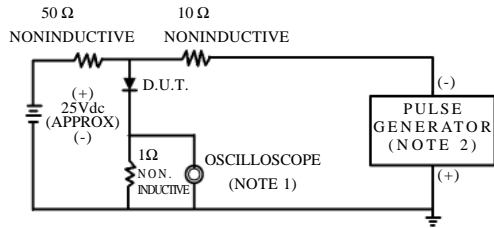
R - 3

FR251 – FR257P

2.5A 快速二极管额定值与特性曲线

RATING & CHARACTERISTIC CURVES OF 2.5A FAST DIODES

FIG.1-TEST CIRCUIT DIAGRAM AND REVERSE RECOVERY TIME CHARACTERISTIC



NOTES: 1. Rise Time=7ns max.
Input Impedance=1megohm.22pF.
2. Rise Time=10ns max.
Source Impedance=50 ohms.

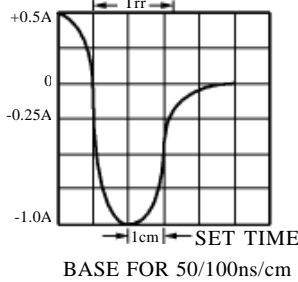


FIG. 2 – TYPICAL FORWARD CURRENT DERATING CURVE

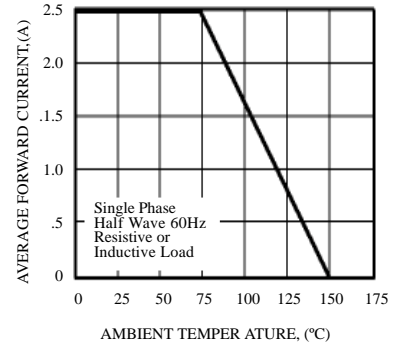


FIG. 3 – TYPICAL INSTANTANEOUS FORWARD CHARACTERISTICS

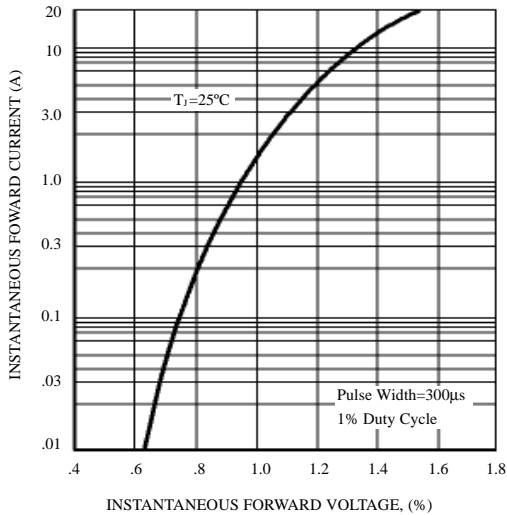


FIG. 4 – MAXIMUM NON-REPETITIVE FORWARD SURGE CURRENT

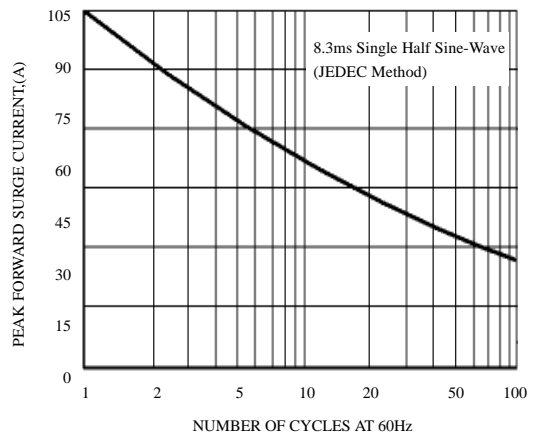


FIG. 5 – TYPICAL JUNCTION CAPACITANCE

