

FR101 THRU FR107	
1.0 AMP. Fast Recovery Rectifiers	
<p>Features</p> <ul style="list-style-type: none"> • Low forward voltage drop • High current capability • High reliability • High surge current capability 	<p>Voltage Range 50 to 1000 Volts Current 1.0 Ampere</p> <p>DO-41</p>
<p>Mechanical Data</p> <ul style="list-style-type: none"> • Cases: Molded plastic • Epoxy: UL 94V-0 rate flame retardant • Lead: Axial leads, solderable per MIL-STD-202, Method 208 guaranteed • Polarity: Color band denotes cathode end • High temperature soldering guaranteed: 250°C/10 seconds/.375", (9.5mm) lead lengths at 5 lbs., (2.3kg) tension • Weight: 0.34 gram 	<p>Dimensions in inches and (millimeters)</p>

Maximum Ratings and Electrical Characteristics

Rating at 25°C ambient temperature unless otherwise specified.

Single phase, half wave, 60 Hz, resistive or inductive load.

For capacitive load, derate current by 20%

Symbols	FR101	FR102	FR103	FR104	FR105	FR106	FR107	Units
Maximum Recurrent Peak Reverse Voltage	50	100	200	400	600	800	1000	V
Maximum RMS Voltage	35	70	140	280	420	560	700	V
Maximum DC Blocking Voltage	50	100	200	400	600	800	1000	V
Maximum Average Forward Rectified Current .375" (9.5mm) Lead Length @ T _A = 55°C	1.0							A
Peak Forward Surge Current, 8.3 ms Single Half Sine-wave Superimposed on Rated Load (JEDEC method)	30							A
Maximum Instantaneous Forward Voltage @ 1.0A	1.2							V
Maximum DC Reverse Current @ T _A =25°C at Rated DC Blocking Voltage @ T _A =100°C	5.0 100							uA uA
Maximum Reverse Recovery Time (Note 1)	150		250		500			nS
Typical Junction Capacitance (Note 2)	15							pF
Operating Temperature Range T _J	-65 to +125							°C
Storage Temperature Range T _{STG}	-65 to +150							°C

Notes: 1. Reverse Recovery Test Conditions: I_F=0.5A, I_R=1.0A, I_{RR}=0.25A

2. Measured at 1 MHz and Applied Reverse Voltage of 4.0 Volts D.C.

RATINGS AND CHARACTERISTIC CURVES (FR101 THRU FR107)

FIG. 1- MAXIMUM FORWARD CURRENT DERATING CURVE

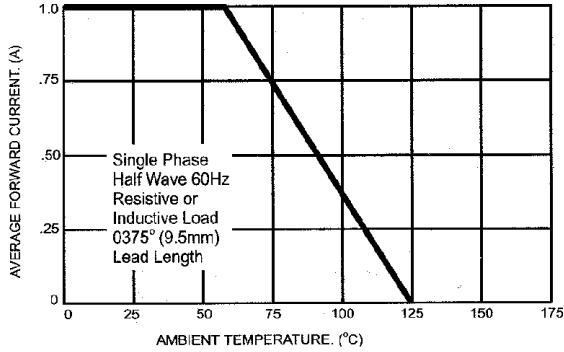


FIG. 2- MAXIMUM NON-REPETITIVE FORWARD SURGE CURRENT

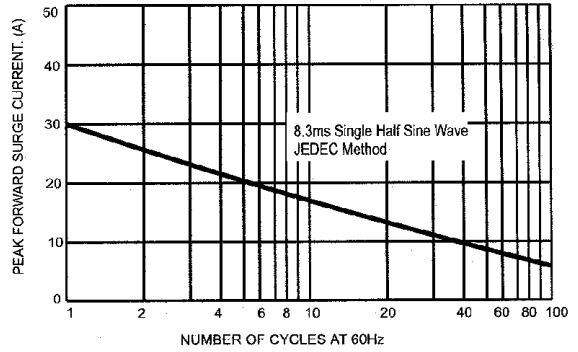


FIG. 3- TYPICAL FORWARD CHARACTERISTICS

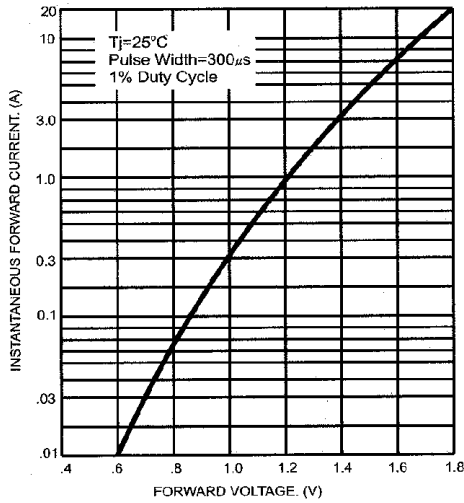


FIG. 4- TYPICAL JUNCTION CAPACITANCE

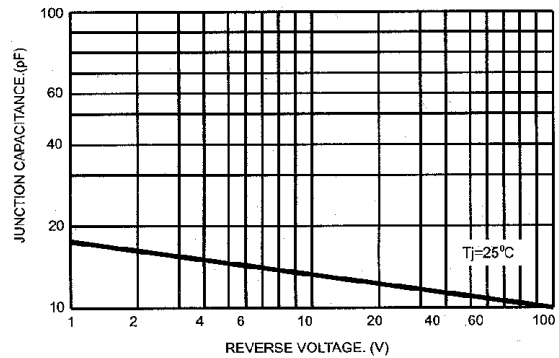
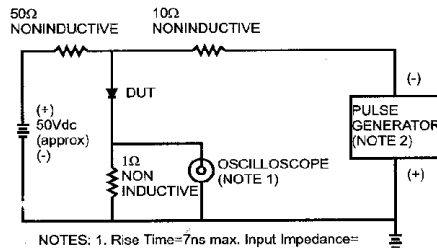


FIG. 5- REVERSE RECOVERY TIME CHARACTERISTIC AND TEST CIRCUIT DIAGRAM



NOTES: 1. Rise Time = 7ns max. Input Impedance = 1 megohm 22pf
2. Rise Time = 10ns max. Source Impedance = 50 ohms

