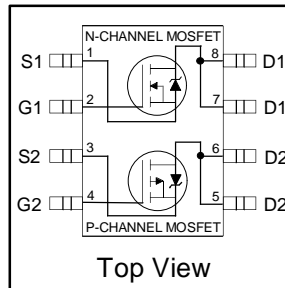


## HEXFET® Power MOSFET

- Advanced Process Technology
- Ultra Low On-Resistance
- Dual N and P Channel Mosfet
- Surface Mount
- Available in Tape & Reel
- Dynamic dv/dt Rating
- Fast Switching

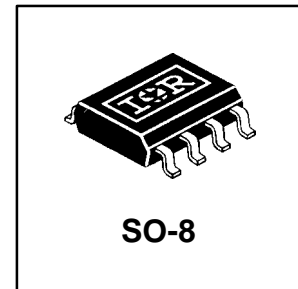


|              | N-Ch           | P-Ch           |
|--------------|----------------|----------------|
| $V_{DSS}$    | 20V            | -20V           |
| $R_{DS(on)}$ | 0.125 $\Omega$ | 0.160 $\Omega$ |
| $I_D$        | 3.0A           | -2.8A          |

### Description

Fourth Generation HEXFETs from International Rectifier utilize advanced processing techniques to achieve the lowest possible on-resistance per silicon area. This benefit, combined with the fast switching speed and ruggedized device design for which HEXFET Power MOSFETs are well known, provides the designer with an extremely efficient device for use in a wide variety of applications.

The SO-8 has been modified through a customized leadframe for enhanced thermal characteristics and multiple-die capability making it ideal in a variety of power applications. With these improvements, multiple devices can be used in an application with dramatically reduced board space. The package is designed for vapor phase, infra-red, or wave soldering techniques. Power dissipation of greater than 0.8W is possible in a typical PCB mount application.



### Absolute Maximum Ratings

|                                  |  | Max.         |           |                  |
|----------------------------------|--|--------------|-----------|------------------|
|                                  |  | N-Channel    | P-Channel |                  |
| $I_D$ @ $T_C = 25^\circ\text{C}$ | Continuous Drain Current, $V_{GS}$ @ 10V           | 3.0          | -2.8      | A                |
| $I_D$ @ $T_C = 70^\circ\text{C}$ | Continuous Drain Current, $V_{GS}$ @ 10V           | 2.5          | -2.3      |                  |
| $I_{DM}$                         | Pulsed Drain Current $\text{\textcircled{1}}$      | 10           | -10       |                  |
| $P_D$ @ $T_C = 25^\circ\text{C}$ | Power Dissipation                                  | 2.0          |           |                  |
|                                  | Linear Derating Factor                             | 0.016        |           |                  |
| $V_{GS}$                         | Gate-to-Source Voltage                             | $\pm 20$     |           | V                |
| dv/dt                            | Peak Diode Recovery dv/dt $\text{\textcircled{2}}$ | 3.0          | -1.3      | V/ns             |
| $T_J, T_{STG}$                   | Junction and Storage Temperature Range             | -55 to + 150 |           | $^\circ\text{C}$ |

### Thermal Resistance

|                 | Parameter                         | Min. | Typ. | Max. | Units |
|-----------------|-----------------------------------|------|------|------|-------|
| $R_{\theta JA}$ | Junction-to-Ambient (PCB Mount)** | —    | —    | 62.5 |       |

\*\* When mounted on 1" square PCB (FR-4 or G-10 Material).  
For recommended footprint and soldering techniques refer to application note #AN-994.

## Electrical Characteristics @ T<sub>J</sub> = 25°C (unless otherwise specified)

| Parameter                              | Description                          |      | Min. | Typ.  | Max.  | Units | Conditions  |    |   |
|--|--------------------------------------|------|------|-------|-------|-------|---|----|---|
|  |                                      |      |      |       |       |       |   |    |   |
| V <sub>(BR)DSS</sub>                   | Drain-to-Source Breakdown Voltage    | N-Ch | 20   | —     | —     | V     | V <sub>GS</sub> = 0V, I <sub>D</sub> = 250μA  |    |   |
|  |                                      | P-Ch | -20  | —     | —     |       | V <sub>GS</sub> = 0V, I <sub>D</sub> = -250μA   |    |   |
| ΔV <sub>(BR)DSS</sub> /ΔT <sub>J</sub> | Breakdown Voltage Temp. Coefficient  | N-Ch | —    | 0.037 | —     | V/°C  | Reference to 25°C, I <sub>D</sub> = 1mA   |    |   |
|  |                                      | P-Ch | —    | 0.015 | —     |       | Reference to 25°C, I <sub>D</sub> = -1mA  |    |   |
| R <sub>DS(ON)</sub>                    | Static Drain-to-Source On-Resistance | N-Ch | —    | —     | 0.125 | Ω     | V <sub>GS</sub> = 10V, I <sub>D</sub> = 3.0A ③  |    |   |
|  |                                      |      | —    | —     | 0.250 |       | V <sub>GS</sub> = 4.5V, I <sub>D</sub> = 1.50A ③  |    |   |
|  |                                      | P-Ch | —    | —     | 0.160 |       | V <sub>GS</sub> = -10V, I <sub>D</sub> = -3.0A ③  |    |   |
|  |                                      |      | —    | —     | 0.300 |       | V <sub>GS</sub> = -4.5V, I <sub>D</sub> = -1.5A ③   |    |   |
| V <sub>GS(th)</sub>                    | Gate Threshold Voltage               | N-Ch | 1.0  | —     | —     | V     | V <sub>DS</sub> = V <sub>GS</sub> , I <sub>D</sub> = 250μA  |    |   |
|  |                                      | P-Ch | -1.0 | —     | —     |       | V <sub>DS</sub> = V <sub>GS</sub> , I <sub>D</sub> = -250μA   |    |   |
| g <sub>fs</sub>                        | Forward Transconductance             | N-Ch | —    | 4.4   | —     | S     | V <sub>DS</sub> = 15V, I <sub>D</sub> = 3.0A ③  |    |   |
|  |                                      | P-Ch | —    | 3.3   | —     |       | V <sub>DS</sub> = -15V, I <sub>D</sub> = -3A ③  |    |   |
| I <sub>DSS</sub>                       | Drain-to-Source Leakage Current      | N-Ch | —    | —     | 2.0   | μA    | V <sub>DS</sub> = 16V, V <sub>GS</sub> = 0V   |    |   |
|  |                                      | P-Ch | —    | —     | -2.0  |       | V <sub>DS</sub> = -16V, V <sub>GS</sub> = 0V  |    |   |
|  |                                      | N-Ch | —    | —     | 25    |       | V <sub>DS</sub> = 16V, V <sub>GS</sub> = 0V, T <sub>J</sub> = 125°C   |    |   |
|  |                                      | P-Ch | —    | —     | -25   |       | V <sub>DS</sub> = -16V, V <sub>GS</sub> = 0V, T <sub>J</sub> = 125°C  |    |   |
| I <sub>GSS</sub>                       | Gate-to-Source Forward Leakage       | N-P  | —    | —     | ±100  | nA    | V <sub>GS</sub> = ± 20V   |    |   |
| Q <sub>g</sub>                         | Total Gate Charge                    | N-Ch | —    | 9.1   | 25    | nC    | N-Channel<br>I <sub>D</sub> = 2.3A, V <sub>DS</sub> = 10V, V <sub>GS</sub> = 10V ③                            |    |   |
| P-Ch                                   | —                                    | 11   | 25   |       |       |       |   |    |   |
| Q <sub>gs</sub>                        | Gate-to-Source Charge                | N-Ch | —    | 1.2   | —     | nC    | P-Channel<br>I <sub>D</sub> = -2.3A, V <sub>DS</sub> = -10V, V <sub>GS</sub> = -10V ③                         |    |   |
| P-Ch                                   | —                                    | 1.8  | —    |       |       |       |   |    |   |
| Q <sub>gd</sub>                        | Gate-to-Drain ("Miller") Charge      | N-Ch | —    | 2.5   | —     | nC    | P-Channel<br>I <sub>D</sub> = -2.3A, V <sub>DS</sub> = -10V, V <sub>GS</sub> = -10V ③                         |    |   |
| P-Ch                                   | —                                    | 3.5  | —    |       |       |       |   |    |   |
| t <sub>d(on)</sub>                     | Turn-On Delay Time                   | N-Ch | —    | 5.0   | 15    | ns    | N-Channel<br>V <sub>DD</sub> = 20V, I <sub>D</sub> = 1.0A, R <sub>G</sub> = 6.0Ω,<br>R <sub>D</sub> = 20Ω ③   |    |   |
| P-Ch                                   | —                                    | 12   | 40   |       |       |       |   |    |   |
| t <sub>r</sub>                         | Rise Time                            | N-Ch | —    | 10    | 20    | ns    | P-Channel<br>V <sub>DD</sub> = -20V, I <sub>D</sub> = -1.0A, R <sub>G</sub> = 6.0Ω,<br>R <sub>D</sub> = 20Ω ③ |    |   |
| P-Ch                                   | —                                    | 19   | 40   |       |       |       |   |    |   |
| t <sub>d(off)</sub>                    | Turn-Off Delay Time                  | N-Ch | —    | 29    | 50    | ns    | P-Channel<br>V <sub>DD</sub> = -20V, I <sub>D</sub> = -1.0A, R <sub>G</sub> = 6.0Ω,<br>R <sub>D</sub> = 20Ω ③ |    |   |
| P-Ch                                   | —                                    | 42   | 90   |       |       |       |   |    |   |
| t <sub>f</sub>                         | Fall Time                            | N-Ch | —    | 22    | 50    | ns    | P-Channel<br>V <sub>DD</sub> = -20V, I <sub>D</sub> = -1.0A, R <sub>G</sub> = 6.0Ω,<br>R <sub>D</sub> = 20Ω ③ |    |   |
| P-Ch                                   | —                                    | 42   | 63   |       |       |       |   |    |   |
| L <sub>D</sub>                         | Internal Drain Inductance            | N-P  | —    | 4.0   | —     | nH    | Between lead tip<br>and center of die contact   |    |   |
| L <sub>S</sub>                         | Internal Source Inductance           | N-P  | —    | 6.0   | —     |       |   |    |   |
| C <sub>iss</sub>                       | Input Capacitance                    | N-Ch | —    | 300   | —     | pF    | N-Channel<br>V <sub>GS</sub> = 0V, V <sub>DS</sub> = 15V, f = 1.0MHz ③  |    |   |
|  |                                      | P-Ch | —    | 320   | —     |       |   |    |   |
| C <sub>oss</sub>                       | Output Capacitance                   | N-Ch | —    | 260   | —     |       |   | pF | P-Channel<br>V <sub>GS</sub> = 0V, V <sub>DS</sub> = -15V, f = 1.0MHz ③ |
|  |                                      | P-Ch | —    | 300   | —     |       |   |    |   |
| C <sub>rss</sub>                       | Reverse Transfer Capacitance         | N-Ch | —    | 62    | —     | pF    | P-Channel<br>V <sub>GS</sub> = 0V, V <sub>DS</sub> = -15V, f = 1.0MHz ③                                       |    |   |
|  |                                      | P-Ch | —    | 95    | —     |       |   |    |   |

## Source-Drain Ratings and Characteristics

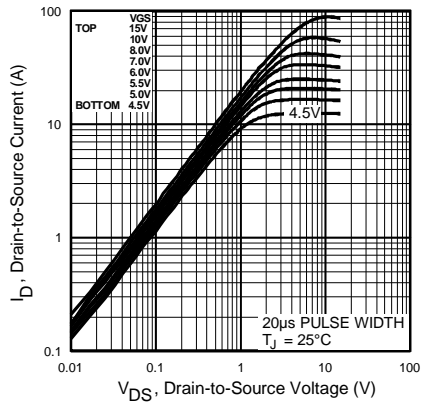
| Parameter       | Description                            |      | Min.   | Typ. | Max. | Units | Conditions   |
|-----------------|--|------|--|------|------|-------|--|
| I <sub>S</sub>  | Continuous Source Current (Body Diode) | N-Ch | —  | —    | 1.7  | A     |  |
|                 |  | P-Ch | —  | —    | -1.6 |       |  |
| I <sub>SM</sub> | Pulsed Source Current (Body Diode) ①   | N-Ch | —  | —    | 10   | A     |  |
|                 |  | P-Ch | —  | —    | -10  |       |  |
| V <sub>SD</sub> | Diode Forward Voltage                  | N-Ch | —  | 0.90 | 1.2  | V     | T <sub>J</sub> = 25°C, I <sub>S</sub> = 1.7A, V <sub>GS</sub> = 0V ③           |
|                 |  | P-Ch | —  | -1.4 | -1.6 |       | T <sub>J</sub> = 25°C, I <sub>S</sub> = -1.3A, V <sub>GS</sub> = 0V ③          |
| t <sub>rr</sub> | Reverse Recovery Time                  | N-Ch | —  | 69   | 100  | ns    | N-Channel<br>T <sub>J</sub> = 25°C, I <sub>F</sub> = 1.25A, di/dt = 100A/μs ③  |
|                 |  | P-Ch | —  | 69   | 100  |       |  |
| Q <sub>rr</sub> | Reverse Recovery Charge                | N-Ch | —  | 58   | 120  | nC    | P-Channel<br>T <sub>J</sub> = 25°C, I <sub>F</sub> = -1.25A, di/dt = 100A/μs ③ |
|                 |  | P-Ch | —  | 64   | 96   |       |  |
| t <sub>on</sub> | Forward Turn-On Time                   | N-P  | Intrinsic turn-on time is negligible (turn-on is dominated by L <sub>S</sub> +L <sub>D</sub> ) |      |      |       |  |

### Notes:

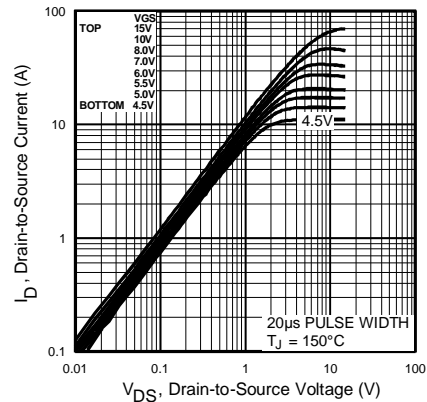
① Repetitive rating; pulse width limited by max. junction temperature. ( See fig. 11 )

② N-Channel I<sub>SD</sub> ≤ 2.3A, di/dt ≤ 100A/μs, V<sub>DD</sub> ≤ V<sub>(BR)DSS</sub>, T<sub>J</sub> ≤ 150°C  
P-Channel I<sub>SD</sub> ≤ -1.25A, di/dt ≤ 50A/μs, V<sub>DD</sub> ≤ V<sub>(BR)DSS</sub>, T<sub>J</sub> ≤ 150°C

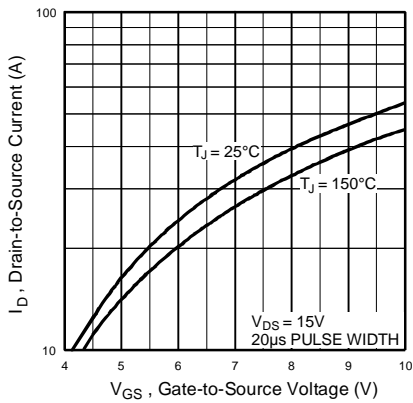
③ Pulse width ≤ 300μs; duty cycle ≤ 2%.



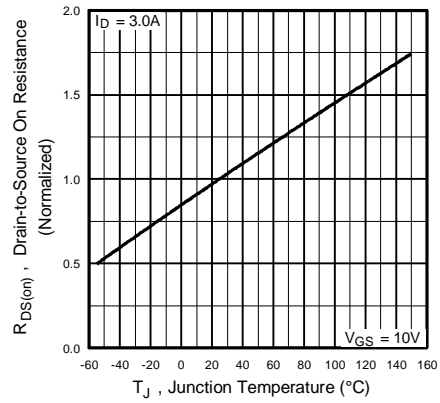
**Fig 1.** Typical Output Characteristics,  $T_J = 25^\circ\text{C}$



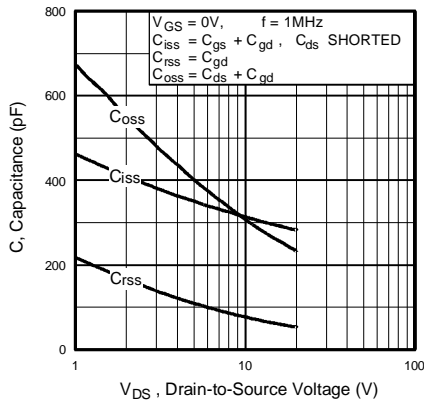
**Fig 2.** Typical Output Characteristics,  $T_J = 150^\circ\text{C}$



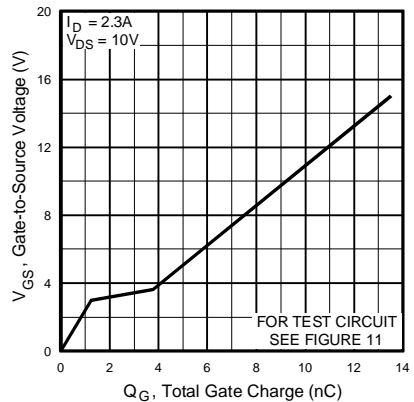
**Fig 3.** Typical Transfer Characteristics



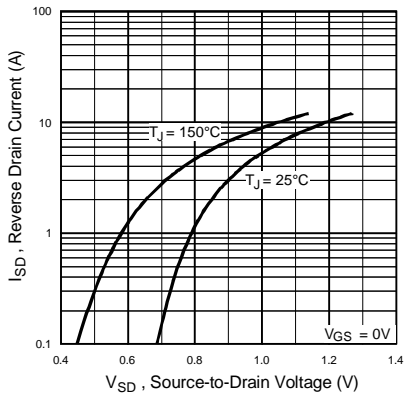
**Fig 4.** Normalized On-Resistance Vs. Temperature



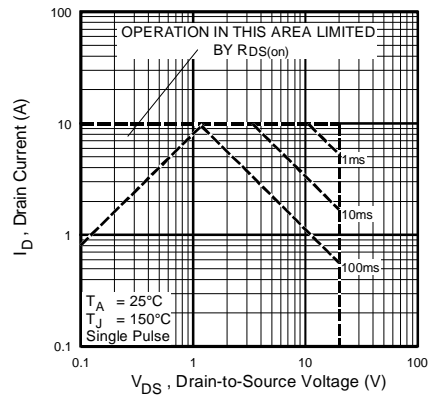
**Fig 5.** Typical Capacitance Vs. Drain-to-Source Voltage



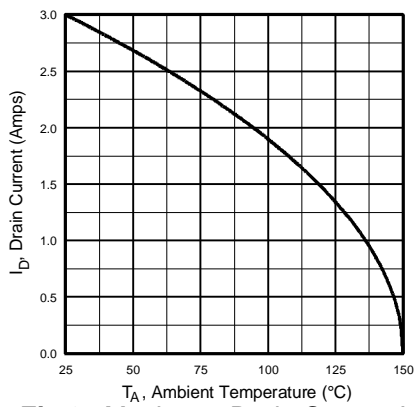
**Fig 6.** Typical Gate Charge Vs. Gate-to-Source Voltage



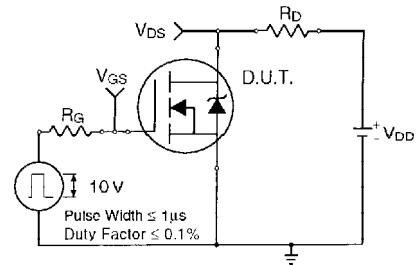
**Fig 7.** Typical Source-Drain Diode Forward Voltage



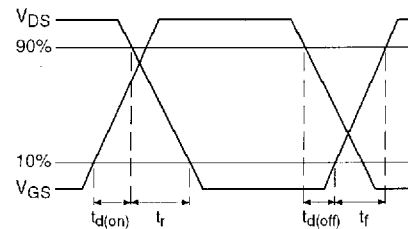
**Fig 8.** Maximum Safe Operating Area



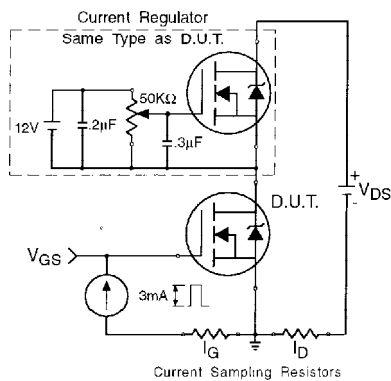
**Fig 9.** Maximum Drain Current Vs. Ambient Temperature



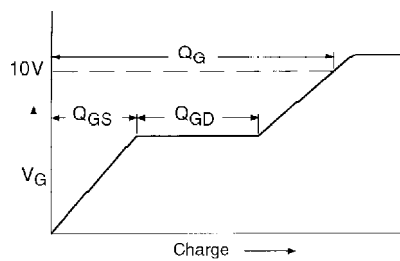
**Fig 10a.** Switching Time Test Circuit



**Fig 10b.** Switching Time Waveforms



**Fig 11a.** Gate Charge Test Circuit



**Fig 11b.** Basic Gate Charge Waveform

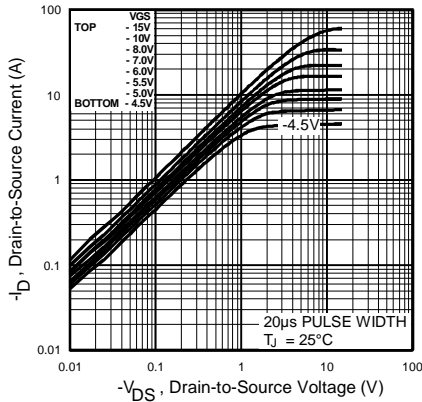


Fig 12. Typical Output Characteristics,  $T_J = 25^\circ\text{C}$

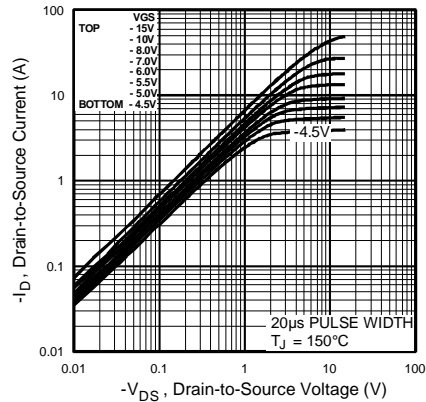


Fig 13. Typical Output Characteristics,  $T_J = 150^\circ\text{C}$

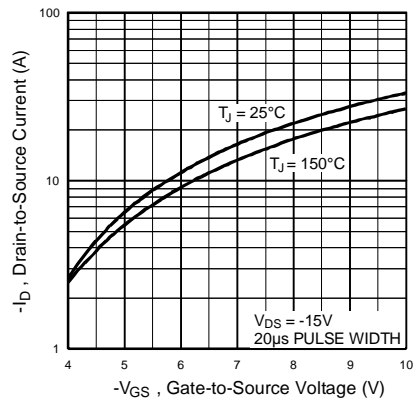


Fig 14. Typical Transfer Characteristics

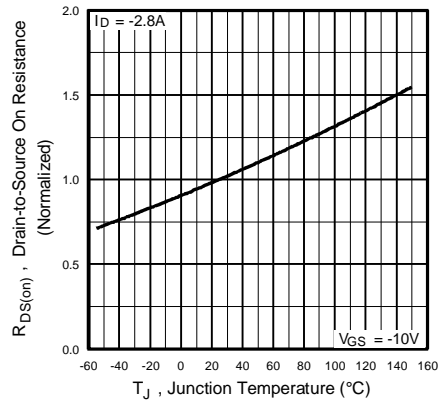


Fig 15. Normalized On-Resistance Vs. Temperature

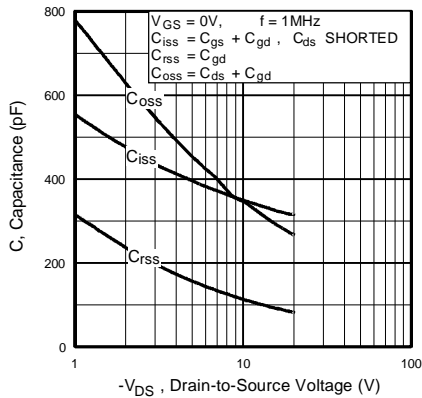


Fig 16. Typical Capacitance Vs. Drain-to-Source Voltage

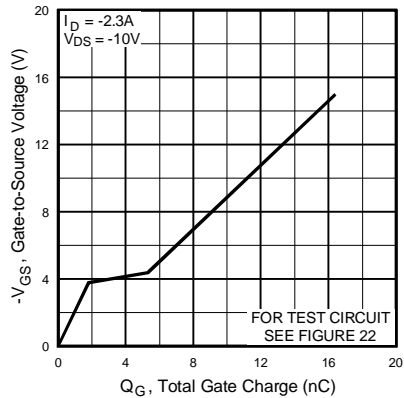
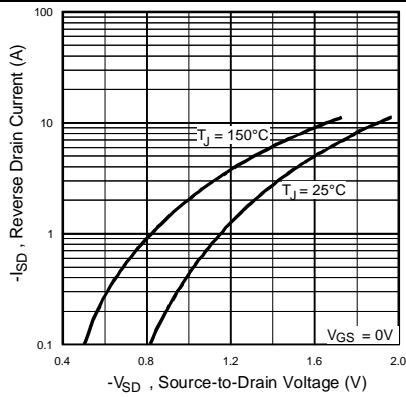
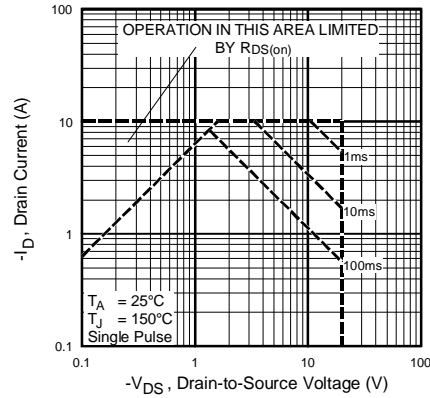


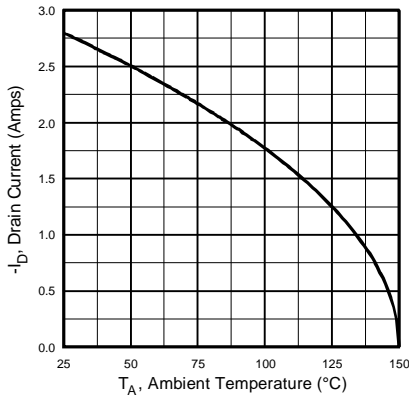
Fig 17. Typical Gate Charge Vs. Gate-to-Source Voltage



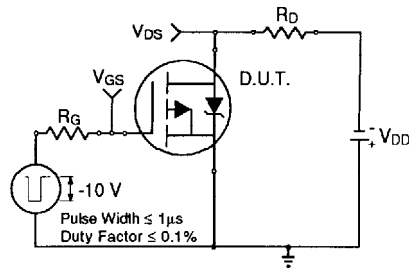
**Fig 18.** Typical Source-Drain Diode Forward Voltage



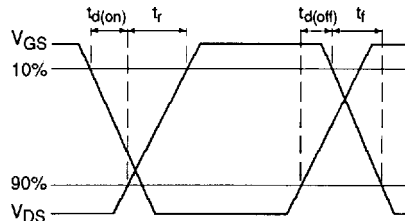
**Fig 19.** Maximum Safe Operating Area



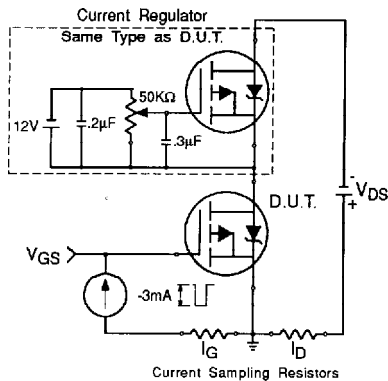
**Fig 20.** Maximum Drain Current Vs. Ambient Temperature



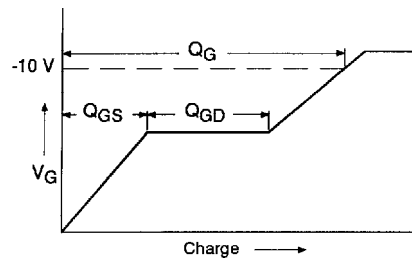
**Fig 21a.** Switching Time Test Circuit



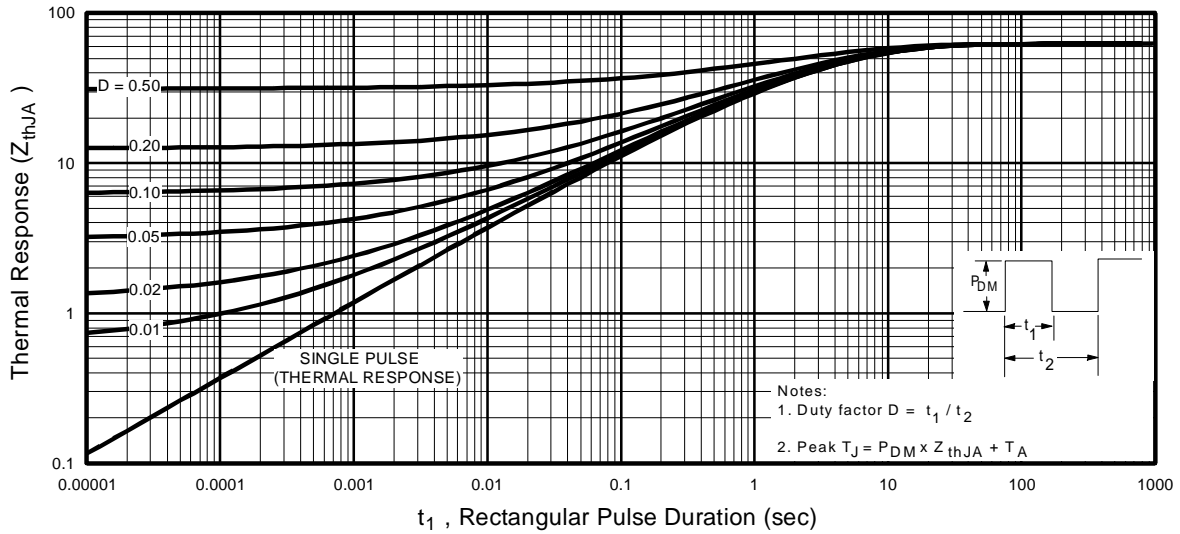
**Fig 21b.** Switching Time Waveforms



**Fig 22a.** Gate Charge Test Circuit



**Fig 22b.** Basic Gate Charge Waveform



**Fig 23.** Maximum Effective Transient Thermal Impedance, Junction-to-Ambient

Refer to the Appendix Section for the following:

**Appendix A:** Figure 24, Peak Diode Recovery  $dv/dt$  Test Circuit — See page 329.

**Appendix B:** Package Outline Mechanical Drawing — See page 332.

**Appendix C:** Part Marking Information — See page 332.

**Appendix D:** Tape and Reel Information — See page 336.