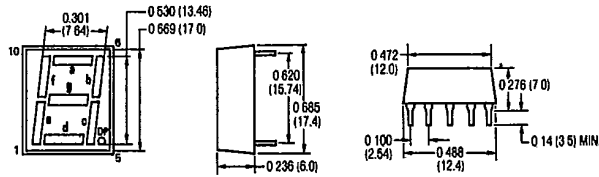


HIGH EFFICIENCY & ULTRA BRIGHT NUMERICS

.53" DIGIT SIZE - R.H.D.P.

T-41-33

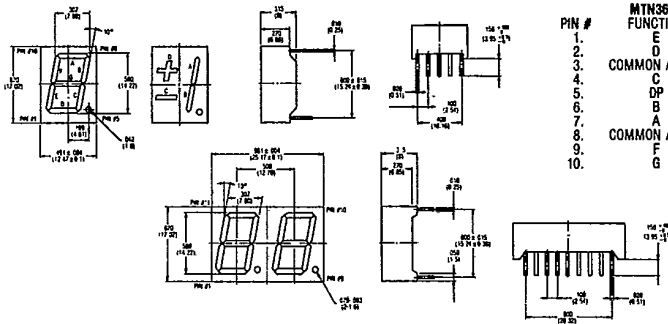
PART NO.	MATERIAL	PEAK WAVE-LENGTH λ_p (nm)	EMITTED COLOR	MAXIMUM RATINGS					OPTO-ELECTRICAL CHARACTERISTICS							
				I_F (DC/seg.) (mA)	I_F (pp/seg.) (mA)	V_R (V)	T_{opr} (°C)	T_{stg} (°C)	$V_F(I_F \text{ at } 10 \text{ mA})$ (V)			I_R (μ A)	V_R (V)	I_y (per seg.) (mcd)		
									min.	typ.	max.			min.	typ.	at mA
MTN3580-CHR	GaAsP/GaP	635	Red	20	110	6	-35 ~ 85	-40 ~ 85	1.7	2.0	2.5	5	6	.52	1.56	10
MTN3590-AHR	GaAsP/GaP	635	Red	20	110	6	-35 ~ 85	-40 ~ 85	1.7	2.0	2.5	5	6	.52	1.56	10
MTN3580-CUR	GaAlAs	660	Red	20	110	6	-35 ~ 85	-40 ~ 85	1.4	1.7	2.1	5	6	.88	2.64	10
MTN3590-AUR	GaAlAs	660	Red	20	110	6	-35 ~ 85	-40 ~ 85	1.4	1.7	2.1	5	6	.88	2.64	10



- | | |
|---|---|
| <p>MTN3580
COMMON CATHODE</p> <p>PIN # FUNCTION</p> <ol style="list-style-type: none"> 1. ANODE E 2. ANODE D 3. ANODE C 4. ANODE DP 5. COMMON CATHODE 6. COMMON CATHODE 7. ANODE B 8. ANODE A 9. ANODE G 10. ANODE F | <p>MTN3590
COMMON ANODE</p> <p>PIN # FUNCTION</p> <ol style="list-style-type: none"> 1. CATHODE E 2. CATHODE D 3. CATHODE C 4. CATHODE DP 5. COMMON ANODE 6. COMMON ANODE 7. CATHODE B 8. CATHODE A 9. CATHODE G 10. CATHODE F |
|---|---|

.56" DIGIT SIZE - R.H.D.P.

PART NO.	MATERIAL	PEAK WAVE-LENGTH λ_p (nm)	EMITTED COLOR	MAXIMUM RATINGS					OPTO-ELECTRICAL CHARACTERISTICS							
				I_F (DC/seg.) (mA)	I_F (pp/seg.) (mA)	V_R (V)	T_{opr} (°C)	T_{stg} (°C)	$V_F(I_F \text{ at } 10 \text{ mA})$ (V)			I_R (μ A)	V_R (V)	I_y (per seg.) (mcd)		
									min.	typ.	max.			min.	typ.	at mA
MTN3620-CHR	GaAsP/GaP	635	Red	20	110	6	-40 ~ 85	-40 ~ 85	1.7	2.0	2.5	5	6	.52	1.56	10
MTN3630-AHR	GaAsP/GaP	635	Red	20	110	6	-40 ~ 85	-40 ~ 85	1.7	2.0	2.5	5	6	.52	1.56	10
MTN3640-CHR	GaAsP/GaP	635	Red	20	110	6	-40 ~ 85	-40 ~ 85	1.7	2.0	2.5	5	6	.52	1.56	10
MTN3650-AHR	GaAsP/GaP	635	Red	20	110	6	-40 ~ 85	-40 ~ 85	1.7	2.0	2.5	5	6	.52	1.56	10
MTN3660-CHR	GaAsP/GaP	635	Red	20	110	6	-40 ~ 85	-40 ~ 85	1.7	2.0	2.5	5	6	.52	1.56	10
MTN3670-AHR	GaAsP/GaP	635	Red	20	110	6	-40 ~ 85	-40 ~ 85	1.7	2.0	2.5	5	6	.52	1.56	10
MTN3620-CUR	GaAlAs	660	Red	20	110	6	-40 ~ 85	-40 ~ 85	1.4	1.7	2.1	5	6	.88	2.64	10
MTN3630-AUR	GaAlAs	660	Red	20	110	6	-40 ~ 85	-40 ~ 85	1.4	1.7	2.1	5	6	.88	2.64	10
MTN3640-CUR	GaAlAs	660	Red	20	110	6	-40 ~ 85	-40 ~ 85	1.4	1.7	2.1	5	6	.88	2.64	10
MTN3650-AUR	GaAlAs	660	Red	20	110	6	-40 ~ 85	-40 ~ 85	1.4	1.7	2.1	5	6	.88	2.64	10
MTN3660-CUR	GaAlAs	660	Red	20	110	6	-40 ~ 85	-40 ~ 85	1.4	1.7	2.1	5	6	.88	2.64	10
MTN3670-AUR	GaAlAs	660	Red	20	110	6	-40 ~ 85	-40 ~ 85	1.4	1.7	2.1	5	6	.88	2.64	10



- | | | | | | |
|---|---|--|--|--|---|
| <p>MTN3630
FUNCTION</p> <p>PIN # FUNCTION</p> <ol style="list-style-type: none"> 1. E 2. D 3. COMMON ANODE 4. C 5. DP 6. B 7. A 8. COMMON ANODE 9. F 10. G | <p>MTN3620
FUNCTION</p> <p>PIN # FUNCTION</p> <ol style="list-style-type: none"> 1. E 2. D 3. COMMON CATHODE 4. C 5. DP 6. B 7. A 8. COMMON CATHODE 9. F 10. G | <p>MTN3650
FUNCTION</p> <p>PIN # FUNCTION</p> <ol style="list-style-type: none"> 1. C 2. ANODE C, D 3. B 4. ANODE A, B, DP 5. DP 6. A 7. ANODE A, B, DP 8. ANODE C, D 9. D 10. NO PIN | <p>MTN3640
FUNCTION</p> <p>PIN # FUNCTION</p> <ol style="list-style-type: none"> 1. C 2. CATHODE C, D 3. B 4. CATHODE A, B, DP 5. DP 6. A 7. CATHODE A, B, DP 8. CATHODE C, D 9. D 10. NO PIN | | |
| <p>MTN3660/MTN3670</p> <table border="0"> <tr> <td> <p>PIN # FUNCTION</p> <ol style="list-style-type: none"> 1. E DIGIT 1 2. D DIGIT 1 3. C DIGIT 1 4. DP DIGIT 1 5. E DIGIT 2 6. D DIGIT 2 7. G DIGIT 2 8. C DIGIT 2 9. DP DIGIT 2 </td> <td> <p>PIN # FUNCTION</p> <ol style="list-style-type: none"> 10. B DIGIT 2 11. A DIGIT 2 12. F DIGIT 2 13. DIGIT 2 COMMON 14. DIGIT 1 COMMON 15. B DIGIT 1 16. A DIGIT 1 17. G DIGIT 1 18. F DIGIT 1 </td> </tr> </table> | | | | <p>PIN # FUNCTION</p> <ol style="list-style-type: none"> 1. E DIGIT 1 2. D DIGIT 1 3. C DIGIT 1 4. DP DIGIT 1 5. E DIGIT 2 6. D DIGIT 2 7. G DIGIT 2 8. C DIGIT 2 9. DP DIGIT 2 | <p>PIN # FUNCTION</p> <ol style="list-style-type: none"> 10. B DIGIT 2 11. A DIGIT 2 12. F DIGIT 2 13. DIGIT 2 COMMON 14. DIGIT 1 COMMON 15. B DIGIT 1 16. A DIGIT 1 17. G DIGIT 1 18. F DIGIT 1 |
| <p>PIN # FUNCTION</p> <ol style="list-style-type: none"> 1. E DIGIT 1 2. D DIGIT 1 3. C DIGIT 1 4. DP DIGIT 1 5. E DIGIT 2 6. D DIGIT 2 7. G DIGIT 2 8. C DIGIT 2 9. DP DIGIT 2 | <p>PIN # FUNCTION</p> <ol style="list-style-type: none"> 10. B DIGIT 2 11. A DIGIT 2 12. F DIGIT 2 13. DIGIT 2 COMMON 14. DIGIT 1 COMMON 15. B DIGIT 1 16. A DIGIT 1 17. G DIGIT 1 18. F DIGIT 1 | | | | |

*NOTE: Pulse width = 1 mS; Duty Ratio 1/10.

marktech 120 Broadway • Menands, New York 12204 • (518) 436-5865 • FAX: (518) 436-5877