



FEATURES

- Wide-Range Input Voltage
- Adjustable Output Voltage (60% - 110%)
- Parallel Operation with Load Sharing
- Remote ON/OFF
- Remote Sense
- Power Good Signal
- Synchronization
- Thermal Shutdown
- Constant Frequency
- High Power Density (Up to 54.3 W/in³)

SPECIFICATIONS

INPUT

Voltage/Current	See Model Selection Table
Max. Input Current	9.0 A (24V), 12.0 A (48V) ($V_{in} = 0$ to 72 VDC)
Max. Inrush Transient	2.0 A ² s
Reflected Ripple Current	20 mA (peak-to-peak)
Ripple Rejection	60 dB

OUTPUT

Output Voltage	See Model Selection Table
Set Point	±1%
Regulation	
Line	0.01% (typ.)
Load	0.05% (typ.)
Ripple (RMS)	
3.3V, 5V	40 mV
12V, 15V	80 mV
Noise (peak-to-peak)	
3.3V, 5V	50 mV
12V, 15V	100 mV
	(measured with a 20 MHz bandwidth)
Temperature Drift	±0.01%/°C
Overvoltage Protection	120%
Current Limit Inception	115%
Short Circuit Current	130%
Efficiency	See Model Selection Table

Isolation

Voltage	500 VDC
Capacitance	2000 pf
Resistance	> 10 MΩ

ENVIRONMENTAL

Operating Case Temp.	-40 to +100°C
Storage Temp.	-40 to +110°C

MODEL SPECIFICATIONS

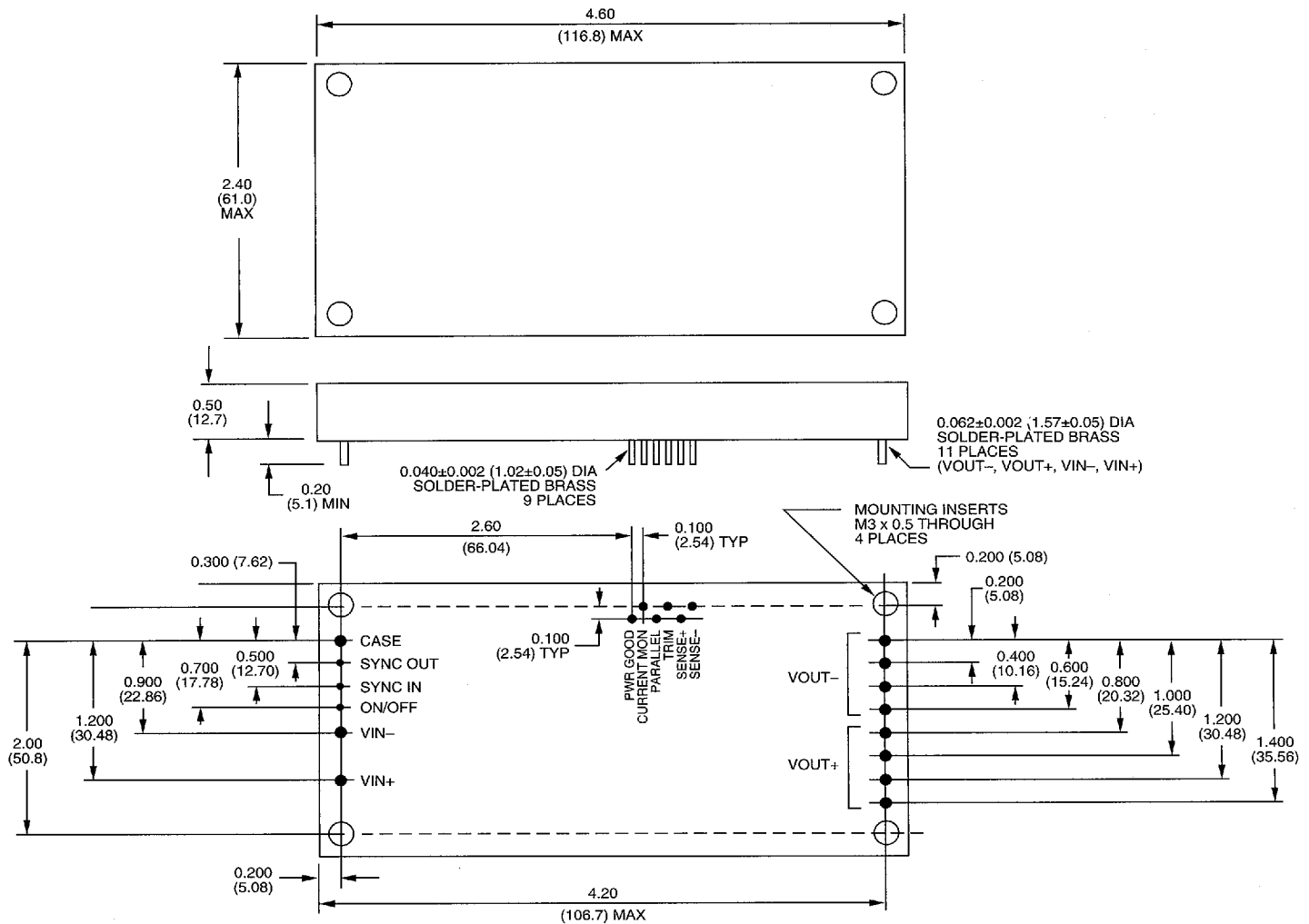
Output		Input Range 24 (18-36) VDC	
Volts	Amps	Model	Effic.
2.0 VDC	0 - 30A	HWE02050	69%
3.3 VDC	0 - 30A	HWE03050	78%
5.0 VDC	0 - 30A	HWE05050	83%
12.0 VDC	0 - 12.5A	HWE12021	84%
24.0 VDC	0 - 10A	HWE24010	84%

Output		Input Range 48 (36-72) VDC	
Volts	Amps	Model	Effic.
2.0 VDC	0 - 60A	HWG02060	69%
3.3 VDC	0 - 60A	HWG03060	78%
5.0 VDC	0 - 60A	HWG05060	83%
12.0 VDC	0 - 25A	HWG12025	87%
24.0 VDC	0 - 12.5A	HWG24015	87%

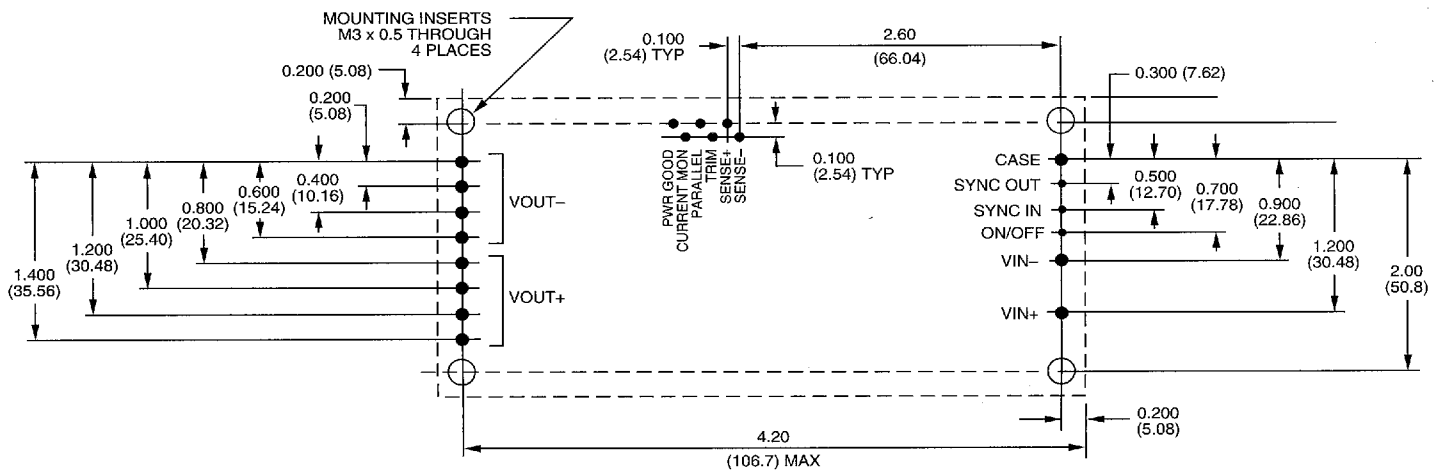
8219387 0004060 757

MECHANICAL SPECIFICATIONS

Size (W x D x H) 4.60 x 2.40 x 0.50 inches (116.8 x 61 x 12.7 mm)
 Weight 10 oz. (300 g)



RECOMMENDED HOLE PATTERN



Dimensions in inches; () Dimensions in mm.

8219387 0004061 693

For further product information call: West:1-800-634-3654, East:1-800-543-6525