

Inductors

High Current, Surface Mount



FEATURES

- High energy storage.
- Low resistance.
- Tape and reel packaging for automatic handling.

ELECTRICAL SPECIFICATIONS

Inductance Range: 10.0 μ H to 470 μ H, tested at 0.1 Vrms.

Inductance Tolerance: 20%.

Operating Temperature: - 20°C to + 80°C.

Storage Temperature: - 25°C to 85°C.

Resistance to Solder Heat: 260°C for 10 seconds.

MATERIALS

Core: Ferrite.

Wire: Enamelled copper wire.

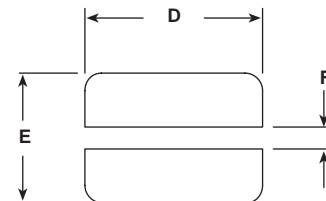
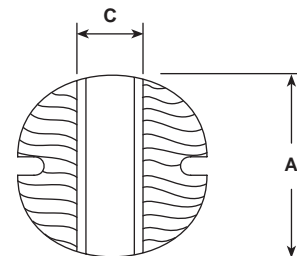
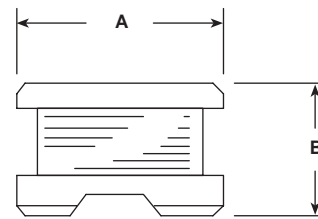
Terminal: Ag + Ni + Sn/Pb.

STANDARD ELECTRICAL SPECIFICATIONS			
INDUCTANCE (μ H)	TEST FREQUENCY L (KHz)	DCR MAXIMUM (Ohms)	RATED DC CURRENT* (A)
10.0	100K	0.07	2.30
12.0	100K	0.08	2.00
15.0	100K	0.09	1.80
18.0	100K	0.10	1.60
22.0	100K	0.11	1.50
27.0	100K	0.12	1.30
33.0	100K	0.14	1.20
39.0	100K	0.16	1.10
47.0	100K	0.20	1.00
56.0	100K	0.24	0.94
68.0	100K	0.30	0.85
82.0	100K	0.37	0.78
100.0	100K	0.45	0.72
120.0	100K	0.48	0.66
150.0	100K	0.68	0.58
180.0	100K	0.77	0.51
220.0	100K	0.96	0.49
270.0	100K	1.11	0.42
330.0	100K	1.26	0.40
390.0	100K	1.77	0.36
470.0	100K	1.96	0.34

*40°C temperature rise.

HOW TO ORDER		
IDCP-3020 MODEL	10 μ H INDUCTANCE VALUE	\pm 20% INDUCTANCE TOLERANCE

DIMENSIONAL CONFIGURATIONS



[Numbers in brackets indicate millimeters]

A	B	C
.296 \pm .01 [7.5 \pm 0.3]	.197 \pm .01 [5.0 \pm 0.3]	0.102 [2.6]
D	E	F
0.315 [8.0]	0.307 [7.8]	0.102 [2.6]