



LA4510

240mW AF Power Amplifier

Applications

- Especially suited for use in 3V micro cassette recorder, mini cassette recorder, headphone stereo applications.

Features

- Operating supply voltage range : 2 to 5V.
- Low current dissipation (7mA typ/ $V_{CC}=3V$).
- Output power :
240mW typ at $V_{CC}=3V$, $R_L=4\Omega$, THD=10%
40mW typ at $V_{CC}=3V$, $R_L=32\Omega$, THD=10%
- Built-in muting circuit to be operated at the time of power switch ON capable of varying starting time and making pop noise low.
- Soft clipping.

Specifications

Absolute Maximum Ratings at $T_a = 25^\circ C$

Parameter	Symbol	Conditions	Ratings	Unit
Maximum supply voltage	$V_{CC\ max}$		6.0	V
Maximum output current	$I_O\ peak$		570	mA
Allowable power dissipation	$P_d\ max$		700	mW
Operating temperature	T_{opr}		-10 to +60	$^\circ C$
Storage temperature	T_{stg}		-55 to +150	$^\circ C$

Operating Conditions at $T_a = 25^\circ C$

Parameter	Symbol	Conditions	Ratings		Unit
Recommended supply voltage	V_{CC}		3.0	4.5	V
Recommended load resistance	R_L		4 to 32	8 to 32	Ω

Operating Characteristics at $T_a = 25^\circ C$, $V_{CC}=3.0V$, $R_L=4\Omega$, $f=1kHz$, See Sample Application Circuit 1.

Parameter	Symbol	Conditions	Ratings			Unit
			min	typ	max	
Quiescent current	I_{CCO1}	No signal		7	12	mA
	I_{CCO2}	No signal, $V_{CC}=4.5V$		8.5	15	mA
Voltage gain	VG	$R_1=100\Omega$	42	45	48	dB
Output power	P_O	THD=10%	200	240		mW
Total harmonic distortion	THD	$P_O=100mW$		0.4	1.5	%
Output noise voltage	V_{NO}	$R_g=1k\Omega$, BW=20Hz to 20kHz		0.2	0.5	mV
Output ripple voltage	V_{rp}	$R_g=0$, $f_R=100Hz$, $V_R=50mV$		0.7		mV

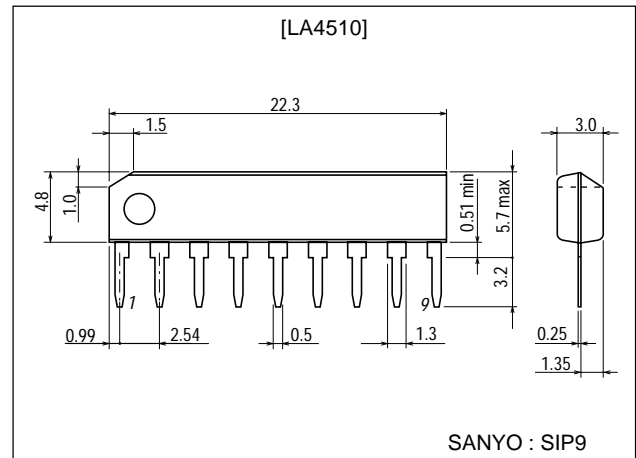
■ Any and all SANYO products described or contained herein do not have specifications that can handle applications that require extremely high levels of reliability, such as life-support systems, aircraft's control systems, or other applications whose failure can be reasonably expected to result in serious physical and/or material damage. Consult with your SANYO representative nearest you before using any SANYO products described or contained herein in such applications.

■ SANYO assumes no responsibility for equipment failures that result from using products at values that exceed, even momentarily, rated values (such as maximum ratings, operating condition ranges, or other parameters) listed in products specifications of any and all SANYO products described or contained herein.

Package Dimensions

unit:mm

3017C-SIP9



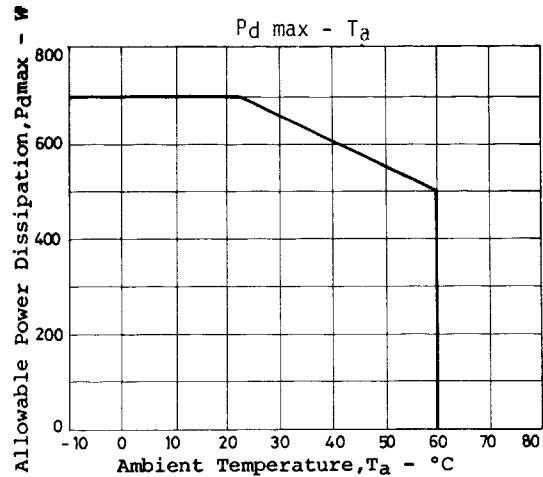
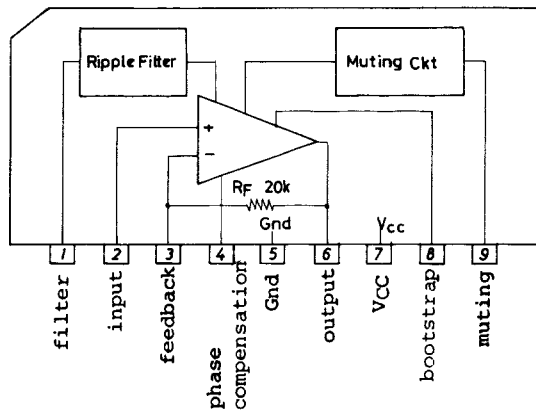
SANYO Electric Co.,Ltd. Semiconductor Company

TOKYO OFFICE Tokyo Bldg., 1-10, 1 Chome, Ueno, Taito-ku, TOKYO, 110-8534 JAPAN

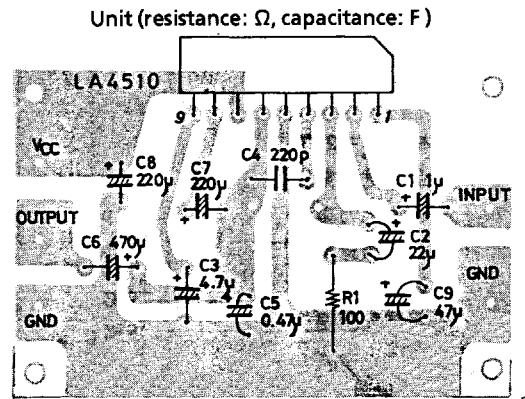
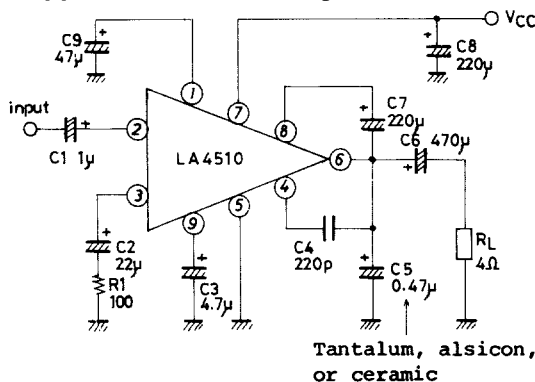
21500TN (KT)/41594HK/O147KI/2126KI/4225MW/D132KI, TS No.1161-1/8

LA4510

Equivalent Circuit Block Diagram



Sample Application Circuit 1 : Speaker load



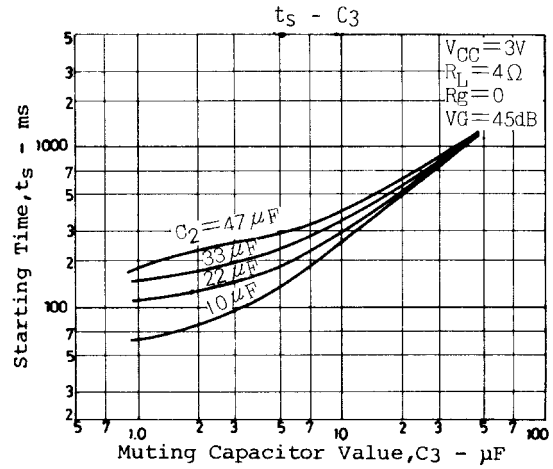
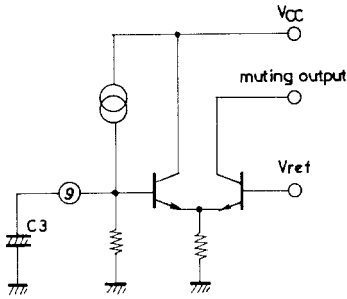
Sample printed circuit pattern (Cu-foiled area)

Description of external parts

- C1 (1µF) · Input capacitor (Coupling capacitor for input signal)
Decreasing the capacitance value lowers the frequency response at low frequencies.
- C2 (22µF) · Feedback capacitor (Bypass of feedback signal)
Decreasing the capacitance value lowers the frequency response at low frequencies ; increasing the capacitance value makes the starting time later.
- C3 (4.7µF) · Muting capacitor
Decreasing the capacitance value makes the starting time earlier ; removing C3 causes pop noise.
Increasing the capacitance value makes the starting time later.
- C4 (220pF) · Phase compensation capacitor (Phase compensation by local feedback) Decreasing the capacitance value causes the frequency response to extend at high frequencies, and thereby oscillation is liable to occur. Increasing the capacitance value worsens distortion factor at high frequencies.
- C5 (0.47µF) · Oscillation blocking capacitor
Decreasing the capacitance value causes oscillation to liable to occur. Using an ordinary electrolytic capacitor may cause oscillation to occur at a low temperature. Use a tantalum or alsicon electrolytic capacitor that is good in temperature characteristic.
- C6 (470µF) · Output capacitor (Cutoff of DC to speaker)
Decreasing the capacitance value causes insufficient power at low frequencies.
- C7 (220µF) · Bootstrap capacitor (Feedback from output stage)
Decreasing the capacitance value causes insufficient power at low frequencies, especially when voltage is reduced.
- C8 (220µF) · Power capacitor (Drop in power impedance)
Decreasing the capacitance value causes motor noise, etc. to be entered easily. Removing C8 may cause oscillation to occur.
- C9 (47µF) · Capacitor for ripple filter (Filter for bias voltage)
Decreasing the capacitance value causes the circuit to be subjected to the influence of power supply, and thereby ripple is liable to occur.
- r_i (100Ω) · Feedback resistor (Setting of voltage gain)
Decreasing the resistance value increases voltage gain, but worsens distortion factor, and thereby gain varies. Increasing the resistance value causes oscillation to liable to occur.

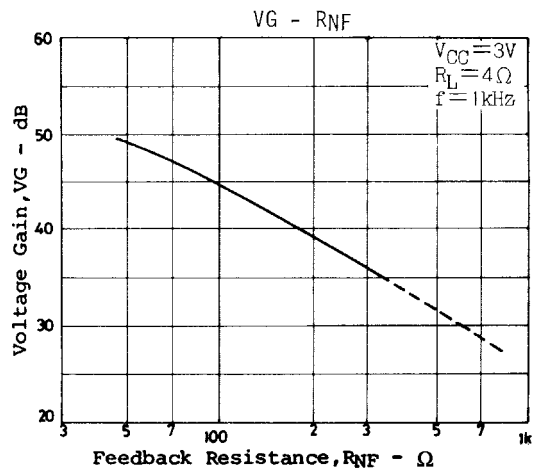
Setting of Starting Time

The LA4510 contains a muting circuit to be operated at the time of power switch ON/OFF. Thus, pop noise coming from power amplifier and preamplifier is rejected. The starting time depends on the capacitance value of feedback capacitor C2 as well as muting capacitor (C3).



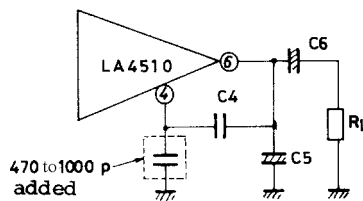
Voltage Gain

Voltage gain depends on the ratio of internal resistance value (20kΩ) to external resistance value (R1). However, since setting of open loop voltage gain is a little on the low side (62dB) due to soft clipping, it is not recommendable to use the IC at a voltage gain greater than recommended. If the IC is used at a voltage gain less than recommended, take care not to cause oscillation to occur.



Action to Prevent Oscillation

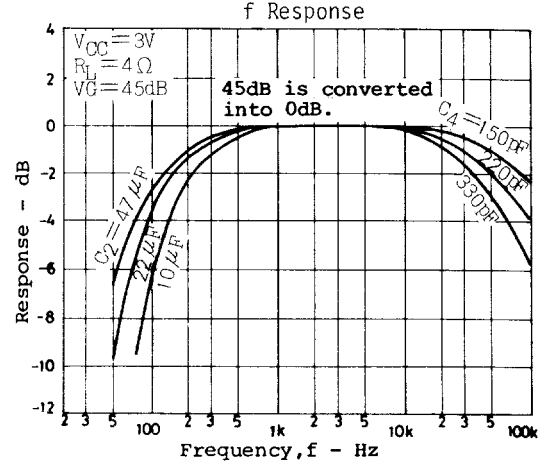
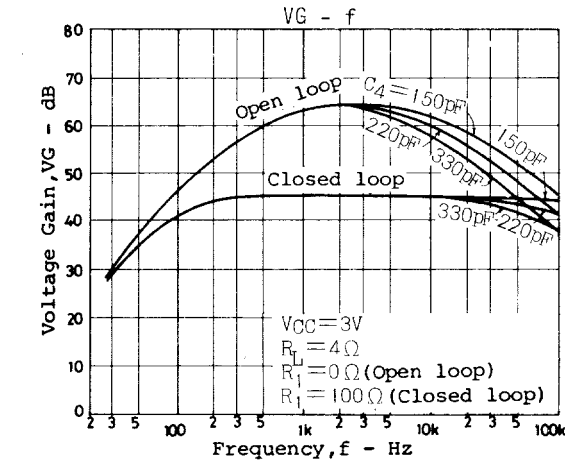
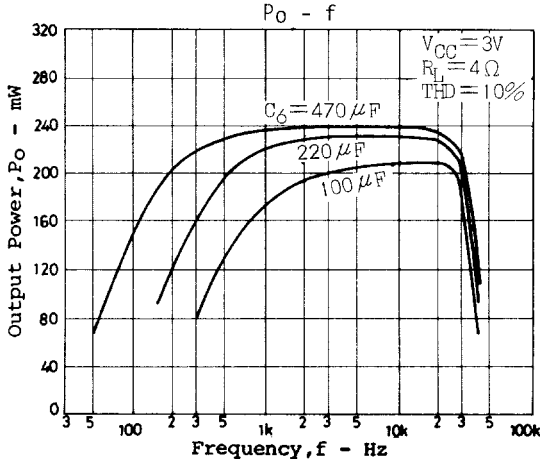
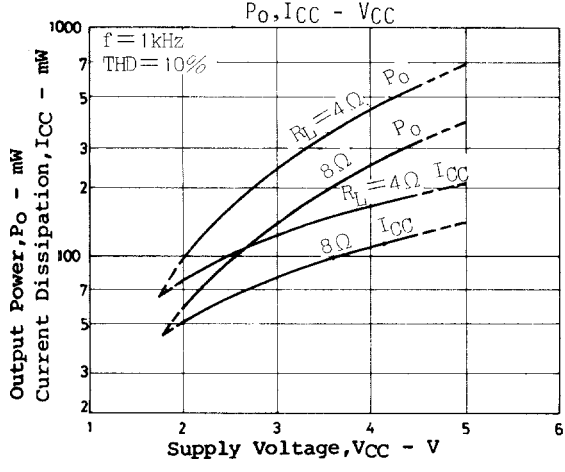
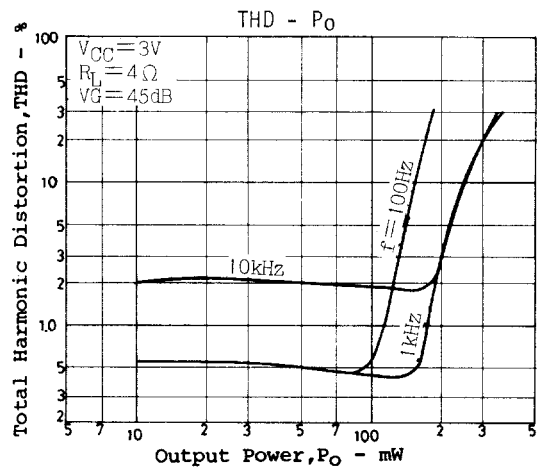
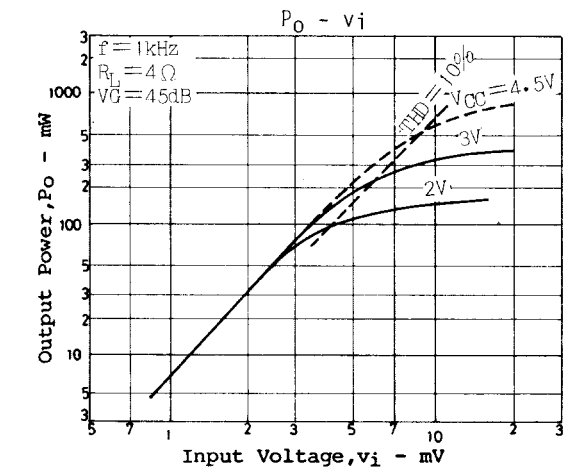
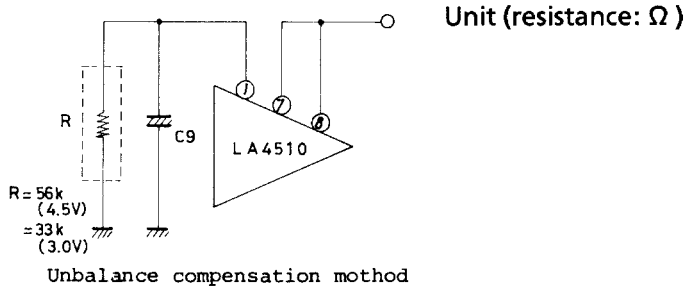
If oscillation occurs, check C5. The larger the capacitance value is or the smaller the value of tan δ is if the capacitance value is the same, C5 acts more effectively against oscillation. Using an electrolytic capacitor as C5 may cause oscillation to occur at a low temperature.



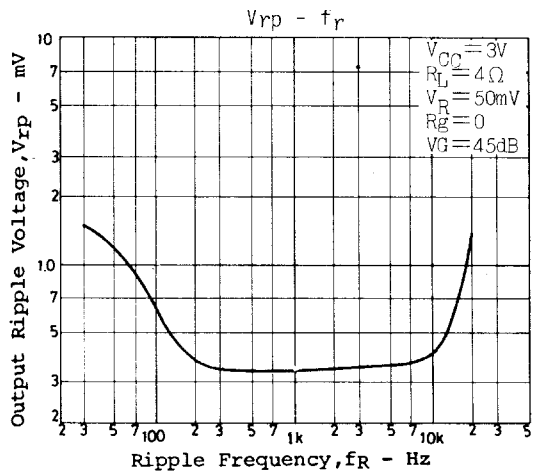
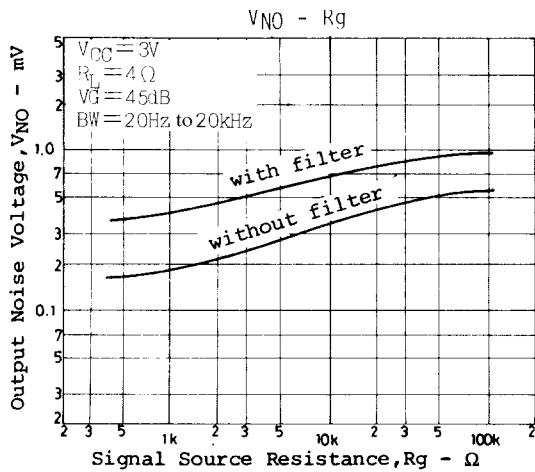
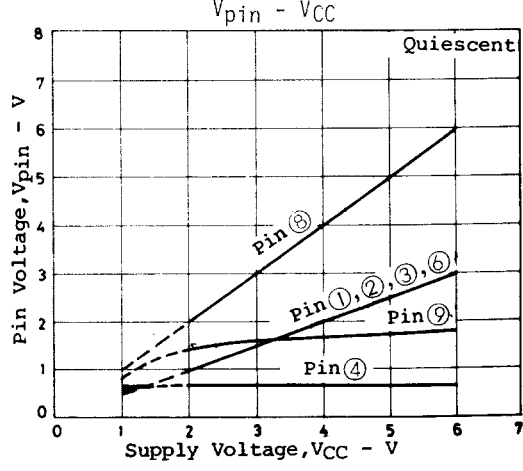
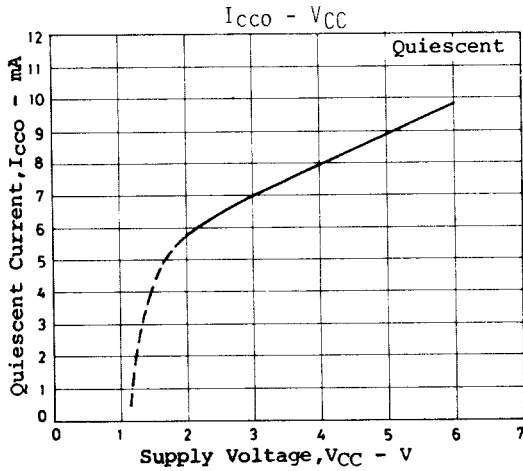
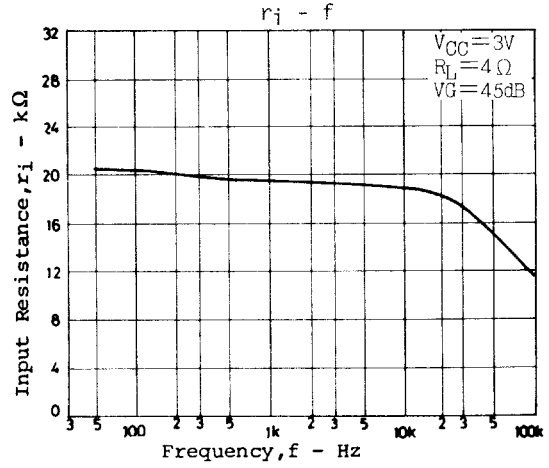
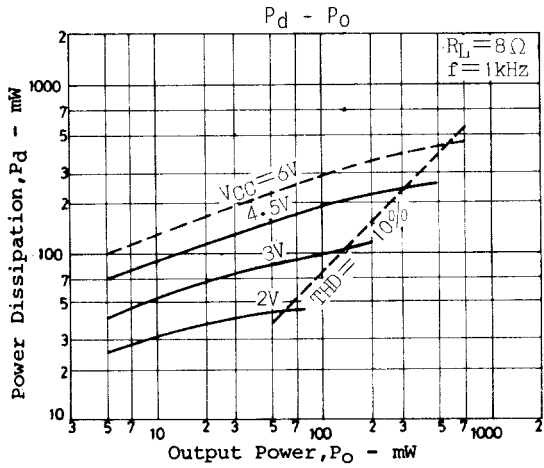
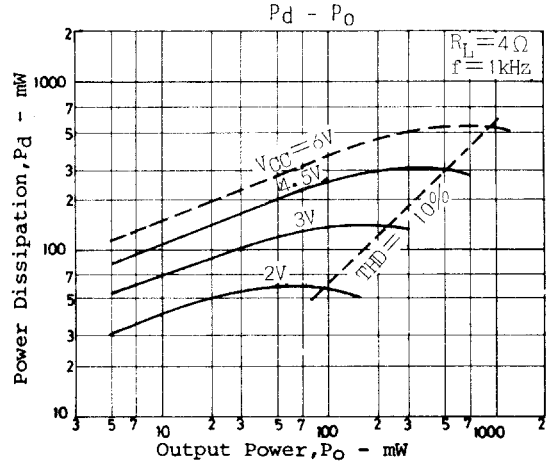
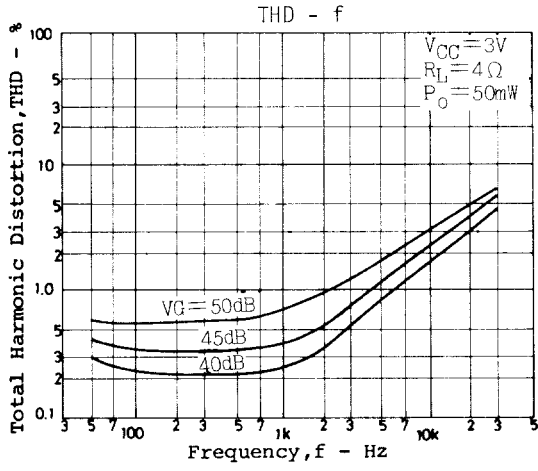
It is recommendable to use a tantalum or alsicon electrolytic capacitor that is good in temperature characteristic. For oscillation that occurs at a decreased voltage gain, increase the capacitance value of C4. If it is impossible for C4, C5 to act effectively against oscillation, add a ceramic capacitor of 470 to 1000pF across pin (4) and GND. In this case, distortion factor at high frequencies worsens to some extent.

Removal of Bootstrap Capacitor

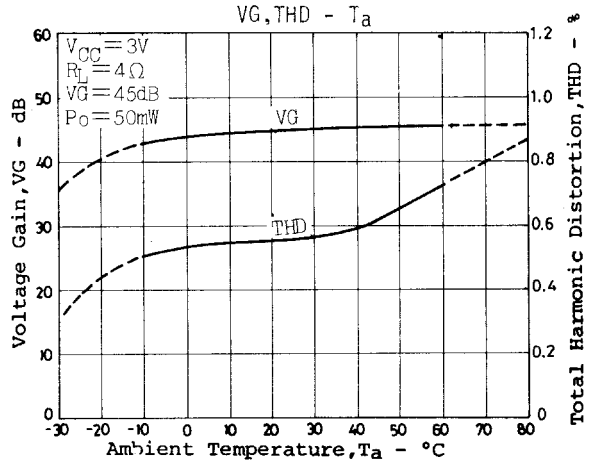
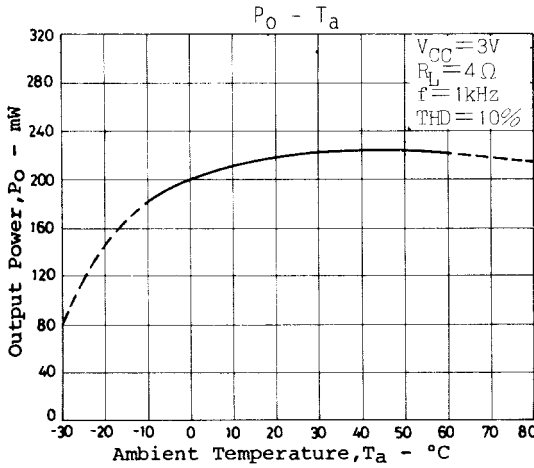
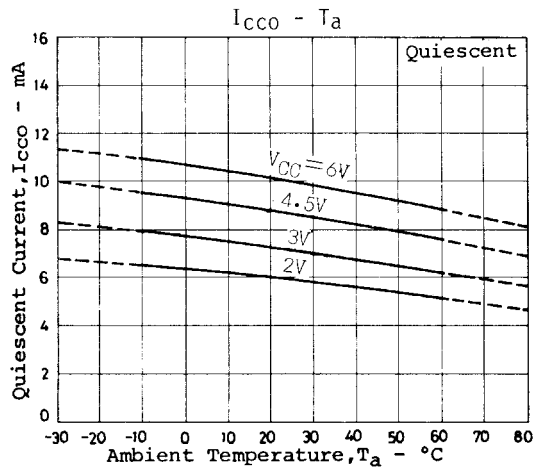
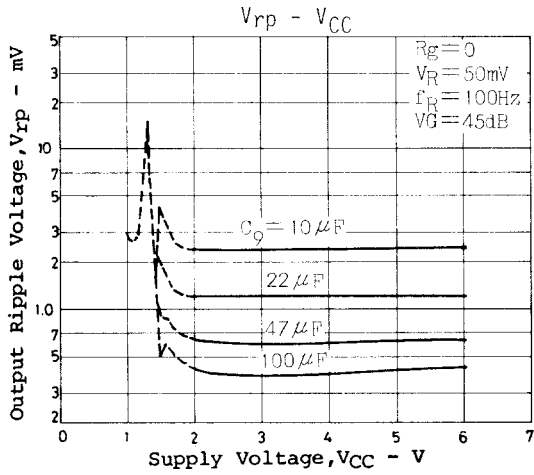
In applications where more power than required is available (approximately 60% of rating), it is possible to remove bootstrap capacitor C7 (pin (7)-to-pin (8) short). However, since this causes clipping unbalance to occur, this unbalance must be compensated by use of a resistor and a diode. A simple compensation method is shown below. This method makes it possible to attain clipping balance at a certain supply voltage only.



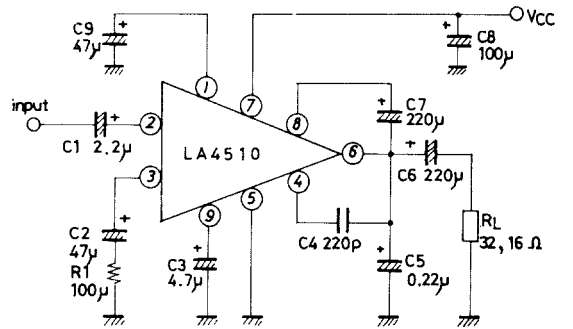
LA4510



LA4510

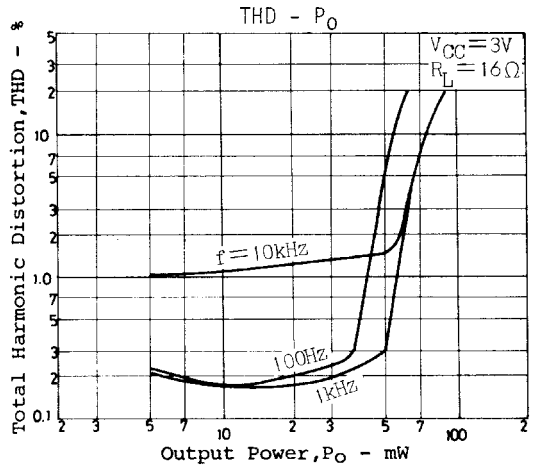
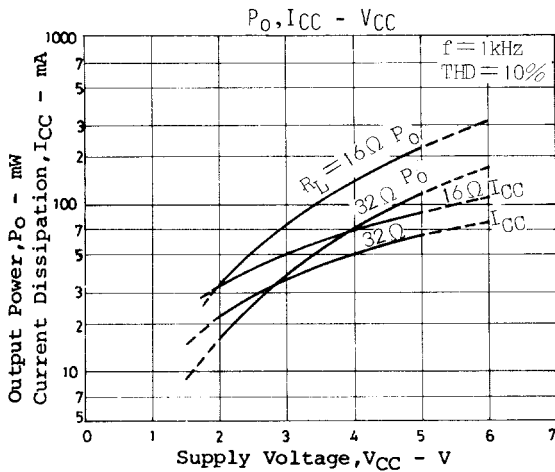


Sample Application Circuit 2 : Headphone load



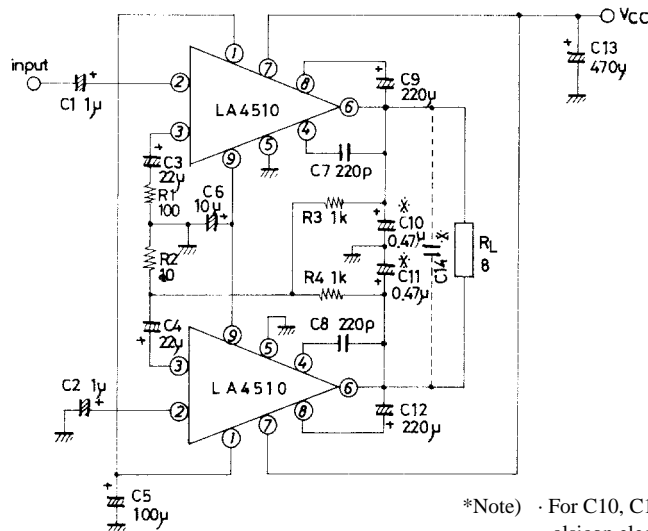
Unit (resistance: Ω , capacitance: F)

Tantalum or alsicon, ceramic



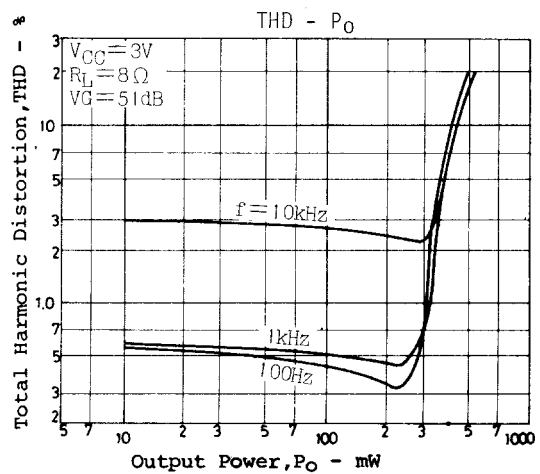
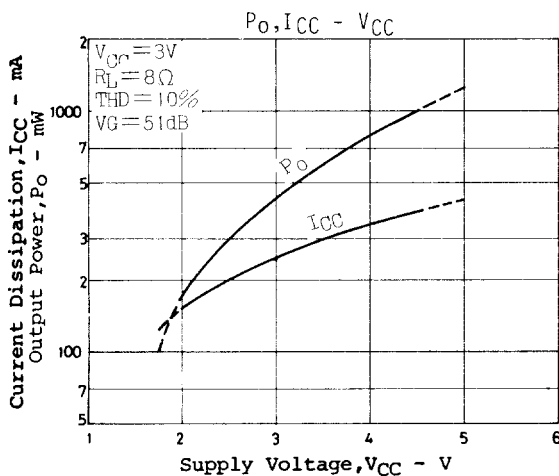
LA4510

Sample Application Circuit 3 : Bridge



*Note) · For C10, C11, use tantalum or alicon electrolytic capacitor.
· If oscillation occurs, add C14 (0.1 to 0.2µ ceramic capacitor).

Unit (resistance: Ω, capacitance: F)



Proper Cares in Using IC

- Maximum ratings

If the IC is used in the vicinity of the maximum ratings, even a slight variation in conditions may cause the maximum ratings to be exceeded, thereby leading to breakdown. Allow an ample margin of variation for supply voltage, etc. and use the IC in the range where the maximum ratings are not exceeded.

- Pin-to-pin short

If power is applied when the space between pins is shorted, breakdown or deterioration may occur. When mounting the IC on the board or applying power, make sure that the space between pins is not shorted with solder, etc.

- Printed circuit pattern

When designing the printed circuit pattern, make the power supply, output, and ground lines thick and short and arrange the pattern and parts so that no feedback loop is formed between input and output. Place power capacitor C8, oscillation blocking capacitors C4, C5 as close to IC pins as possible to prevent oscillation from occurring. Refer to the sample printed circuit pattern.

- Specifications of any and all SANYO products described or contained herein stipulate the performance, characteristics, and functions of the described products in the independent state, and are not guarantees of the performance, characteristics, and functions of the described products as mounted in the customer's products or equipment. To verify symptoms and states that cannot be evaluated in an independent device, the customer should always evaluate and test devices mounted in the customer's products or equipment.
- SANYO Electric Co., Ltd. strives to supply high-quality high-reliability products. However, any and all semiconductor products fail with some probability. It is possible that these probabilistic failures could give rise to accidents or events that could endanger human lives, that could give rise to smoke or fire, or that could cause damage to other property. When designing equipment, adopt safety measures so that these kinds of accidents or events cannot occur. Such measures include but are not limited to protective circuits and error prevention circuits for safe design, redundant design, and structural design.
- In the event that any or all SANYO products(including technical data, services) described or contained herein are controlled under any of applicable local export control laws and regulations, such products must not be exported without obtaining the export license from the authorities concerned in accordance with the above law.
- No part of this publication may be reproduced or transmitted in any form or by any means, electronic or mechanical, including photocopying and recording, or any information storage or retrieval system, or otherwise, without the prior written permission of SANYO Electric Co., Ltd.
- Any and all information described or contained herein are subject to change without notice due to product/technology improvement, etc. When designing equipment, refer to the "Delivery Specification" for the SANYO product that you intend to use.
- Information (including circuit diagrams and circuit parameters) herein is for example only ; it is not guaranteed for volume production. SANYO believes information herein is accurate and reliable, but no guarantees are made or implied regarding its use or any infringements of intellectual property rights or other rights of third parties.

This catalog provides information as of February, 2000. Specifications and information herein are subject to change without notice.