

TOSHIBA BIPOLAR DIGITAL INTEGRATED CIRCUIT SILICON MONOLITHIC

TD62824P

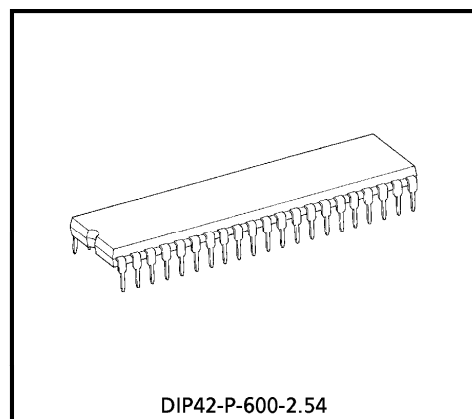
8 × 3 PARALLEL SHIFT REGISTER / DRIVER

The TD62824P is a general purpose 24bit driver IC consisting of 8 block 3bit shift register and 24bit driver (open collector).

The TD62824P is best suited as a 24 dot printer head driver.

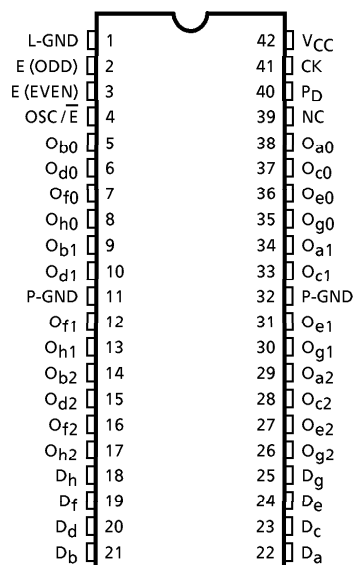
FEATURES

- Power-down function for reducing power consumption during standby or when printing is not made. (I_{CC} off < 10μA)
- Independent 2 output enable terminals (even / add outputs)
- Effective as measures for regenerative effect during high-speed and high-density printing.
- 8bit parallel input and 3bit parallel shift configuration : High-speed operation and direct interface with CPU.
- Large output drive capacity
 Output with standing voltage ... 30V
 Output current 80mA DC
 15mA 10%
- Built-in CR-Timer for load burning prevention.
- Less output saturation voltage difference in package : Within ±50mV (standard) at I_{OUT} = 120mA



Weight : 6.37g (Typ.)

PIN CONNECTION (TOP VIEW)



961001EBA2

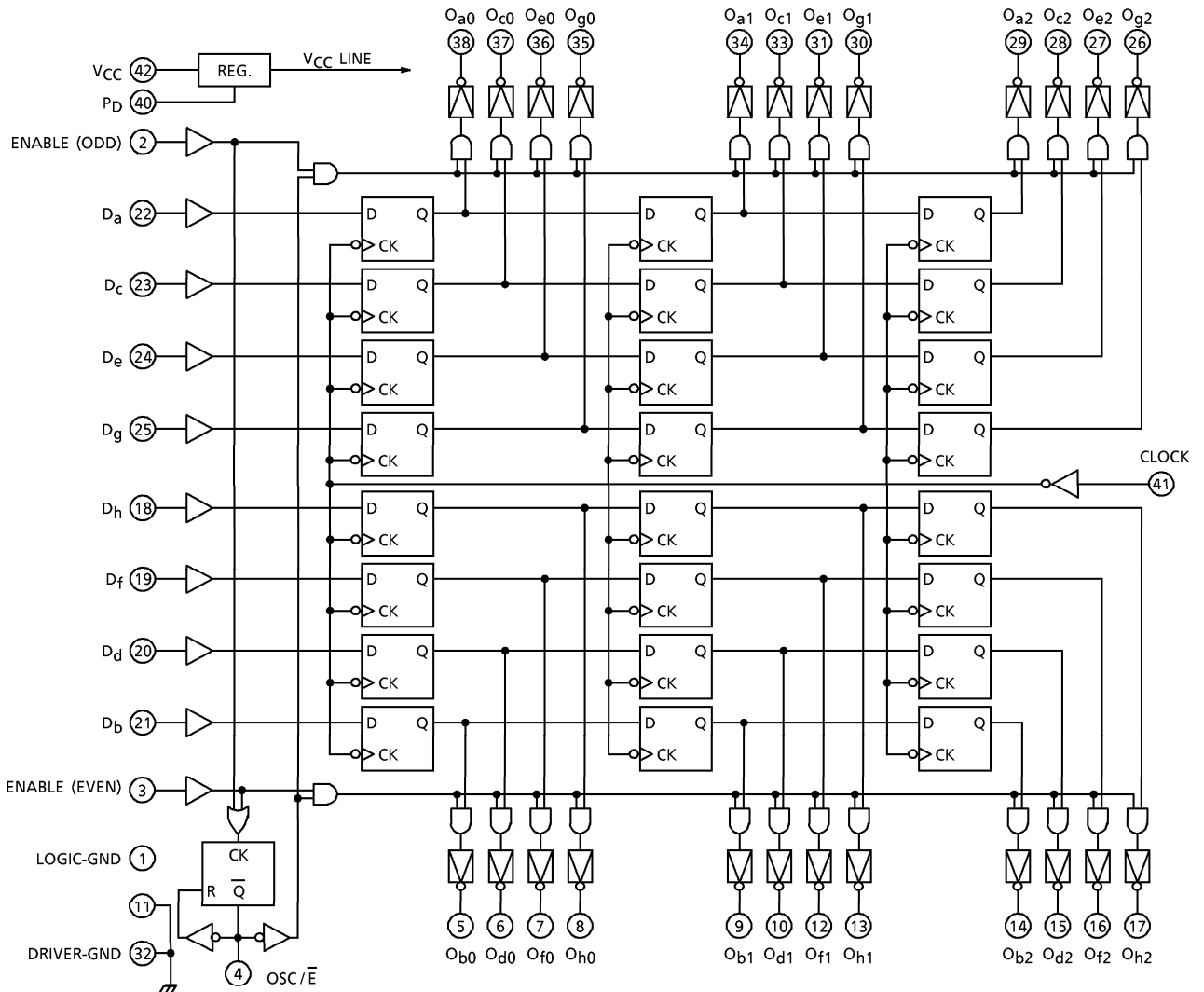
● TOSHIBA is continually working to improve the quality and the reliability of its products. Nevertheless, semiconductor devices in general can malfunction or fail due to their inherent electrical sensitivity and vulnerability to physical stress. It is the responsibility of the buyer, when utilizing TOSHIBA products, to observe standards of safety, and to avoid situations in which a malfunction or failure of a TOSHIBA product could cause loss of human life, bodily injury or damage to property. In developing your designs, please ensure that TOSHIBA products are used within specified operating ranges as set forth in the most recent products specifications. Also, please keep in mind the precautions and conditions set forth in the TOSHIBA Semiconductor Reliability Handbook.

● The products described in this document are subject to foreign exchange and foreign trade control laws.

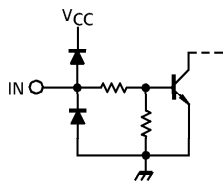
● The information contained herein is presented only as a guide for the applications of our products. No responsibility is assumed by TOSHIBA CORPORATION for any infringements of intellectual property or other rights of the third parties which may result from its use. No license is granted by implication or otherwise under any intellectual property or other rights of TOSHIBA CORPORATION or others.

● The information contained herein is subject to change without notice.

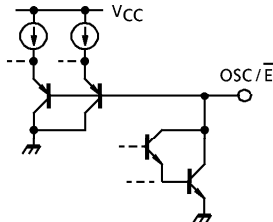
BLOCK DIAGRAM



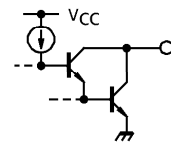
INPUT EQUIVALENT CIRCUIT



OSC / E TERMINAL EQUIVALENT CIRCUIT



OUTPUT EQUIVALENT CIRCUIT



TRUTH TABLE A

P _D	OSC / E	E (ODD)	E (EVEN)	O (ODD)	O (EVEN)	COMMENT
L	(*)	(*)	(*)	OFF	OFF	I _{CC} < 10μA
H	(*)	L	L	OFF	OFF	—
H	L	H	L	D	OFF	—
H	L	L	H	OFF	D	—
H	L	H	H	D	D	—
H	CR	↑	L	D	OFF	OUTPUT ON time is according to CR constant.
H	CR	L	↑	OFF	D	
H	CR	↑	↑	D	D	
H	CR	H	(*)	OFF	OFF	—
H	CR	(*)	H	OFF	OFF	—

(Note) If "H" level power is applied by force, OSC/E terminal may be destructed and therefore, it should be used with CR added or grounded.

(*) "H" or "L"

TRUTH TABLE B

P _D	CLOCK	D _X	Q _{X0}	Q _{X1}	Q _{X2}	COMMENT
L	(*)	(*)	OFF	OFF	OFF	—
H	↑	L	OFF	Q _{X0}	Q _{X1}	DATA SHIFT
H	↑	H	ON	Q _{X0}	Q _{X1}	
H	↓	(*)	Q _{X0}	Q _{X1}	Q _{X2}	NO CHANGE
H	L	↑↓	Q _{X0}	Q _{X1}	Q _{X2}	
H	H	↑↓	Q _{X0}	Q _{X1}	Q _{X2}	

(*) "H" or "L"

MAXIMUM RATING (Ta = 25°C)

CHARACTERISTIC	SYMBOL	RATING	UNIT
Supply Voltage	V _{CC}	7.0	V
Output Voltage	V _{OUT}	30	V
Output Current	I _{OUT1} (Note)	80	mA / ch
	I _{OUT2} (Note)	150	
Input Voltage	V _{IN}	V _{CC}	V
External Resistor	R _{EXT}	1000	kΩ
External Capacitor	C _{EXT}	50	μF
Max. Operating Frequency	f _{MAX}	750	kHz
Power Dissipation	P _D	1.6	W
Operating Temperature	T _{opr}	0~75	°C
Storage Temperature	T _{stg}	-55~150	°C

(Note) I_{OUT 1} : DC, I_{OUT 2} : Duty-10%

RECOMMENDED OPERATING CONDITION (Ta = 0~70°C)

CHARACTERISTIC	SYMBOL	CONDITION	MIN.	TYP.	MAX.	UNIT
Supply Voltage	V _{CC}	—	4.5	5.0	5.5	V
Output Voltage	V _{OUT}	—	0	—	28	V
Output Current	I _{OUT1}	Duty 20%	0	—	80	mA
	I _{OUT2}		0	—	130	
Input Voltage	V _{IN}	—	0	—	V _{CC}	V
External Resistor	R _{EXT}	—	0.1	—	500	kΩ
External Capacitor	C _{EXT}	—	—	—	50	μF
Max. Operating Frequency	f _{MAX}	—	—	—	400	kHz
Clock Pulse Width	t _w (CK)	—	300	—	—	μs
	t _w (CK)	—	2.2	—	—	
Data Setup Time	t _{setup}	—	0.0	—	—	μs
Data Hold Time	t _{hold}	—	1.0	—	—	μs
Power Dissipation	P _D	T _j = 130°C, on PCB	—	—	1.5	W

ELECTRICAL CHARACTERISTICS (Ta = 25°C)

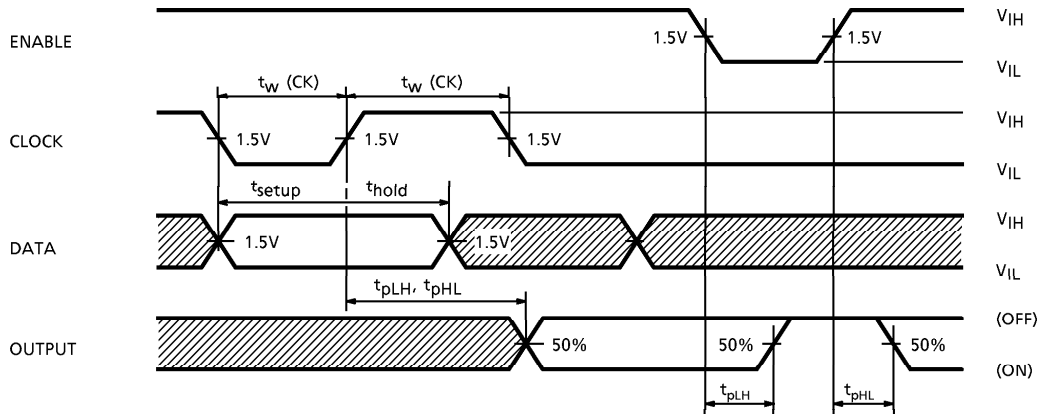
CHARACTERISTIC		SYMBOL	TEST CIR-CUIT	TEST CONDITION	MIN.	TYP.	MAX.	UNIT			
Input Voltage	"H" Level	V _{IH}	—	—	2.0	—	V _{CC}	V			
	"L" Level	V _{IL}	—	—	0	—	0.6				
Input Current	"H" Level	I _{IH}	—	V _{CC} = 5.5V, V _{IN} = 2.4V	—	0.12	0.2	mA			
				V _{CC} = 5.5V, V _{IN} = 5.5V	—	0.32	0.5				
	"L" Level	I _{IL}		V _{CC} = 5.5V, V _{IN} = 0.3V	—	—	30	μA			
Output Leak Current		I _{OH}	—	V _{CC} = 4.5V, V _{OUT} = 28V	—	—	30	μA			
Output Saturation		V _{OL}	—	V _{CC} = 4.5V, I _{OUT} = 60mA	—	0.9	1.15	V			
				V _{CC} = 4.5V, I _{OUT} = 120mA	—	1.1	1.5				
Supply Current		I _{CC}	—	V _{CC} = 5.5V	—	—	10	μA			
		I _{CC} (ON)					P _D = GND		—	12	20
		I _{CC} (OFF)					ALL OUTPUT "ON"				
I _{CC} (OFF)	P _D = GND		—	9.5	16						
	ALL OUTPUT "OFF"										
Input Voltage	"H" Level	V _{TH +}	—	—	2.5	2.8	3.1	V			
	"L" Level	V _{TH -}	—	—	1.2	1.4	1.6				
Hysteresis Voltage		V _H	—	—	—	1.4	—	V			

SWITCHING CHARACTERISTICS (Ta = 25°C, V_{CC} = 5.0V)

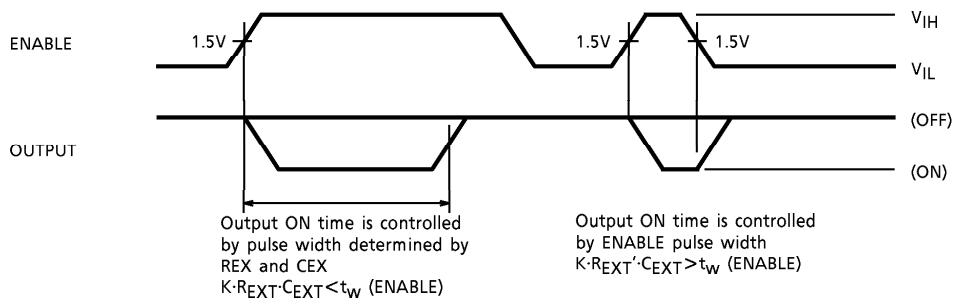
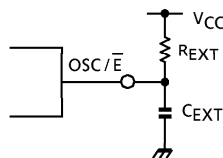
CHARACTERISTIC		SYMBOL	TEST CIR-CUIT	TEST CONDITION	MIN.	TYP.	MAX.	UNIT
Max. Operating Frequency		f _{MAX}	—	R _L = 68Ω, C _L = 15pF V _{IH} = 3.0V, V _{IL} = 0V	500	850	—	kHz
Propagation "H" Level	CK-OUT	t _{pLH}			—	0.7	1.3	μs
	E-OUT				—	5.5	10	
	OSC-OUT				—	7.5	13	
	P _D -OUT				—	9	30	
Delay Time "L" Level	CK-OUT	t _{pHL}			—	0.8	1.3	μs
	E-OUT				—	0.6	1.3	
	OSC-OUT				—	0.8	1.3	
Min. Pulse Width	CLOCK	t _w MIN			—	0.06	0.1	μs
	CLOCK				—	1.1	1.85	
	ENABLE				—	0.1	0.2	
	ENABLE				—	1.0	2.0	
Set Up Time	CK-DATA	t _{setup}			—	-0.2	0	μs
	P _D				—	-0.22	0.8	
Data Hold Time		t _{hold}	—	0.15	0.5	μs		
Max. Clock Rise Time		t _r	—	—	5	μs		
Max. Clock Fall Time		t _f	—	—	5	ms		
Enable Output Pulse Width		t _w ON	—	R _{EXT} = 10kΩ, C _{EXT} = 10μF	—	3	—	ms

SWITCHING CHARACTERISTICS TEST CONDITION

A. Timing waveform (OSC / \bar{E} = GND)



B. Usage of OSC / \bar{E} terminal

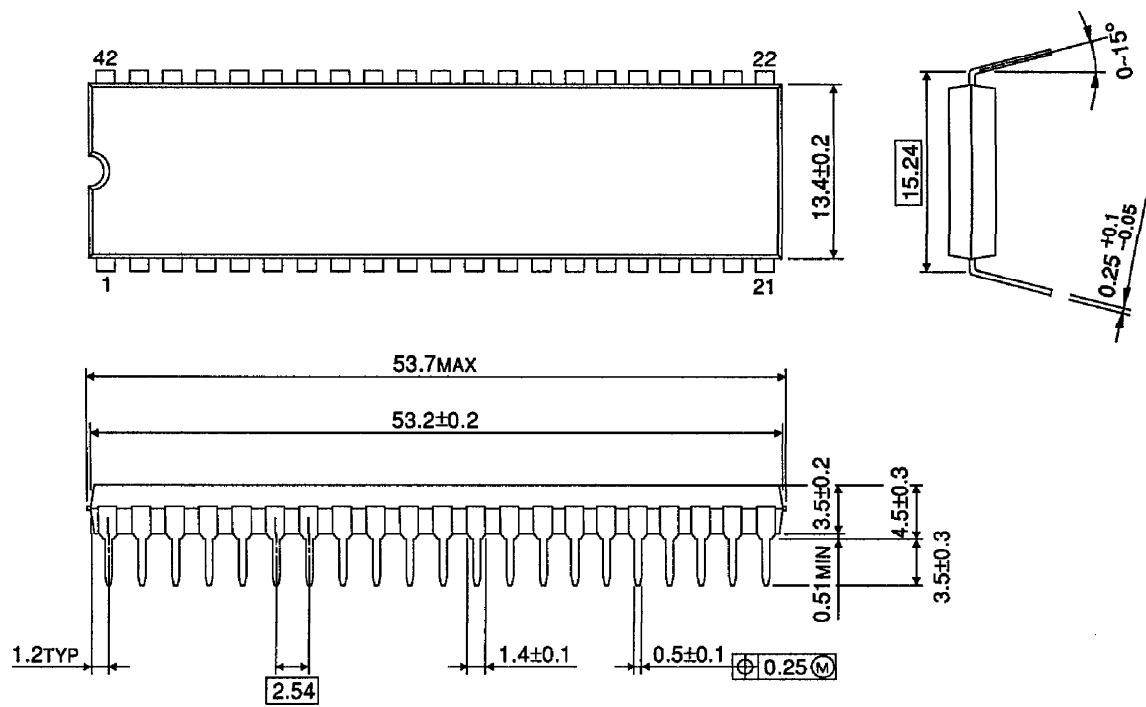


PRECAUTIONS for USING

Utmost care is necessary in the design of the output line, V_{CC} and GND line since IC may be destroyed due to short-circuit between outputs, air contamination fault, or fault by improper grounding.

OUTLINE DRAWING
DIP42-P-600-2.54

Unit : mm



Weight : 6.37g (Typ.)