

**LB1669****2-Phase Unipolar Brushless Motor Driver****Overview**

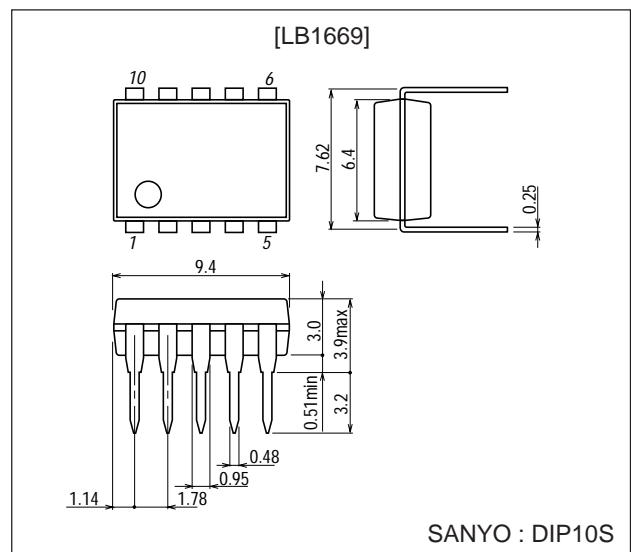
The LB1669 is a 2-phase unipolar brushless motor driver, which allows motor lock protection and automatic recovery circuits to be implemented with few external components.

**Features and Functions**

- Hall element direct connection possible
- Output transistor with 1.5 A output current built in
- Rotation detect function (Drive mode: "L", Stop mode: "H") built in
- Motor lock protection and automatic recovery functions built in
- Thermal shutdown circuit built in
- DIP-10S package means small mounting area.
- Pin compatible with LB1663, so can replace 12 V types.

**Package Dimensions**

unit : mm

**3098B-DIP10S**

■ Any and all SANYO products described or contained herein do not have specifications that can handle applications that require extremely high levels of reliability, such as life-support systems, aircraft's control systems, or other applications whose failure can be reasonably expected to result in serious physical and/or material damage. Consult with your SANYO representative nearest you before using any SANYO products described or contained herein in such applications.

■ SANYO assumes no responsibility for equipment failures that result from using products at values that exceed, even momentarily, rated values (such as maximum ratings, operating condition ranges, or other parameters) listed in products specifications of any and all SANYO products described or contained herein.

**SANYO Electric Co.,Ltd. Semiconductor Company**

TOKYO OFFICE Tokyo Bldg., 1-10, 1 Chome, Ueno, Taito-ku, TOKYO, 110-8534 JAPAN

## Specifications

### Absolute Maximum Ratings at Ta = 25°C

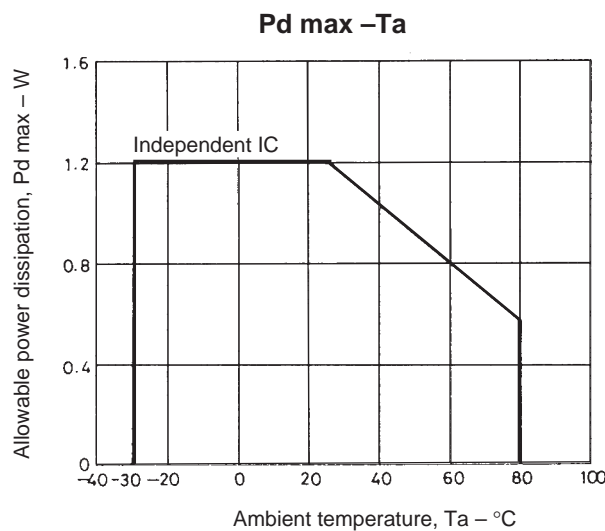
Parameter	Symbol	Conditions	Ratings	Unit
Maximum input current	I <sub>CC</sub> max	t ≤ 20 ms	200	mA
Output applied voltage	V <sub>OUT</sub>		-0.3 to +60	V
Output current	I <sub>OUT</sub>		1.5	A
RD flow-in current	I <sub>RD</sub>		10	mA
RD applied voltage	V <sub>RD</sub>		30	V
Allowable power dissipation	Pd max	Independent IC	1.2	W
Operating temperature	Topr		-30 to +80	°C
Storage temperature	Tstg		-55 to +125	°C

### Allowable Operating Conditions at Ta = 25°C

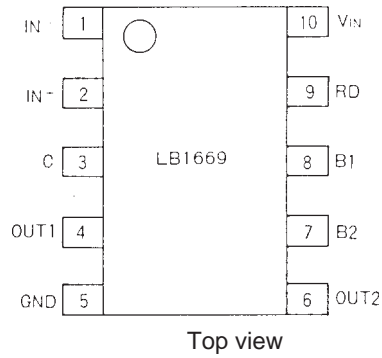
Parameter	Symbol	Conditions	Ratings	Unit
Input current range	I <sub>CC</sub>		6.0 to 5.0	mA
Common-mode input voltage ange	V <sub>ICM</sub>		0 to V <sub>IN</sub> -1.5	V

### Electrical Characteristics at Ta = 25°C, I<sub>CC</sub> = 10 mA

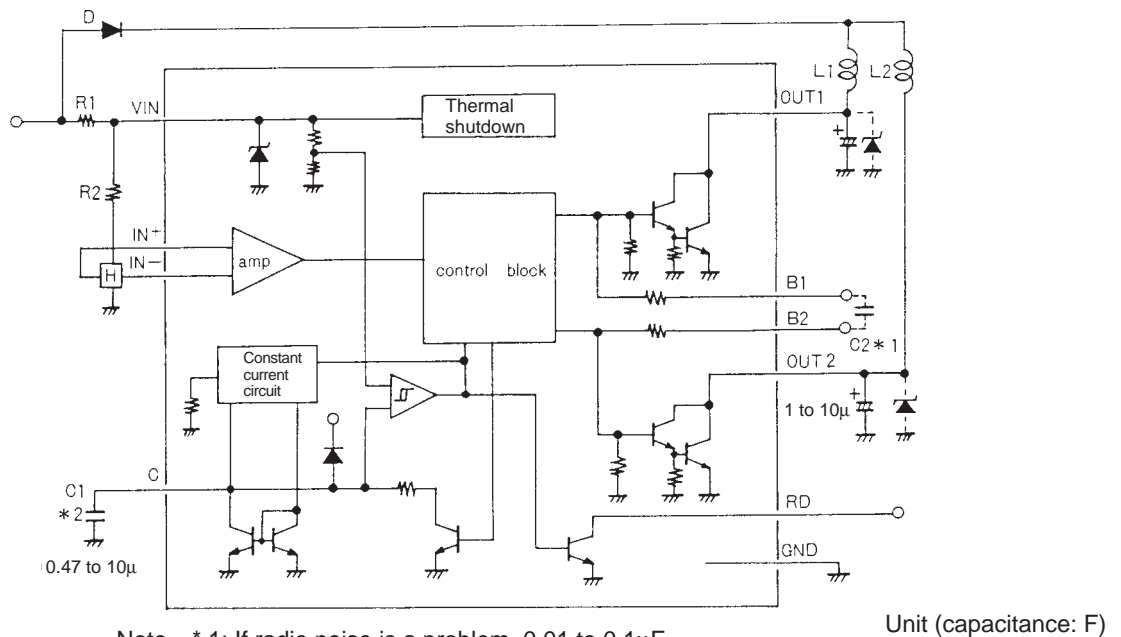
Parameter	Symbol	Conditions	Ratings			Unit
			min	typ	max	
Output withstand voltage 1	V <sub>OR</sub>		60			V
Output withstand voltage 2	V <sub>O(sus)</sub>	I <sub>O</sub> = 0.1 A	40			V
Output saturation voltage	V <sub>O sat1</sub>	I <sub>O</sub> = 0.5 A		0.95	1.2	V
	V <sub>O sat2</sub>	I <sub>O</sub> = 1.0 A		1.15	1.5	V
V <sub>IN</sub> voltage	V <sub>IN</sub>	I <sub>CC</sub> = 7.0 mA	6.4	6.7	7.0	V
Amp input offset voltage	V <sub>OFF</sub>		-7	0	+7	mV
Amp input bias current	I <sub>BA</sub>		-250			nA
RD output saturation voltage	V <sub>RD (sat)</sub>	I <sub>RD</sub> = 5 mA		0.1	0.2	V
C flow-out current	I <sub>C1</sub>		2.1	3	3.9	μA
C discharge current	I <sub>C2</sub>		0.31	0.44	0.59	μA
Comparator input threshold voltage	V <sub>TH1</sub>		0.77	0.8V <sub>IN</sub>	0.83	V
	V <sub>TH2</sub>		0.42	0.45V <sub>IN</sub>	0.48	V



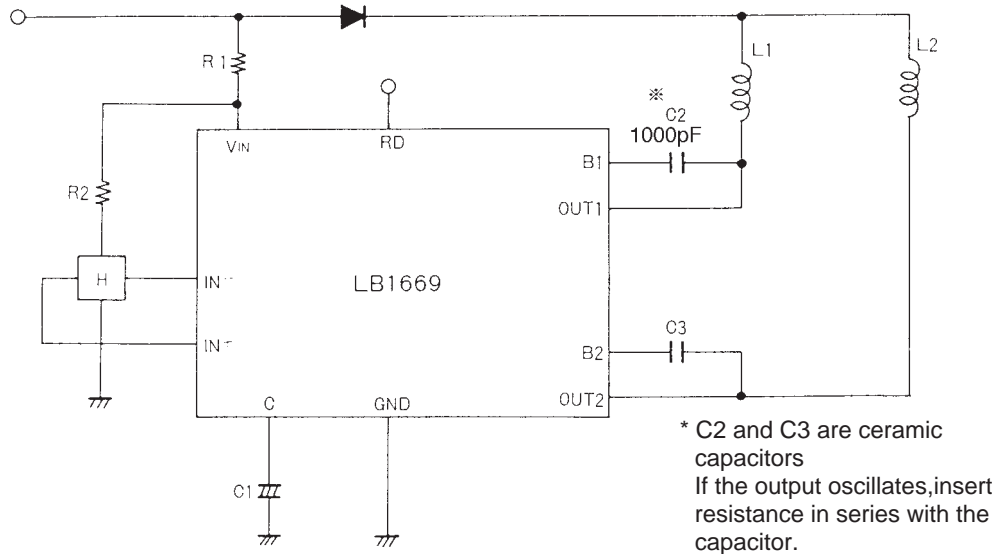
Pin Assignment



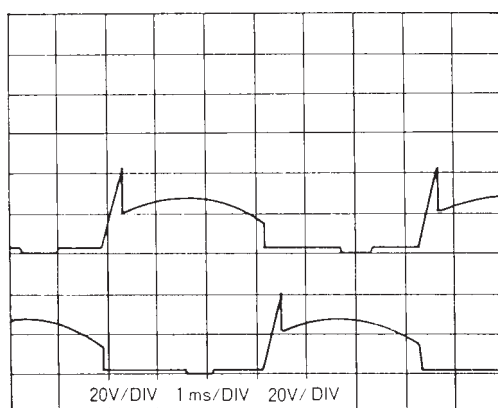
Equivalent Circuit Block Diagram and Sample Application Circuit 1



Sample Application Circuit 2



Sample Application Circuit 2 Output Waveform Diagram



Truth Table

IN+	IN-	C	OUT1	OUT2
H	L	L	H	L
L	H	L	L	H
H	L	H	H	H
L	H	H	H	H

Design Notes (See Sample Application Circuits.)

(1) Supply Voltage ( $V_{IN}$  pin)

Due to the built-in parallel regulator which supplies power to the Hall amplifier circuit and the control block. Therefore, the LB1669 is not affected by power source fluctuations and kickbacks from the motor and maintains the stable operation even if noise signals such as surge are generated. Set the resistance R1 between  $V_{CC}$  and  $V_{IN}$  so that the  $I_{CC}$  current of 6 mA to 50 mA can flow into the  $V_{IN}$  pin within the supply voltage range of a fan motor.

$V_{IN}$  is 6.7 V typ at  $I_{CC} = 7$  mA.

The current flowing into  $V_{IN}$  is calculated using the equation shown below.

$$I_{CC} = \frac{V_{CC} - V_{IN}}{R1} \dots\dots (1)$$

- Consideration given to surge voltage

The maximum allowable current at  $V_{IN}$  pin is 200 mA, so the withstand voltage level is designed as follows.

$$V_{surge} = V_{IN} + R1 \times 200 \text{ mA} \dots\dots(2)$$

(2) Hall input pin voltage (IN- and IN+ pins)

IN- and IN+ are input pins for the Hall element output. Set the Hall element output voltage to within the range of 0 V to  $V_{IN} - 1.5$  V.

The gain between the Hall input pin and the output pin is 100 dB or greater. The offset voltage of the Hall input amplifier is  $\pm 7$  mV therefore, the Hall element output must be set with the offset voltage ( $\pm 7$  mV) considered.

(3) Output transistors (OUT1 and OUT2 pins)

Output current  $I_O = 1.5$  A max.

Output saturation voltage  $V_O \text{ sat} = 1.15$  V/1.0 A (typ.)

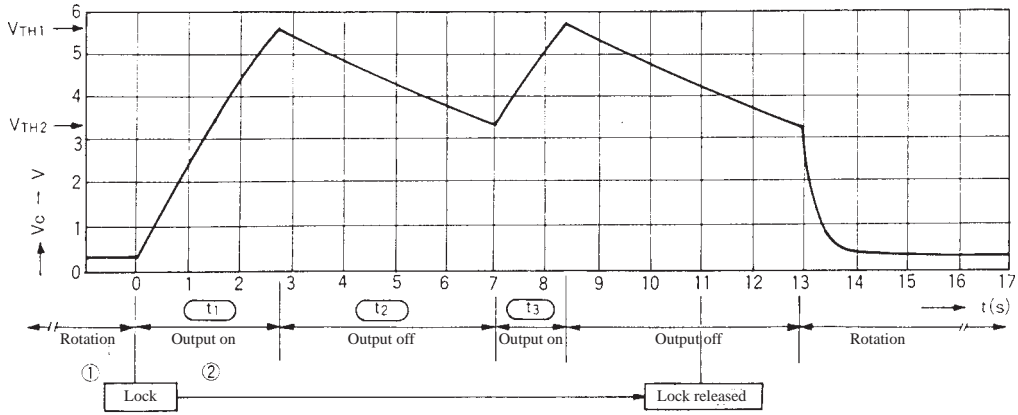
The LB1669 requires one of the three types of output protection.

- ① When external capacitors are connected between OUT and GND, the capacitance should not exceed 10  $\mu$ F. Use capacitance that will hold kickback voltage and back voltage to 60 V or less.
- ② When external Zener diodes are connected, use one that will have a cutoff voltage of 40 V or less. If radio noise is a problem, insert a capacitor of 0.01 to 0.1  $\mu$ F between B1 and B2.
- ③ When external capacitors are connected between OUT and B, use one that will hold kickback voltage to 40 V or less. If it oscillates, insert resistance in series with the capacitor.

(4) Output protection function (C pin)

Capacitor pin used in forming an automatic recovery circuit. If rotation is stopped due to overload, the pin voltage level increases and then forces the output to become inactive. In this case, after proper load adjustment, the output returns to the 'drive' mode from the 'stop' mode automatically. By changing the capacitor value, the lock detect time period can be set.

For 1  $\mu\text{F}$  lock detection time about 2 seconds  
 lock protection time (output ON) about 1 second  
 (output OFF) about 6 seconds



Automatic Recovery Circuit C Pin Voltage

- ① When a fan is rotating, the capacitor is charged at 3  $\mu\text{A}$  (typ) and discharged through the C with pulses according to the rotational speed.
- ② When a fan is locked, no discharge occurs through the C and the C voltage rises, turning OFF the output at  $0.8 \times V_{\text{IN}}$ .
- ③ When the output is turned OFF, discharge occurs through the C at 0.44  $\mu\text{A}$  (typ). If the lock is not released when the C voltage drops to  $V_{\text{TH2}}$ , the capacitor is charged to  $V_{\text{TH1}}$  again. (At this moment, the output is turned ON.) These operations ② and ③ are repeated at a cycle of approximately  $t_{\text{on}} : t_{\text{off}} = 1 : 6$  to protect the motor.
- ④ If the lock is released when the C voltage drops to  $V_{\text{TH2}}$ , the output is turned ON, starting rotation.

(5) Rotation detect signal (RD pin)

Open collector output (Drive mode: "L", Stop mode: "H")

(6) Radio noise reducing (pins B1 and B2)

These are the base pins for Darlington connected output transistors.  
 If radio noise is a problem, add a capacitor of 0.01 to 0.1  $\mu\text{F}$  or less.

(7) Thermal shutdown function

Shutdown the driver output in case of coil short-circuiting and abnormal IC heating.

- Specifications of any and all SANYO products described or contained herein stipulate the performance, characteristics, and functions of the described products in the independent state, and are not guarantees of the performance, characteristics, and functions of the described products as mounted in the customer's products or equipment. To verify symptoms and states that cannot be evaluated in an independent device, the customer should always evaluate and test devices mounted in the customer's products or equipment.
- SANYO Electric Co., Ltd. strives to supply high-quality high-reliability products. However, any and all semiconductor products fail with some probability. It is possible that these probabilistic failures could give rise to accidents or events that could endanger human lives, that could give rise to smoke or fire, or that could cause damage to other property. When designing equipment, adopt safety measures so that these kinds of accidents or events cannot occur. Such measures include but are not limited to protective circuits and error prevention circuits for safe design, redundant design, and structural design.
- In the event that any or all SANYO products(including technical data, services) described or contained herein are controlled under any of applicable local export control laws and regulations, such products must not be exported without obtaining the export license from the authorities concerned in accordance with the above law.
- No part of this publication may be reproduced or transmitted in any form or by any means, electronic or mechanical, including photocopying and recording, or any information storage or retrieval system, or otherwise, without the prior written permission of SANYO Electric Co., Ltd.
- Any and all information described or contained herein are subject to change without notice due to product/technology improvement, etc. When designing equipment, refer to the "Delivery Specification" for the SANYO product that you intend to use.
- Information (including circuit diagrams and circuit parameters) herein is for example only ; it is not guaranteed for volume production. SANYO believes information herein is accurate and reliable, but no guarantees are made or implied regarding its use or any infringements of intellectual property rights or other rights of third parties.

This catalog provides information as of August, 1999. Specifications and information herein are subject to change without notice.