

# SMT Power Inductor

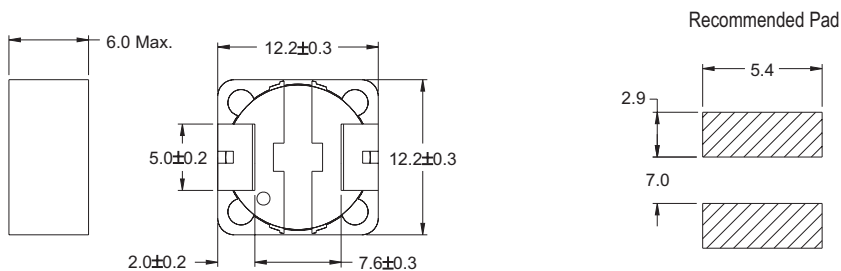
## SIQ125 Type

### Features

- Low profile (6.0mm max. Height), high current (8A, 1.3uH) SMD type.
- Magnetically shielded, suitable for high density mounting.
- High energy storage and low DCR.
- Provided with embossed carrier tape packing.
- Ideal for power source circuits, DC-DC converter, DC-AC inverters inductor application.
- In addition to the standard versions shown here, custom inductors are available to meet your exact requirements.

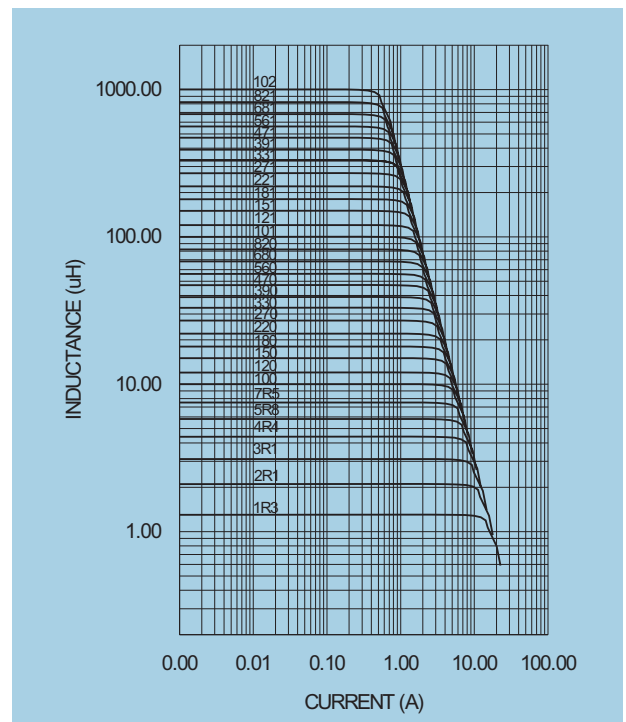


### Mechanical Dimension: Unit: mm



### Electrical Characteristics:

PART NO.	L★ (uH)	DCR (Ω) MAX	I <sub>RATED</sub> ★★ (Adc)
SIQ125-1R3	1.3	0.012	8.0
SIQ125-2R1	2.1	0.014	7.0
SIQ125-3R1	3.1	0.017	6.0
SIQ125-4R4	4.4	0.020	5.0
SIQ125-5R8	5.8	0.021	4.4
SIQ125-7R5	7.5	0.024	4.2
SIQ125-100	10	0.025	4.0
SIQ125-120	12	0.027	3.5
SIQ125-150	15	0.030	3.3
SIQ125-180	18	0.034	3.0
SIQ125-220	22	0.040	2.8
SIQ125-270	27	0.051	2.3
SIQ125-330	33	0.057	2.1
SIQ125-390	39	0.068	2.0
SIQ125-470	47	0.075	1.8
SIQ125-560	56	0.11	1.7
SIQ125-680	68	0.12	1.5
SIQ125-820	82	0.14	1.4
SIQ125-101	100	0.16	1.3
SIQ125-121	120	0.17	1.1
SIQ125-151	150	0.23	1.0
SIQ125-181	180	0.29	0.90
SIQ125-221	220	0.40	0.80
SIQ125-271	270	0.46	0.75
SIQ125-331	330	0.51	0.68
SIQ125-391	390	0.69	0.65
SIQ125-471	470	0.77	0.58
SIQ125-561	560	0.86	0.54
SIQ125-681	680	1.20	0.48
SIQ125-821	820	1.34	0.43
SIQ125-102	1000	1.53	0.40



★ Tolerance of inductance

1.3~7.5uH +30/-20% 10~1000uH±20%

★★ I<sub>RATED</sub>: rated current. ΔL<20%, ΔT<45°C at I<sub>RATED</sub>

★★★ Operating temperature: -20°C to 105°C (including self-temperature rise)

★★★★ Test condition at 25°C: 1.3~7.5uH 100KHz,0.1V 10~1000uH 1KHz,1V



**DELTA ELECTRONICS, INC.**

(TAOYUAN PLANT CPBG) 252, SAN YING ROAD, KUEISAN INDUSTRIAL ZONE, TAOYUAN SHIEN, 333, TAIWAN, R.O.C.

TEL: 886-3-3591968; FAX: 886-3-3591991

<http://www.deltaww.com>