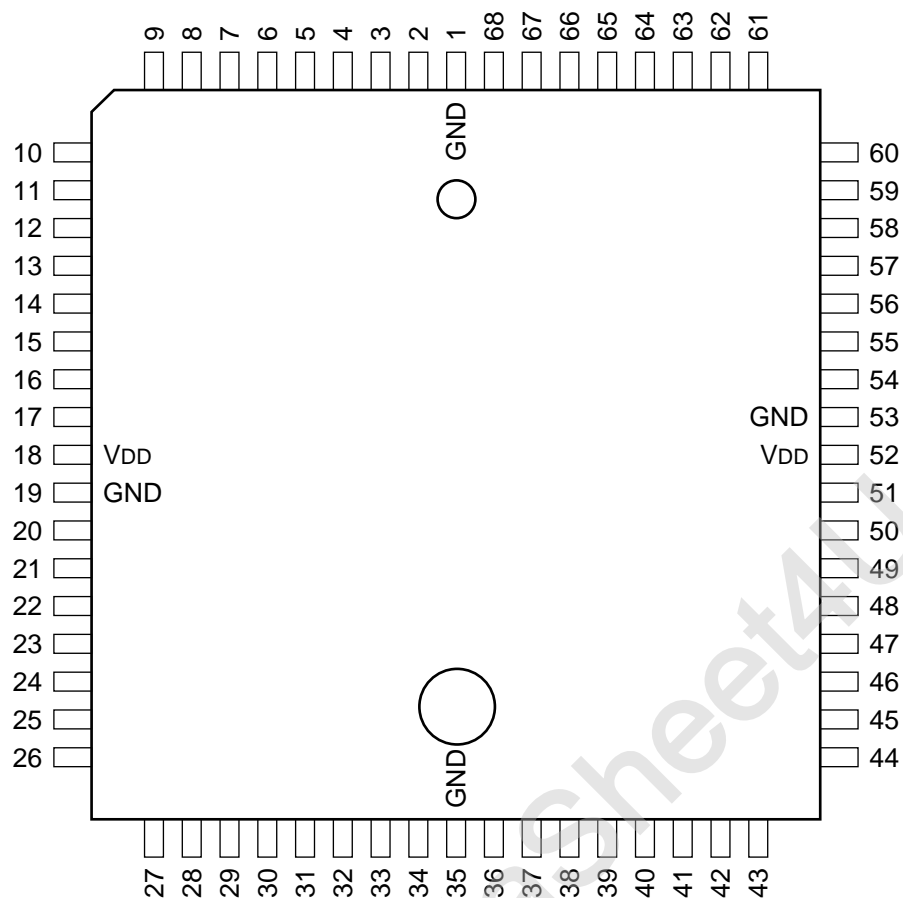


C-MOS SERIAL INTERFACE TRANSMITTER FOR NTSC/PAL

—TOP VIEW—



PIN NO.	I/O	SIGNAL	PIN NO.	I/O	SIGNAL	PIN NO.	I/O	SIGNAL	PIN NO.	I/O	SIGNAL
1	—	GND	18	—	VDD	35	—	GND	52	—	VDD
2	O	DIE	19	—	GND	36	I	VID4	53	—	GND
3	O	ENMOD0	20	I	4 fsc	37	I	VID3	54	O	MD4
4	O	ENMOD1	21	I	*VAREN	38	I	VID2	55	O	MD3
5	I	AUX4	22	I	VID9	39	I	VID1	56	O	MD2
6	I	AUX5	23	I	VID8	40	I	VID0	57	O	MD1
7	I	AUX6	24	I	VID7	41	I	CF2	58	O	MD0
8	I	AUX7	25	I	VID6	42	I	CF1	59	I	AUDMD
9	I	AUX8	26	I	VID5	43	I	CF0	60	I	HPLN
10	I	DBN7	27	I	SYNC	44	I	SPADJ2	61	I	AUX0
11	I	DBN6	28	I	DSP	45	I	SPADJ1	62	I	AUX1
12	I	DBN5	29	I	DIP	46	I	SPADJ0	63	I	AUX2
13	I	DBN4	30	O	MD9	47	I	*ENM1	64	I	AUX3
14	I	DBN3	31	O	MD8	48	I	*ENM0	65	I	*OEPOLSEL
15	I	DBN2	32	O	MD7	49	I	*SWCH	66	O	ERROR
16	I	DBN1	33	O	MD6	50	I	*EXCH	67	O	VPULSE
17	I	DBN0	34	O	MD5	51	I	*RESET	68	O	ITRSTMG

* : USED FOR DEVICE TEST

40	VID0	MD0	58
39	VID1	MD1	57
38	VID2	MD2	56
37	VID3	MD3	55
36	VID4	MD4	54
26	VID5	MD5	34
25	VID6	MD6	33
24	VID7	MD7	32
23	VID8	MD8	31
22	VID9	MD9	30
10	DBN0		
11	DBN1		
12	DBN2		
13	DBN3		
14	DBN4		
15	DBN5		
16	DBN6		
17	DBN7		
61	AUX0		
62	AUX1		
63	AUX2		
64	AUX3		
5	AUX4		
6	AUX5		
7	AUX6		
8	AUX7		
9	AUX8		
59	AUDMD		
28	DSP		
29	DIP	ERROR	66
43	CF2	DIE	2
42	CF1	ENMOD0	3
41	CF0	ENMOD1	4
27	SYNC	VPULSE	67
		ITRSTMG	68
20	4 fsc		
60	HPLN		
44	SPADJ2		
45	SPADJ1		
46	SPADJ0		

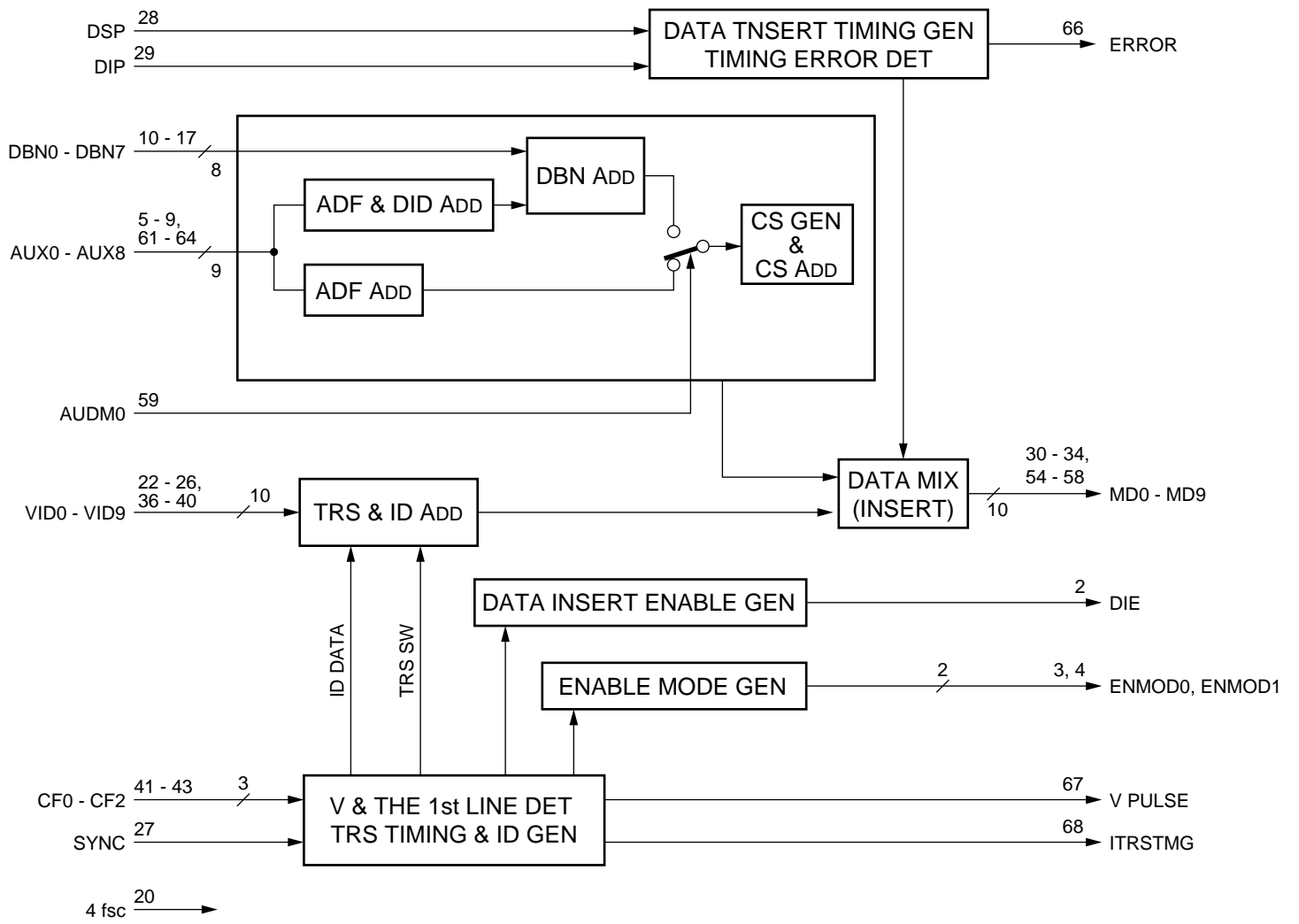
INPUT

- 4 fsc : SYSTEM CLOCK
- AUDMD : AUDIO MODE (SET TO HIGH)
- AUX0 - AUX8 : AUXILIARY DATA
- CF0 - CF2 : COLOR FRAMING PULSE
- DBN0 - DBN7 : DATA BLOCK NO. FOR AUDIO MODE DATA
- DIP : DATA INSERT PULSE
- DSP : DATA START PULSE
- HPLN : NTSC/PAL SELECT (NTSC: LOW/PAL: HIGH)
- SPADJ0 - SPADJ2 : SYNC PHASE ADJUST
- SYNC : COMPOSITE SYNC
- VID0 - VID9 : COMPOSITE DIGITAL VIDEO DATA

- ENM0 - ENM1 : USED FOR DEVICE TEST
- SWCH : USED FOR DEVICE TEST
- EXCH : USED FOR DEVICE TEST
- RESET : USED FOR DEVICE TEST
- OEPOLSEL : USED FOR DEVICE TEST
- VAREN : USED FOR DEVICE TEST

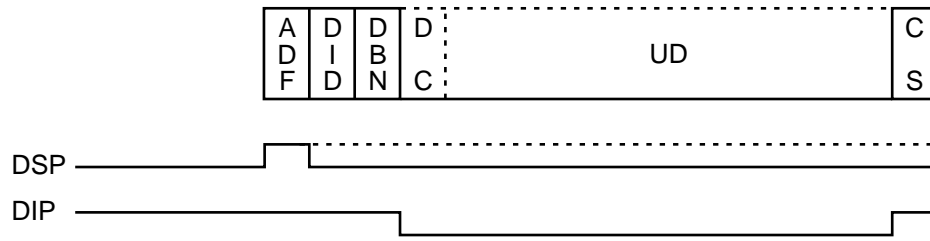
OUTPUT

- DIE : DATA INSERT ENABLE
- ENMOD0, ENMOD1 : ENABLE MODE
- ERROR : ERROR FLAG
- ITRS TMG : INPUT TRS TIMING
- MD0 - MD9 : MIXED DATA
- VPULSE : V PULSE (INDICATES THE FIELD START POINT)

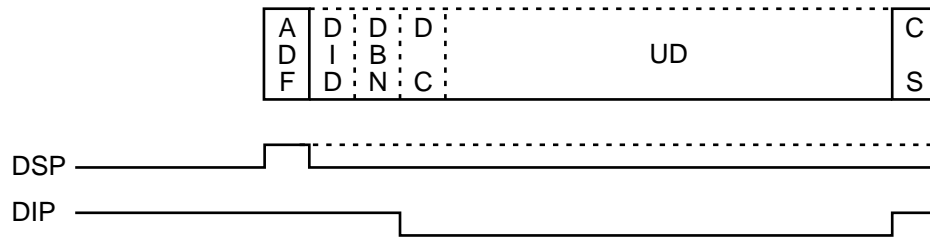


INPUT TIMING DIAGRAM

AUDIO MODE ONLY

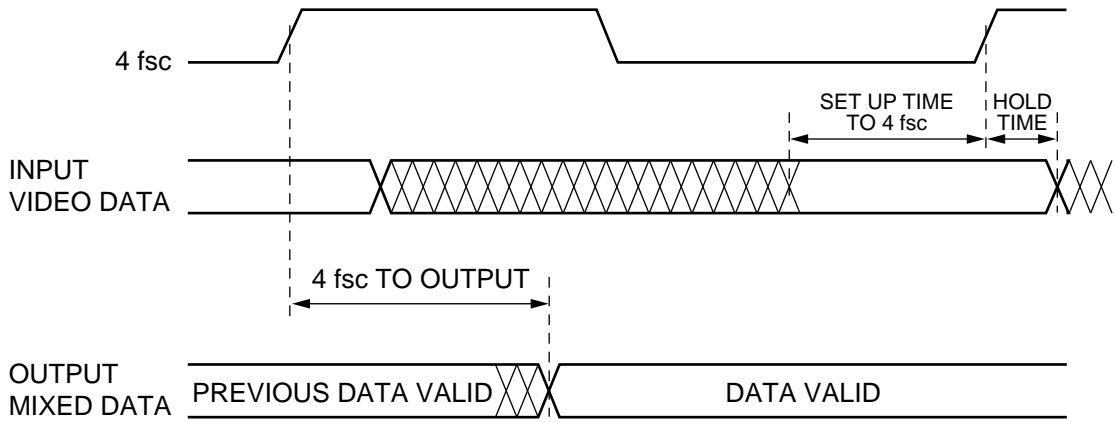


OTHER AUX. MODE



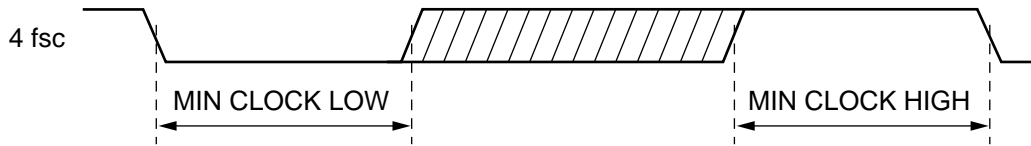
SWITCHING CHARACTERISTICS

INPUT OUTPUT TIMING



SET UP TIME TO 4 fsc	0 ns
HOLD TIME	10 ns
4 fsc TO OUTPUT	13 ns

CLOCK WAVEFORMS



MIN CLOCK LOW	20 ns
MIN CLOCK HIGH	20 ns