

2,000 V - 5,000 V Rectifiers
0.15 A - 0.50 A Forward Current
70 ns Recovery Time

1N6521U
1N6523U
1N6525U

SURFACE MOUNT
HERMETICALLY SEALED

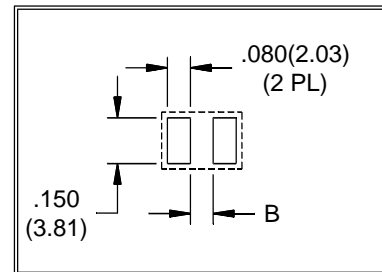
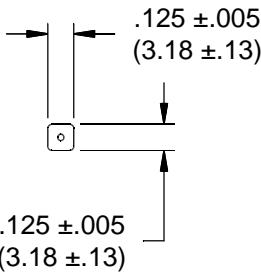
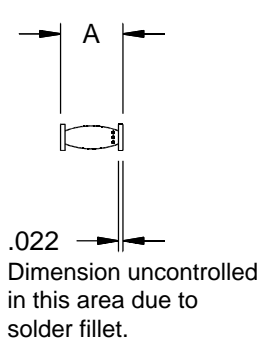


ELECTRICAL CHARACTERISTICS AND MAXIMUM RATINGS

Part Number	Working Reverse Voltage (V _{rwm})	Average Rectified Current (I _o)		Reverse Current @ V _{rwm} (I _r)		Forward Voltage (V _f)		1 Cycle Surge Current t _p =8.3ms (I _{fsm})	Repetitive Surge Current (I _{frm})	Reverse Recovery Time (3) (T _{rr})	Thermal Impd. θ _{J-C}	Junction Cap. @50VDC @1kHz (C _j)
		55°C(1)	100°C(2)	25°C	100°C	25°C	25°C	25°C	25°C	25°C	25°C	25°C
	Volts	Amps	Amps	µA	µA	Volts	Amps	Amps	Amps	ns	°C/W	pF
1N6521U	2000	0.50	0.250	0.5	20	3.0	0.50	25	5	70	6	8
1N6523U	3000	0.25	0.125	0.5	20	5.0	0.25	15	3	70	6	4
1N6525U	5000	0.15	0.075	0.5	20	7.0	0.15	10	2	70	6	3

(1)TC=55°C (2)TC=100°C (3)I_f=0.5A, I_r=1.0A, I_{rr}=0.25A *Op. Temp.= -65°C to +175°C Stg. Temp.= -65°C to +200°C

Markings:
 Three Dots for polarity.



Part	A	B
1N6521U	.265 ±.010 (6.73 ±.25)	.170(4.32)
1N6523U	.280 ±.010 (7.11 ±.25)	.185(4.70)
1N6525U	.300 ±.010 (7.62 ±.25)	.205(5.21)



Dimensions: In. (mm) • All temperatures are ambient unless otherwise noted. • Data subject to change without notice.



VOLTAGE MULTIPLIERS INC.
 8711 W. Roosevelt Ave.
 Visalia, CA 93291

TEL 559-651-1402
 FAX 559-651-0740
 www.voltagemultipliers.com

6

1N6521U 1N6523U 1N6525U

