

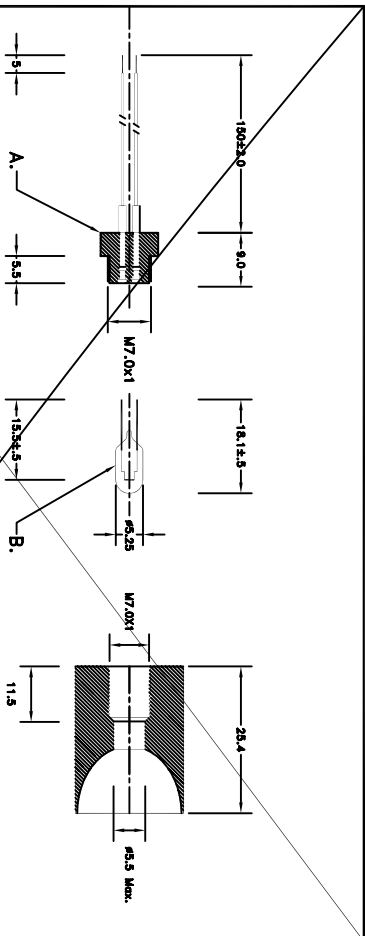
SPECIFICATIONS:
 A. H320-150 HOLDER.
 B. LAMP 187 OR 188 PER CUSTOMER CHOICE.
 C. MR6(G)-71 ELLIPSOIDAL REFLECTOR (OPTIONAL GOLD COATED). QTY: 1
 QTY: 1

ORDERING INFORMATION:

MR6E-187 - ELLIPSOIDAL REFLECTOR EQUIPPED WITH 187 LAMP.
 4.2V, 1.05A, 3.88 MSCP, 650 HOURS LIFE.
MR6E-188 - ELLIPSOIDAL REFLECTOR EQUIPPED WITH 188 LAMP.
 5.0V, 1.00A, 3.34 MSCP, 10,000 HOURS LIFE.
MR6E-187 - GOLD COATED ELLIPSOIDAL REFLECTOR EQUIPPED WITH 187 LAMP.
 4.2V, 1.05A, 3.88 MSCP, 650 HOURS LIFE.
MR6E-188 - GOLD COATED ELLIPSOIDAL REFLECTOR EQUIPPED WITH 188 LAMP.
 5.0V, 1.00A, 3.34 MSCP, 10,000 HOURS LIFE.

TOLERANCES: ±0.1mm EXCEPT WHERE IS NOTED.

| | |
|------------------------|--|
| | |
| SCALE: none | DRAWN BY: VALSIBU |
| DATE: 08/22/01 | APPROVED BY: |
| MR6(G)-XXX | (187/188 Lamp - Ellipsoidal Reflector Assn.) |
| DIMENSIONS-MILLIMETERS | Drawing Number: 155-1526 |



SPECIFICATIONS:
 A. H320-150 HOLDER.
 B. LAMP 187 OR 188 PER CUSTOMER CHOICE.
 C. MR6(G)-71 ELLIPSOIDAL REFLECTOR (OPTIONAL GOLD COATED). QTY: 1
 QTY: 1

ORDERING INFORMATION:

MR6E-187 - ELLIPSOIDAL REFLECTOR EQUIPPED WITH 187 LAMP.
 4.2V, 1.05A, 3.88 MSCP, 650 HOURS LIFE.
MR6E-188 - ELLIPSOIDAL REFLECTOR EQUIPPED WITH 188 LAMP.
 5.0V, 1.00A, 3.34 MSCP, 10,000 HOURS LIFE.
MR6E-187 - GOLD COATED ELLIPSOIDAL REFLECTOR EQUIPPED WITH 187 LAMP.
 4.2V, 1.05A, 3.88 MSCP, 650 HOURS LIFE.
MR6E-188 - GOLD COATED ELLIPSOIDAL REFLECTOR EQUIPPED WITH 188 LAMP.
 5.0V, 1.00A, 3.34 MSCP, 10,000 HOURS LIFE.

TOLERANCES: ±0.1mm EXCEPT WHERE IS NOTED.

| | |
|------------------------|--|
| | |
| SCALE: none | DRAWN BY: VALSIBU |
| DATE: 08/16/01 | APPROVED BY: |
| MR6(G)-XXX | (187/188 Lamp - Ellipsoidal Reflector Assn.) |
| DIMENSIONS-MILLIMETERS | Drawing Number: 155-1525 |