

# Square Body Semiconductor Fuses

700/1300 VAC ■ Very Fast-Acting ■ 63 – 2500 Amperes

**NEW**



Littelfuse's North American style square body semiconductor fuses provide maximum flexibility in equipment design and ultimate protection for today's power conversion equipment. Available in different body sizes and multiple mounting styles, the broad range of ampere ratings allows great flexibility in equipment design.

Engineered to provide state-of-the-art protection for SCR's, diodes, thyristors, GTO's, and IGBT devices, Littelfuse square body fuses have pure die-cut elements embedded in solidified sand to control arcing and lower I<sup>2</sup>t. All fuses are also equipped with a blown fuse trip indicator.

**Special Purpose Fuses**

## FEATURES

- **Choice of mounting styles** provides a wide choice for equipment design.
- **Broad range of ampere ratings** in a given body size for design flexibility.
- **Very low I<sup>2</sup>t** minimizes damage to protected components.
- **Superior cycling ability** for long, reliable life on high cyclic loading.
- **Extremely fast-acting and current limiting** for improved protection to equipment.

## APPLICATIONS

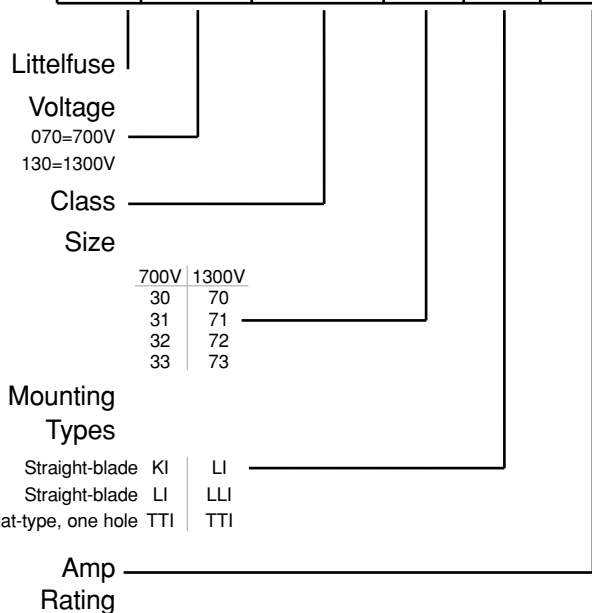
Protection of rectifiers, inverters, DC drives, UPS systems, reduced voltage motor starters, and other equipment in globally accepted applications.

## SPECIFICATIONS

- Voltage Rating:** AC: 700 Volts (LA070)  
1300 Volts (LA130)  
DC: Contact factory
- Interrupting Rating:** AC: 200,000 Amperes (LA070)  
100,000 Amperes (LA130)  
DC: Contact factory
- Ampere Range:** 63 – 2500 Amperes
- Approvals:** UL Recognized Component

## ORDERING INFORMATION

**LA 070 URD 31 LI 350**



# Square Body Semiconductor Fuses

700/1300 VAC ■ Very Fast-Acting ■ 63 – 2500 Amperes



POWR-GARD™ Products

## 700 Volt North American Style Ratings and Application Data

| Body Size | Amp Rating | Rated Voltage | Melting I <sub>t</sub> <sup>2</sup> (A <sup>2</sup> S x 10 <sup>3</sup> ) | Total I <sub>t</sub> <sup>2</sup> @ Rated Voltage (A <sup>2</sup> S x 10 <sup>3</sup> ) | **Watts Loss @ Rated Current (W) | Long Blade Catalog No. Type LI | Short Blade Catalog No. Type KI | Tapped Terminal Catalog No. Type TTI |
|-----------|------------|---------------|---|---|----------------------------------|--------------------------------|---------------------------------|--------------------------------------|
| 30        | 63         | 700           | 0.2   | 1.2   | 14                               | LA070URD30LI0063               | LA070URD30KI0063                | LA070URD30TTI0063                    |
|           | 80         | 700           | 0.33  | 1.9   | 19                               | LA070URD30LI0080               | LA070URD30KI0080                | LA070URD30TTI0080                    |
|           | 100        | 700           | 0.47  | 2.7   | 26                               | LA070URD30LI0100               | LA070URD30KI0100                | LA070URD30TTI0100                    |
|           | 125        | 700           | 0.85  | 4.9   | 30                               | LA070URD30LI0125               | LA070URD30KI0125                | LA070URD30TTI0125                    |
|           | 160        | 700           | 1.6   | 9.2   | 37                               | LA070URD30LI0160               | LA070URD30KI0160                | LA070URD30TTI0160                    |
|           | 200        | 700           | 3   | 16.7  | 42/43                            | LA070URD30LI0200               | LA070URD30KI0200                | LA070URD30TTI0200                    |
|           | 250        | 700           | 5.8   | 32.4  | 48/50                            | LA070URD30LI0250               | LA070URD30KI0250                | LA070URD30TTI0250                    |
|           | 315        | 700           | 12  | 67  | 53/55                            | LA070URD30LI0315               | LA070URD30KI0315                | LA070URD30TTI0315                    |
|           | 350        | 700           | 15.5  | 86  | 57/60                            | LA070URD30LI0350               | LA070URD30KI0350                | LA070URD30TTI0350                    |
|           | 400        | 700           | 23  | 130   | 60/65                            | LA070URD30LI0400               | LA070URD30KI0400                | LA070URD30TTI0400                    |
|           | 450        | 700           | 26  | 165   | 80/88                            | LA070URD30LI0450               | LA070URD30KI0450                | LA070URD30TTI0450                    |
|           | 500        | 700           | 41  | 264   | 80/88                            | LA070URD30LI0500               | LA070URD30KI0500                | LA070URD30TTI0500                    |
|           | 550        | 700           | 52  | 330   | 80/90                            | LA070URD30LI0550               | LA070URD30KI0550                | LA070URD30TTI0550                    |
| 31        | 200        | 700           | 2.5   | 14.6  | 45                               | LA070URD31LI0200               | LA070URD31KI0200                | LA070URD31TTI0200                    |
|           | 250        | 700           | 4.7   | 27  | 52                               | LA070URD31LI0250               | LA070URD31KI0250                | LA070URD31TTI0250                    |
|           | 315        | 700           | 7.5   | 43  | 65                               | LA070URD31LI0315               | LA070URD31KI0315                | LA070URD31TTI0315                    |
|           | 350        | 700           | 10.5  | 59  | 67                               | LA070URD31LI0350               | LA070URD31KI0350                | LA070URD31TTI0350                    |
|           | 400        | 700           | 19  | 110   | 68                               | LA070URD31LI0400               | LA070URD31KI0400                | LA070URD31TTI0400                    |
|           | 450        | 700           | 26.5  | 150   | 70                               | LA070URD31LI0450               | LA070URD31KI0450                | LA070URD31TTI0450                    |
|           | 500        | 700           | 37  | 210   | 70/72                            | LA070URD31LI0500               | LA070URD31KI0500                | LA070URD31TTI0500                    |
|           | 550        | 700           | 52  | 300   | 70/75                            | LA070URD31LI0550               | LA070URD31KI0550                | LA070URD31TTI0550                    |
|           | 630        | 700           | 75  | 421   | 75/85                            | LA070URD31LI0630               | LA070URD31KI0630                | LA070URD31TTI0630                    |
|           | 700        | 700           | 95  | 530   | 85/95                            | LA070URD31LI0700               | LA070URD31KI0700                | LA070URD31TTI0700                    |
| 800       | 700        | 140           | 880   | 105/120   | LA070URD31LI0800                 | LA070URD31KI0800               | LA070URD31TTI0800               |                                      |
| 32        | 400        | 700           | 15  | 86  | 72/75                            | LA070URD32LI0400               | LA070URD32KI0400                | LA070URD32TTI0400                    |
|           | 450        | 700           | 22  | 124   | 77/80                            | LA070URD32LI0450               | LA070URD32KI0450                | LA070URD32TTI0450                    |
|           | 500        | 700           | 28  | 157   | 85/90                            | LA070URD32LI0500               | LA070URD32KI0500                | LA070URD32TTI0500                    |
|           | 550        | 700           | 37  | 211   | 90/95                            | LA070URD32LI0550               | LA070URD32KI0550                | LA070URD32TTI0550                    |
|           | 630        | 700           | 54  | 302   | 95/105                           | LA070URD32LI0630               | LA070URD32KI0630                | LA070URD32TTI0630                    |
|           | 700        | 700           | 76  | 432   | 100/110                          | LA070URD32LI0700               | LA070URD32KI0700                | LA070URD32TTI0700                    |
|           | 800        | 700           | 115   | 648   | 110/120                          | LA070URD32LI0800               | LA070URD32KI0800                | LA070URD32TTI0800                    |
|           | 900        | 700           | 170   | 972   | 110/125                          | LA070URD32LI0900               | LA070URD32KI0900                | LA070URD32TTI0900                    |
|           | 1000       | 700           | 240   | 1350  | 115/135                          | LA070URD32LI1000               | LA070URD32KI1000                | LA070URD32TTI1000                    |
|           | 1100       | 650           | 270   | 1620  | 140/165                          | LA065URD32LI1100               | -                               | LA065URD32TTI1100                    |
|           | 1250       | 600           | 410   | 2100  | 150/180                          | LA060URD32LI1250               | -                               | LA060URD32TTI1250                    |
|           | 1400       | 550           | 555   | 2600  | 160/190                          | LA055URD32LI1400               | -                               | LA055URD32TTI1400                    |
|           | 1600       | 550           | 870   | 4000  | 165/195                          | LA055URD32LI1600               | -                               | LA055URD32TTI1600                    |
| 1800      | 500        | 1050          | 4400  | 195/330   | LA050URD32LI1800                 | -                              | LA050URD32TTI1800               |                                      |
| 33        | 500        | 700           | 19  | 108   | 105                              | LA070URD33LI0500               | LA070URD33KI0500                | LA070URD33TTI0500                    |
|           | 550        | 700           | 27  | 151   | 105/110                          | LA070URD33LI0550               | LA070URD33KI0550                | LA070URD33TTI0550                    |
|           | 630        | 700           | 40  | 227   | 110/120                          | LA070URD33LI0630               | LA070URD33KI0630                | LA070URD33TTI0630                    |
|           | 700        | 700           | 55  | 324   | 115/125                          | LA070URD33LI0700               | LA070URD33KI0700                | LA070URD33TTI0700                    |
|           | 800        | 700           | 95  | 529   | 120/130                          | LA070URD33LI0800               | LA070URD33KI0800                | LA070URD33TTI0800                    |
|           | 900        | 700           | 135   | 760   | 120/135                          | LA070URD33LI0900               | LA070URD33KI0900                | LA070URD33TTI0900                    |
|           | 1000       | 700           | 170   | 970   | 135/155                          | LA070URD33LI1000               | LA070URD33KI1000                | LA070URD33TTI1000                    |
|           | 1100       | 700           | 240   | 1360  | 135/160                          | LA070URD33LI1100               | LA070URD33KI1100                | LA070URD33TTI1100                    |
|           | 1250       | 700           | 350   | 2000  | 150/180                          | LA070URD33LI1250               | LA070URD33KI1250                | LA070URD33TTI1250                    |
|           | 1400       | 700           | 480   | 2700  | 160/200                          | LA070URD33LI1400               | LA070URD33KI1400                | LA070URD33TTI1400                    |
|           | 1600       | 650           | 555   | 3250  | 210/240                          | LA065URD33LI1600               | -                               | LA065URD33TTI1600                    |
|           | 1800       | 650           | 720   | 4330  | 225/260                          | LA065URD33LI1800               | -                               | LA065URD33TTI1800                    |
|           | 2000       | 600           | 950   | 5000  | 250/290                          | LA060URD33LI2000               | -                               | LA060URD33TTI2000                    |
|           | 2250       | 550           | 1250  | 5900  | 280/330                          | LA050URD33LI2250               | -                               | LA050URD33TTI2250                    |
|           | 2500       | 500           | 1870  | 7600  | 280/330                          | LA050URD33LI2500               | -                               | LA050URD33TTI2500                    |

Special Purpose Fuses

\*\* Watts loss data is published for both blade and tapped style mounting configurations. When two watts loss values are shown this represents tapped/blade values respectively.

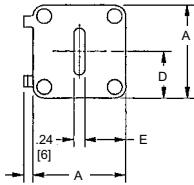
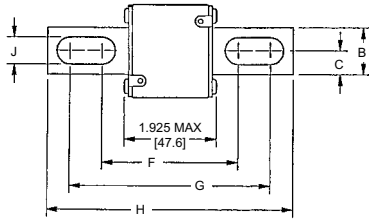
Contact Littelfuse for characteristic curves.

# Square Body Semiconductor Fuses

700/1300 VAC ■ Very Fast-Acting ■ 63 – 2500 Amperes



## TYPES KI AND LI



## North American Straight Blade, Type KI

### DIMENSIONS - 700V Fuses

Dimensions for reference only.

| CATALOG NUMBER          | DIMENSIONS IN INCHES (mm in parentheses) |              |                |                |                |                |                 |                 |                |  |
|-------------------------|--|--------------|----------------|----------------|----------------|----------------|-----------------|-----------------|----------------|--|
|                         | A  | B            | C              | D              | E              | F              | G               | H               | J              |  |
| LA070URD30KI (63-550)   | 1.57<br>(40)                             | 0.98<br>(25) | 0.49<br>(12.5) | 0.83<br>(21)   | 0.71<br>(18)   | 2.68<br>(68)   | 4.21<br>(107)   | 5.08<br>(129)   | 0.41<br>(10.5) |  |
| LA070URD31KI (200-800)  | 2.01<br>(51)                             | 0.98<br>(25) | 0.49<br>(12.5) | 1.0<br>(25.5)  | 0.89<br>(22.5) | 2.66<br>(67.6) | 4.22<br>(107.1) | 5.07<br>(128.8) | 0.56<br>(14.3) |  |
| LA070URD32KI (400-1000) | 2.36<br>(60)                             | 1.26<br>(32) | 0.63<br>(16)   | 1.18<br>(30)   | 1.06<br>(27)   | 2.92<br>(74.2) | 4.29<br>(109)   | 5.28<br>(134)   | 0.57<br>(14.6) |  |
| LA070URD33KI (500-1400) | 2.93<br>(74.5)                           | 1.57<br>(40) | 0.79<br>(20)   | 1.46<br>(37.2) | 1.35<br>(34.2) | 2.97<br>(75.4) | 4.24<br>(107.6) | 5.28<br>(134)   | 0.63<br>(15.9) |  |

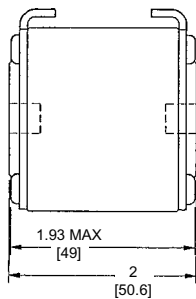
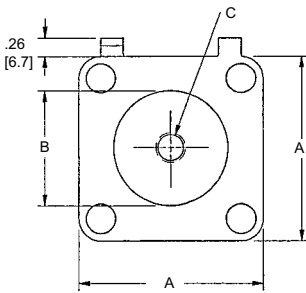
## North American Straight Blade Types LI

### DIMENSIONS - 700V Fuses

Dimensions for reference only.

| CATALOG NUMBER           | DIMENSIONS IN INCHES (mm in parentheses) |              |                |                |                |                |                 |                 |                |  |
|--------------------------|--|--------------|----------------|----------------|----------------|----------------|-----------------|-----------------|----------------|--|
|                          | A  | B            | C              | D              | E              | F              | G               | H               | J              |  |
| LA070URD30LI (63-550)    | 1.57<br>(40)                             | 0.98<br>(25) | 0.49<br>(12.5) | 0.83<br>(21)   | 0.71<br>(18)   | 3.45<br>(87.6) | 4.98<br>(126.6) | 5.85<br>(148.6) | 0.41<br>(10.5) |  |
| LA070URD31LI (200-800)   | 2.01<br>(51)                             | 0.98<br>(25) | 0.49<br>(12.5) | 1.0<br>(25.5)  | 0.89<br>(22.5) | 3.61<br>(91.6) | 4.82<br>(122.4) | 5.85<br>(148.6) | 0.57<br>(14.6) |  |
| LA070URD32LI (400-1000)  | 2.36<br>(60)                             | 1.26<br>(32) | 0.63<br>(16)   | 1.18<br>(30)   | 1.06<br>(27)   | 3.71<br>(94.2) | 5.08<br>(129)   | 6.02<br>(153)   | 0.57<br>(14.6) |  |
| LA065URD32LI (1250)      |  |              |                |                |                |                |                 |                 |                |  |
| LA055URD32LI (1400-1600) |  |              |                |                |                |                |                 |                 |                |  |
| LA050URD32LI (1800)      |  |              |                |                |                |                |                 |                 |                |  |
| LA070URD33LI (500-1400)  | 2.93<br>(74.5)                           | 1.57<br>(40) | 0.79<br>(20)   | 1.46<br>(37.2) | 1.35<br>(34.2) | 3.72<br>(94.4) | 4.98<br>(126.6) | 6.02<br>(153)   | 0.63<br>(15.9) |  |
| LA065URD33LI (1600-1800) |  |              |                |                |                |                |                 |                 |                |  |
| LA060URD33LI (2000)      |  |              |                |                |                |                |                 |                 |                |  |
| LA055URD33LI (2250)      |  |              |                |                |                |                |                 |                 |                |  |
| LA050URD33LI (2500)      |  |              |                |                |                |                |                 |                 |                |  |

## TYPE TTI



## North American Flat Single Hole, Type TTI

### DIMENSIONS - 700V

Dimensions for reference only.

| CATALOG NUMBER            | DIMENSIONS IN INCHES (mm) |                |              |
|---------------------------|---------------------------|----------------|--------------|
|                           | A                         | B              | C            |
| LA070URD30TTI (100-550)   | 1.57<br>(40)              | 1.00<br>(25)   | 5/16-18x .35 |
| LA070URD31TTI (200-800)   | 2.00<br>(50.8)            | 1.19<br>(30.2) | 5/16-18x .35 |
| LA070URD32TTI (400-1000)  | 2.37<br>(60.3)            | 1.50<br>(38.1) | 3/8-16x .35  |
| LA065URD32TTI (1100)      |                           |                |              |
| LA060URD32TTI (1250)      |                           |                |              |
| LA055URD32TTI (1400-1600) |                           |                |              |
| LA060URD33TTI (1800)      | 2.94<br>(74.5)            | 1.81<br>(46)   | 1/2-18x.35   |
| LA070URD33TTI (500-1400)  |                           |                |              |
| LA065URD33TTI (1600)      |                           |                |              |
| LA060URD33TTI (2000)      |                           |                |              |
| LA055URD33TTI (2250)      |                           |                |              |
| LA050URD33TTI (2500)      |                           |                |              |

Special Purpose Fuses

# Square Body Semiconductor Fuses

700/1300 VAC ■ Very Fast-Acting ■ 63 – 2500 Amperes



POWR-GARD™ Products

## 1300 Volt North American Style Ratings and Application Data

| Body Size | Amp Rating | Rated Voltage | Melting I <sup>2</sup> t (A <sup>2</sup> S x 10 <sup>3</sup> ) | Total I <sup>2</sup> t @ Rated Voltage (A <sup>2</sup> S x 10 <sup>3</sup> ) | **Watts Loss @ Rated Current (W) | Long Blade Catalog No. Type LI/LLI | Tapped Terminal Catalog No. Type TTI |
|-----------|------------|---------------|--|--|----------------------------------|------------------------------------|--------------------------------------|
| 70        | 63         | 1300          | 0.21   | 1.8  | 26                               | LA130URD70LI0063                   | LA130URD70TTI0063                    |
|           | 80         | 1300          | 0.47   | 4  | 27                               | LA130URD70LI0080                   | LA130URD70TTI0080                    |
|           | 100        | 1300          | 0.83   | 7.2  | 30                               | LA130URD70LI0100                   | LA130URD70TTI0100                    |
|           | 125        | 1300          | 1.3  | 11   | 38                               | LA130URD70LI0125                   | LA130URD70TTI0125                    |
|           | 160        | 1300          | 2.5  | 22   | 45                               | LA130URD70LI0160                   | LA130URD70TTI0160                    |
|           | 200        | 1300          | 4.7  | 40   | 54/56                            | LA130URD70LI0200                   | LA130URD70TTI0200                    |
|           | 250        | 1300          | 9.6  | 82   | 58/61                            | LA130URD70LI0250                   | LA130URD70TTI0250                    |
|           | 315        | 1300          | 20   | 172  | 66/72                            | LA130URD70LI0315                   | LA130URD70TTI0315                    |
|           | 350        | 1200          | 28   | 205  | 68/75                            | LA120URD70LI0350                   | LA120URD70TTI0350                    |
| 71        | 160        | 1300          | 2.6  | 22   | 46                               | LA130URD71LLI0160                  | LA130URD71TTI0160                    |
|           | 200        | 1300          | 4.7  | 40   | 54                               | LA130URD71LLI0200                  | LA130URD71TTI0200                    |
|           | 250        | 1300          | 8.9  | 76   | 61                               | LA130URD71LLI0250                  | LA130URD71TTI0250                    |
|           | 280        | 1300          | 12   | 102  | 68/70                            | LA130URD71LLI0280                  | LA130URD71TTI0280                    |
|           | 315        | 1300          | 16   | 138  | 73/76                            | LA130URD71LLI0315                  | LA130URD71TTI0315                    |
|           | 350        | 1300          | 22   | 190  | 76/80                            | LA130URD71LLI0350                  | LA130URD71TTI0350                    |
|           | 400        | 1300          | 38   | 330  | 76/80                            | LA130URD71LLI0400                  | LA130URD71TTI0400                    |
|           | 450        | 1300          | 47   | 405  | 87/95                            | LA130URD71LLI0450                  | LA130URD71TTI0450                    |
|           | 500        | 1200          | 68   | 500  | 90/100                           | LA120URD71LLI0500                  | LA120URD71TTI0500                    |
|           | 550        | 1200          | 84   | 620  | 98/112                           | LA120URD71LLI0550                  | LA120URD71TTI0550                    |
|           | 630        | 1100          | 125  | 930  | 105                              | LA110URD71LLI0630                  | -                                    |
| 630       | 1200       | 125           | 930  | 120  | -                                | LA120URD71TTI0630                  |                                      |
| 72        | 280        | 1300          | 10   | 90   | 72                               | LA130URD72LI0280                   | LA130URD72TTI0280                    |
|           | 315        | 1300          | 15   | 130  | 76                               | LA130URD72LI0315                   | LA130URD72TTI0315                    |
|           | 350        | 1300          | 21   | 180  | 77                               | LA130URD72LI0350                   | LA130URD72TTI0350                    |
|           | 400        | 1300          | 32   | 285  | 80                               | LA130URD72LI0400                   | LA130URD72TTI0400                    |
|           | 450        | 1300          | 44   | 380  | 87/89                            | LA130URD72LI0450                   | LA130URD72TTI0450                    |
|           | 500        | 1300          | 57   | 500  | 94/98                            | LA130URD72LI0500                   | LA130URD72TTI0500                    |
|           | 550        | 1300          | 68   | 590  | 110/120                          | LA130URD72LI0550                   | LA130URD72TTI0550                    |
|           | 630        | 1200          | 105  | 920  | 113                              | LA120URD72LI0630                   | -                                    |
|           | 630        | 1300          | 105  | 920  | 125                              | -                                  | LA130URD72TTI0630                    |
|           | 700        | 1100          | 145  | 1040   | 122                              | LA110URD72LI0700                   | -                                    |
|           | 700        | 1200          | 145  | 1040   | 140                              | -                                  | LA110URD72TTI0700                    |
|           | 800        | 1100          | 215  | 1590   | 125                              | LA110URD72LI0800                   | -                                    |
|           | 800        | 1200          | 215  | 1590   | 146                              | -                                  | LA120URD72TTI0800                    |
| 73        | 315        | 1300          | 12   | 102  | 84                               | LA130URD73LI0315                   | LA130URD73TTI0315                    |
|           | 350        | 1300          | 17   | 150  | 86                               | LA130URD73LI0350                   | LA130URD73TTI0350                    |
|           | 400        | 1300          | 25   | 220  | 93                               | LA130URD73LI0400                   | LA130URD73TTI0400                    |
|           | 450        | 1300          | 35   | 310  | 99/100                           | LA130URD73LI0450                   | LA130URD73TTI0450                    |
|           | 500        | 1300          | 44   | 390  | 110/112                          | LA130URD73LI0500                   | LA130URD73TTI0500                    |
|           | 550        | 1300          | 57   | 500  | 116/120                          | LA130URD73LI0550                   | LA130URD73TTI0550                    |
|           | 630        | 1300          | 84   | 730  | 125/132                          | LA130URD73LI0630                   | LA130URD73TTI0630                    |
|           | 700        | 1300          | 110  | 960  | 135/146                          | LA130URD73LI0700                   | LA130URD73TTI0700                    |
|           | 800        | 1200          | 190  | 1630   | 136                              | LA120URD73LI0800                   | -                                    |
|           | 800        | 1300          | 190  | 1630   | 148                              | -                                  | LA130URD73TTI0800                    |
|           | 900        | 1100          | 250  | 2160   | 150                              | LA110URD73LI0900                   | -                                    |
|           | 900        | 1300          | 250  | 2160   | 170                              | -                                  | LA130URD73TTI0900                    |
|           | 1000       | 1100          | 370  | 2430   | 152/174                          | LA110URD73LI1000                   | LA110URD73TTI1000                    |
|           | 1100       | 1000          | 445  | 2580   | 168/208                          | LA100URD73LI1100                   | LA100URD73TTI1100                    |
|           | 1250       | 1000          | 585  | 3480   | 186/200                          | LA100URD73LI1250                   | LA100URD73TTI1250                    |
|           | 1400       | 900           | 755  | 3880   | 210/228                          | LA090URD73LI1400                   | LA090URD73TTI1400                    |
|           | 1600       | 700           | 1430   | 5630   | 203                              | LA070URD73LI1600                   | LA070URD73TTI1600                    |
|           | 1800       | 660           | 2040   | 7600   | 206                              | LA065URD73LI1800                   | LA065URD73TTI1800                    |

Special Purpose Fuses

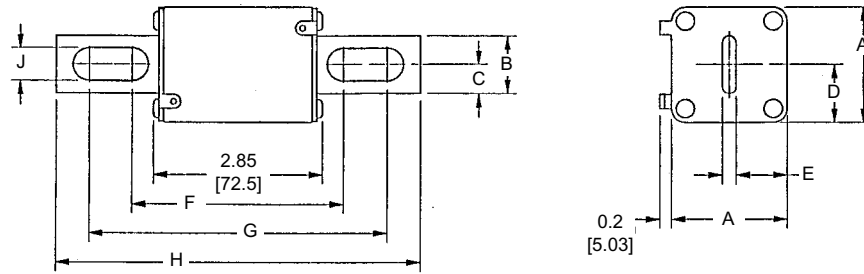
\*\* Watts loss data is published for both blade and tapped style mounting configurations. When two watts loss values are shown this represents tapped/blade values respectively.

Contact Littelfuse for characteristic curves.

# Square Body Semiconductor Fuses

700/1300 VAC ■ Very Fast-Acting ■ 63 – 2500 Amperes

TYPES LI AND LLI



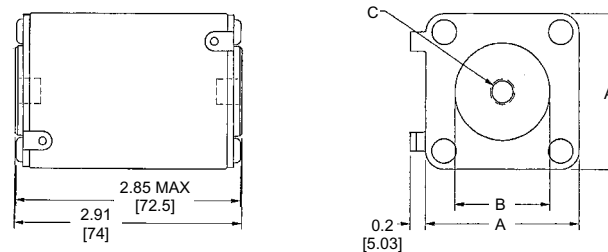
## North American Straight Blade, Types LI and LLI

| CATALOG NUMBER   | DIMENSIONS IN INCHES (mm in parentheses) |              |                |                |                |                |                 |                 |                |
|--|--|--------------|----------------|----------------|----------------|----------------|-----------------|-----------------|----------------|
|  | A  | B            | C              | D              | E              | F              | G               | H               | J              |
| LA130URD70LI (63-315)<br>LA120URD70LI (350)  | 1.57<br>(40)                             | 0.98<br>(25) | 0.49<br>(12.5) | 0.83<br>(21)   | 0.71<br>(18)   | 3.60<br>(91.4) | 5.13<br>(130.4) | 6.00<br>(152.4) | 0.41<br>(10.5) |
| LA130URD71LLI (160-450)<br>LA120URD71LLI (500-550)<br>LA110URD71LLI (630)  | 2.01<br>(51)                             | 0.98<br>(25) | 0.49<br>(12.5) | 1.0<br>(26.5)  | 0.89<br>(22.5) | 3.60<br>(91.4) | 5.13<br>(130.4) | 6.00<br>(152.4) | 0.57<br>(14.6) |
| LA130URD72LI (280-550)<br>LA120URD72LI (800)<br>LA110URD72LI (700-800)   | 2.36<br>(60)                             | 1.26<br>(32) | 0.63<br>(16)   | 1.18<br>(30)   | 1.06<br>(27)   | 3.84<br>(97.6) | 5.2<br>(132.4)  | 6.20<br>(157.4) | 0.57<br>(14.6) |
| LA130URD73LI (315-700)<br>LA120URD73LI (800)<br>LA110URD73LI (900-1000)<br>LA090URD73LI (1400)<br>LA070URD73LI (1600)<br>LA065URD73LI (1800) | 2.93<br>(74.5)                           | 1.57<br>(40) | 0.79<br>(20)   | 1.46<br>(37.2) | 1.35<br>(34.2) | 3.89<br>(98.8) | 5.21<br>(132.4) | 6.20<br>(157.4) | 0.63<br>(15.9) |

Dimensions for reference only.



TYPE TTI



## North American Flat Single Hole, Type TTI

| CATALOG NUMBER  | DIMENSIONS IN INCHES (mm) |                |                 |
|---|---------------------------|----------------|-----------------|
|   | A                         | B              | C               |
| LA130URD70TTI (63-315)<br>LA120URD70TTI (350)   | 1.57<br>(40)              | 1.00<br>(26.4) | 5/16-18x .23 DP |
| LA130URD71TTI (160-450)<br>LA120URD71TTI (550-630)  | 2.01<br>(51)              | 1.19<br>(30.2) | 5/16-18x .36 DP |
| LA130URD72TTI (280-630)<br>LA120URD72TTI (700-800)  | 2.36<br>(60)              | 1.50<br>(38.1) | 3/8-18x .36 DP  |
| LA130URD73TTI (315-900)<br>LA120URD73TTI (1000)<br>LA110URD73TTI (1250)<br>LA090URD73TTI (1400)<br>LA070URD73TTI (1600)<br>LA065URD73TTI (1800) | 2.93<br>(74.5)            | 1.81<br>(46)   | 1/2-18x.36 DP   |

Dimensions for reference only.