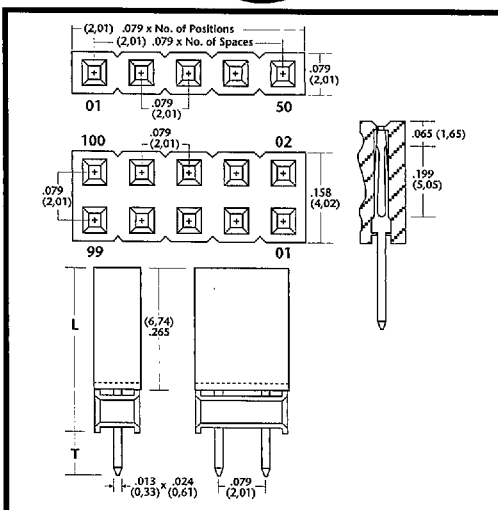
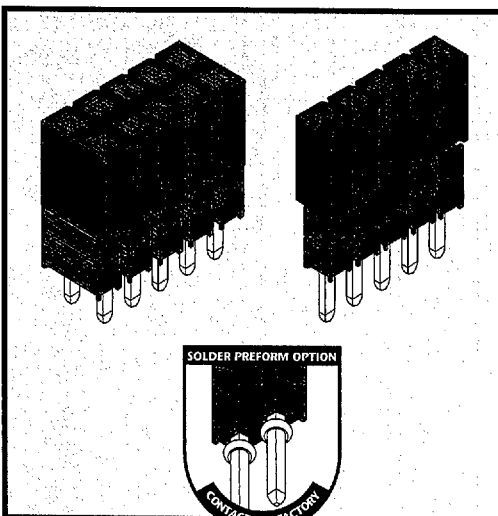




Mates with: TSHS, TSHR, TSHC, BSTS, BSTC, TSHCR, TSHSM, BSTCM



The diagram shows a cross-section of a board with a thickness of 1/2 inch. It illustrates the relationship between the Insertion Depth (the distance the fastener is driven into the board) and the Overall Board Space (the total length of the board). The board is shown with a central section and two end sections. The Insertion Depth is indicated by a dimension line at the top, and the Overall Board Space is indicated by a dimension line at the bottom.

BSSH Socket plugged into Terminal Header

Product cut to specific sizes is noncancellable/nonreturnable.
Parts are subject to change without notice.

EXAMPLE: To elevate the board .442" with a .131" tail with a high temperature material, a 40 position, single row, tin plated part, order a **HBSSH-240-S-12-T**.

	STANDARD	HIGH TEMPERATURE
Insulator	Black, glass filled, polyester	High temperature thermoplastic
Terminal	Phosphor Bronze	Phosphor Bronze
Insulation Resistance	5,000M Ω minimum	5,000M Ω minimum
Flammability	UL 94V-O	UL 94V-O
Temperature Range	-65°C to +125°C	-65°C to +250°C
Current Rating	1 ampere	1 ampere
Plating	All Plating Options over 50 μ in Ni	All Plating Options over 50 μ in Ni



Delivery On Time Every Time...Or The Order's Free!

D 24F ■ 9019296 0000049 677

phone: 812-944-7244 • Facsimile: 812-944-7268 • Email: mle@iglou.com

49

2 mm

www.DataSheet4U.com