

Tape and Reel Standards

| Package | Available Packaging | | | |
|-------------|---------------------|------------------|----------------|----------------|
| | 10'' tape & reel | 13'' tape & reel | Ammo Pack #1 | Ammo Pack #2 |
| | Quantity / Reel | Quantity / Reel | Quantity / Box | Quantity / Box |
| SOD57 | 5.000 | | 5.000 | |
| SOD64 | 2.500 | | 2.500 | |
| DO204AP(G1) | | 4.500 | | 3.000 |
| G3 | | 1.600 | | 1.000 |
| G4 | | 2.000 | | 2.000 |

Taping Specifications SOD57 and SOD64 Package

| Description | Symbol | Specification (mm) |
|---------------------------|---|--------------------|
| Component Pitch | A | 5.0 ± 0.5 |
| Inside Tape Spacing | B | 52 + 2 mm - 1 mm |
| Lead to Lead Eccentricity | ID1-D2I | 1.4 max |
| Lead Extension | K | 0 |
| Lead Bending | M | 1.2 max |
| Cumulative Pitch | P | 2.0 per 10 pitch |
| Exposed Adhesive | S | 0.8 max |
| Tape Width | T | 6.0 ± 0.4 |
| Tape Leader | Beginning and end of reel or ammo pack. | |
| Empty Spaces | Consecutive missing components not allowed | |
| Polarity Marking | All polarized components shall be oriented in the same direction. The cathode tape shall be colored, and anode tape shall be white or light beige. | |

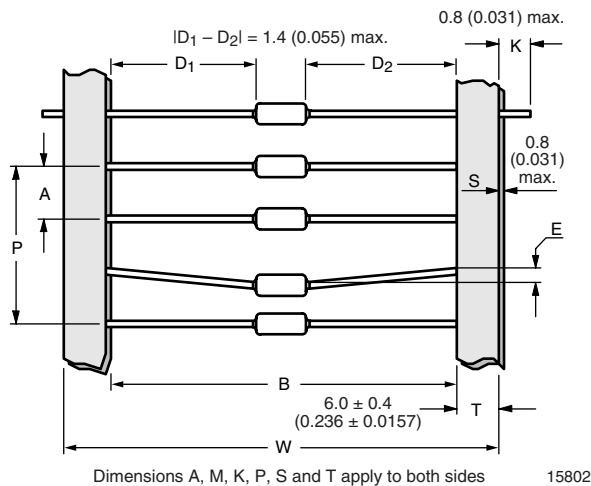
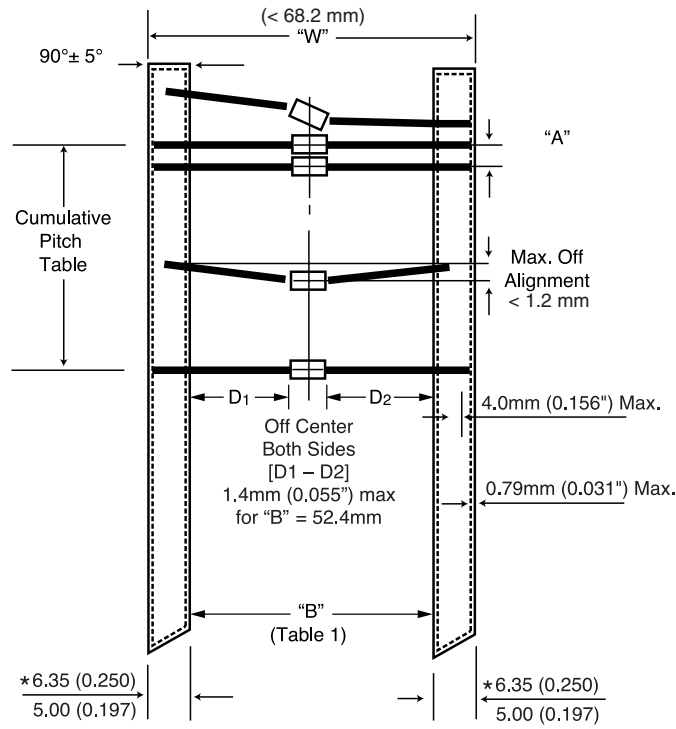


Figure 1.

Taping Specification DO204AP(G1), G3 and G4 Packages

| Package | Component Spacing "A" (Lead to Lead) | Inside Tape Spacing "B" | Cumulative Pitch Tolerance |
|-------------|--------------------------------------|---|--|
| DO204AP(G1) | 5.0 mm + 0.5 mm (0.197" ± 0.020") | 52.4 mm + 1.5 mm / - 0.4 mm (2.062" + 0.059" / - 0.016") | Not to Exceed 1.5 mm (0.059") over 6 Consecutive Components |
| G3, G4 | 10 mm + 0.5 mm (0.394" ± 0.020") | 52.4 mm + 1.5 mm / - 0.4 mm (2.062" + 0.059" / - 0.016") | |



*These are mounted values and have a $\pm 0.40 \text{ mm}$ (0.0157") tolerance range at each value

16959

Figure 2.

10" Reel Specification (SOD57 and SOD64 Packages)

| Description | Symbol | Reel Size 10" |
|----------------------------|--------|-----------------|
| Arbor Hole Diameter | D_0 | 30 ± 1 mm |
| Reel Diameter | D_2 | 250 ± 2 mm |
| Drive Hole Diameter | D_3 | 10 ± 1 mm |
| Reel Width | W_1 | 68 ± 1 mm |
| Drive / Arbor Hole Spacing | W_2 | 27.5 ± 1 mm |
| Core Material | | Plastic |
| Reel Material | | Plastic |

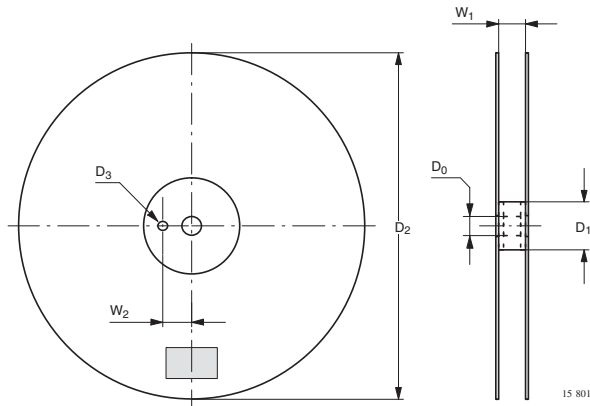


Figure 3.

13" Reel Specification (DO204AP(G1), G3 and G4 Packages)

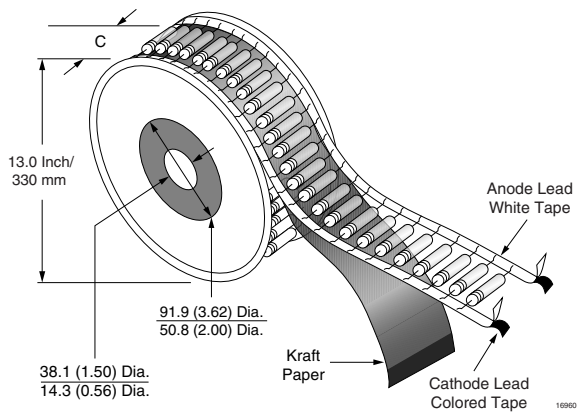


Figure 4.

Ammopack #1 Specification (SOD57 and SOD64 Packages) (Figure 5.)

| Description | Symbol | Specification | |
|-------------|--------|---------------|-------------|
| | | Inches | Millimeters |
| Length | A | 10.25 ± 0.2 | 260 ± 5.0 |
| Width | B | 2.75 ± 0.2 | 70 ± 5.0 |
| Height | C | 5.75 ± 0.65 | 146 ± 16.0 |

Material: corrugated board (neutral)

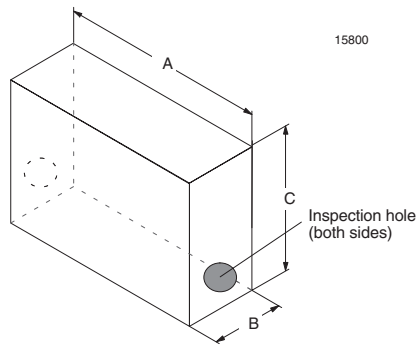
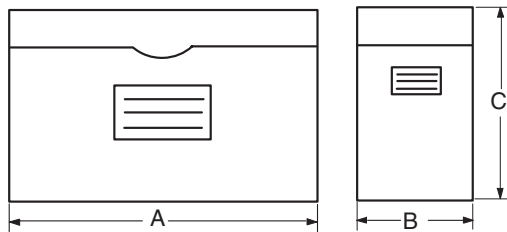


Figure 5.

Ammopack #2 Specification (DO204AP(G1), G3 and G4 Packages) (Figure 6.)

| Dimension "A" | Dimension "B" | Dimension "C" |
|-------------------|------------------|-------------------|
| 10.0" (255 mm) | 3.15" (80 mm) | 4.53" (115 mm) |



16956

Figure 6.

Preformed Leads (SOD64 Packages)

Some types of automatic insertion machines have problems in bending the relatively thick leads of SOD64 Sinterglass Diodes. To overcome this, our diodes can be ordered with preformed leads as follows. Preformed Sinterglass Diodes are shipped in bulk.

SUFFIX RA

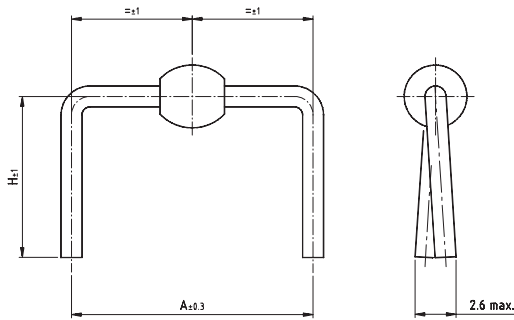


Figure 7.

SUFFIX RAP

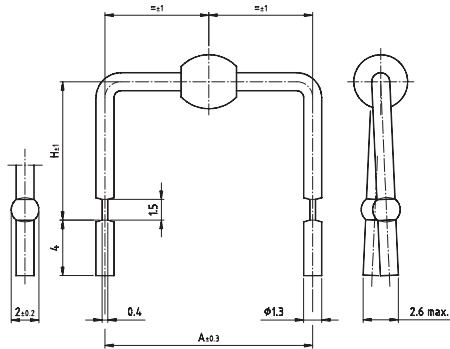


Figure 8.

SUFFIX RAS

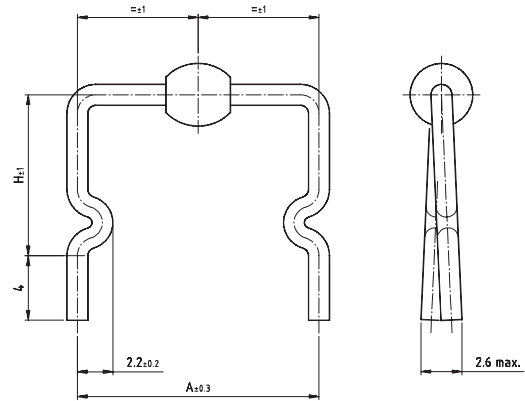


Figure 9.

Common bending version:

| Suffix | | | A (mm) | H (mm) |
|-------------|--------------|--------------|--------|--------|
| RA 15/10 | RAS 15/10 | RAP 15/10 | 15 | 10 |
| RA 17.5/ 10 | RAS 17.5/ 10 | RAP 17.5/ 10 | 17.5 | 10 |

Other bending versions are available on request.