

# PAW-1027

# 35-550 MHz.

# 38 dB.

# CATV Ultra-linear Amplifier

# tyco

# Electronics

# M/A-COM

## Features: (typical values)

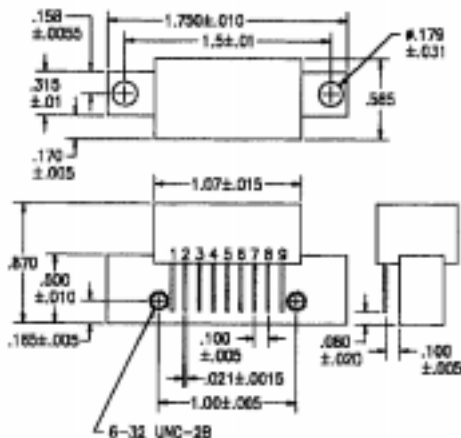
- Ultra High Linearity
- Low Noise Figure
- Rugged Construction
- Operation over a wide voltage range



## Electrical Specifications @30°C (50 ohms system)

Parameter	Typical Conditions	Min. Value	Max. Value	Units
Frequency Range		35	550	MHz.
Power Gain 35/550	f=35 MHz.	37/38	39.5/40	dB.
Gain Flatness (peak to valley)	f=40 to 550 MHz.		.6	dB.
Input/Output Return Loss	f=40 to 550 MHz.	18		dB.
Composite Triple Beat (CTB)	60 channels flat Vo=46dBmV.		-59	dB.
Cross Modulation (XMOD)	60 channels flat Vo=46dBmV.		-59	dB.
Second Order IMD	2 tone Vout = +46 dBmV, F1=50, F2=500		-64	dB.
Noise Figure	@ f= 550 MHz.		5.0	dB.
Total Current	@ Voltage of +24v.		340	mA.

## Outline Drawings



## Maximum Ratings

- Storage Temperature ..... -40°C to +100°C
- DC Voltage ..... +28 volts
- RF Input voltage ..... +14 dBm.
- Operating Base Temperature ..... +100°C

## Pin Configuration

Pin #	Description
1	Input
2,3,7,8	Ground
5	+V
4,6	not used
9	Output