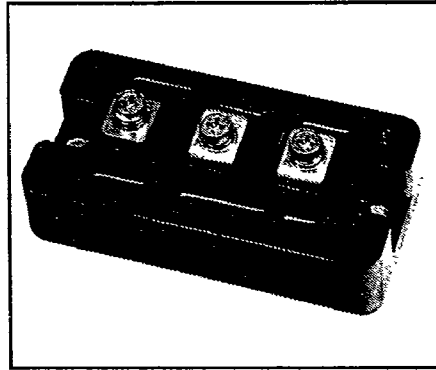
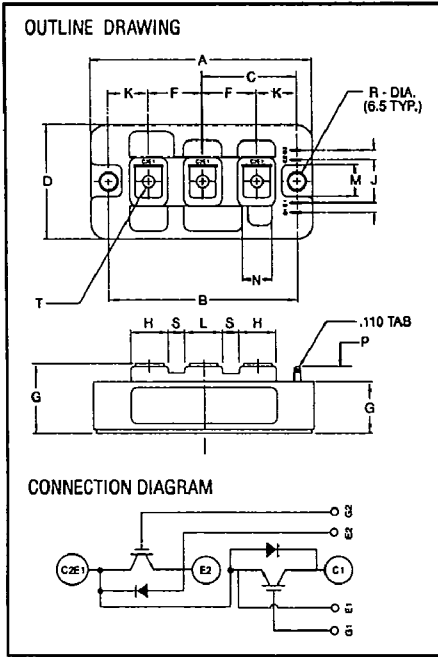


Powerex, Inc., Hillis Street, Youngwood, Pennsylvania 15697 (412) 925-7272
 Powerex, Europe, S.A. 428 Avenue G. Durand, BP107, 72003 Le Mans, France (43) 41.14.14

Dual IGBTMOD™ Power Module

150 Amperes/600 Volts



ID226015
Dual IGBTMOD™ Power Module
150 Amperes/600 Volts

ID226015 Outline Drawing

Dimension	Inches	Millimeters
A	3.70	94
B	3.150±.010	80±0.25
C	1.57	40
D	1.89	48
E	1.18 Max.	30 Max.
F	.90	23
G	.85	21.2
H	.63	16
J	.71	18
K	.67	17
L	.63	16
M	.51	13
N	.47	12
P	.3	7.5
Q	.16	4
R	256 Dia.	Dia. 6.5
S	.28	7
T	M5 Metric	M5

Description

Powerex IGBTMOD™ Modules are designed for use in switching applications. Each module consists of two IGBT Transistors in a half-bridge configuration, with each transistor having a reverse-connected super-fast recovery free wheel diode. All components and interconnects are isolated from the heat sinking baseplate, offering simplified system assembly and thermal management.

Features:

- Low Drive Power
- Low $V_{CE(sat)}$
- Discrete Super-Fast Recovery (150ns) Free Wheel Diode
- High Frequency Operation (15-20kHz)
- Isolated Base Plate for Easy Heat Sinking

Applications:

- AC Motor Control
- Motion/Servo Control
- UPS
- Welding Power Supplies
- Laser Power Supplies

Ordering Information

Example: Select the complete eight digit part module number you desire from the table below -i.e. ID226015 is a 600V (V_{CES}), 150 Ampere Dual IGBTMOD™ Power Module.

Type	V_{CES} Volts (x10)	Current Rating Amperes (x10)
ID22	60	15



Powerex, Inc., Hillis Street, Youngwood, Pennsylvania 15697 (412) 925-7272
 Powerex, Europe, S.A. 428 Avenue G. Durand, BP107, 72003 Le Mans, France (43) 41.14.14

ID226015
 Dual IGBTMOD™ Power Module
 150 Amperes/600Volts

Absolute Maximum Ratings, $T_j = 25^\circ\text{C}$ unless otherwise specified

Ratings	Symbol	ID226015	Units
Junction Temperature	T_j	-40 to 150	$^\circ\text{C}$
Storage Temperature	T_{stg}	-40 to 125	$^\circ\text{C}$
Collector-Emitter Voltage (G-E SHORT)	V_{CES}	600	Volts
Gate-Emitter Voltage	V_{GES}	± 20	Volts
Collector Current	I_C	150	Amperes
Peak Collector Current	I_{CM}	300*	Amperes
Diode Forward Current	I_{FM}	150	Amperes
Diode Forward Surge Current	I_{FM}	300*	Amperes
Power Dissipation	P_d	600	Watts
Max. Mounting Torque M5 Terminal Screws	—	17	in.-lb.
Max. Mounting Torque M6 Mounting Screws	—	26	in.-lb.
Module Weight (Typical)	—	270	Grams
V isolation	V_{RMS}	2500	Volts

* Pulse width and repetition rate should be such that device junction temperature does not exceed the device rating.

Static Electrical Characteristics, $T_j = 25^\circ\text{C}$ unless otherwise specified

Characteristics	Symbol	Test Conditions	Min.	Typ.	Max.	Units
Collector-Cutoff Current	I_{CES}	$V_{CE}=V_{CES}, V_{GE}=0V$	—	—	1.0	mA
Gate Leakage Current	I_{GES}	$V_{GE}=V_{GES}, V_{CE}=0V$	—	—	0.5	μA
Gate-Emitter Threshold Voltage	$V_{GE(th)}$	$I_C=15\text{mA}, V_{CE}=10V$	3.0	4.0	6.0	Volts
Collector-Emitter Saturation Voltage	$V_{CE(sat)}$	$I_C=150A, V_{GE}=15V$	—	3.0	5.0**	Volts
		$I_C=150A, V_{GE}=15V, T_j=150^\circ\text{C}$	—	3.2	**	Volts
Total Gate Charge	Q_G	$V_{CC}=300V, I_C=150A, V_{GS}=15V$	—	540	—	nC
Diode Forward Voltage	V_{FM}	$I_C=-150A, V_{GS}=0V$	—	—	2.5	Volts

** Pulse width and repetition rate should be such that device junction temperature rise is negligible

Dynamic Electrical Characteristics, $T_j = 25^\circ\text{C}$ unless otherwise specified

Characteristics	Symbol	Test Conditions	Min.	Typ.	Max.	Units
Input Capacitance	C_{ies}		—	—	17000	pF
Output Capacitance	C_{oes}	$V_{GE}=0V, V_{CE}=10V, f=1\text{MHz}$	—	—	4000	pF
Reverse Transfer Capacitance	C_{ros}		—	—	400	pF
Resistive	Turn-on Delay Time	$V_{CC}=300V, I_C=150A,$	—	—	250	ns
	Rise Time					
Load	Turn-off Delay Time	$V_{GE1}=V_{GE2}=15V, R_G=17\Omega$	—	—	600	ns
	Fall Time					
Diode Reverse Recovery Time	t_{rr}	$I_E=150A, di_E/dt=-300A/\mu\text{s}$	—	—	200	ns
Diode Reverse Recovery Charge	Q_{rr}	$I_E=150A, di_E/dt=-300A/\mu\text{s}$	—	2.0	—	μC

Thermal and Mechanical Characteristics, $T_j = 25^\circ\text{C}$ unless otherwise specified

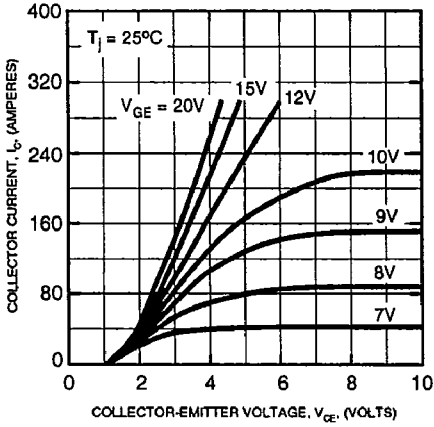
Characteristics	Symbol	Test Conditions	Min.	Typ.	Max.	Units
Thermal Resistance, Junction to Case	$R_{th(j-c)}$	Per IGBT	—	—	0.21	$^\circ\text{C/W}$
Thermal Resistance, Junction to Case	$R_{th(j-c)}$	Per Free Wheel Diode	—	—	0.47	$^\circ\text{C/W}$
Contact Thermal Resistance	$R_{th(c-t)}$	Per Half Module	—	—	0.13	$^\circ\text{C/W}$



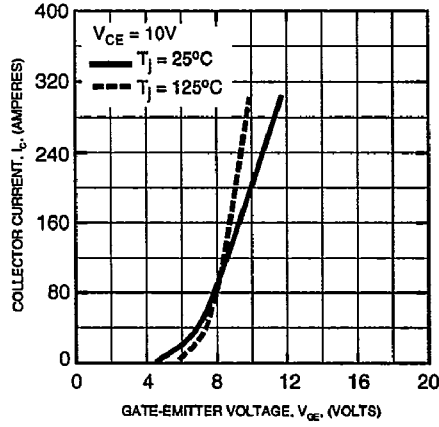
Powerex, Inc., Hillis Street, Youngwood, Pennsylvania 15697 (412) 925-7272
 Powerex, Europe, S.A. 428 Avenue G. Durand, BP107, 72003 Le Mans, France (43) 41.14.14

ID226015
 Dual IGBTMOD™ Power Module
 150 Amperes/600 Volts

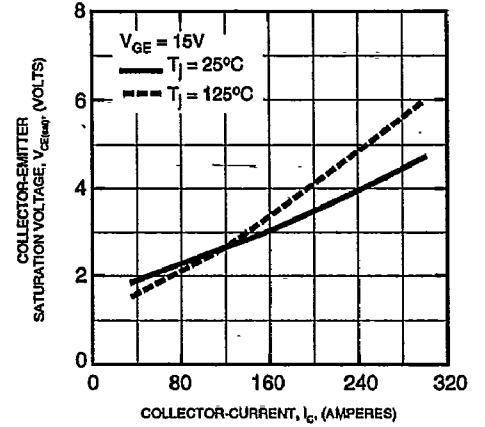
OUTPUT CHARACTERISTICS (TYPICAL)



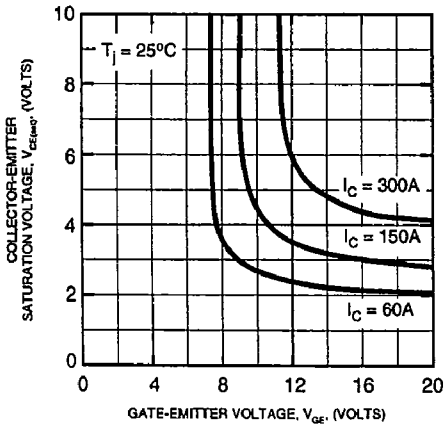
TRANSFER CHARACTERISTICS (TYPICAL)



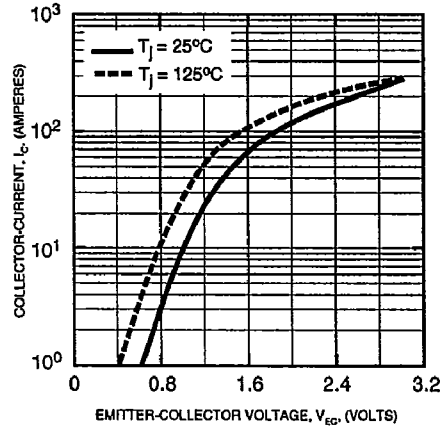
COLLECTOR-EMITTER SATURATION VOLTAGE CHARACTERISTICS (TYPICAL)



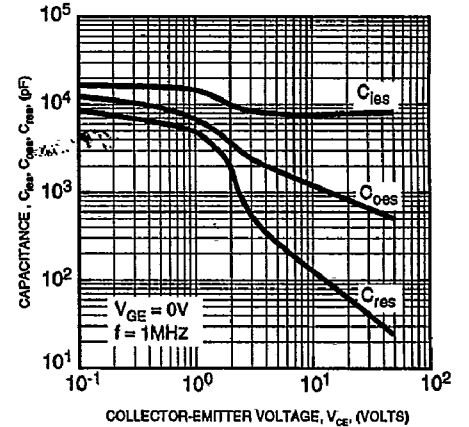
COLLECTOR-EMITTER SATURATION VOLTAGE CHARACTERISTICS (TYPICAL)



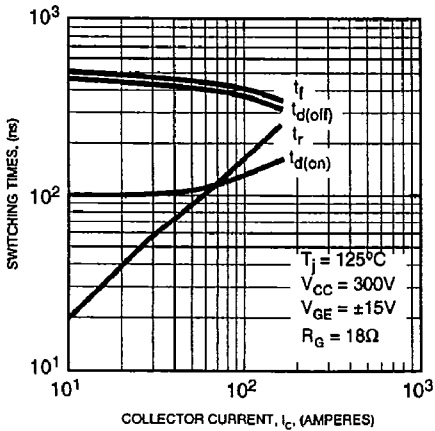
FREE-WHEEL DIODE FORWARD CHARACTERISTICS (TYPICAL)



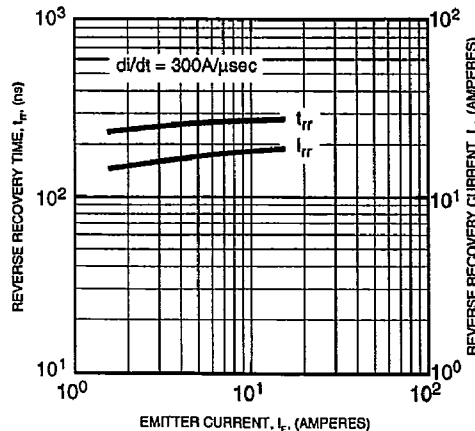
CAPACITANCE VS. V_{CE} (TYPICAL)



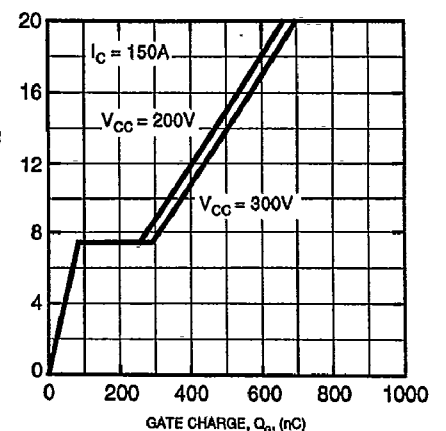
HALF-BRIDGE SWITCHING CHARACTERISTICS (TYPICAL)



REVERSE RECOVERY CHARACTERISTICS (TYPICAL)



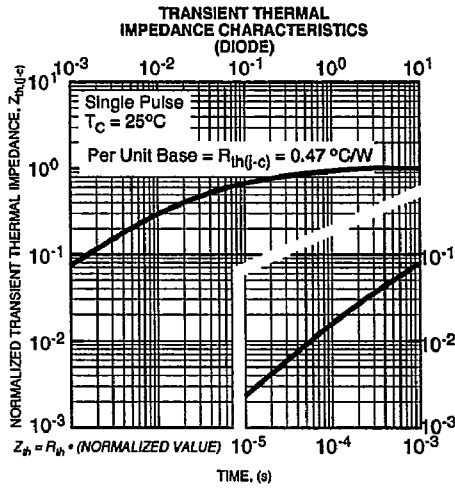
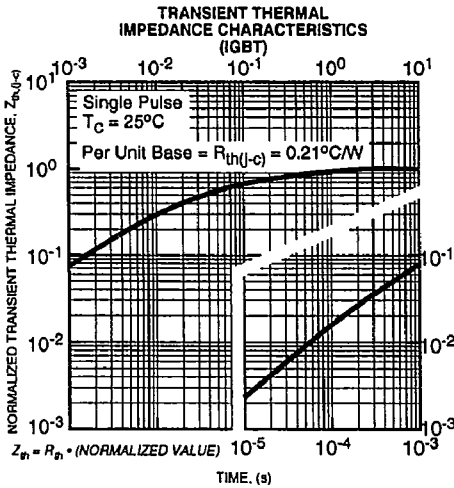
GATE CHARGE, V_{GE}



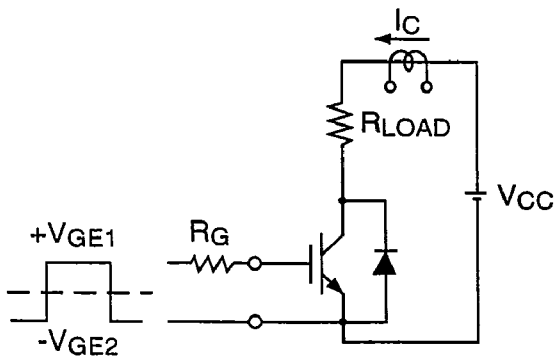
ID226015

Dual IGBTMOD™ Power Module

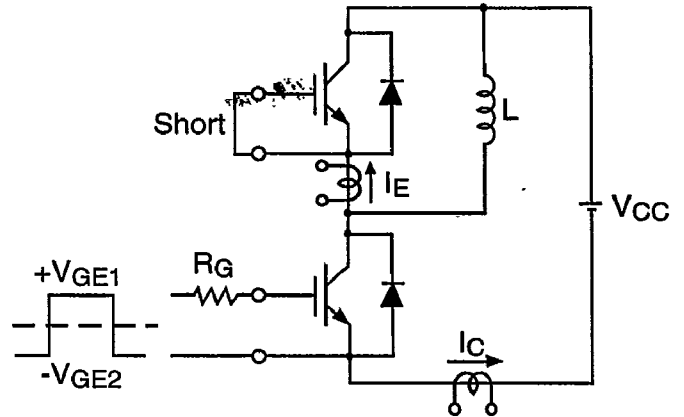
150 Amperes/600Volts



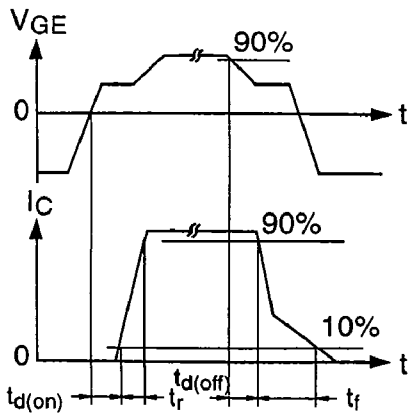
SWITCHING TIME TEST CIRCUITS & WAVEFORMS



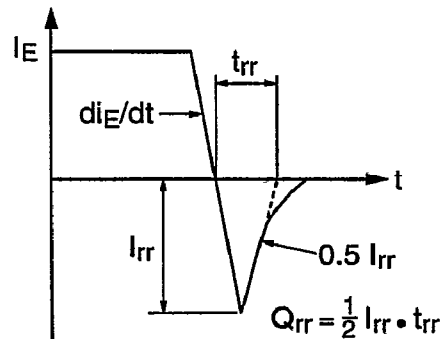
Resistance Load Switching Test Circuit



Half-Bridge Switching Test Circuit



Switching Time Test Waveforms



t_{rr} , Q_{rr} Waveforms