

TOKENRING NETWORKING COMPONENTS

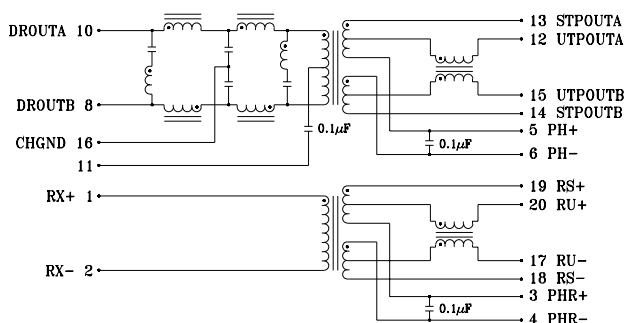
- Designed for use with Texas Instruments C380C30/C60 token ring transceivers
- Complies with IEEE 802.5 standards, including low cutoff frequency
- 2000 Vrms isolation
- Through-hole or surface mount packaging available
- Supports STP 150 ohm or UTP 100 ohm cable

ELECTRICALS AT 25°C

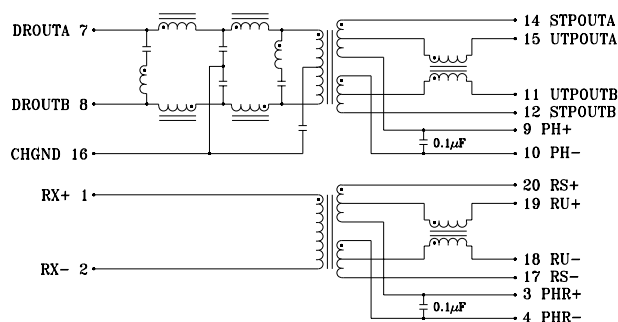
| Part No. | Return Loss (dB) Min | | Insertion Loss (dB) Max | | | | Common to Common Mode Rej (dB) Min | | | Crosstalk (dB) Min | | |
|--------------|----------------------|----------|-------------------------|------|-------|-------|------------------------------------|-------|--------|--------------------|-------|-------|
| | 1-17MHz | 17-25MHz | 4MHz | 8MHz | 16MHz | 24MHz | 5MHz | 20MHz | 200MHz | 8MHz | 16MHz | 24MHz |
| 0556-5338-00 | -12 | -10 | -0.5 | -0.8 | -1.1 | -1.9 | -40 | -40 | -20 | -55 | -50 | -45 |
| S556-5988-00 | -16 | -9 | -0.5 | -0.8 | -1.1 | -1.9 | -35 | -35 | -20 | -55 | -50 | -45 |

SCHEMATICS

0556-5338-00

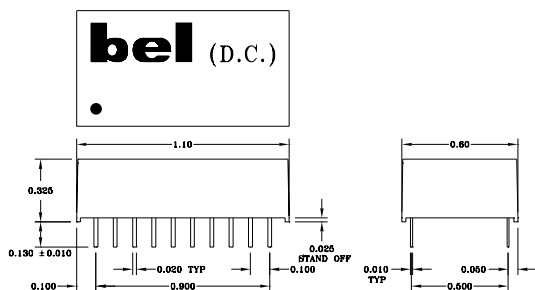


S556-5988-00

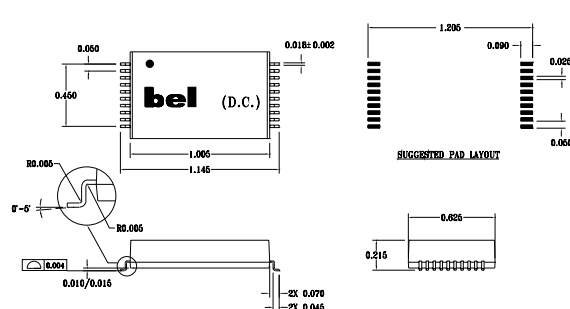


MECHANICALS

0556-5338-00



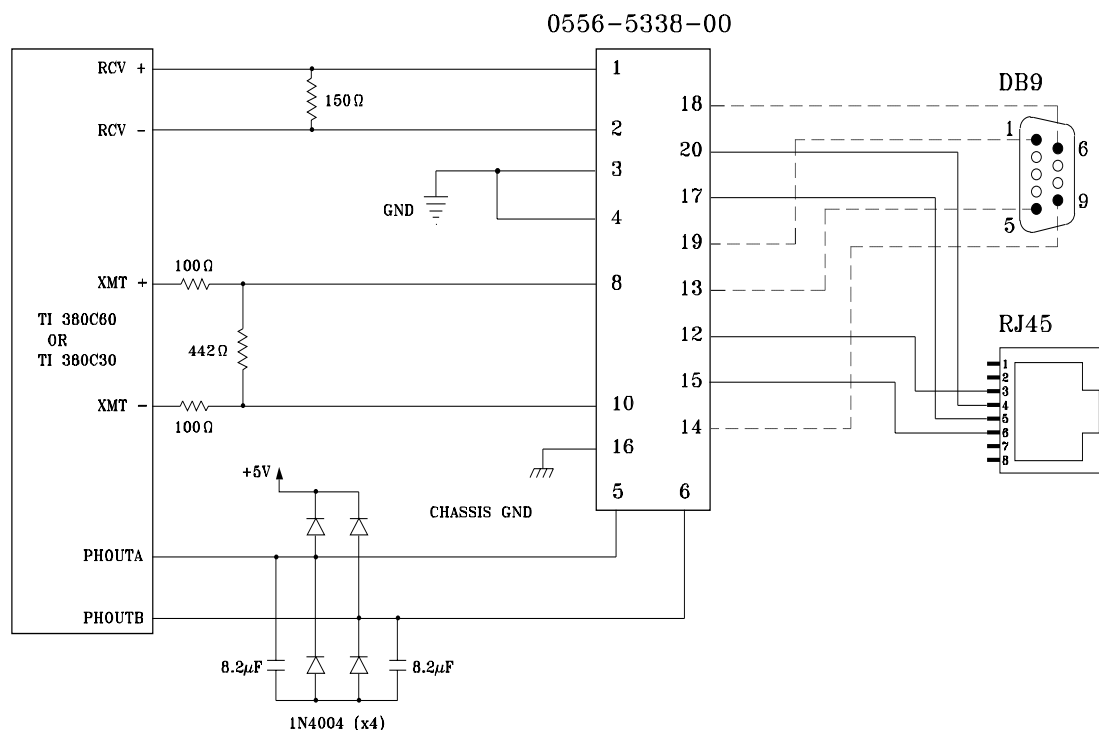
S556-5988-00



Specifications subject to change without notice.

TOKEN RING NETWORKING COMPONENTS

APPLICATION CIRCUIT



APPLICATION NOTES

- These Bel token ring networking components have been developed for use with the Texas Instruments C30 integrated comm processor and transceiver and C60 transceiver only. Both Bel modules provide signal shaping and high voltage isolation, impedance matching, and EMI and noise suppression for both transmit and receive channels. Both modules can be used in either 150 ohm STP or 100 ohm UTP media cable environments.
- Suppression of board induced noise can be achieved with precision layout instructions, along with careful consideration of the selection and placement of discrete components for the interface circuit.
- Do not connect both UTP and STP simultaneously. Only one media connection can be supported at any one time.
- Additional common mode chokes are available for further suppress unwanted signals.

Corporate Office

Bel Fuse Inc.

198 Van Vorst Street, Jersey City, NJ 07302-4496
Tel: 201-432-0463
Fax: 201-432-9542
E-Mail: BelFuse@belfuse.com
Internet: <http://www.belfuse.com>

Far East Office

Bel Fuse Ltd.

8F/8 Luk Hop Street
San Po Kong
Kowloon, Hong Kong
Tel: 852-2328-5515
Fax: 852-2352-3706

European Office

Bel Fuse Europe Ltd.

Preston Technology Management Centre
Marsh Lane, Preston PR1 8UD
Lancashire, U.K.
Tel: 44-1772-556601
Fax: 44-1772-888366