

C&K RBP12 Series 1-6 Pole Miniature Rotary Switches



Features/Benefits

- Rotary switch for low current
- Shaft perpendicular to PCB
- Index mechanism included in thickness of switch
- Several actuation modes
- Low profile

Typical Applications

- Medical
- Instrumentation
- Appliances

Mechanical Data

Max. number of banks	1
Operating torque	2.5 Ncm ± 25% (1 pole)
Stop strength	> 40 Ncm
End stop	With/without or mobile
Contact material	Silver, Gold
Insulating material	Thermoplastic

NOTE: For the latest information regarding RoHS compliance, please go to: www.ittcannon.com/rohs.

NOTE: Specifications and materials listed above are for switches with standard options. For information specific and custom switches, consult Customer Service Center.

Electrical Data

	Silver (S)	Gold (G)
Switching mode	MBB-BBM Make Before Break, Break Before Make	MBB-BBM
Max. switching power	5 VA (resistive)	0.5 VA (resistive)
Max. switching current	130 mA	20 mA
Max. carrying current	3 A	3 A
Contact resistance	< 15 m ohms	< 25 m ohms
Dielectric strength	between contacts 1000 V or contacts and ground 1000 V	1000 V 1000 V
Nominal voltage	150 V rms	150 V rms
Number of operations	15,000	20,000
Insulation resistance between contacts and contacts and frame (500 Vcc)	> 5 x 10 ⁹ ohms	> 5 x 10 ⁹ ohms

Environmental data

Storage temperature	- 25°C to + 70°C	- 25°C to + 85°C
Salt spray	NA	48 H

Further data

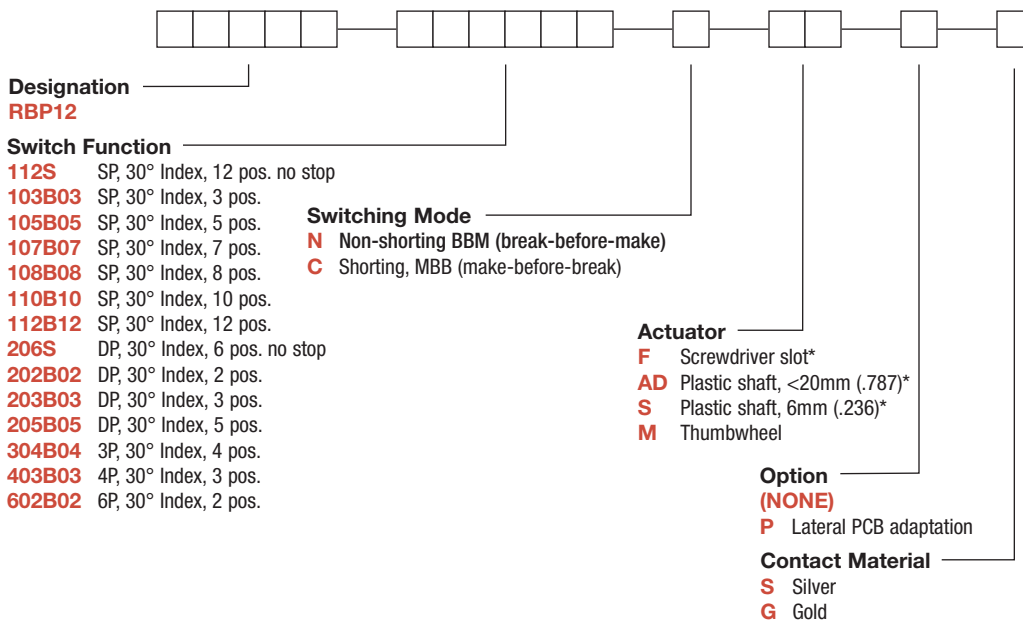
Solderability	Hand: 350°C/5 s	Wave: 260°C/5 s max.
Cleaning	Cleaning of modules prohibited	



Rotary

Build-A-Switch

To order, simply select desired option from each category and place in the appropriate box. Available options are shown and described on pages L-19 thru L-21. For additional options not shown in catalog, consult Customer Service Center.



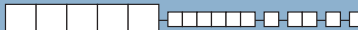
*Option: Metallic shaft available by request



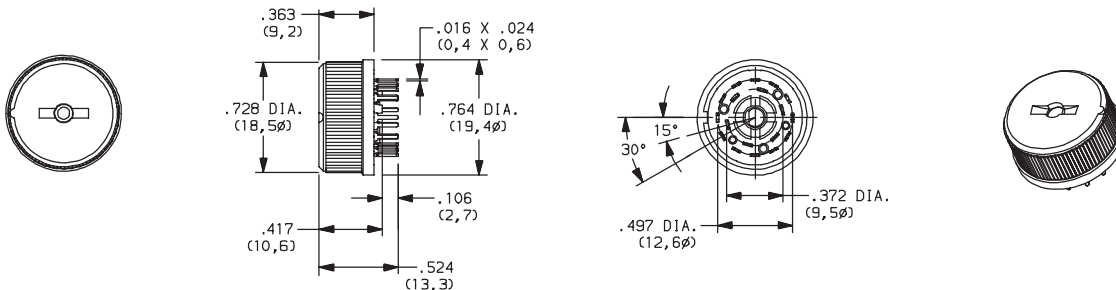
Dimensions are shown: Inch (mm)
Specifications and dimensions subject to change

C&K RBP12 Series 1-6 Pole Miniature Rotary Switches

DESIGNATION



RBP12

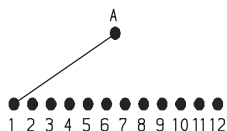


SWITCH FUNCTION

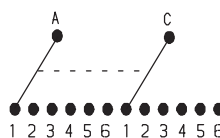


30° INDEXING		
NO. POLES	MODEL NO.	SWITCH FUNCTION
SP	112S	12 Position No Stops
	103B03	3 Positions
	105B05	5 Positions
	107B07	7 Positions
	108B08	8 Positions
	110B10	10 Positions
DP	206S	6 Positions No Stop
	202B02	3 Positions
	203B03	3 Positions
	205B05	5 Positions

SP MODELS SCHEMATIC

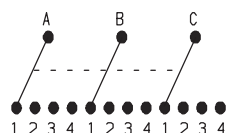


DP MODELS SCHEMATIC

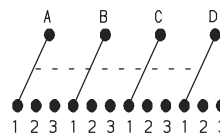


30° INDEXING		
NO. POLES	MODEL NO.	SWITCH FUNCTION
3P	304B04	4 Positions
4P	403B03	3 Positions
6P	602B02	2 Positions

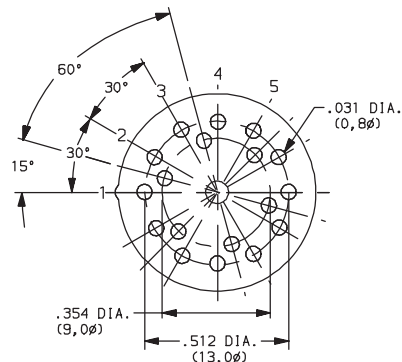
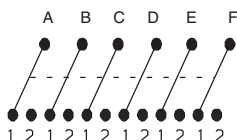
3P MODELS SCHEMATIC



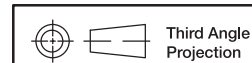
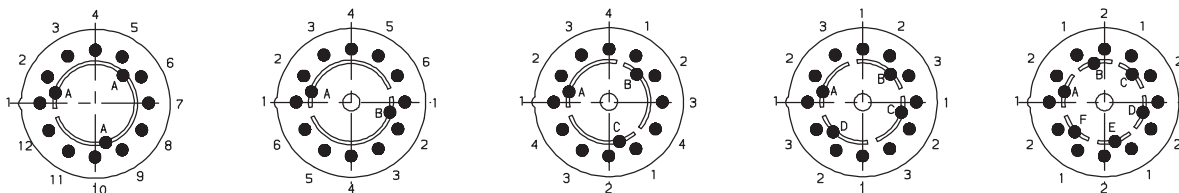
4P MODELS SCHEMATIC



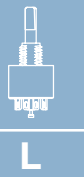
6P MODELS SCHEMATIC



PC LAYOUTS



Dimensions are shown: Inch (mm)
Specifications and dimensions subject to change



Rotary

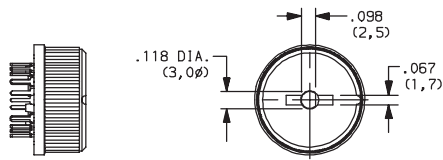
C&K RBP12 Series 1-6 Pole Miniature Rotary Switches

SWITCHING MODE

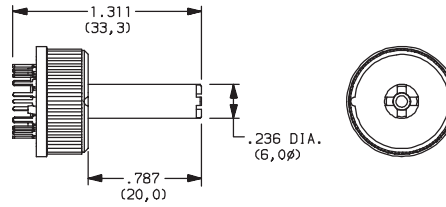
- N** NON-SHORTING, BBM (break-before-make)
- C** SHORTING, MBB (make-before-break)

ACTUATOR

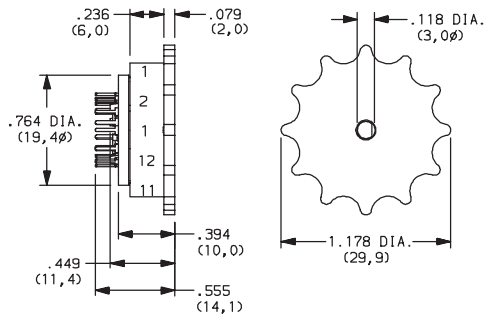
F SCREWDRIVER SLOT



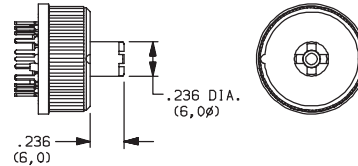
AD PLASTIC SHAFT, <20 mm (.787)



M THUMBWHEEL



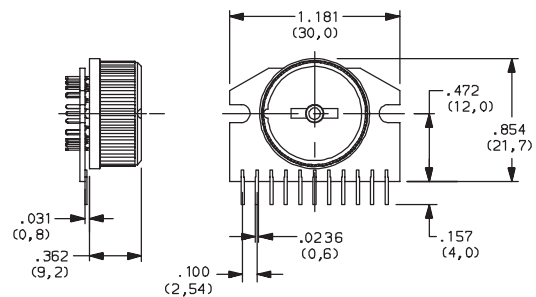
S PLASTIC SHAFT, 6 mm (.236)



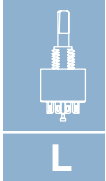
OPTION

(NONE)

P LATERAL PCB ADAPTATION



Dimensions are shown: Inch (mm)
Specifications and dimensions subject to change



Rotary



C&K RBP12 Series 1-6 Pole Miniature Rotary Switches

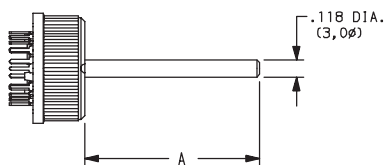
CONTACT MATERIAL

OPTION CODE	RoHS COMPLIANT*	RoHS COMPATIBLE*	CONTACT AND TERMINAL MATERIAL	RATING	
S	YES	YES	SILVER	LOW LEVEL/DRY CIRCUIT	SWITCH: 130 mA, POWER: 5 VA MAXIMUM. CARRY: 3 AMPS
G	YES	YES	GOLD	LOW LEVEL/DRY CIRCUIT OR POWER	SWITCH: 20 mA, POWER: 0.5 VA MAXIMUM. CARRY: 3 AMPS

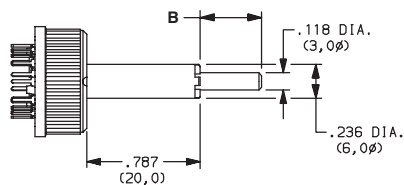
* Note: See Technical Data section of this catalog for RoHS compliant and compatible definition and specifications.

AVAILABLE HARDWARE

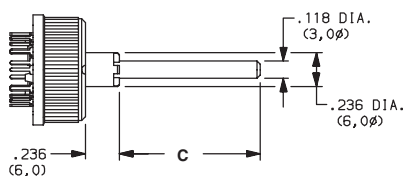
F + FA SHAFT



AD + FA SHAFT

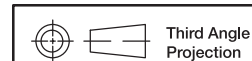


S + FA SHAFT

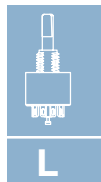


PART NUMBER	"A"
Y460P0067FP	.394 (10,0)
Y460P0060FP	.590 (15,0)
Y460P0090FP	.787 (20,0)
Y460320100P	.984 (25,0)
Y460P0018FP	1.969 (50,0)
Y460P0022FP	2.756 (70,0)

NOTE: FA metallic shaft, consult customer service for available lengths.



Dimensions are shown: Inch (mm)
Specifications and dimensions subject to change



Rotary