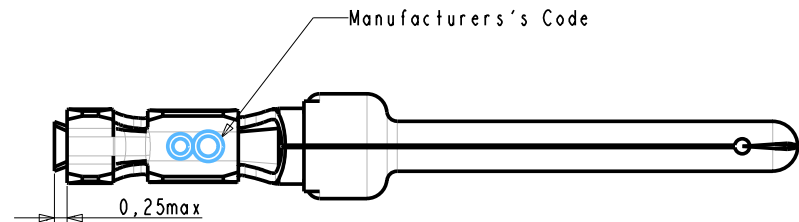


Tous droits strictement réservés. Reproduction ou communication de ces livres interdite sans autorisation écrite du propriétaire. Property of FCI. All rights reserved. Reproduction or communication of these books without written authority from the proprietor. Property of FCI.

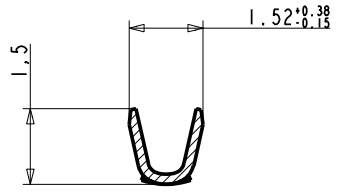
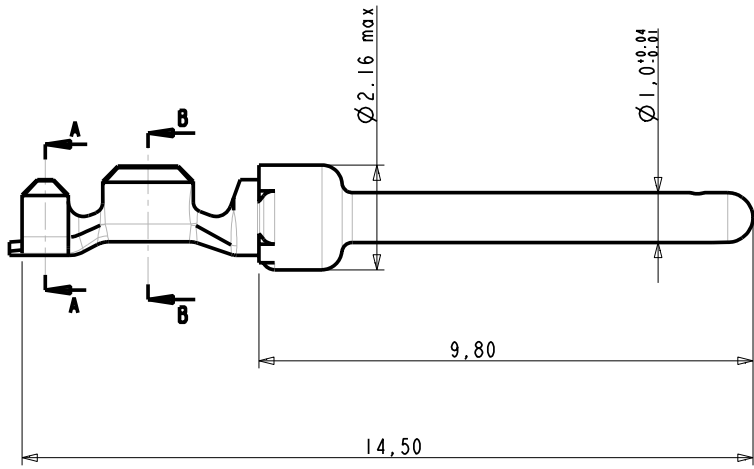
FCI

All rights strictly reserved. Reproduction or issue to third parties in any form without written authority from the proprietor. Property of FCI. Copyright © 2005 FCI

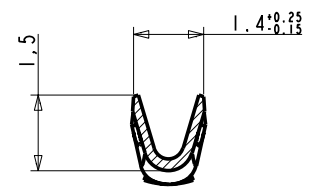


PART NUMBER	Plating
8656350067LF	0.4 μ Au
8656350067	0.4 μ Au
8656350065LF	0.76 μ Au
86563050065	0.76 μ Au
8656350064LF	flash Au
8656350064	flash Au

NOTES:
 1-Material: Pin brass, thickness 0.20
 socket : Phosphor bronze
 2-Finish on contact area: see table
 finish on termination: bright tin lead over nickel
 3-Wire range: 20 to 28 AW
 4-Max outer dia of wire insulator:
 -1.73 mm for contact #20-24
 -1.02 mm for contact #24-28
 5-Current carrying capacity per contact:
 5.Amps max when crimped to #20 AWG
 5 Amps max when crimped to #22 AWG
 3 Amps max when crimped to #24 AWG
 2 Amps max when crimped to #26 AWG
 1 Amps max when crimped to #28 AWG
 6-After 5 insertions into connector,
 contact retention must be 5 pounds axial load min
 7-When contact is crimped to 20 AWG, the insulation
 support crimped height must be 1.78 mm max to ensure
 a proper insertion into housing
 6-Packaging: Reel



SECTION A-A



SECTION B-B

CROSS SECTIONS FOR CT #24-28

NOTE : ROHS INFORMATIONS
 The LF products meet European union directives and other country regulations as described in GS-22-008
 Terminations plating spec : 2um Nickel min + 2um Sn min
 Packaging Spec : see GS-14-930

l/r	ecn no	dr	date
B	LS05-006	MPE	07/07/06
-	-	-	-
-	-	-	-
-	-	-	-
-	-	-	-
-	-	-	-
-	-	-	-
-	-	-	-

www.fciconnect.com		surface	<input checked="" type="checkbox"/>	tolerance	ISO 406	projection	mm
		ISO 1302		ISO 1101			
Dr	-	18/04/03	Product family	-	size	A3	Scale
Eng	-	-	Spec ref	-			5/1
Chr	-	-	Material	SEE NOTES	ECN	-	
Appr	-	-					
Title					CRIMP PIN		Rev.
					#Wire 24-28 Ø1.02		
catalog no					- CUSTOMER COPY		sheet 1 of 1
					C01-8656-1506		B