

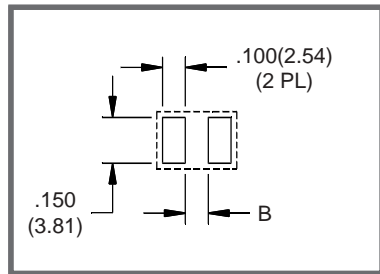
High Voltage Rectifiers - Formed Lead

0.8A - 3.5A • 30ns - 70ns • Hermetic

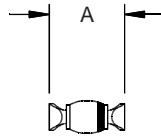
ELECTRICAL CHARACTERISTICS AND MAXIMUM RATINGS												
Part Number	Working Reverse Voltage (V _{rw})	Average Rectified Current (I _o)		Reverse Current @ V _{rw} (I _r)		Forward Voltage (V _f)		1 Cycle Surge Current t _p =8.3ms (I _{fsm})	Repetitive Surge Current (I _{frm})	Reverse Recovery Time (3) (T _{rr})	Thermal Impd. θ _{J-C}	Junction Cap. @50VDC @1kHz (C _j)
		55°C(1)	100°C(2)	25°C	100°C	25°C		25°C	25°C	25°C	25°C	25°C
	Volts	Amps	Amps	µA	µA	Volts	Amps	Amps	Amps	ns	°C/W	pF
Z20FF3LL Z50FF3LL	2000 5000	2.0 0.8	1.2 0.4	1.0 1.0	25 25	6.0 12.5	0.75 0.36	65 22	10 4	30 30	5.0 5.0	20 16
Z20FF5LL Z50FF5LL	2000 5000	2.0 0.8	1.2 0.4	1.0 1.0	25 25	6.0 12.5	0.75 0.36	65 22	10 4	50 50	5.0 5.0	20 16
1N6513LL	2000	3.5	2.4	1.0	25	3.5	2.0	100	15	70	5.0	25
1N6515LL	3000	2.5	1.5	1.0	25	6.0	1.5	60	10	70	5.0	20
1N6517LL	5000	1.5	1.0	1.0	25	8.0	1.0	40	8	70	5.0	16

(1)TC=55°C (2)TC=100°C (3)I_f=0.5A, I_r=1.0A, I_{rr}=0.25A *Op. Temp.= -65°C to +175°C Stg. Temp.= -65°C to +200°C

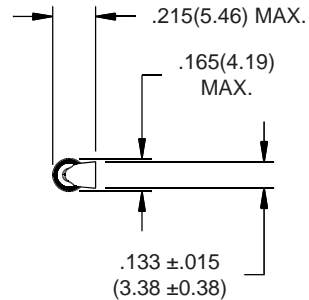
Part	A	B
Z20FF3LL	.350(8.89) MAX.	.220 (5.59)
Z20FF5LL	.320(8.13) MIN.	(5.59)
Z50FF3LL	.390(9.91) MAX.	.260 (6.60)
Z50FF5LL	.350(8.89) MIN.	(6.60)
1N6513LL	.340(8.64) MAX. .320(8.13) MIN.	.210 (5.33)
1N6515LL	.360(9.14) MAX. .340(8.64) MIN.	.230 (5.84)
1N6517LL	.380(9.65) MAX. .350(8.89) MIN.	.250 (6.35)



Markings:
Cathode band.



.022 ±.003
(.56 ±.08)
Dimension uncontrolled
in this area due to
solder fillet.



Dimensions: In. (mm) • All temperatures are ambient unless otherwise noted. • Data subject to change without notice.



VOLTAGE MULTIPLIERS INC.
8711 W. Roosevelt Ave.
Visalia, CA 93291

TEL. 559-651-1402
FAX 559-651-0740

www.voltagemultipliers.com
www.highvoltagepowersupplies.com