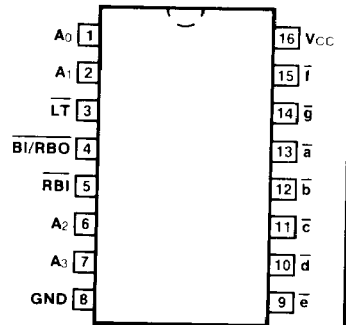


# 54LS/74LS347 ✓ 034690

## BCD TO 7-SEGMENT DECODER/DRIVER

### CONNECTION DIAGRAM PINOUT A

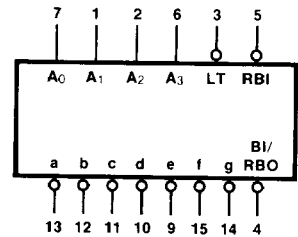


**DESCRIPTION** — The '347 is the same as the '47 except that the Output OFF Voltage,  $V_{OH}$ , is specified as 7.0 V rather than 15 V, with the same  $I_{OH}$  limit of 250  $\mu A$ . For all other information please refer to the '47 data sheet.

**ORDERING CODE:** See Section 9

| PKGS            | PIN OUT | COMMERCIAL GRADE  | MILITARY GRADE  | PKG TYPE |
|-----------------|---------|---|---|----------|
|                 |         | $V_{CC} = +5.0 V \pm 5\%$ ,<br>$T_A = 0^\circ C$ to $+70^\circ C$ | $V_{CC} = +5.0 V \pm 10\%$ ,<br>$T_A = -55^\circ C$ to $+125^\circ C$ |          |
| Plastic DIP (P) | A       | 74LS347PC   |   | 9B       |
| Ceramic DIP (D) | A       | 74LS347DC   | 54LS347DM   | 7B       |
| Flatpak (F)     | A       | 74LS347FC   | 54LS347FM   | 4L       |

### LOGIC SYMBOL



$V_{CC} = \text{Pin } 16$   
GND = Pin 8

**INPUT LOADING/FAN-OUT:** See Section 3 for U.L. definitions

| PIN NAMES                     | DESCRIPTION   | 54/74LS HIGH/LOW         |
|-------------------------------|---|--------------------------|
| $A_0 - A_3$                   | BCD Inputs  | 0.5/0.25                 |
| $\overline{RBI}$              | Ripple Blanking Input (Active LOW)                                    | 0.5/0.25                 |
| $\overline{LT}$               | Lamp Test Input (Active LOW)  | 0.5/0.25                 |
| $\overline{BI/RBO}$           | Blanking Input (Active LOW) or<br>Ripple Blanking Output (Active LOW) | -/0.75<br>1.25/2.0       |
| $\overline{a} - \overline{g}$ | Segment Outputs (Active LOW)  | (1.0)<br>OC*/15<br>(7.5) |

\*OC — Open Collector