

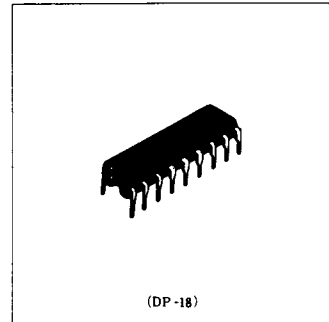
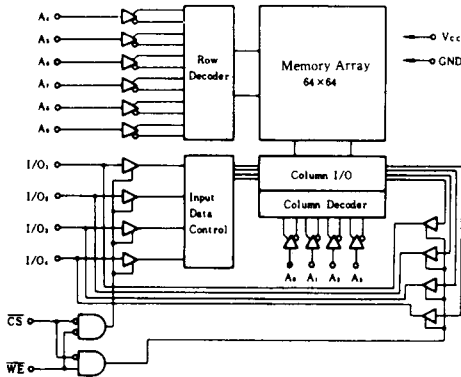
# HM6148HLP Series

1024-word × 4-bit High Speed Static CMOS RAM

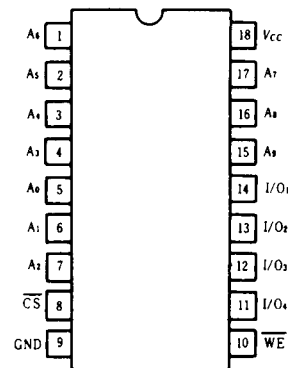
## ■ FEATURES

- Low Power Standby and Low Power Operation;  
Standby: 5μW (typ.), Operation: 175mW (typ.)
- Fast Access Time: 45/55ns (max)
- Capability of Battery Back Up Operation
- Single 5V Supply
- Completely Static RAM: No Clock or Timing Strobe Required
- No Peak Power-On Current
- No Change of  $t_{ACS}$  with Short Deselected Time
- Equal Access and Cycle Time
- Directly TTL Compatible: All Inputs and Outputs
- Three State Output
- Pin-Out Compatible with Intel 2148H

## ■ BLOCK DIAGRAM



## ■ PIN ARRANGEMENT



(Top View)

## ■ ABSOLUTE MAXIMUM RATINGS

Item	Symbol	Ratings	Unit
Terminal Voltage*	$V_T$	-0.5 to +7.0	V
Power Dissipation	$P_T$	1.0	W
Operating Temperature	$T_{op}$	0 to +70	°C
Storage Temperature	$T_{stg}$	-55 to +125	°C
Storage Temperature**	$T_{srt}$	-10 to +85	°C

\* with respect to GND.  $V_{CC} = -3.5V$  (Pulse width = 20ns)

\*\* under bias.

## ■ TRUTH TABLE

CS	WE	Mode	$V_{CC}$ Current	I/O Pin	Reference Cycle
H	X	Not selected	$I_{SB}, I_{SB1}$	High Z	
L	H	Read	$I_{CC}$	Dout	Read Cycle 1, 2
L	L	Write	$I_{CC}$	Din	Write Cycle 1, 2

[www.DataSheet.in](http://www.DataSheet.in)



### RECOMMENDED DC OPERATING CONDITIONS ( $T_a = 0$ to $+70^\circ\text{C}$ )

Item	Symbol	min	typ	max	Unit
Supply Voltage	$V_{CC}$	4.5	5.0	5.5	V
	GND	0	0	0	V
Input Voltage	$V_{IH}$	2.2	—	6.0	V
	$V_{IL}$	-0.5*	—	0.8	V

\* -3.0V (Pulse width 20ns)

### DC AND OPERATING CHARACTERISTICS ( $T_a = 0$ to $+70^\circ\text{C}$ , $V_{CC} = 5\text{V} \pm 10\%$ , $\text{GND} = 0\text{V}$ )

Parameter	Symbol	Test Conditions	min	typ*	max	Unit
Input Leakage Current	$ I_{L1} $	$V_{CC} = \text{max}$ , $V_{in} = \text{GND to } V_{CC}$	—	—	2.0	$\mu\text{A}$
Output Leakage Current	$ I_{L0} $	$\overline{\text{CS}} = V_{IH}$ , $V_{i/o} = \text{GND to } V_{CC}$	—	—	2.0	$\mu\text{A}$
Operating Power Supply Current (1)	$I_{CC}$	$\overline{\text{CS}} = V_{IL}$ , $I_{i/o} = 0\text{mA}$	—	35	80	$\text{mA}$
Operating Power Supply Current (2)	$I_{CC1}$	min. cycle, $\overline{\text{CS}} = V_{IL}$ , $I_{i/o} = 0\text{mA}$	—	50	100	$\text{mA}$
Standby Power Supply Current (1)	$I_{SB}$	$\overline{\text{CS}} = V_{IH}$	—	5	20	$\text{mA}$
Standby Power Supply Current (2)	$I_{SB1}$	$\overline{\text{CS}} \geq V_{CC} - 0.2\text{V}$ , $V_{IH} \leq 0.2\text{V}$ or $V_{IH} \geq V_{CC} - 0.2\text{V}$	—	1	50	$\mu\text{A}$
Output Low Voltage	$V_{OL}$	$I_{OL} = 8\text{mA}$	—	—	0.4	V
Output High Voltage	$V_{OH}$	$I_{OH} = -4.0\text{mA}$	2.4	—	—	V

\* Typical limits are at  $V_{CC} = 5.0\text{V}$ ,  $T_a = +25^\circ\text{C}$  and specified loading.

### CAPACITANCE ( $T_a = 25^\circ\text{C}$ , $f = 1\text{MHz}$ )

Item	Symbol	Test Conditions	typ	max	Unit
Input Capacitance	$C_{in}$	$V_{in} = 0\text{V}$	—	5	pF
Input/Output Capacitance	$C_{i/o}$	$V_{i/o} = 0\text{V}$	—	7	pF

Note: This parameter is sampled and not 100% tested.

### AC CHARACTERISTICS ( $V_{CC} = 5\text{V} \pm 10\%$ , $T_a = 0$ to $+70^\circ\text{C}$ )

#### RISE/FALL TIME

Item	Symbol	min	typ	max	Unit
Input Rise Time	$t_r$	—	5	100	ns
Input Fall Time	$t_f$	—	5	100	ns

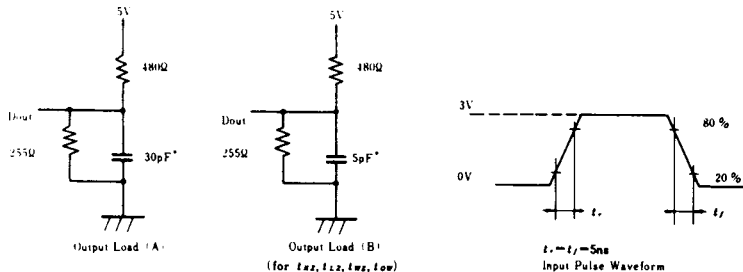
#### AC TEST CONDITIONS

Input pulse levels: GND to 3.0V

Input rise and fall times: 5ns

Input and Output timing reference levels: 1.5V

Output load: See Figure



\* Including scope & jig.

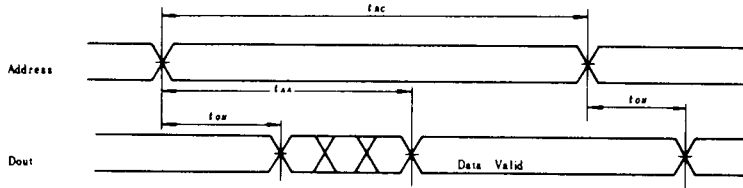
■ AC CHARACTERISTICS ( $T_a=0$  to  $+70^\circ\text{C}$ ,  $V_{cc}=5V\pm 10\%$ , unless otherwise noted.)

● READ CYCLE

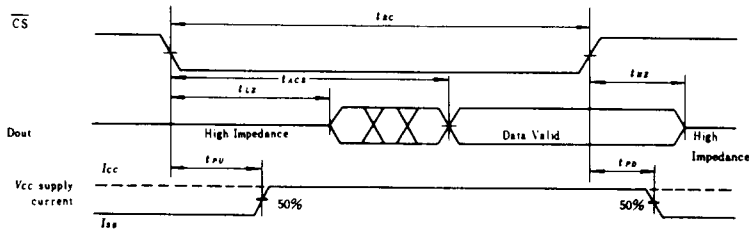
Item	Symbol	HM6148HLP-45		HM6148HLP-55		Unit
		min	max	min	max	
Read Cycle Time	$t_{AC}$	45	—	55	—	ns
Address Access Time	$t_{AA}$	—	45	—	55	ns
Chip Select Access Time	$t_{ACS}$	—	45	—	55	ns
Output Hold from Address Change	$t_{OH}$	5	—	5	—	ns
Chip Selection to Output in Low Z	$t_{LZ}^{\circ}$	10	—	10	—	ns
Chip Deselection to Output in High Z	$t_{HZ}^{\circ}$	0	20	0	20	ns
Chip Selection to Power Up Time	$t_{PU}$	0	—	0	—	ns
Chip Deselection to Power Down Time	$t_{PD}$	—	30	—	30	ns

● Transition is measured  $\pm 500\text{mV}$  from steady state voltage with Load(B). This parameter is sampled and not 100% tested.  
 At any temperature and voltage condition  $t_{LZ}$  max is less than  $t_{LZ}$  min.

● TIMING WAVEFORM OF READ CYCLE NO.1 (1)(2)



● TIMING WAVEFORM OF READ CYCLE NO.2 (1)(3)



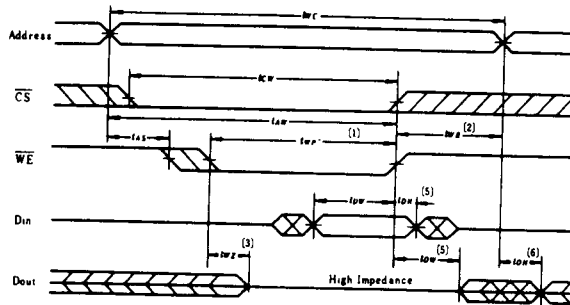
- Notes) 1.  $\overline{WE}$  is High for Read Cycle.  
 2. Device is continuously selected,  $\overline{CS} = V_{IL}$ .  
 3. Address Valid prior to or coincident with  $\overline{CS}$  transition Low.

● WRITE CYCLE

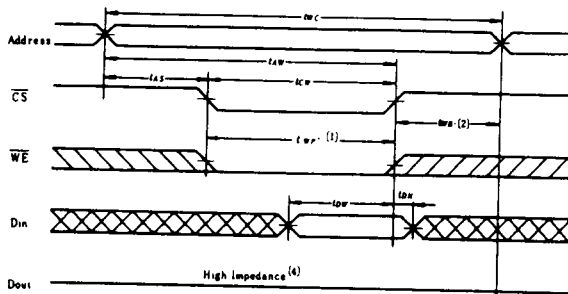
Item	Symbol	HM6148HLP-45		HM6148HLP-55		Unit
		min	max	min	max	
Write Cycle Time	$t_{wc}$	45	—	55	—	ns
Chip Selection to End of Write	$t_{cw}$	40	—	50	—	ns
Address Valid to End of Write	$t_{aw}$	40	—	50	—	ns
Address Setup Time	$t_{as}$	0	—	0	—	ns
Write Pulse Width	$t_{wp}$	35	—	40	—	ns
Write Recovery Time	$t_{wr}$	5	—	5	—	ns
Data Valid to End of Write	$t_{dw}$	20	—	20	—	ns
Data Hold Time	$t_{dh}$	0	—	0	—	ns
Write Enabled to Output in High Z*	$t_{wz}$	0	15	0	20	ns
Output Active from End of Write*	$t_{ow}$	0	—	0	—	ns

\* Transition is measured  $\pm 500$ mV from steady state voltage with Load B.  
This parameter is sampled and not 100% tested.

● TIMING WAVEFORM OF WRITE CYCLE NO.1 ( $\overline{WE}$  Controlled)



● TIMING WAVEFORM OF WRITE CYCLE NO.2 ( $\overline{CS}$  Controlled)



Notes of Timing Waveform of Write :

1. A write occurs during the overlap of a low  $\overline{CS}$  and a low  $\overline{WE}$ . ( $t_{wp}$ )
2.  $t_{aw}$  is measured from the earlier of  $\overline{CS}$  or  $\overline{WE}$  going high to the end of write cycle.
3. During this period, I/O pins are in the output state so that the input signals of opposite phase to the outputs must not be applied.
4. If the  $\overline{CS}$  low transition occurs simultaneously with the  $\overline{WE}$  transition or after the  $\overline{WE}$  transition, the output buffers remain in a high impedance state.
5. If  $\overline{CS}$  is low during this period, I/O pins are in the output state. Then the data input signals of opposite phase to the outputs must not be applied to them.
6. Dout is the same phase of write data of this write cycle.



● LOW  $V_{CC}$  DATA RETENTION CHARACTERISTICS ( $0^{\circ}\text{C} \leq T_a \leq 70^{\circ}\text{C}$ )

Parameter	Symbol	Test Conditions	min	typ	max	Unit
$V_{CC}$ for Data Retention	$V_{DR}$	$\overline{CS} \geq V_{CC} - 0.2\text{V}$ $V_{in} \geq V_{CC} - 0.2\text{V}$ or $0\text{V} \leq V_{in} \leq 0.2\text{V}$	2.0	—	—	V
Data Retention Current	$I_{CCDR}$		—	—	30* 20**	$\mu\text{A}$
Chip Deselect to Data Retention Time	$t_{CDR}$	$0\text{V} \leq V_{in} \leq 0.2\text{V}$	0	—	—	ns
Operation Recovery Time	$t_R$		$t_{RC(1)}$	—	—	ns

Note) 1.  $t_{RC}$ —Read Cycle Time.

- \*  $V_{CC} = 3.0\text{V}$
- \*\*  $V_{CC} = 2.0\text{V}$

● LOW  $V_{CC}$  DATA RETENTION WAVEFORM

