

# Programmable Video Digitizer with Selectable Gain and Clamps

## GENERAL DESCRIPTION

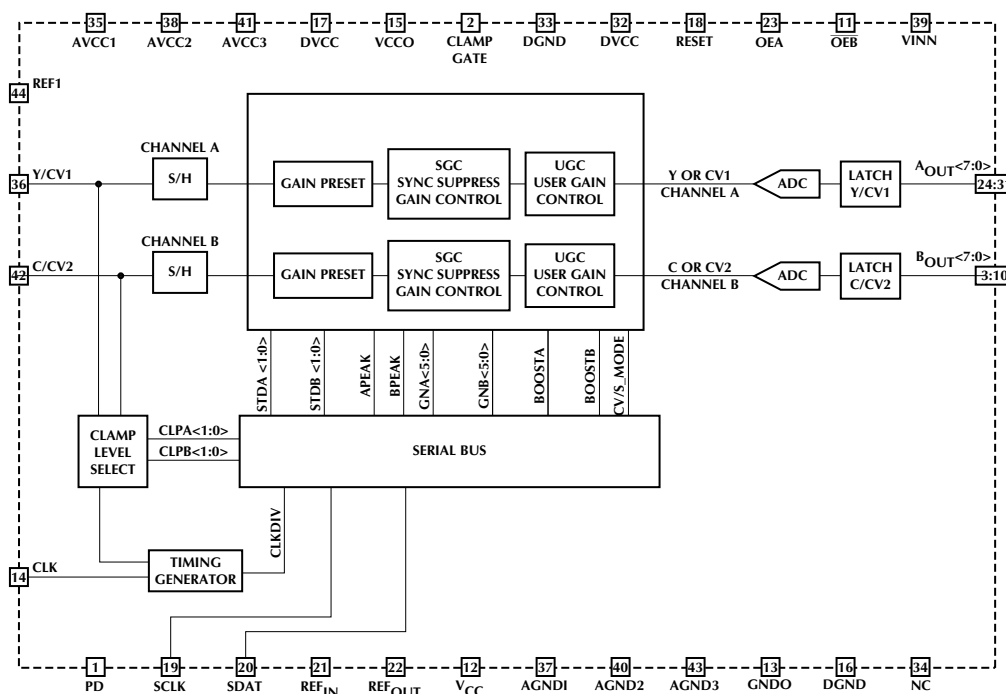
The ML6411 is a Dual Video A/D converter, incorporating two input sample and holds, two high speed 8-Bit A/D converters, programmable gain control, selectable clamps, multi-phase clocking, and reference voltage generation. The ML6411 can be used to convert the following analog signals to digital signals: two composite channels or S-video channel.

All inputs are provided with appropriate input selectable clamps to establish DC level. The clamps are full DC restore circuits with the A-to-D converters in each respective correction loop. The clamps are selectable to 16, 24, 64, and 128. The programmable gain control provides various possibilities to select and adjust the gain via two separate mechanisms: Sync-Suppressed Gain Control (SGC) for sync suppressed video such as RGB, and User Gain Control (UGC) for video formats that require scalable gain settings. Each of these can be programmed through a serial bus.

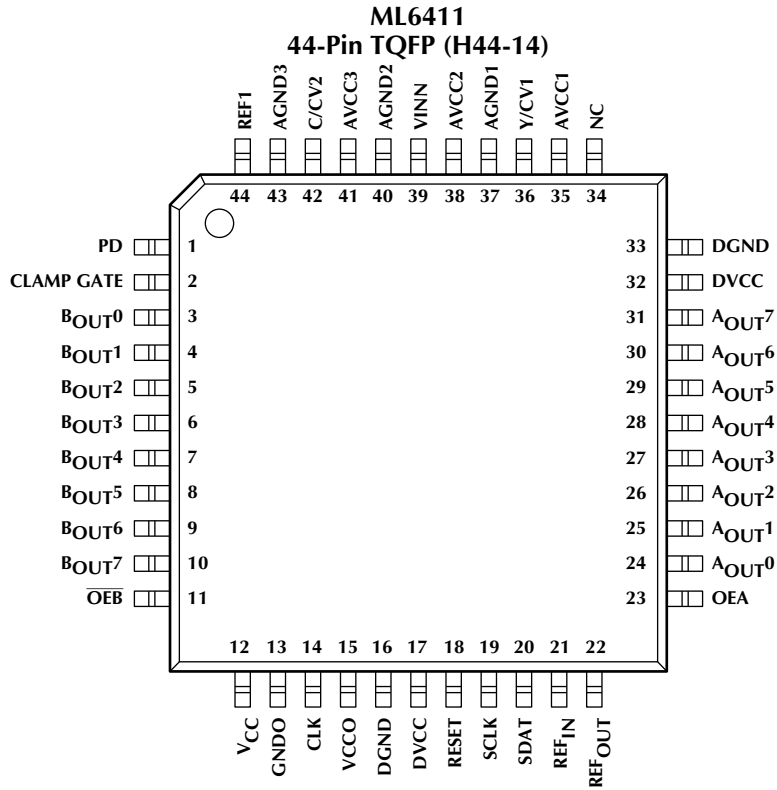
## FEATURES

- Complete video digitizer for Y/C and CV video
- Contains A/D's with scalable gain, selectable clamps, and clock generation (programmable via serial bus)
- Two 8-Bit +/- 1/2 LSB Differential Non-Linearity with 30MHz guaranteed conversion
- Two Gain Control Mechanisms for programmable or sync-suppressed video gain control
- Selectable Video Clamping: 16, 24, 64, 128
- Selectable Video Gain: 3dB to -6dB
- Operating total power dissipation less than 425mW
- Power down mode and Tri-state output control
- Applications: Video Capture, Video Editing, Video Cameras, Y/C and CV analog to digital conversion
- 44-pin TQFP

## BLOCK DIAGRAM



## PIN CONFIGURATION



## PIN DESCRIPTION

| PIN  | NAME                    | FUNCTION  | PIN   | NAME                   | FUNCTION   |
|------|-------------------------|---|-------|------------------------|--|
| 1    | PD                      | When high, power downs the chip. TTL compatible   | 23    | OEA                    | Output enable for the AOOUT channel. Active high. TTL compatible   |
| 2    | Clamp Gate              | Luma clamp gate input. Clamps to selected level when high. TTL compatible   | 24-31 | A <sub>OUT</sub> <7:0> | Luma bit 7 (A <sub>OUT</sub> 7 MSB) thru Luma bit 0 (A <sub>OUT</sub> 0 LSB) outputs or Composite bit 7 (MSB) thru Composite bit 0 (LSB) outputs. TTL compatible |
| 3-10 | B <sub>OUT</sub> <7:0>  | Either chroma bits 7 (B <sub>OUT</sub> 7MSB) to 0 (B <sub>OUT</sub> 0 LSB) or composite bits 7 (MSB) to 0 (LSB). TTL compatible | 32    | DVCC                   | Digital supply pin   |
| 11   | $\overline{\text{OEB}}$ | Output enable for the BOOUT channel. Active low. TTL compatible   | 33    | DGND                   | Digital ground pin   |
| 12   | VCC                     | Reference voltage. Tie to Digital V <sub>CC</sub>   | 34    | NC                     | No connection  |
| 13   | GNDO                    | Output ground pin   | 35    | AVCC1                  | Analog supply pin  |
| 14   | CLK                     | Clock input pin. TTL compatible   | 36    | Y/CV1                  | Y or CV (primary composite) input pin  |
| 15   | VCCO                    | Output supply pin   | 37    | AGND1                  | Analog ground pin  |
| 16   | DGND                    | Digital ground pin  | 38    | AVCC2                  | Analog supply pin  |
| 17   | DVCC                    | Digital supply pin  | 39    | VINN                   | Internal common mode bias of the A/D   |
| 18   | RESET                   | Resets the control registers to nominal values. Active HIGH. TTL compatible input   | 40    | AGND2                  | Analog ground pin  |
| 19   | SCLK                    | Control Bus Clock. Address latched on rising edge, data on falling edge   | 41    | AVCC3                  | Analog supply pin  |
| 20   | SDAT                    | Control data  | 42    | C/CV2                  | C (modulated chroma) or CV (2 <sup>nd</sup> composite for dual channel mode) input pin   |
| 21   | REF <sub>IN</sub>       | Internal reference tied to REF <sub>OUT</sub>   | 43    | AGND3                  | Analog ground pin  |
| 22   | REF <sub>OUT</sub>      | Internal reference tied to REF <sub>IN</sub>  | 44    | REF1                   | Internal reference. Tie this pin thru 0.1uF capacitor to analog ground for proper operation  |

# ML6411

## ABSOLUTE MAXIMUM RATINGS

Absolute maximum ratings are those values beyond which the device could be permanently damaged. Absolute maximum ratings are stress ratings only and functional device operation is not implied.

DC Supply Voltage (AVCC, DVCC, VCCO) .... -0.3V to 7V  
 Analog & Digital Inputs/Outputs ..... -0.3 to AVCC+0.3V  
 Input Current Per Pin ..... -25mA to 25mA  
 Storage Temperature ..... -65°C to 150°C  
 Junction Temperature ..... 125°C

## OPERATING CONDITIONS

Temperature Range ..... 0°C to 70°C  
 Supply Range (AVCC, DVCC, VCCO) ..... 4.5V to 5.5V

## ELECTRICAL CHARACTERISTICS

Unless otherwise specified, AVCC, DVCC, VCCO = 4.5V to 5.5V, T<sub>A</sub> = Operating Temperature Range (Note 1)

| SYMBOL | PARAMETER | CONDITIONS | MIN | TYP | MAX | UNITS |
|--------|-----------|------------|-----|-----|-----|-------|
|--------|-----------|------------|-----|-----|-----|-------|

### POWER CONSUMPTION

|                   |                       |            |  |     |     |    |
|-------------------|-----------------------|------------|--|-----|-----|----|
| P <sub>diss</sub> | Max power dissipation | Clod = 0pF |  | 425 | 600 | mW |
|-------------------|-----------------------|------------|--|-----|-----|----|

### SUPPLY

|                   |                        |   |     |    |     |    |
|-------------------|------------------------|---|-----|----|-----|----|
| AVCC              | Analog supply voltage  |   | 4.5 |    | 5.5 | V  |
| DVCC              | Digital supply voltage |   | 4.5 |    | 5.5 | V  |
| VCCO              | Output supply voltage  |   | 4.5 |    | 5.5 | V  |
| IDD               | Digital supply current | FCLK = 30MHz  |     | 17 | 30  | mA |
| I <sub>O</sub>    | Output supply current  | FCLK=30MHz, V <sub>IN</sub> =NTSC, 40IRE modulated rate, Clod=0pF |     | 7  |     | mA |
| I <sub>shut</sub> | Shutdown current       |   |     | 5  |     | mA |

### INPUT SIGNALS (CLK, CLAMP GATE, OEA, OEB)

|                  |                          |                         |     |   |                  |    |
|------------------|--------------------------|-------------------------|-----|---|------------------|----|
| V <sub>IL</sub>  | Input Low Voltage        |                         | 0   |   | 0.8              | V  |
| V <sub>IH</sub>  | Input High Voltage       |                         | 2.4 |   | DV <sub>CC</sub> | V  |
| I <sub>IL</sub>  | High level Input Current | DV <sub>CC</sub> - 0.1V | -5  |   | 5                | μA |
| C <sub>IN1</sub> | Input Capacitance        |                         |     | 3 |                  | pF |

### INPUT SIGNALS (Y / CV1, C / CV2)

|                        |                         |   |     |      |     |    |
|------------------------|-------------------------|---|-----|------|-----|----|
| V <sub>IN</sub>        | Input Voltage           | Peak-to-peak for 2V                             | 1.0 | 2.0  | 3.0 | V  |
|                        |                         | Peak-to-peak for 1V                             | 0.5 | 1.0  | 1.5 | V  |
| C <sub>IN2</sub> Input | Capacitance             |   |     | 3    |     | pF |
| I <sub>charge</sub>    | Clamp Charge Current    | Clamp Gate = High, Digital Output < Clamp level |     | 700  |     | μA |
| I <sub>disch</sub>     | Clamp Discharge Current | Clamp Gate = High, Digital Output > Clamp level |     | -700 |     | μA |

### A TO D CONVERTER OUTPUTS (A<sub>OUT</sub><7:0>, B<sub>OUT</sub><7:0>)

|  |                           |                      |     |  |      |    |
|--|---------------------------|----------------------|-----|--|------|----|
|  | Low level output voltage  | I <sub>o</sub> = 2mA | 0   |  | 0.6  | V  |
|  | High level output voltage |                      | 2.4 |  | VCCO |    |
|  | Leakage current           | Tri-state mode       | -20 |  | 20   | μA |

**ELECTRICAL CHARACTERISTICS** (Continued)

| SYMBOL                           | PARAMETER                 | CONDITIONS                       | MIN | TYP | MAX | UNITS |
|----------------------------------|---------------------------|----------------------------------|-----|-----|-----|-------|
| <b>SWITCHING CHARACTERISTICS</b> |                           |                                  |     |     |     |       |
| FCLK                             | Clock input max frequency |                                  |     | 30  |     | MHz   |
| T <sub>cph</sub>                 | Clock input min high time | See Figure 2                     | 15  |     |     | ns    |
| T <sub>cpl</sub>                 | Clock input min low time  | See Figure 2                     | 15  |     |     | ns    |
|                                  | Clamp Gate Width          | V <sub>IN</sub> magnitude 2V max | 1.5 |     |     | μs    |
|                                  | Clamp Gate Width          | V <sub>IN</sub> magnitude > 2V   | 3.5 |     |     | μs    |

**ANALOG SIGNAL PROCESSING**

|  |                       |  |  |      |  |        |
|--|-----------------------|--|--|------|--|--------|
|  | Y/C Gain Match        | CGAIN1 = CGAIN2 = 0  |  | 1.01 |  | V/V    |
|  | Chroma Crosstalk      | Y <sub>IN</sub> = 5MHz and C <sub>IN</sub> = at DC;<br>or Y <sub>IN</sub> = at DC and C <sub>IN</sub> = 5MHz |  | -60  |  | dB     |
|  | Differential Gain     | V <sub>IN</sub> = NTSC 40 IRE modulated ramp<br>FCLK = 27 MHz  |  | 2    |  | %      |
|  | Differential Phase    | V <sub>IN</sub> = NTSC 40 IRE modulated ramp<br>FCLK = 27 MHz  |  | 1    |  | degree |
|  | Signal to Noise Ratio | V <sub>IN</sub> = 2V, 10MHz sinewave,<br>FCLK = 20MHz  |  | 48   |  | dB     |
|  |                       | V <sub>IN</sub> = 2V, 10MHz sinewave,<br>FCLK = 30MHz  |  | 45   |  | dB     |
|  | Distortion            | V <sub>IN</sub> = 2V, 10MHz, FCLK = 20MHz  |  | 0.3  |  | %      |
|  | SFDR                  | V <sub>IN</sub> = 2V, 10MHz, FCLK = 20MHz  |  | 54   |  | dB     |

**TRANSFER FUNCTION**

|  |                           |         |  |      |  |     |
|--|---------------------------|---------|--|------|--|-----|
|  | DC integral linearity     | @ 27MHz |  | ±0.8 |  | LSB |
|  | DC differential linearity | @ 27MHz |  | ±0.5 |  | LSB |

**GAIN CONTROL**

|                  |  |   |       |   |      |   |
|------------------|--|---|-------|---|------|---|
| G <sub>RES</sub> | Gain accuracy of UGC for a given gain level                    | Input = 1V <sub>p-p</sub> or 2V <sub>p-p</sub> (See Note 2) | -30mV |   | 30mV | % |
|                  | Absolute gain error  |   |       | 5 |      | % |
|                  | Gain accuracy for standard preset gain,<br>G <sub>PRESET</sub> |   |       | 1 |      | % |

**OUTPUT TIMING**

|                 |                     |              |  |    |  |    |
|-----------------|---------------------|--------------|--|----|--|----|
| t <sub>ds</sub> | Sampling delay      | See Figure 2 |  | 8  |  | ns |
| t <sub>ho</sub> | Output hold time    | See Figure 2 |  | 10 |  | ns |
| t <sub>do</sub> | Output delay time   | See Figure 2 |  | 12 |  | ns |
| t <sub>oe</sub> | Output enable time  | See Figure 2 |  | 5  |  | ns |
| t <sub>od</sub> | Output disable time | See Figure 2 |  | 5  |  | ns |

**Note 1:** Limits are guaranteed by 100% testing, sampling, or correlation with worst-case test conditions.

**Note 2:** Volt Peak-to-Peak = V<sub>p-p</sub>

## SERIAL BUS

Unless otherwise specified, AVCC, DVCC, VCCO = 4.5V to 5.5V, T<sub>A</sub> = Operating Temperature Range (Note 1)

| SYMBOL              | PARAMETER                | CONDITIONS                         | MIN                   | TYP | MAX             | UNITS |
|---------------------|--------------------------|------------------------------------|-----------------------|-----|-----------------|-------|
| <b>INPUT (SDAT)</b> |                          |                                    |                       |     |                 |       |
| V <sub>IL</sub>     | Low Level Input Voltage  |                                    | 0                     |     | 0.8             | V     |
| V <sub>IH</sub>     | High Level Input Voltage |                                    | V <sub>CC</sub> - 0.8 |     | V <sub>CC</sub> | V     |
| I <sub>IL</sub>     | Low Level Input Current  | V <sub>IN</sub> = 0V               |                       |     | 1.0             | μA    |
| I <sub>IH</sub>     | High Level Input Current | V <sub>IN</sub> = DV <sub>CC</sub> |                       |     | 1.0             | μA    |
| Z <sub>IN</sub>     | Input Impedance          | f <sub>CLK</sub> = 100kHz          |                       | 1   |                 | MΩ    |
| C <sub>IN</sub>     | Input Capacitance        |                                    |                       | 2   |                 | pF    |

### SYSTEM TIMING (SCLK)

|                       |  |                              |     |     |     |     |
|-----------------------|--|------------------------------|-----|-----|-----|-----|
| f <sub>CLOCK</sub>    | S <sub>CLK</sub> Frequency                         |                              |     |     | 100 | kHz |
| V <sub>HYS</sub>      | Input Hysteresis                                   |                              | 0.2 |     |     | V   |
| t <sub>SPIKE</sub>    | Spike Suppression                                  | Max Length for Zero Response |     | 50  |     | ns  |
| t <sub>WAIT</sub>     | Wait Time From STOP to START On S <sub>DATA</sub>  |                              |     | 1.3 |     | μs  |
| t <sub>HD/START</sub> | Hold Time for START On S <sub>DATA</sub>           |                              |     | 0.6 |     | μs  |
| t <sub>SU/START</sub> | Setup Time for START On S <sub>DATA</sub>          |                              |     | 0.6 |     | μs  |
| t <sub>LOW</sub>      | Min LOW Time On S <sub>CLK</sub>                   |                              | 1.3 |     |     | μs  |
| t <sub>HI</sub>       | Min HIGH Time On S <sub>CLK</sub>                  |                              | 0.6 |     |     | μs  |
| t <sub>HD/DATA</sub>  | Hold Time On S <sub>DATA</sub>                     |                              |     | 5.0 |     | μs  |
| t <sub>SU/DATA</sub>  | Setup Time On                                      | Fast mode                    | 100 |     |     | ns  |
|                       |  | Slow mode                    | 250 |     |     | ns  |
| t <sub>LH</sub>       | Rise Time for S <sub>CLK</sub> & S <sub>DATA</sub> |                              |     | 30  | 300 | ns  |
| t <sub>HL</sub>       | Fall Time for S <sub>CLK</sub> & S <sub>DATA</sub> |                              |     | 30  | 300 | ns  |
| t <sub>SU/STOP</sub>  | Setup Time for STOP On S <sub>DATA</sub>           |                              |     | 0.6 |     | μs  |

**Note 1:** Limits are guaranteed by 100% testing, sampling, or correlation with worst case test conditions.

**Note 2:** All specifications include reconstruction filter and line driver.

**Note 3:** Normalized to burst.

## FUNCTIONAL DESCRIPTION

### GENERAL

The Universal Video Digitizer is a single-chip Video A/D converter with an analog front end which is intended for analog to digital conversion of 2V peak-to-peak ( $V_{P-P}$ ) or 1V $_{P-P}$  signals at rates up to 30 MSPS through a high performance A/D with  $\pm\frac{1}{2}$  DNL performance. It forms a complete solution for data conversion of dual CV and Y/C signals including gain settings and clamp settings by incorporating clamps, user selectable gain controls (UGC and SGC), bias and clock generation.

The ML6411 consist of two video clamps, two sample and hold amplifiers, two three-stage pipeline A/D converters, digital error correction circuitry, selectable clamps, programmable gain control, bias voltage generation and clock generation. The operating power dissipation is 425mW typical.

### INPUT FOR VARIOUS VIDEO MODES

The ML6411 can digitize various analog video inputs: S-Video (Y/C), or composite video (CV). Again, for each video channel, the gain and clamps can be selected. A description of each of these modes is described below. The Table 1 below provides a summary of the various modes.

#### Dual Channel Composite Video (CV1 and CV2) Mode

The composite input channels are provided through the Y/ CV1 (A channel) and C/CV2 (B channel) pins. To activate this mode, the CV/S\_Mode Bit (Register D, Bit D3) must set HIGH (D3=1). This mode is selectable via serial bus. In this mode, the two S&H circuits for each channel can be clocked up to 30MHz. Each CV channel can be then scaled for a desired gain setting using the User Gain Control (UGC). Standard gain selection can also be chosen using the preset gain modes for 2V $_{P-P}$  signals only. For 1V $_{P-P}$  signals, the preset gain selection mode is not available; however the UGC functions can be used to select gain values. The preset gain modes are for typical NTSC or PAL composite video and are selectable via serial bus through the STDA<1:0> and STDB<1:0> (Register B, Bits B4, B3, B2, and B1) bits. When using the preset gain mode, the output signals are enhanced by amplifying the input signal by the value of  $G_{PRESET}$  (see Table 2). In addition, the clamp levels can be selected for either channel for 16, 24, 64, and 128 binary levels (depending on the channel) via the serial bus through the CLPA<1:0> and CLPB<1:0> bits (see Table 3).

#### S-Video (Y / C) Mode

The input channels are provided through the Y/CV1 (A channel) and C/CV2 (B channel) pins. To activate this mode, the CV/S\_Mode Bit (Register D, Bit D3) must be set LOW (D3=0). This mode is selectable via serial bus. In this mode, the two S&H circuits for each channel can be clocked up to 30MHz. Each channel (Y and C) can be then scaled for a desired gain setting using the User Gain

Control (UGC). Standard gain selection can also be chosen using the preset gain modes for 2V $_{P-P}$  signals only. For 1V $_{P-P}$  signals, the preset gain selection mode is not available; however the UGC functions can be used to select gain values. The preset gain modes are for typical NTSC or PAL S-Video and are selectable via serial bus through the STDA<1:0> and STDB<1:0> (Register B, Bits B4, B3, B2, and B1) bits. When using the preset gain mode, the output signals are enhanced by amplifying the input signal by the value of  $G_{PRESET}$  (see Table 2). In addition, the clamp levels can be selected for either channel for 16, 24, 64, and 128 binary levels (depending on the channel 24 not available for C-channel) via the serial bus through the CLPA<1:0> and CLPB<1:0> bits (see Table 3).

### Input Voltage Selection

The ML6411 can support 1V $_{P-P}$  and 2V $_{P-P}$  input video. Selection for the voltage input is programmed via control register on the APEAK and BPEAK bits, A channel and B channel, respectively (see Table 7).

### GAIN SELECTION CONTROL (UGC AND SGC)

There are two separate control mechanisms that can be used to scale gain settings for the incoming video format: User Gain Control (UGC) and Sync-suppressed Gain Control (SGC).

#### User Gain Control (UGC)

The user gain control function is achieved through a variation of the full scale range of the A/D converters. This will provide the user with approximately  $\pm 3$ dB gain variation as needed. Y reference and C reference are supplied by two independent DACs. The user can adjust the gain of each ADC independently providing the 6-Bit code for the gain control through serial interface for each A/D. Each step change can increment or decrement the gain by 3% and allows for up to 64 different gain setting levels per channel. The UGC can be used for both 1V and 2V $_{P-P}$  inputs. When using the UGC mode, the output signals are enhanced by amplifying the input signal by the value of  $G_{UGC}$ . Table 4 provides a summary of the possible incremental ranges. The gain accuracy of the UGC for each of the 64 levels is  $\pm 1.5\%$ . The UGC gain settings are selected via serial bus by programming Registers C, D, and E on the GNA<5:0> bits for the A-channel and GNB<5:0> bits for the B-channel.

Unity gain is set at default for GNA<5:0> = 100,000 and GNB<5:0> = 100,000. For values of GNA<5:0> and GNB<5:0> from 100,000 to 111,111, the gain increases monotonically from 0dB (unity gain) to almost 3dB (actually 1.48x), while from 100,000 to 000,000 the gain decreases monotonically from 0dB (unity gain) to -3dB (0.5x). Note that Table 4 provides only approximation of gain values: actual gain values can vary from device to device.

## FUNCTIONAL DESCRIPTION (Continued)

### Sync-suppress Gain Control (SGC)

This control function is used for video where the sync signal is suppressed (i.e., chroma signal). In which case, the SGC can be activated to provide a 25% gain boost to each channel (Y and C). The SGC is activated via serial bus (Register D, Bits D1 and D2), also called the BOOSTA and BOOSTB programming bits. In the SGC mode, the output signals are enhanced by amplifying the input signal by the value of  $G_{SGC}$  (see Table 5).

### Using The Gain Control Blocks Together

The UGC combined provides digital gain control data to a variable gain control circuit while the SGC is directly in the A/D processing path. Hence the UGC sets variable gain control of the A/D.

When the UGC and the SGC are enabled. In this mode, the output gain is the combination of the different gain setting mechanisms:

For  $1V_{p-p}$  signals,

$$\text{Equation 1: Output Gain} = [\langle \text{Input Signal} \rangle \times G_{UGC} \times G_{SGC}] + \text{Clamp Level}$$

For  $2V_{p-p}$  signals,

$$\text{Equation 2: Output Gain} = [\langle \text{Input Signal} \rangle \times G_{UGC} \times G_{SGC} \times G_{PRESET}] + \text{Clamp Level}$$

Note that separate  $G_{UGC}$ ,  $G_{SGC}$ , and  $G_{PRESET}$  values are available for both channels A and B. There are up to 640 combinations of gain settings possible.

### WARNING

Note that it is possible to exceed the output voltage ranges for standard video using the combination of the gain setting mechanisms on the input signal. The user should take precaution in understanding the gain limits necessary and make the proper selection for each of the gain mechanism.

### A/D CONVERTER

The A/D conversion is performed via a three stage pipeline architecture. The first two stages quantize their input signal to the three bits, then subtract the result from the input and amplify by a factor of four. This creates a residue signal which spans the full scale range of the following converter. The subtraction and amplification is performed via a bottom plate sampling capacitor feedback amplifier, similar to the input sample and hold. The third stage quantizes the signal to four bits. One bit from each of the last two stages is used for error correction.

The first stage A/D performs the conversion at the end of the sample and holds period, approximately one-half

cycle later, after the subtraction/amplification of the first stage has settled. The third stage A/D performs the conversion after another one-half cycle delay, when the second stage has settled. Error correction is then performed and, one clock cycle later, data is transferred to the output latch. This creates a 3 clock latency.

### INPUT SAMPLE AND HOLD

The input sample and hold consist of a bottom plate sampling capacitor feedback amplifier. The input capacitance is 0.4pF, plus transmission gate. The input to the sample and hold is driven differentially. The sample and hold samples the input signal during the positive half cycle of the input clock, and holds the last value of the input during the negative half cycle of the input clock. The settling time of the amplifier is less than 10nS.

### INPUT COUPLING AND DC CLAMP PROGRAM SELECTION

All inputs are AC coupled into the positive sampling capacitor of the sample and hold. Each input capacitor becomes the integrating component for the DC restore clamps. The direction of clamp current depends on the data at the A/D output during the clamp gating pulse. For the color channel (i.e. C in Y/C mode) the clamp level is 128. If the code is above this number during the gate pulse, the current source will sink current from the input capacitor in order to drive the input voltage lower. Otherwise, the current source will source current to raise the input voltage. Clamp currents are shown in Table 6.

The clamp values of 16, 24, 64, 128 can be select via register program (Register A and B) through the serial bus. Note that there is no Level 24 in the B channel. The  $CLPA\langle 1:0 \rangle$  controls the clamp settings for the A-channel, while the  $CLPB\langle 1:0 \rangle$  controls the clamp settings for the B-channel. For example, clamp values can be selected independently for the chroma channel in Y/C mode ( $CLPB\langle 1:0 \rangle$ ). Once the clamp settings are selected, the clamps are active when the ClampGate is asserted HIGH. The ClampGate signal is an external signal provided by a genlock/sync clock device that is genlocked to the horizontal sync of the video input. The ML6431 can be used to generate the ClampGate signal (see Application Section).

### SERIAL PROGRAM

The ML6411 can be register programmed through the serial bus. Clamping and gain setting can be selected for various video formats. This serial bus is a standard three-pin interface with data, clock, and ground. See Timing Control information. Table 7 provides a description the Register information. Please see section "Input Coupling and DC Clamp Program Selection" and "Gain Select Control".



## FUNCTIONAL DESCRIPTION (Continued)

### RESET DEFAULT MODE

The ML6411 provides a RESET pin that programs the Control Registers as described in Table 8. The RESET pin is active HIGH. Basically, the ML6411 on RESET defaults to:

- S-Video mode. Ideally, for PAL S-Video since Preset Mode (STDA and STDB bits) is set to unity gain boost ( $G_{PRESET} = 1$ ) for both Y and C (see Table 2)
- Y is clamped to 16. C is clamped to 128 (see Table 3) and CLPA and CLPB bits)

- UGC is set to unity gain ( $G_{UGCA} = 1$  and  $G_{UGCB} = 1$ ) to either Y or C channels (see Table 4 and GNA and GNB bits)
- Input pin are set for  $2V_{P-P}$  inputs on both Y and C

| MODE    | REGISTER/BIT VALUES                 | CHANNEL | SIGNAL | INPUT     | OUPUT             | OPTIONS   |
|---------|-------------------------------------|---------|--------|-----------|-------------------|---|
| Dual CV | Register D,<br>Bit D3= CV/S_Mode =1 | A       | CV1    | Y/CV1 pin | $A_{OUT}^{<7:0>}$ | Gain Control Selection (UGC, SGC) and Clamp Selection.<br>1V <sub>P-P</sub> or 2V <sub>P-P</sub> inputs.<br>Serial Bus Programable. |
|         |                                     | B       | CV2    | C/CV2 pin | $B_{OUT}^{<7:0>}$ |   |
| S-Video | Register D,<br>Bit D3= CV/S_Mode =0 | A       | Y      | Y/CV1 pin | $A_{OUT}^{<7:0>}$ | Gain Control Selection (UGC, SGC) and Clamp Selection.<br>1V <sub>P-P</sub> or 2V <sub>P-P</sub> inputs.<br>Serial Bus Programable. |
|         |                                     | B       | C      | C/CV2 pin | $B_{OUT}^{<7:0>}$ |   |

**Note:** Volt Peak-to-Peak =  $V_{P-P}$

**Table 1. Various Video Modes Using the ML6411 and Key Features**

## DUAL COMPOSITE VIDEO MODE

|                      | TYPICAL INPUTS |                | GAIN SELECTION OF AMPLIFIERS |           | GAIN FACTOR OF AMPLIFIERS (nominal) |                      |
|----------------------|----------------|----------------|------------------------------|-----------|-------------------------------------|----------------------|
|                      | Channel A      | Channel B      | Channel A                    | Channel B | Channel A                           | Channel B            |
| <b>STANDARD</b>      | CV1 Input (mV) | CV2 Input (mV) | STDA<1:0>                    | STDB<1:0> | G <sub>PRESETA</sub>                | G <sub>PRESETB</sub> |
| Composite Video NTSC | 1320           | 1320           | 01                           | 01        | 1.061                               | 1.061                |
| Composite Video PAL  | 1400           | 1400           | 00                           | 00        | 1                                   | 1                    |
| Preset Mode 1        | 1320           | 1320           | 01                           | 11        | 1.061                               | 0.7495               |
| Preset Mode 2        | 1428           | 1428           | 11                           | 00        | 1.02                                | 1                    |
| Preset Mode 3        | 1400           | 1400           | 00                           | 11        | 1                                   | 0.7495               |
| Preset Mode 4        | 1294           | 1294           | 10                           | 10        | 1.082                               | 1.082                |

## S-VIDEO MODE

|                 | TYPICAL INPUTS |              | GAIN SELECTION OF AMPLIFIERS |           | GAIN FACTOR OF AMPLIFIERS (nominal) |                      |
|-----------------|----------------|--------------|------------------------------|-----------|-------------------------------------|----------------------|
|                 | Channel A      | Channel B    | Channel A                    | Channel B | Channel A                           | Channel B            |
| <b>STANDARD</b> | Y Input (mV)   | C Input (mV) | STDA<1:0>                    | STDB<1:0> | G <sub>PRESETA</sub>                | G <sub>PRESETB</sub> |
| S-Video NTSC    | 1320           | 1320         | 01                           | 01        | 1.061                               | 1.061                |
| S- Video PAL    | 1400           | 1400         | 00                           | 00        | 1                                   | 1                    |
| Preset Mode 1   | 1320           | 1320         | 01                           | 11        | 1.061                               | 0.7495               |
| Preset Mode 2   | 1428           | 1428         | 11                           | 00        | 1.02                                | 1                    |
| Preset Mode 3   | 1400           | 1400         | 00                           | 11        | 1                                   | 0.7495               |
| Preset Mode 4   | 1294           | 1294         | 10                           | 10        | 1.082                               | 1.082                |

**Table 2. Video Standard Preset Gain Selection Modes**

## DUAL COMPOSITE MODE

| CLAMP LEVEL     |     | CLPA1 BIT | CLPA0 BIT | NOTES   |
|-----------------|-----|-----------|-----------|---|
| Channel A (CV1) | 16  | 0         | 0         | Typical CV Clamp. Defaults to this value on RESET |
|                 | 24  | 1         | 0         |   |
|                 | 64  | 0         | 1         |   |
|                 | 128 | 1         | 1         |   |

| CLAMP LEVEL     |     | CLPB1 BIT | CLPB0 BIT | NOTES                           |
|-----------------|-----|-----------|-----------|---------------------------------|
| Channel B (CV2) | 16  | 1         | 0         | Typical CV clamp.               |
|                 | 64  | 1         | 1         |                                 |
|                 | 128 | 0         | X         | Defaults to this value on RESET |

## S-VIDEO MODE

| CLAMP LEVEL   |     | CLPA1 BIT | CLPA0 BIT | NOTES  |
|---------------|-----|-----------|-----------|--|
| Channel A (Y) | 16  | 0         | 0         | Typical Y clamp. Defaults to this value on RESET |
|               | 24  | 1         | 0         |  |
|               | 64  | 0         | 1         |  |
|               | 128 | 1         | 1         |  |

| CLAMP LEVEL   |     | CLPB1 BIT | CLPB0 BIT | NOTES  |
|---------------|-----|-----------|-----------|--|
| Channel B (C) | 16  | 1         | 0         |  |
|               | 64  | 1         | 1         |  |
|               | 128 | 0         | X         | Typical C clamp. Defaults to this value on RESET |

Note: X = Don't Care

Table 3. Programmable Clamp Level Selection

## A-CHANNEL

|    | GNA5 | GNA4 | GNA3 | GNA2 | GNA1 | GNA0 | GAIN FACTOR<br>GUGCA<br>(NOMINAL) |
|----|------|------|------|------|------|------|-----------------------------------|
| 1  | 1    | 0    | 0    | 0    | 0    | 0    | 0.50                              |
| 2  | 1    | 0    | 0    | 0    | 0    | 1    | 0.52                              |
| 3  | 1    | 0    | 0    | 0    | 1    | 0    | 0.53                              |
| 4  | 1    | 0    | 0    | 0    | 1    | 1    | 0.55                              |
| 5  | 1    | 0    | 0    | 1    | 0    | 0    | 0.56                              |
| 6  | 1    | 0    | 0    | 1    | 0    | 1    | 0.58                              |
| 7  | 1    | 0    | 0    | 1    | 1    | 0    | 0.59                              |
| 8  | 1    | 0    | 0    | 1    | 1    | 1    | 0.61                              |
| 9  | 1    | 0    | 1    | 0    | 0    | 0    | 0.63                              |
| 10 | 1    | 0    | 1    | 0    | 0    | 1    | 0.64                              |
| 11 | 1    | 0    | 1    | 0    | 1    | 0    | 0.66                              |
| 12 | 1    | 0    | 1    | 0    | 1    | 1    | 0.67                              |
| 13 | 1    | 0    | 1    | 1    | 0    | 0    | 0.69                              |
| 14 | 1    | 0    | 1    | 1    | 0    | 1    | 0.70                              |
| 15 | 1    | 0    | 1    | 1    | 1    | 0    | 0.72                              |
| 16 | 1    | 0    | 1    | 1    | 1    | 1    | 0.73                              |
| 17 | 1    | 1    | 0    | 0    | 0    | 0    | 0.75                              |
| 18 | 1    | 1    | 0    | 0    | 0    | 1    | 0.77                              |
| 19 | 1    | 1    | 0    | 0    | 1    | 0    | 0.78                              |
| 20 | 1    | 1    | 0    | 0    | 1    | 1    | 0.80                              |
| 21 | 1    | 1    | 0    | 1    | 0    | 0    | 0.81                              |
| 22 | 1    | 1    | 0    | 1    | 0    | 1    | 0.83                              |
| 23 | 1    | 1    | 0    | 1    | 1    | 0    | 0.84                              |
| 24 | 1    | 1    | 0    | 1    | 1    | 1    | 0.86                              |
| 25 | 1    | 1    | 1    | 0    | 0    | 0    | 0.88                              |
| 26 | 1    | 1    | 1    | 0    | 0    | 1    | 0.89                              |
| 27 | 1    | 1    | 1    | 0    | 1    | 0    | 0.91                              |
| 28 | 1    | 1    | 1    | 0    | 1    | 1    | 0.92                              |
| 29 | 1    | 1    | 1    | 1    | 0    | 0    | 0.94                              |
| 30 | 1    | 1    | 1    | 1    | 0    | 1    | 0.95                              |
| 31 | 1    | 1    | 1    | 1    | 1    | 0    | 0.97                              |
| 32 | 1    | 1    | 1    | 1    | 1    | 1    | 0.98                              |
| 33 | 0    | 0    | 0    | 0    | 0    | 0    | 1.00                              |
| 34 | 0    | 0    | 0    | 0    | 0    | 1    | 1.02                              |
| 35 | 0    | 0    | 0    | 0    | 1    | 0    | 1.03                              |
| 36 | 0    | 0    | 0    | 0    | 1    | 1    | 1.05                              |
| 37 | 0    | 0    | 0    | 1    | 0    | 0    | 1.06                              |
| 38 | 0    | 0    | 0    | 1    | 0    | 1    | 1.08                              |
| 39 | 0    | 0    | 0    | 1    | 1    | 0    | 1.09                              |
| 40 | 0    | 0    | 0    | 1    | 1    | 1    | 1.11                              |
| 41 | 0    | 0    | 1    | 0    | 0    | 0    | 1.13                              |
| 42 | 0    | 0    | 1    | 0    | 0    | 1    | 1.14                              |
| 43 | 0    | 0    | 1    | 0    | 1    | 0    | 1.16                              |
| 44 | 0    | 0    | 1    | 0    | 1    | 1    | 1.17                              |
| 45 | 0    | 0    | 1    | 1    | 0    | 0    | 1.19                              |
| 46 | 0    | 0    | 1    | 1    | 0    | 1    | 1.20                              |
| 47 | 0    | 0    | 1    | 1    | 1    | 0    | 1.22                              |
| 48 | 0    | 0    | 1    | 1    | 1    | 1    | 1.23                              |
| 49 | 0    | 1    | 0    | 0    | 0    | 0    | 1.25                              |
| 50 | 0    | 1    | 0    | 0    | 0    | 1    | 1.27                              |
| 51 | 0    | 1    | 0    | 0    | 1    | 0    | 1.28                              |
| 52 | 0    | 1    | 0    | 0    | 1    | 1    | 1.30                              |
| 53 | 0    | 1    | 0    | 1    | 0    | 0    | 1.31                              |
| 54 | 0    | 1    | 0    | 1    | 0    | 1    | 1.33                              |
| 55 | 0    | 1    | 0    | 1    | 1    | 0    | 1.34                              |
| 56 | 0    | 1    | 0    | 1    | 1    | 1    | 1.36                              |
| 57 | 0    | 1    | 1    | 0    | 0    | 0    | 1.38                              |
| 58 | 0    | 1    | 1    | 0    | 0    | 1    | 1.39                              |
| 59 | 0    | 1    | 1    | 0    | 1    | 0    | 1.41                              |
| 60 | 0    | 1    | 1    | 0    | 1    | 1    | 1.42                              |
| 61 | 0    | 1    | 1    | 1    | 0    | 0    | 1.44                              |
| 62 | 0    | 1    | 1    | 1    | 0    | 1    | 1.45                              |
| 63 | 0    | 1    | 1    | 1    | 1    | 0    | 1.47                              |
| 64 | 0    | 1    | 1    | 1    | 1    | 1    | 1.48                              |

## B-CHANNEL

|    | GNB5 | GNB4 | GNB3 | GNB2 | GNB1 | GNB0 | GAIN FACTOR<br>GUGCB<br>(NOMINAL) |
|----|------|------|------|------|------|------|-----------------------------------|
| 1  | 1    | 0    | 0    | 0    | 0    | 0    | 0.50                              |
| 2  | 1    | 0    | 0    | 0    | 0    | 1    | 0.52                              |
| 3  | 1    | 0    | 0    | 0    | 1    | 0    | 0.53                              |
| 4  | 1    | 0    | 0    | 0    | 1    | 1    | 0.55                              |
| 5  | 1    | 0    | 0    | 1    | 0    | 0    | 0.56                              |
| 6  | 1    | 0    | 0    | 1    | 0    | 1    | 0.58                              |
| 7  | 1    | 0    | 0    | 1    | 1    | 0    | 0.59                              |
| 8  | 1    | 0    | 0    | 1    | 1    | 1    | 0.61                              |
| 9  | 1    | 0    | 1    | 0    | 0    | 0    | 0.63                              |
| 10 | 1    | 0    | 1    | 0    | 0    | 1    | 0.64                              |
| 11 | 1    | 0    | 1    | 0    | 1    | 0    | 0.66                              |
| 12 | 1    | 0    | 1    | 0    | 1    | 1    | 0.67                              |
| 13 | 1    | 0    | 1    | 1    | 0    | 0    | 0.69                              |
| 14 | 1    | 0    | 1    | 1    | 0    | 1    | 0.70                              |
| 15 | 1    | 0    | 1    | 1    | 1    | 0    | 0.72                              |
| 16 | 1    | 0    | 1    | 1    | 1    | 1    | 0.73                              |
| 17 | 1    | 1    | 0    | 0    | 0    | 0    | 0.75                              |
| 18 | 1    | 1    | 0    | 0    | 0    | 1    | 0.77                              |
| 19 | 1    | 1    | 0    | 0    | 1    | 0    | 0.78                              |
| 20 | 1    | 1    | 0    | 0    | 1    | 1    | 0.80                              |
| 21 | 1    | 1    | 0    | 1    | 0    | 0    | 0.81                              |
| 22 | 1    | 1    | 0    | 1    | 0    | 1    | 0.83                              |
| 23 | 1    | 1    | 0    | 1    | 1    | 0    | 0.84                              |
| 24 | 1    | 1    | 0    | 1    | 1    | 1    | 0.86                              |
| 25 | 1    | 1    | 1    | 0    | 0    | 0    | 0.88                              |
| 26 | 1    | 1    | 1    | 0    | 0    | 1    | 0.89                              |
| 27 | 1    | 1    | 1    | 0    | 1    | 0    | 0.91                              |
| 28 | 1    | 1    | 1    | 0    | 1    | 1    | 0.92                              |
| 29 | 1    | 1    | 1    | 1    | 0    | 0    | 0.94                              |
| 30 | 1    | 1    | 1    | 1    | 0    | 1    | 0.95                              |
| 31 | 1    | 1    | 1    | 1    | 1    | 0    | 0.97                              |
| 32 | 1    | 1    | 1    | 1    | 1    | 1    | 0.98                              |
| 33 | 0    | 0    | 0    | 0    | 0    | 0    | 1.00                              |
| 34 | 0    | 0    | 0    | 0    | 0    | 1    | 1.02                              |
| 35 | 0    | 0    | 0    | 0    | 1    | 0    | 1.03                              |
| 36 | 0    | 0    | 0    | 0    | 1    | 1    | 1.05                              |
| 37 | 0    | 0    | 0    | 1    | 0    | 0    | 1.06                              |
| 38 | 0    | 0    | 0    | 1    | 0    | 1    | 1.08                              |
| 39 | 0    | 0    | 0    | 1    | 1    | 0    | 1.09                              |
| 40 | 0    | 0    | 0    | 1    | 1    | 1    | 1.11                              |
| 41 | 0    | 0    | 1    | 0    | 0    | 0    | 1.13                              |
| 42 | 0    | 0    | 1    | 0    | 0    | 1    | 1.14                              |
| 43 | 0    | 0    | 1    | 0    | 1    | 0    | 1.16                              |
| 44 | 0    | 0    | 1    | 0    | 1    | 1    | 1.17                              |
| 45 | 0    | 0    | 1    | 1    | 0    | 0    | 1.19                              |
| 46 | 0    | 0    | 1    | 1    | 0    | 1    | 1.20                              |
| 47 | 0    | 0    | 1    | 1    | 1    | 0    | 1.22                              |
| 48 | 0    | 0    | 1    | 1    | 1    | 1    | 1.23                              |
| 49 | 0    | 1    | 0    | 0    | 0    | 0    | 1.25                              |
| 50 | 0    | 1    | 0    | 0    | 0    | 1    | 1.27                              |
| 51 | 0    | 1    | 0    | 0    | 1    | 0    | 1.28                              |
| 52 | 0    | 1    | 0    | 0    | 1    | 1    | 1.30                              |
| 53 | 0    | 1    | 0    | 1    | 0    | 0    | 1.31                              |
| 54 | 0    | 1    | 0    | 1    | 0    | 1    | 1.33                              |
| 55 | 0    | 1    | 0    | 1    | 1    | 0    | 1.34                              |
| 56 | 0    | 1    | 0    | 1    | 1    | 1    | 1.36                              |
| 57 | 0    | 1    | 1    | 0    | 0    | 0    | 1.38                              |
| 58 | 0    | 1    | 1    | 0    | 0    | 1    | 1.39                              |
| 59 | 0    | 1    | 1    | 0    | 1    | 0    | 1.41                              |
| 60 | 0    | 1    | 1    | 0    | 1    | 1    | 1.42                              |
| 61 | 0    | 1    | 1    | 1    | 0    | 0    | 1.44                              |
| 62 | 0    | 1    | 1    | 1    | 0    | 1    | 1.45                              |
| 63 | 0    | 1    | 1    | 1    | 1    | 0    | 1.47                              |
| 64 | 0    | 1    | 1    | 1    | 1    | 1    | 1.48                              |

Table 4. Gain Approximations for User Gain Control (UGC) Block

| CHANNEL | REGISTER/BIT VALUES               | GAIN FACTOR       |
|---------|-----------------------------------|-------------------|
| A       | REGISTER D, BIT D1 = "BOOSTA" = 0 | $G_{SGCA} = 1$    |
|         | REGISTER D, BIT D1 = "BOOSTA" = 1 | $G_{SGCA} = 1.25$ |
| B       | REGISTER D, BIT D2 = "BOOSTB" = 0 | $G_{SGCB} = 1$    |
|         | REGISTER D, BIT D2 = "BOOSTB" = 1 | $G_{SGCB} = 1.25$ |

Table 5. SGC Gain Mode

| CLAMP GATE SIGNAL | CLAMP LEVEL | OUTPUT    | CLAMP CURRENT |
|-------------------|-------------|-----------|---------------|
| 0                 | X           | X         | 0             |
| 1                 | 00          | OUT < 16  | 700 $\mu$ A   |
|                   | 00          | OUT > 16  | -700 $\mu$ A  |
|                   | 01          | OUT < 64  | 700 $\mu$ A   |
|                   | 01          | OUT > 64  | -700 $\mu$ A  |
|                   | 10          | OUT < 24  | 700 $\mu$ A   |
|                   | 10          | OUT > 24  | -700 $\mu$ A  |
|                   | 11          | OUT < 128 | 700 $\mu$ A   |
|                   | 11          | OUT > 128 | -700 $\mu$ A  |

Table 6: Clamp Current for Various Clamp Levels

## REGISTER INFORMATION AND ORGANIZATION

| REGISTER | ADDRESS | DATA BIT | NAME      | DESCRIPTION  | BIT CODE RANGE                                   |
|----------|---------|----------|-----------|--|--|
| A        | 000     | A0       | CLPA0     | Sets Clamp Level for the A Channel                 | See Table 3                                      |
|          |         | A1       | CLPA1     | Sets Clamp Level for the A Channel                 | See Table 3                                      |
|          |         | A2       | Reserved  | Reserved   | Don't Care                                       |
|          |         | A3       | Reserved  | Reserved   | Don't Care                                       |
|          |         | A4       | CLPB0     | Sets Clamp Level for the B Channel                 | See Table 3                                      |
| B        | 001     | B0       | CLPB1     | Sets Clamp Level for the B Channel                 | See Table 3                                      |
|          |         | B1       | STDB0     | Selects Standard Preset Gain Level for B Channel   | See Table 2                                      |
|          |         | B2       | STDB1     | Selects Standard Preset Gain Level for B Channel   | See Table 2                                      |
|          |         | B3       | STDA0     | Selects Standard Preset Gain Level for A Channel   | See Table 2                                      |
|          |         | B4       | STDA1     | Selects Standard Preset Gain Level for A Channel   | See Table 2                                      |
| C        | 010     | C0       | GNA0      | Sets User Defined Gain Level for A Channel         | See Table 4                                      |
|          |         | C1       | GNA1      | Sets User Defined Gain Level for A Channel         | See Table 4                                      |
|          |         | C2       | GNA2      | Sets User Defined Gain Level for A Channel         | See Table 4                                      |
|          |         | C3       | GNA3      | Sets User Defined Gain Level for A Channel         | See Table 4                                      |
|          |         | C4       | GNA4      | Sets User Defined Gain Level for A Channel         | See Table 4                                      |
| D        | 011     | D0       | GNA5      | Sets User Defined Gain Level for A Channel         | See Table 4                                      |
|          |         | D1       | BOOSTA    | Provides 25% Extra Gain on A Channel               | 0 = 1 x Gain;<br>1 = 1.25 x Gain;<br>See Table 5 |
|          |         | D2       | BOOSTB    | Provides 25% Extra Gain on B Channel               | 0 = 1 x Gain;<br>1 = 1.25 x Gain;<br>See Table 5 |
|          |         | D3       | CV/S_Mode | Select Dual Composite Mode or S-Video Mode         | 0 = S-Video Mode;<br>1 = Dual Composite Mode     |
|          |         | D4       | GNB0      | Selects User Defined Gain Level for B Channel      | See Table 4                                      |
| E        | 100     | E0       | GNB1      | Sets User Defined Gain Level for B Channel         | See Table 4                                      |
|          |         | E1       | GNB2      | Sets User Defined Gain Level for B Channel         | See Table 4                                      |
|          |         | E2       | GNB3      | Sets User Defined Gain Level for B Channel         | See Table 4                                      |
|          |         | E3       | GNB4      | Sets User Defined Gain Level for B Channel         | See Table 4                                      |
|          |         | E4       | GNB5      | Sets User Defined Gain Level for B Channel         | See Table 4                                      |
| F        | 101     | F0       | Reserved  | Set to 0 for Proper Operation                      | F0 = 0   |
|          |         | F1       | APEAK     | Sets A Channel for $1V_{p,p}$ or $2V_{p,p}$ inputs | 1 = $1V_{p,p}$<br>0 = $2V_{p,p}$                 |
|          |         | F2       | BPEAK     | Sets B Channel for $1V_{p,p}$ or $2V_{p,p}$ inputs | 1 = $1V_{p,p}$<br>0 = $2V_{p,p}$                 |
|          |         | F3       | CLKDIV    | Sets Internal Clock Frequency to Divide-by-2       | 1 = $1V_{p,p}$<br>0 = $2V_{p,p}$                 |
|          |         | F4       | Reserved  | Recommend 0 for RESET and 1 for Normal Operation   | 0 or 1 is Acceptable                             |

Note: Volt Peak-to-Peak =  $V_{p,p}$

Table 7: Control Register Summary

## REGISTER INFORMATION AND ORGANIZATION

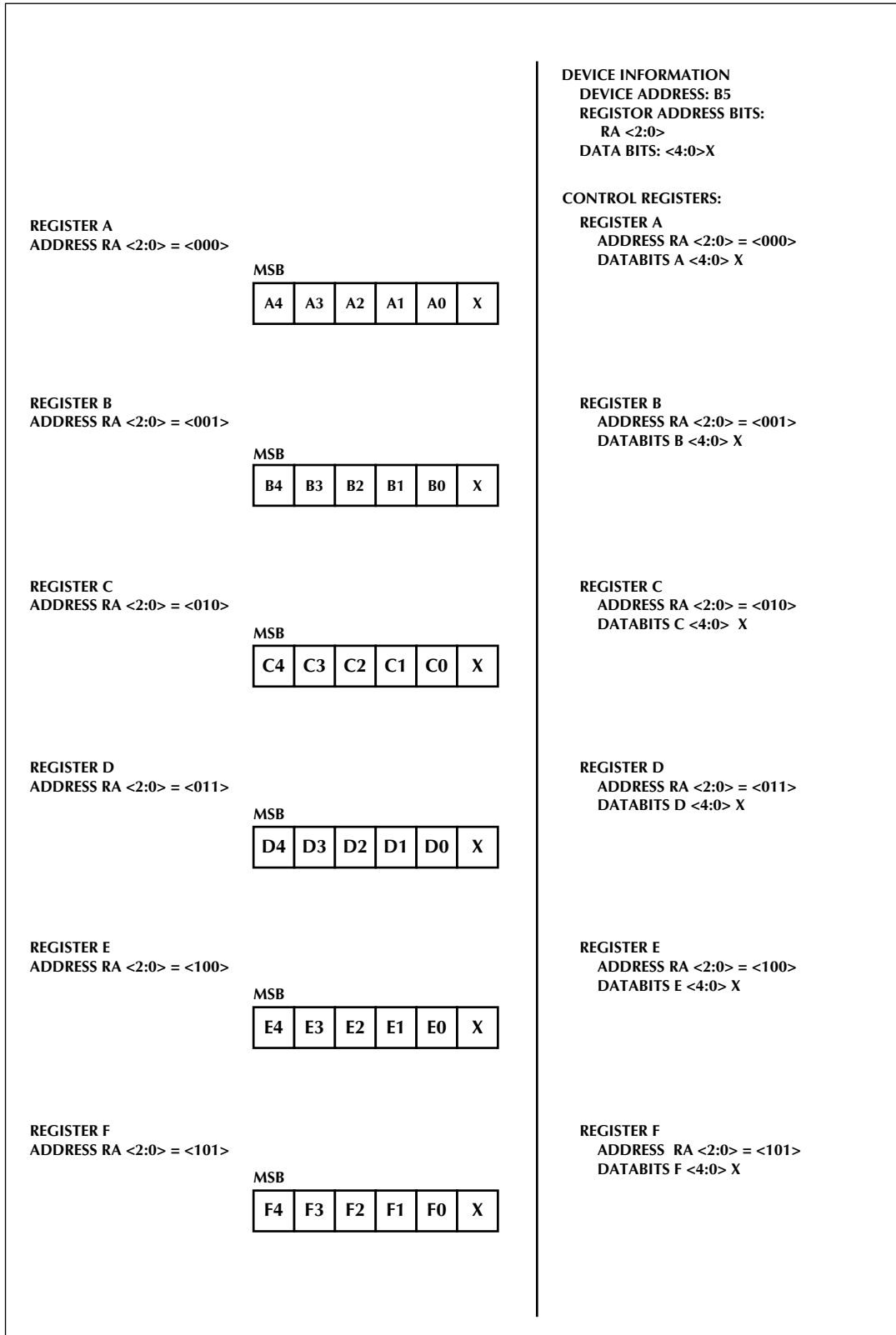
| REGISTER | ADDRESS | DATA BIT | NAME      | DESCRIPTION  | DEFAULT SETTING  |
|----------|---------|----------|-----------|--|------------------|
| A        | 000     | A0       | CLPA0     | Sets Clamp Level for the A Channel to 16                       | 0                |
|          |         | A1       | CLPA1     |  | 0                |
|          |         | A2       | Reserved  | Reserved   | X                |
|          |         | A3       | Reserved  | Reserved   | X                |
|          |         | A4       | CLPB0     | Sets Clamp Level for the B Channel to 128                      | X                |
| B        | 001     | B0       | CLPB1     | Sets Clamp Level for the B Channel to 128                      | 0                |
|          |         | B1       | STDB0     | Selects Standard Preset Gain Level for B Channel (See Table 2) | 0                |
|          |         | B2       | STDB1     | Selects Standard Preset Gain Level for B Channel (See Table 2) | 0                |
|          |         | B3       | STDA0     | Selects Standard Preset Gain Level for A Channel (See Table 2) | 0                |
|          |         | B4       | STDA1     | Selects Standard Preset Gain Level for A Channel (See Table 2) | 0                |
| C        | 010     | C0       | GNA0      | Sets User Defined Gain Level for A Channel (See Table 4)       | 0                |
|          |         | C1       | GNA1      | Sets User Defined Gain Level for A Channel (See Table 4)       | 0                |
|          |         | C2       | GNA2      | Sets User Defined Gain Level for A Channel (See Table 4)       | 0                |
|          |         | C3       | GNA3      | Sets User Defined Gain Level for A Channel (See Table 4)       | 0                |
|          |         | C4       | GNA4      | Sets User Defined Gain Level for A Channel (See Table 4)       | 0                |
| D        | 011     | D0       | GNA5      | Sets User Defined Gain Level for A Channel (See Table 4)       | 1                |
|          |         | D1       | BOOSTA    | Provides 25% Extra Gain on A Channel                           | 0 = 1 x Gain     |
|          |         | D2       | BOOSTB    | Provides 25% Extra Gain on B Channel (See Table C)             | 0 = 1 x Gain     |
|          |         | D3       | CV/S_Mode | Select Dual Composite Mode or S-Video Mode                     | 0 = S-Video Mode |
|          |         | D4       | GNB0      | Selects User Defined Gain Level for B Channel (See Table 4)    | 0                |
| E        | 100     | E0       | GNB1      | Sets User Defined Gain Level for B Channel (See Table 4)       | 0                |
|          |         | E1       | GNB2      | Sets User Defined Gain Level for B Channel (See Table 4)       | 0                |
|          |         | E2       | GNB3      | Sets User Defined Gain Level for B Channel (See Table 4)       | 0                |
|          |         | E3       | GNB4      | Sets User Defined Gain Level for B Channel (See Table 4)       | 0                |
|          |         | E4       | GNB5      | Sets User Defined Gain Level for B Channel (See Table 4)       | 1                |
| F        | 101     | F0       | Reserved  | Set to 0 for Proper Operation                                  | 0                |
|          |         | F1       | APEAK     | Sets A Channel for $1V_{p,p}$ or $2V_{p,p}$ inputs             | 0 = $2V_{p,p}$   |
|          |         | F2       | BPEAK     | Sets B Channel for $1V_{p,p}$ or $2V_{p,p}$ inputs             | 0 = $2V_{p,p}$   |
|          |         | F3       | CLKDIV    | Sets Internal Clock Frequency to Divide-by-2                   | 0 = CLK          |
|          |         | F4       | Reserved  | Recommend 0 for RESET and 1 for Normal Operation               | 0                |

Note: X = Don't Care

Note: Volt Peak-to-Peak =  $V_{p,p}$

Table 8: RESET Control Values of Control Register

## REGISTER INFORMATION AND ORGANIZATION



X = DUMMY BIT FOR ACKNOWLEDGE

Figure 1. Register Organization and Information



## TIMING CONTROL

The ML6411 operates in master mode where all internal timing is derived from the clock input at the CLK pin. Figure 2 provides timing diagrams for both the Dual Composite and Y/C modes. Note that the REF OUT pin provides the internal timing to the REF IN pin. These pins are shorted together for normal operation.

Serial Bus Timing. Figure 3 provides timing of serial bus mode. Figure 4 provides a detailed timing for device, register, and data insertion to the control registers. As

shown in Figure 1, there are six independent 5-bit registers in the Control Block. To load a register, the 3-bit address is loaded in first followed by the 5-bit data values and a dummy bit. This is a total of 9-bits to load a register with the last bit being a dummy bit. Note that all of the registers can be loaded in succession before the STOP condition is enabled.

The CLKDIV function provides an internal divide-by-2 clock. This function is enable via control register.

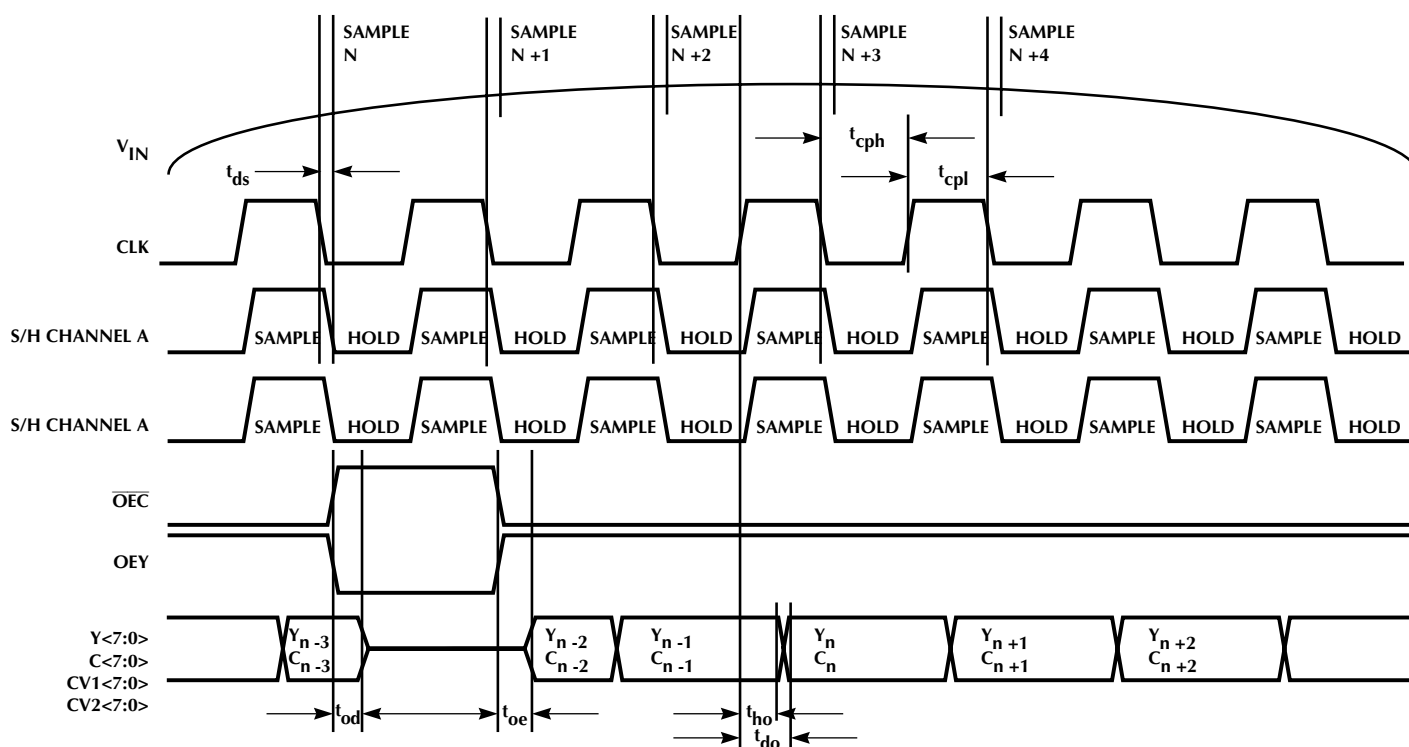


Figure 2. Y/C and Dual CV Mode

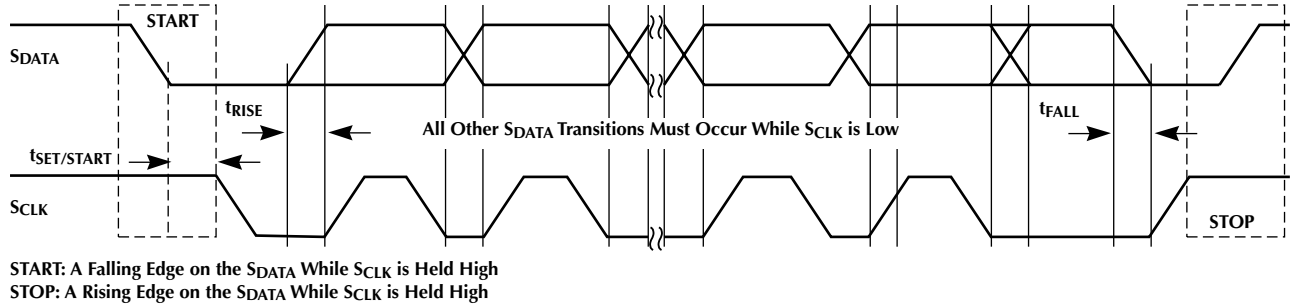


Figure 3. Definition of START & STOP on Serial Data Bus

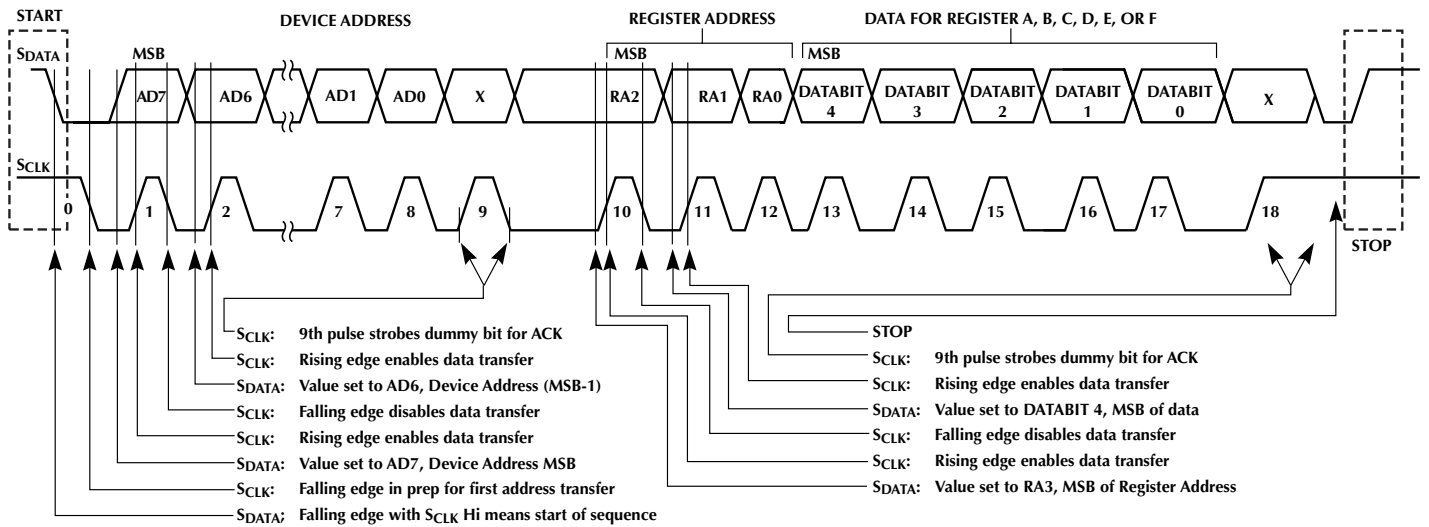


Figure 4. Definition of ADDRESS and DATA FORMAT on Serial Data Bus

## APPLICATION 1: VIDEO EDITING SYSTEMS

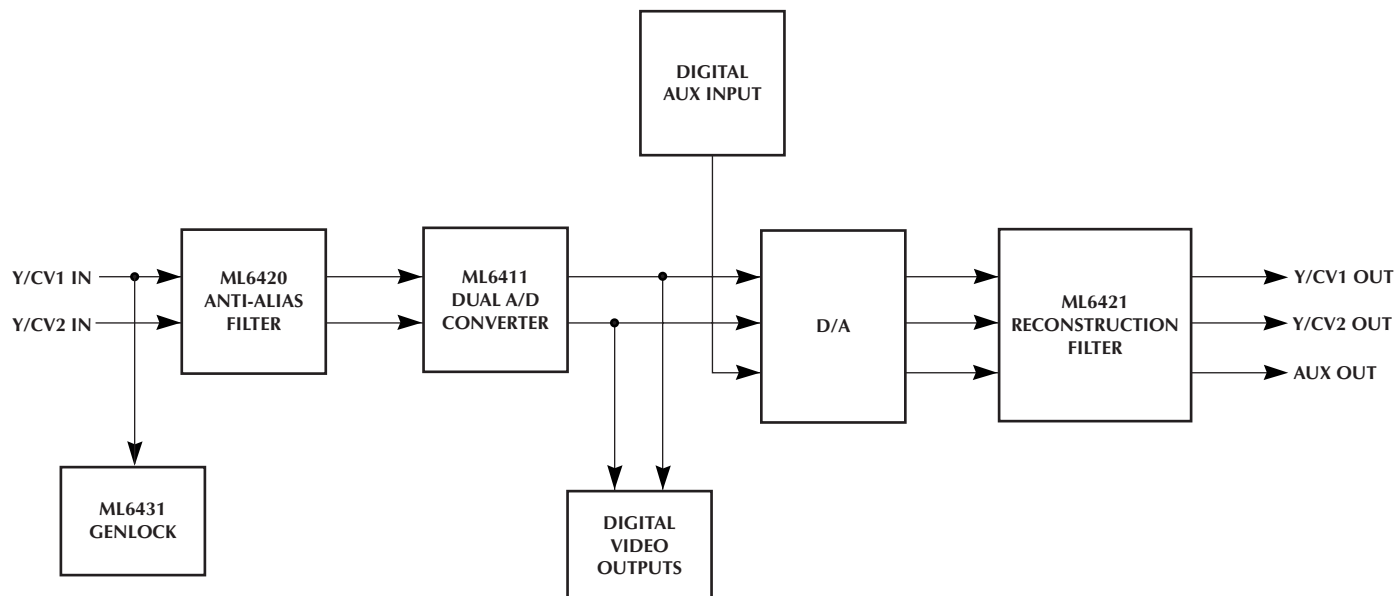


Figure 5. Typical S-video and Composite Video Capture System

## APPLICATION 1: VIDEO EDITING SYSTEMS

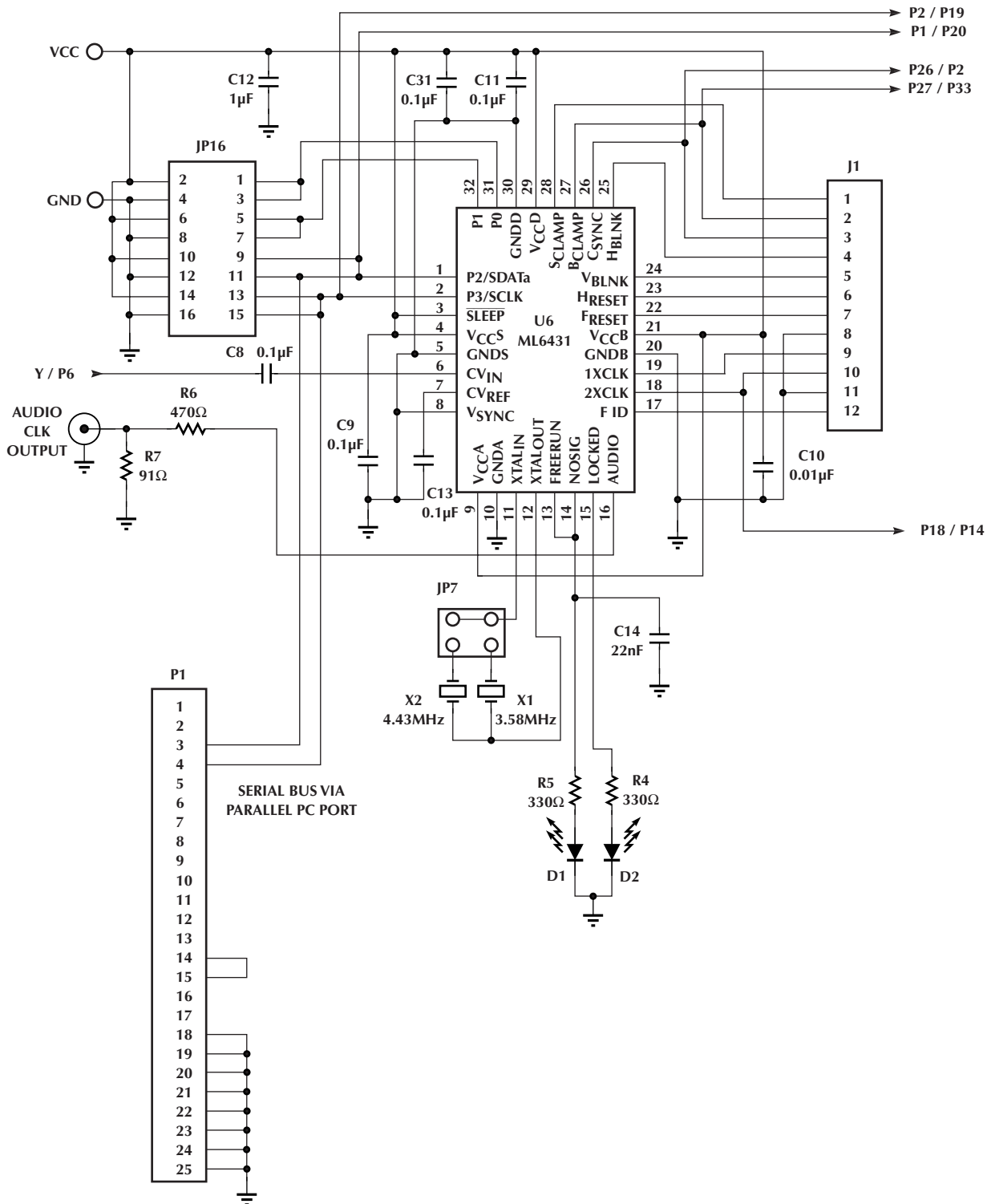


Figure 6 (Page 1 of 3). Application Schematic Detailing Block Diagram of Figure 5

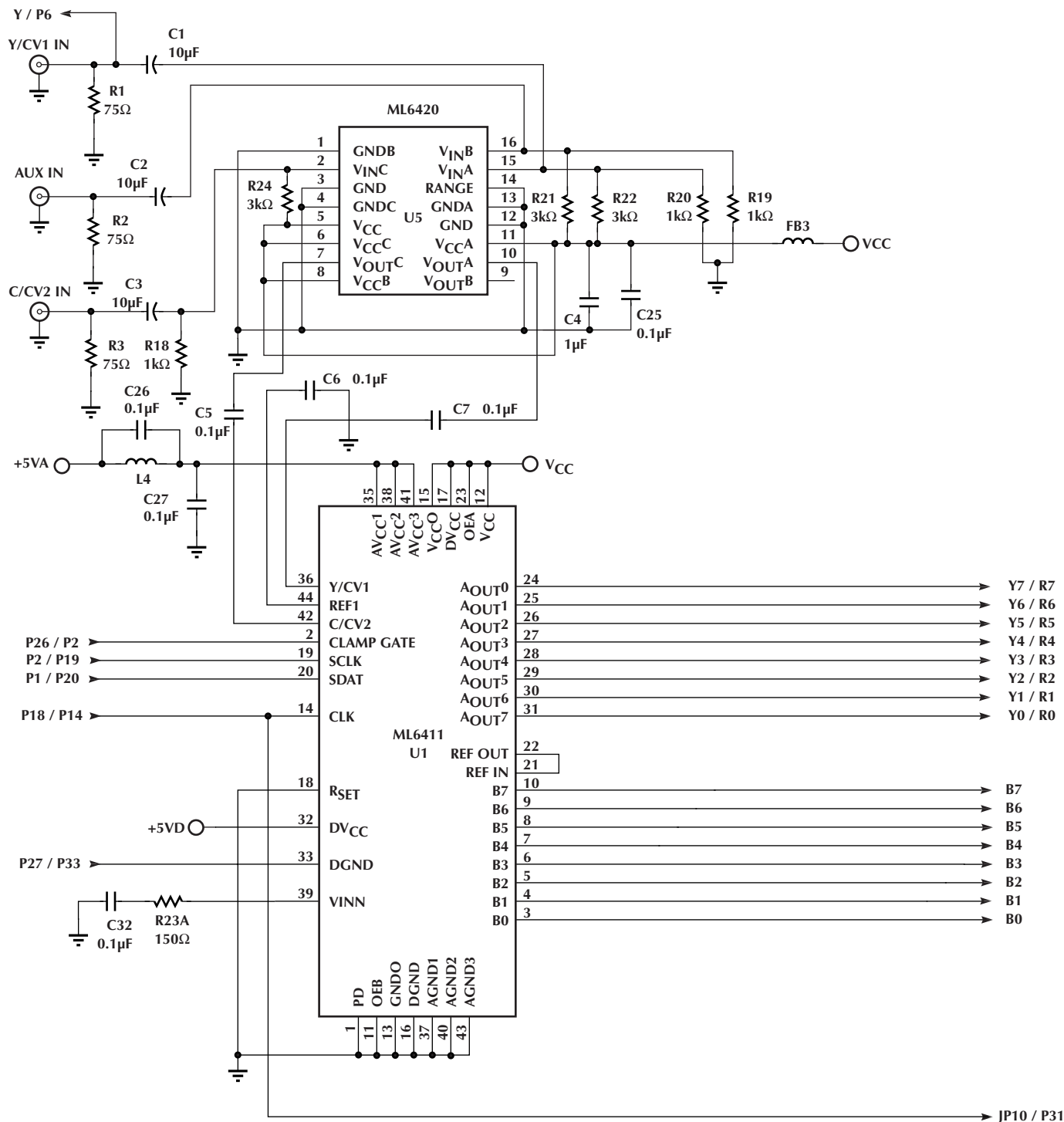


Figure 6 (Page 2 of 3). Application Schematic Detailing Block Diagram of Figure 5

## APPLICATION 1: VIDEO EDITING SYSTEMS

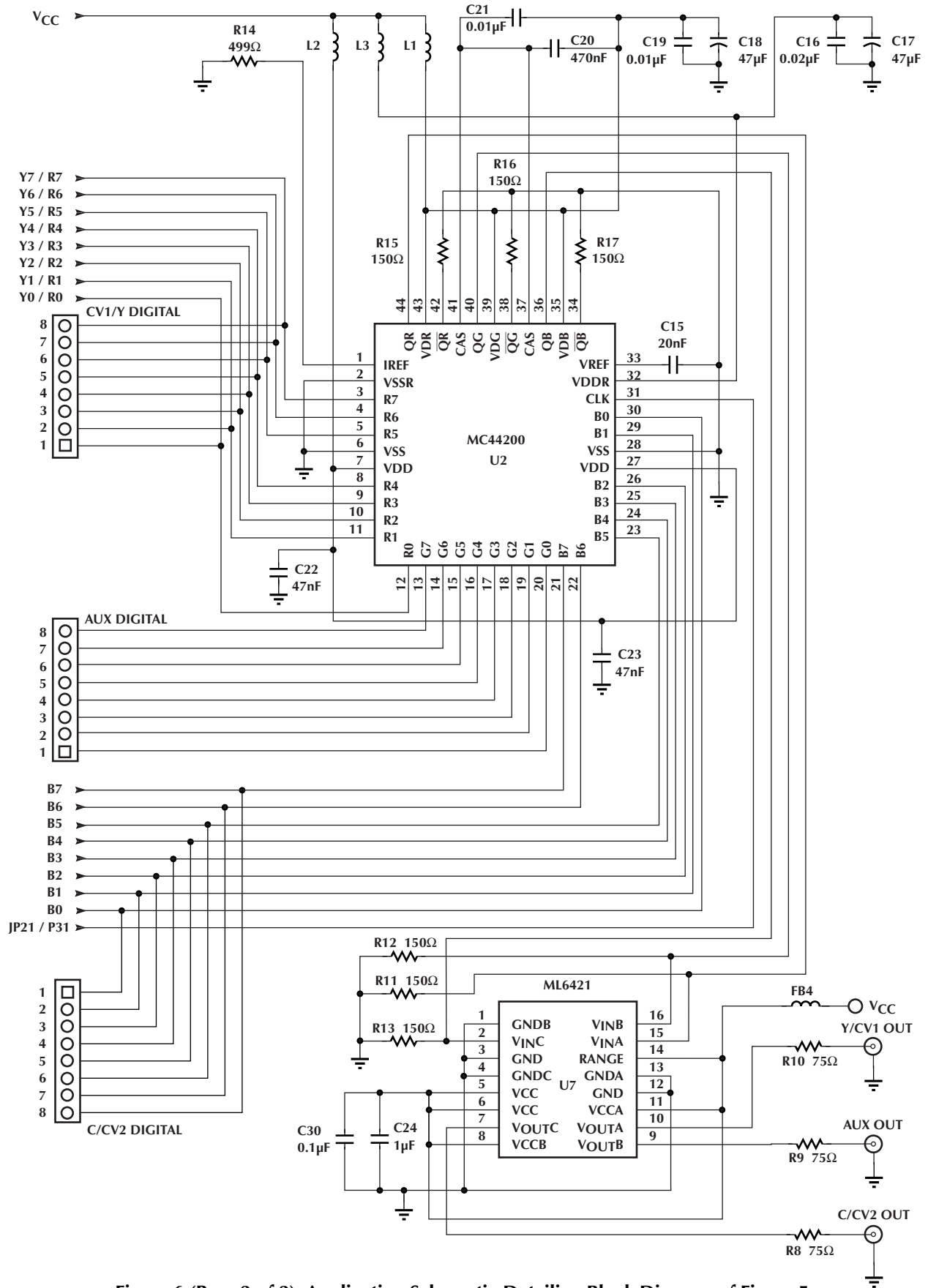
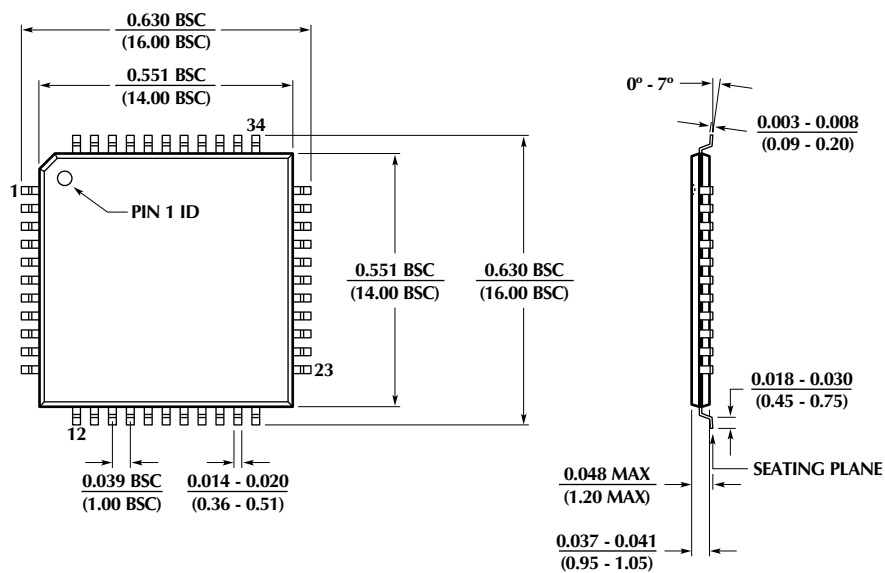


Figure 6 (Page 3 of 3). Application Schematic Detailing Block Diagram of Figure 5

**PHYSICAL DIMENSIONS** inches (millimeters)


**Package: H44-14**  
**44-Pin (14 x 14 x 1mm) TQFP**


## ORDERING INFORMATION

| PART NUMBER | OUTPUT VOLTAGE | TEMPERATURE RANGE | PACKAGE           |
|-------------|----------------|-------------------|-------------------|
| ML6411      |                | 0°C to 70°C       | 44 Pin TQFP (H44) |

### Micro Linear Corporation

2092 Concourse Drive  
San Jose, CA 95131  
Tel: (408) 433-5200  
Fax: (408) 432-0295  
[www.microlinear.com](http://www.microlinear.com)

© Micro Linear 1999.  **Micro Linear** is a registered trademark of Micro Linear Corporation. All other trademarks are the property of their respective owners.

---

Products described herein may be covered by one or more of the following U.S. patents: 4,897,611; 4,964,026; 5,027,116; 5,281,862; 5,283,483; 5,418,502; 5,508,570; 5,510,727; 5,523,940; 5,546,017; 5,559,470; 5,565,761; 5,592,128; 5,594,376; 5,652,479; 5,661,427; 5,663,874; 5,672,959; 5,689,167; 5,714,897; 5,717,798; 5,742,151; 5,747,977; 5,754,012; 5,757,174; 5,767,653; 5,777,514; 5,793,168; 5,798,635; 5,804,950; 5,808,455; 5,811,999; 5,818,207; 5,818,669; 5,825,165; 5,825,223; 5,838,723; 5,844,378; 5,844,941. Japan: 2,598,946; 2,619,299; 2,704,176; 2,821,714. Other patents are pending.

Micro Linear makes no representations or warranties with respect to the accuracy, utility, or completeness of the contents of this publication and reserves the right to make changes to specifications and product descriptions at any time without notice. No license, express or implied, by estoppel or otherwise, to any patents or other intellectual property rights is granted by this document. The circuits contained in this document are offered as possible applications only. Particular uses or applications may invalidate some of the specifications and/or product descriptions contained herein. The customer is urged to perform its own engineering review before deciding on a particular application. Micro Linear assumes no liability whatsoever, and disclaims any express or implied warranty, relating to sale and/or use of Micro Linear products including liability or warranties relating to merchantability, fitness for a particular purpose, or infringement of any intellectual property right. Micro Linear products are not designed for use in medical, life saving, or life sustaining applications.