

# SENSORS

## PYROELECTRIC INFRARED SENSORS

### IRA SERIES



Our pyroelectric infrared sensors exhibit high sensitivity and reliable performance made possible by Murata's ceramic technology.

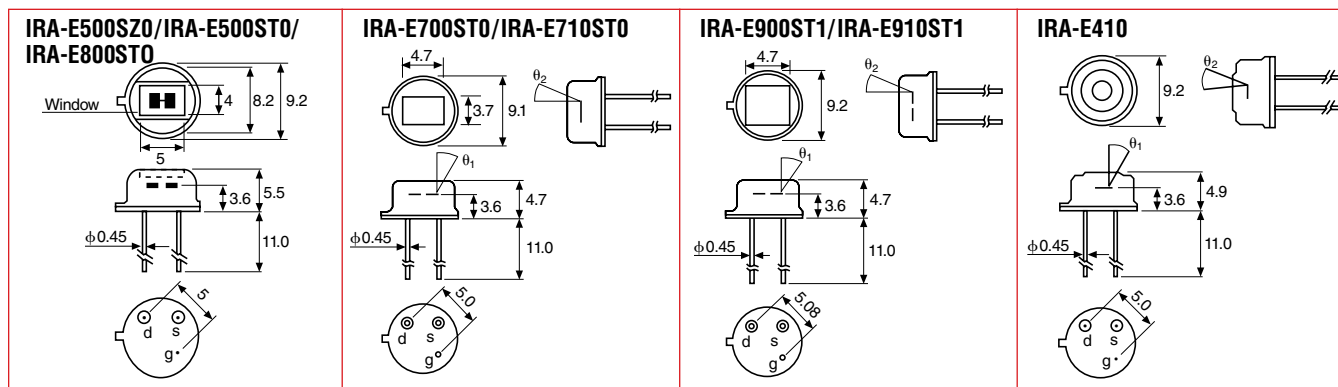
#### FEATURES

- Precisely detects infrared emissions from the human body
- Designed to prevent malfunction due to external light
- E710 and 910 with immunity to RFI
- New gold plated pins

#### APPLICATIONS

- Burglar alarms
- Human detection devices
- Switches
- Lighting appliances
- Household appliances
- Toys
- Measure temperature
- Flame detection

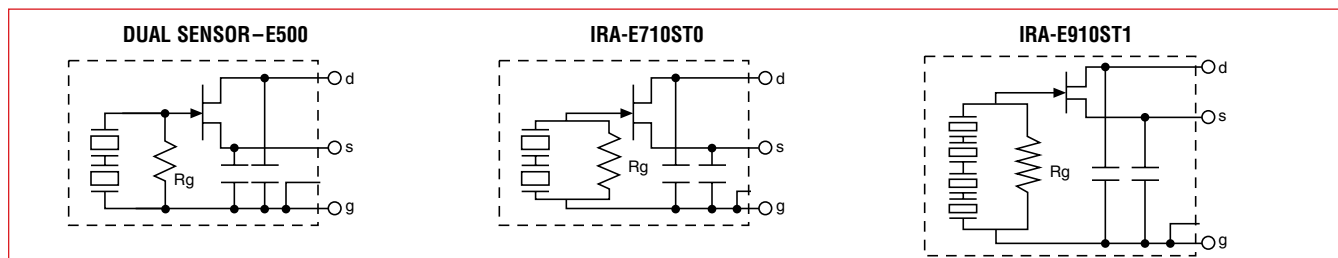
#### DIMENSIONS: mm



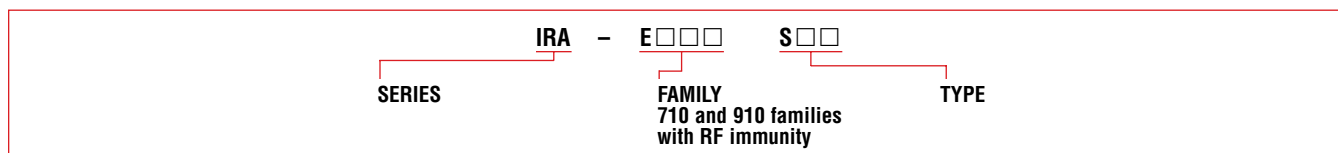
#### SPECIFICATIONS

IRA Family	Part Number	Element Type	Optical Wavelength Range	Field of View	Operating Temperature Range	Applications
E400	IRA-E410QW1	Single	4.3 $\mu$ m band pass	17° x 17°	-25 ~ +55°C	Flame detection
	IRA-E410ST1		5 ~ 20 $\mu$ m high pass			Burglar alarms, light controls
	IRA-E410S1		1 ~ 20 $\mu$ m			Temperature measurement
E500	IRA-E500S20	Dual	7 ~ 14 $\mu$ m	57° x 57°	-40 ~ +70°C	Security, with RFI immunity, lighting appliances, toys
	IRA-E500ST0		5 ~ 14 $\mu$ m long pass			Burglar alarms, appliances, Burglar alarms with RFI immunity
E700	IRA-E700ST0	Dual	5 ~ 14 $\mu$ m long pass	45° x 45°	-40 ~ +70°C	Automatic light control
	IRA-E710ST0					
E800	IRA-E800ST0	Dual	5 $\mu$ m	40° x 40°	-40 ~ +70°C	Automatic light control
E900	IRA-E900ST1	Quad	5 ~ 14 $\mu$ m	41° x 41°	-25 ~ +55°C	Burglar alarms, light control appliances with RFI immunity
	IRA-E910ST1					

#### DIAGRAM



#### PART NUMBERING SYSTEM



For more detailed information regarding this product line in North America, contact us. To receive additional information on Murata Products call 1-800-831-9172.