

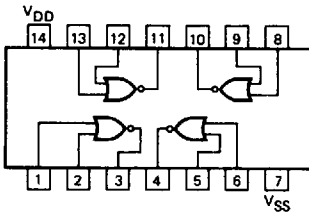
GD4001B

GD4002B

QUAD 2-INPUT NOR GATE • DUAL 4-INPUT NOR GATE

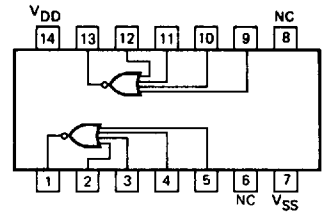
DESCRIPTION – These CMOS logic elements provide the positive input NOR function. The outputs are fully buffered for highest noise immunity and pattern insensitivity of output impedance.

4001B
LOGIC AND CONNECTION DIAGRAM
DIP (TOP VIEW)



NOTE:
The SO Package have the same pinouts (Connection Diagram) as the Dual In-line Package.

4002B
LOGIC AND CONNECTION DIAGRAM
DIP (TOP VIEW)



DC CHARACTERISTICS: V_{DD} as shown, $V_{SS} = 0\text{ V}$

SYMBOL	PARAMETER	LIMITS									UNITS	TEMP	TEST CONDITIONS See Note 1	
		$V_{DD} = 5\text{ V}$			$V_{DD} = 10\text{ V}$			$V_{DD} = 15\text{ V}$						
		MIN	TYP	MAX	MIN	TYP	MAX	MIN	TYP	MAX				
I_{DD}	Quiescent Power Supply Current	XC			1			2			4	μA	MIN, 25°C	All inputs at 0 V or V_{DD}
					7.5			15			30		MAX	
		XM			0.25			0.5			1	μA	MIN, 25°C	
					7.5			15			30		MAX	

AC CHARACTERISTICS: V_{DD} as shown, $V_{SS} = 0\text{ V}$, $T_A = 25^\circ\text{C}$, 4001B only (See Note 2)

SYMBOL	PARAMETER	LIMITS									UNITS	TEST CONDITIONS See Note 2	
		$V_{DD} = 5\text{ V}$			$V_{DD} = 10\text{ V}$			$V_{DD} = 15\text{ V}$					
		MIN	TYP	MAX	MIN	TYP	MAX	MIN	TYP	MAX			
t_{PLH}	Propagation Delay		60	110		25	60		20	48	ns	$C_L = 50\text{ pF}$, $R_L = 200\text{ k}\Omega$	
t_{PHL}			60	110		25	60		20	48	ns		
t_{TLH}	Output Transition Time		60	135		30	70		20	45	ns		Input Transition Times $\leq 20\text{ ns}$
t_{THL}			60	135		30	70		20	45	ns		

AC CHARACTERISTICS: V_{DD} as shown, $V_{SS} = 0\text{ V}$, $T_A = 25^\circ\text{C}$, 4002B only

SYMBOL	PARAMETER	LIMITS									UNITS	TEST CONDITIONS See Note 2	
		$V_{DD} = 5\text{ V}$			$V_{DD} = 10\text{ V}$			$V_{DD} = 15\text{ V}$					
		MIN	TYP	MAX	MIN	TYP	MAX	MIN	TYP	MAX			
t_{PLH}	Propagation Delay		65	110		30	60		20	48	ns	$C_L = 50\text{ pF}$, $R_L = 200\text{ k}\Omega$	
t_{PHL}			70	110		30	60		23	48	ns		
t_{TLH}	Output Transition Time		75	135		40	70		30	45	ns		Input Transition Times $\leq 20\text{ ns}$
t_{THL}			60	135		23	70		15	45	ns		

- NOTES:**
- Additional DC Characteristics are listed in this section under 4000B Series CMOS Family Characteristics.
 - Propagation Delays and Output Transition Times are graphically described in this section under 4000B Series CMOS Family Characteristics.

TYPICAL ELECTRICAL CHARACTERISTICS

