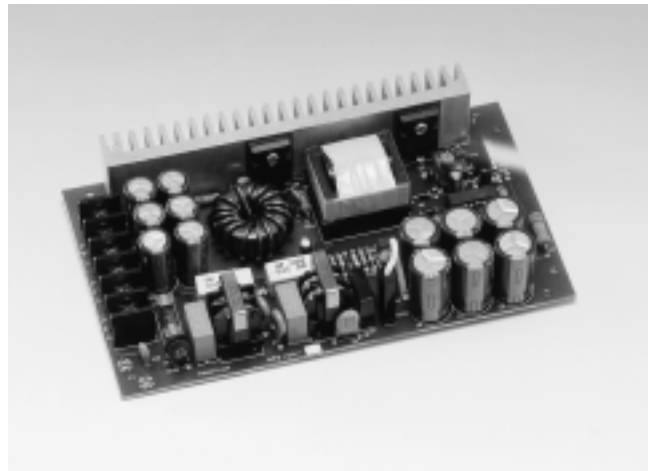


NF 100 Series AC/DC Converters

NF 100

Total Power	100 Watts
Input Voltages	AC 85~132V / 170~265V
# of Outputs	Single



SPECIAL FEATURES

- Cost effective unit
- Small, compact footprint
- High efficiency
- Dual input voltage range (selectable)
- 188kHz fixed frequency
- Built-in EMI filter
- Inrush current limit
- Adjustable output voltage
- Output over current protection
- Output over voltage protection
- Thermal shutdown
- Low output ripple & noise
- Isolated output
- 2 Years warranty

ENVIRONMENTAL

- Operating temperature range..... -10~60°C
- Storage temperature range..... -20~70°C
- Humidity..... 20~90%RH
- Vibration..... 10~55Hz at 2G 3minutes period
- Impact..... 20G for 11ms, once on each X, Y and Z-axis
- Cooling method..... Natural air
- MTBF 1.1 x 10⁵ hrs
- Safety CB standard design
- Noise Meets FCC class B

ELECTRICAL SPECIFICATIONS

- INPUT**
- Voltage AC85~132V (or DC 110~170V), AC170~264V (or DC220~340V)
 - Current 2.3A max. @ 110VAC, 1.2A max. @ 220VAC
 - Frequency 47~440Hz max. (50~60Hz typ.)
 - Efficiency 79% min.
 - Inrush current (At cold start) 30A max. @110VAC, 60A max. @220VAC
 - Leakage current 0.5mA max. @110VAC, 0.75mA max. @220VAC
- OUTPUT**
- Voltage adj. range ±10% typ.
 - Ripple and noise ±1% typ.
 - Line regulation ±1% typ.
 - Static load regulation ±1% typ.
 - Dynamic load regulation ±3% typ.
 - Temperature drift ±1% typ.
 - Rising time 100ms max.
 - Holding time 10ms min.
- PROTECTION CIRCUIT**
- Over current protection Work at over 105% of rating & recovers automatically
 - Over voltage protection 115~140% max.
 - Over temperature protection 140°C typ.
- ELECTRICALLY ISOLATED**
- Input - Output AC 3kV, 1 minute, 10mA DC 500V, 100MOhms min.
 - Input - FG AC 2kV, 1 minute, 10mA DC 500V, 100MOhms min.
 - Output - FG AC 0.5kV, 1 minute, 10mA DC 500V, 70MOhms min.

Ordering Information

Input	Output 1	Output 2	Output 3	Maximum Power	Ripple & Noise (mVp-p)	Efficiency typ.	Model number
AC85~132V /170~264V OR DC110~170V/220~340V	5V @20A			100.0W	50	79%	NFS100-5
	12V @8.4A			100.4W	120	80%	NFS100-12
	15V @6.7A			100.5W	150	80%	NFS100-15
	24V @4.2A			100.8W	240	80%	NFS100-24

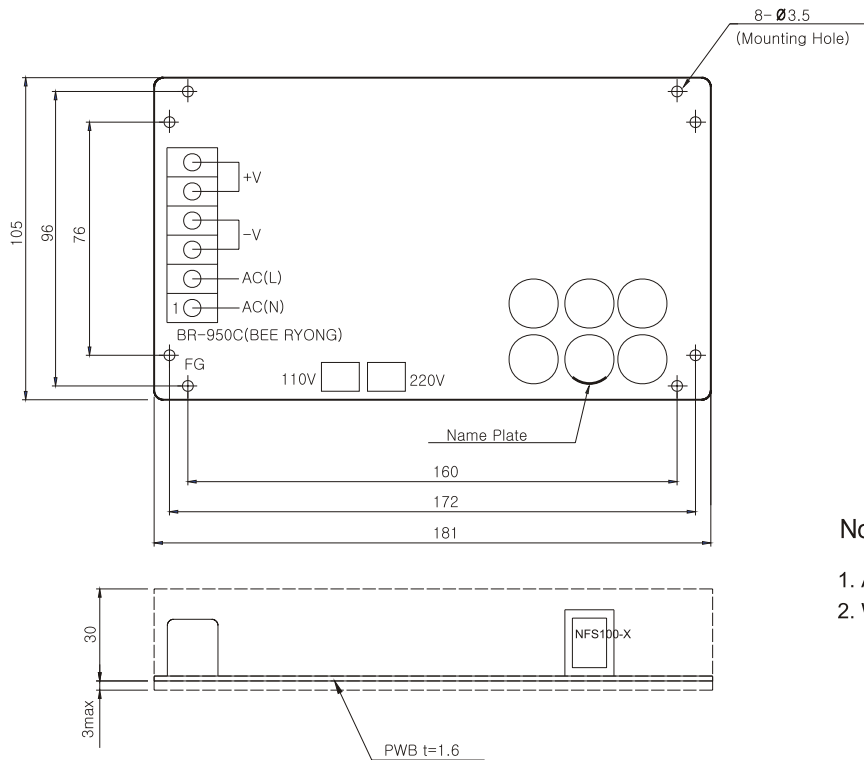
Mating connectors

Name	I/O Connector
CN 1	BR950C-6P

Pin assignments

Connector	Pin assi.
CN 1	1. AC(N) 2. AC(L) 3. Gnd 4. Gnd 5. Output 1 6. Output 1

Dimensions



Notes

1. All dimensions are mm
2. Weight : 460g or less