

# 8-bit Proprietary Microcontroller

CMOS

## F<sup>2</sup>MC-8L MB89201 Series

### MB89201/N201/V201

#### ■ DESCRIPTION

The MB89201 series is a line of single-chip microcontrollers. In addition to a compact instruction set, the microcontrollers contain a variety of peripheral functions such, timers, a serial interface, an A/D converter and an external interrupt.

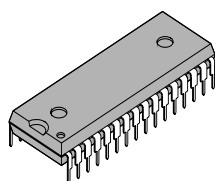
#### ■ FEATURES

- MB89600 Series CPU core
- Maximum memory space : 64 Kbytes
- Minimum execution time : 0.32  $\mu$ s/12.5 MHz
- Interrupt processing time : 2.88  $\mu$ s/12.5 MHz
- I/O ports : max. 27channels
- 21-bit timebase timer
- 8-bit PWM timer
- 8/16-bit capture timer/counter
- 10-bit A/D converter : 8 channels
- UART
- 8-bit serial I/O
- External interrupt 1 : 3 channels
- External interrupt 2 : 8 channels
- Wild Register : 2 bytes
- Multi-time programmable flash (MTP flash) Read protection

(Continued)

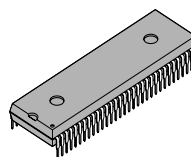
#### ■ PACKAGES

32-pin plastic SHDIP



(DIP-32P-M06)

64-pin plastic SHDIP



(DIP-64P-M01)

# MB89201 Series

(Continued)

- Low-power consumption modes ( sleep mode, and stop mode)
- SHDIP-32 package
- CMOS Technology

## ■ PRODUCT LINEUP

Part number Parameter	MB89201	MB89N201	MB89V201
Classification	Mask ROM product	Multi-time programmable flash product (read protection)	Evaluation product (for development)
ROM size	16 K × 8 bits (internal mask ROM)	16 K × 8 bits (internal flash)	32K x 8-bit (external EPROM)
RAM size	512 × 8 bits		
CPU functions	Number of instructions : 136 Instruction bit length : 8 bits Instruction length : 1 to 3 bytes Data bit length : 1, 8, 16 bits Minimum execution time : 0.32 μs to 5.1 μs (12.5 MHz) Interrupt processing time : 2.88 μs to 46.1 μs (12.5 MHz)		
Ports	General-purpose I/O ports (CMOS) : 27 (also serve as peripherals ) (5 ports are also an N-ch open-drain type.)		
21-bit time base timer	21-bit Interrupt cycle : 0.66 ms, 2.64 ms, 21 ms, or 335.5 ms with 12.5-MHz main clock		
Watching timer	Reset generation cycle : 335.5 ms minimum with 12.5-MHz main clock		
8-bit PWM timer	8-bit interval timer operation (square output capable, operating clock cycle : 0.32 μs , 2.56 μs, 5.1 μs, 20.5 μs) 8-bit resolution PWM operation (conversion cycle : 81.9 μs to 21.47 s : in the selection of internal shift clock of 8/16-bit capture timer) Count clock selectable between 8-bit and 16-bit timer/counter outputs		
8/16-bit capture, timer/counter	8-bit capture timer/counter × 1 channel + 8-bit timer or 16-bit capture timer/counter × 1 channel Capable of event count operation and square wave output using external clock input with 8-bit timer 0 or 16-bit counter		
UART	Transfer data length : 6/7/8 bits		
8-bit Serial I/O	8 bits LSB first/MSB first selectable One clock selectable from four operation clocks (one external shift clock, three internal shift clocks : 0.8 μs, 6.4 μs, 25.6 μs)		
12-bit PPG timer	Output frequency : Pulse width and cycle selectable		
External interrupt 1 (wake-up function)	3 channels (Interrupt vector, request flag, request output enabled) Edge selectable (Rising edge, falling edge, or both edges) Also available for resetting stop/sleep mode (Edge detectable even in stop mode)		
External interrupt 2 (wake-up function)	1 channel with 8 inputs (Independent L-level interrupt and input enable) Also available for resetting stop/sleep mode (Level detectable even in stop mode)		

(Continued)

(Continued)

Part number Parameter	MB89201	MB89N201	MB89V201
10-bit A/D converter	10-bit precision × 8 channels A/D conversion function (Conversion time : 12.16 μs/12.5 MHz) Continuous activation by 8/16-bit timer/counter output or time-base timer counter		
Wild Register	8-bit × 2		
Standby mode	Sleep mode, and Stop mode		
Overhead time from reset to the first instruction execution	Powr-on reset : Oscillation settling time*1 External reset : a few μs Software reset : a few μs	Powr-on reset : Voltage regulator and oscillation settling time (31.5 ms/12.5 MHz) External reset : Oscillation settling time (21.0 ms/12.5 MHz) Software reset : a few μs	Powr-on reset : Oscillation settling time (21.0 ms/12.5 MHz) External reset : Oscillation settling time (21.0 ms/12.5 MHz) Software reset : a few μs
Power supply Voltage*2	2.2 V to 5.5 V	3.5 V to 5.5 V	2.7 V to 5.5 V

\*1 : Check section “■ MASK OPTIONS”

\*2 : The minimum operating voltage varies with the operating frequency, the function, and the connected ICE.

## ■ PACKAGE AND CORRESPONDING PRODUCTS

Package	MB89201	MB89N201	MB89V201
DIP-32P-M06	○	○	×
DIP-64P-M01	×	×	○ *

○ : Available    × : Not available

\* : Adapter for 64-pin to 32-pin conversion (manufactured by)

Part number :

Inquiry:

## ■ DIFFERENCES AMONG PRODUCTS

### 1. Memory Size

Before evaluating using the evaluation product, verify its differences from the product that will actually be used.

### 2. Current Consumption

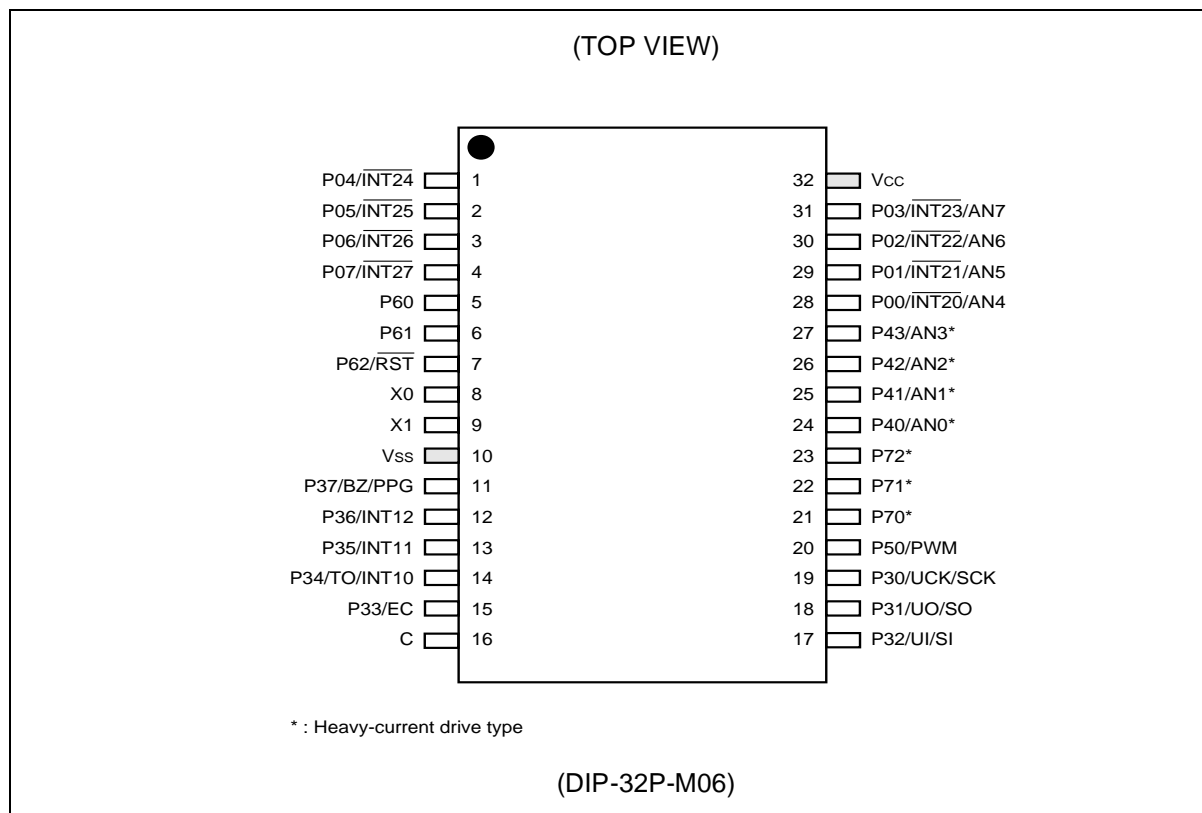
In the case of the MB89V201, add the current consumed by the EPROM which is connected to the adapter socket.

### 3. Mask Options

Functions that can be selected as options and how to designate these options vary by the product. Before using options check section “■ MASK OPTIONS”.

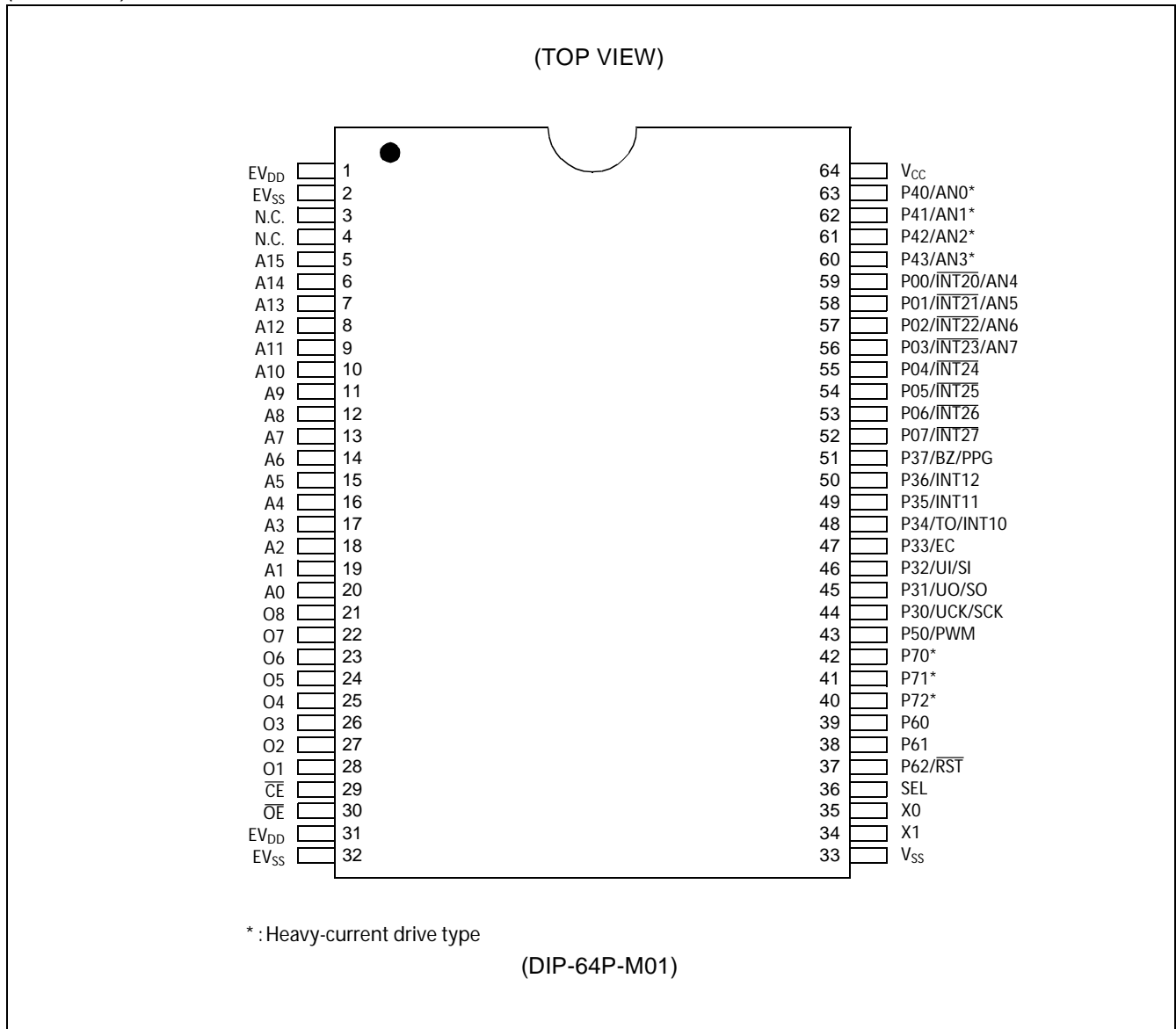
# MB89201 Series

## ■ PIN ASSIGNMENT



(Continued)

(Continued)



N.C. : Internally connected. Do not use.

# MB89201 Series

## ■ PIN DESCRIPTION

Pin No.		Pin name	Circuit type	Function
SHDIP32*1	SHDIP64*2			
8	35	X0	A	Pins for connecting the crystal for the main clock. To use an external clock, input the signal to X0 and leave X1 open.
9	34	X1		
5	39	P60	H	General-purpose CMOS input port.
6	38	P61	H	General-purpose CMOS input port
7	37	P62/ $\overline{\text{RST}}$	C	Reset I/O pin / General-purpose CMOS I/O port (selectable by metal option for MB89201/N201; selectable by SEL input for MB89V201). This pin serves as an N-channel open-drain output with pull-up resistor and a input as well. The reset is a hysteresis input. If the pin is selected to be reset I/O pin, then it outputs the “L” signal in response to an internal reset request. Also, it initializes the internal circuit upon input of the “L” signal.
—	36	SEL	—	MB89V201 P62/ $\overline{\text{RST}}$ selection input. If SEL is pullup, then P62/ $\overline{\text{RST}}$ pin act as $\overline{\text{RST}}$ function; If SEL is pulldown, then P62/ $\overline{\text{RST}}$ pin act as P62 function;
28 to 31	59 to 56	P00/ $\overline{\text{INT20}}$ /AN4 to P03/ $\overline{\text{INT23}}$ /AN7	G	General-purpose CMOS I/O ports. These pins also serve as an input (wake-up input) of external interrupt 2 or as an A/D converter analog input. The input of external interrupt 2 is a hysteresis input.
1 to 4	55 to 52	P04/ $\overline{\text{INT24}}$ to P07/ $\overline{\text{INT27}}$	D	General-purpose CMOS I/O ports. These pins also serve as an input (wake-up input) of external interrupt 2. The input of external interrupt 2 is a hysteresis input.
19	44	P30/U $\overline{\text{CK}}$ /SCK	B	General-purpose CMOS I/O ports. This pin also serves as the clock I/O pin for the UART or 8-bit serial I/O. The resource is a hysteresis input.
18	45	P31/UO/SO	E	General-purpose CMOS I/O ports. This pin also serves as the data output pin for the UART or 8-bit serial I/O.
17	46	P32/UI/SI	B	General-purpose CMOS I/O ports. This pin also serves as the data input pin for the UART or 8-bit serial I/O. The resource is a hysteresis input.
15	47	P33/EC	B	General-purpose CMOS I/O ports. This pin also serves as the external clock input pin for the 8/16-bit capture timer/counter. The resource is a hysteresis input.
14	48	P34/TO/INT10	B	General-purpose CMOS I/O ports. This pin also serves as the output pin for the 8/16-bit capture timer/counter or as the input pin for external interrupt 1. The resource is a hysteresis input.
13, 12	49, 50	P35/INT11, P36/INT12	B	General-purpose CMOS I/O ports. These pins also serve as the input pin for external interrupt 1. The resource is a hysteresis input.

(Continued)

\*1 : DIP-32P-M06

\*2 : DIP-64P-M01

# MB89201 Series

(Continued)

Pin No.		Pin name	Circuit type	Function
SHDIP*1	SHDIP*2			
11	51	P37/BZ/PPG	E	General-purpose CMOS I/O ports. This pin also serves as the buzzer output pin or the 12-bit programmable pulse generator output.
20	43	P50/PWM	E	General-purpose CMOS I/O ports. This pin also serves as the 8-bit PWM output pin.
24 to 27	63 to 60	P40/AN0 to P43/AN3	F	General-purpose CMOS I/O ports. These pins can also be used as N-channel open-drain ports. These pins also serve as A/D converter analog input pins.
32	64	V <sub>CC</sub>	—	Power supply pin
10	33	V <sub>SS</sub>	—	Power (GND) pin
21	42	P70	E	General-purpose CMOS I/O ports.
22 to 23	41 to 40	P71 to P72	E	General-purpose CMOS I/O ports.
16	—	C	—	MB89N201: Capacitance pin for regulating the power supply. Connect an external ceramic capacitor of about 0.1 $\mu$ F. MB89201: This pin is not internally connected. It is unnecessary to connect a capacitor.

\*1 : DIP-32P-M06

\*2 : DIP-64P-M01

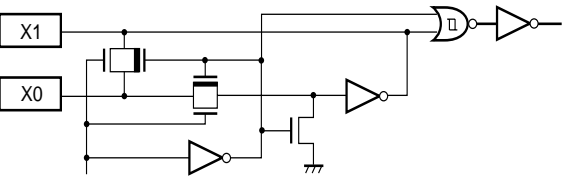
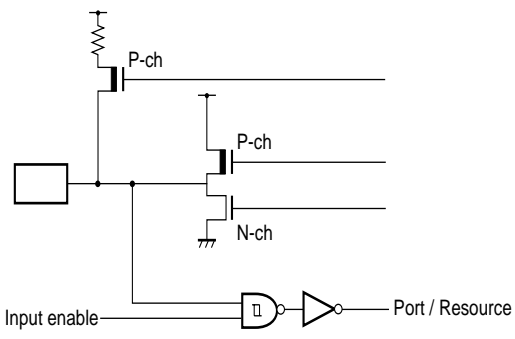
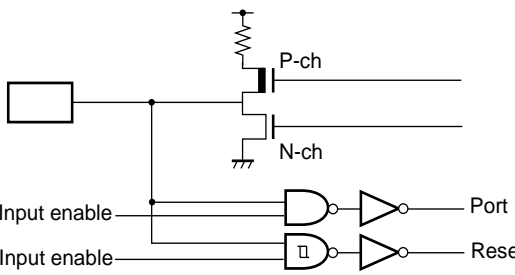
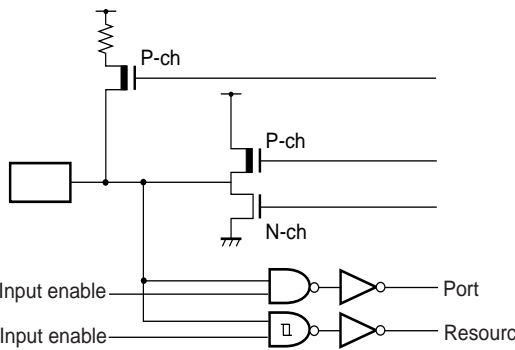
# MB89201 Series

## ■ EXTERNAL EPROM PIN DESCRIPTION (MB89V201 only)

Pin No.	Pin name	I/O	Function
1, 31	$EV_{DD}$	O	EPROM power supply pin
2, 32	$EV_{SS}$	O	EPROM power supply (GND) pin
5 to 20	A15 to A0	O	Address output pins
21 to 28	O8 to O1	I	Data input pins
29	$\overline{CE}$	O	ROM chip enable pin Outputs "H" during standby.
30	$\overline{OE}$	O	ROM output enable pin Outputs "L" at all times.
3, 4	N.C.	—	Internally connected pins Be sure to leave them open.



## I/O CIRCUIT TYPE

Type	Circuit	Remarks
A	 <p>Standby control signal</p>	<ul style="list-style-type: none"> <li>At an oscillation feedback resistance of approximately 500 kΩ</li> </ul>
B	 <p>Input enable</p> <p>Port / Resource</p>	<ul style="list-style-type: none"> <li>CMOS output</li> <li>Hysteresis input</li> <li>Pull-up resistor optional</li> </ul>
C	 <p>Input enable</p> <p>Input enable</p> <p>Port</p> <p>Reset</p>	<ul style="list-style-type: none"> <li>At an output pull-up resistor (P-ch) of approximately 50 kΩ/5.0 V</li> <li>N-ch open-drain output available</li> <li>CMOS input</li> <li>Hysteresis input (Reset input)</li> </ul>
D	 <p>Input enable</p> <p>Input enable</p> <p>Port</p> <p>Resource</p>	<ul style="list-style-type: none"> <li>CMOS output</li> <li>CMOS input</li> <li>Hysteresis input (Resource input)</li> <li>Pull-up resistor optional</li> </ul>

(Continued)

# MB89201 Series

(Continued)

Type	Circuit	Remarks
E		<ul style="list-style-type: none"> <li>• CMOS output</li> <li>• CMOS input</li> <li>• Pull-up resistor optional</li> <li>• P70-P72 are heavy-current drive type</li> </ul>
F		<ul style="list-style-type: none"> <li>• CMOS output</li> <li>• CMOS input</li> <li>• Analog input</li> <li>• N-ch open-drain output available</li> <li>• P40-P43 are heavy-current drive type</li> </ul>
G		<ul style="list-style-type: none"> <li>• CMOS output</li> <li>• CMOS input</li> <li>• Hysteresis input (Resource input)</li> <li>• Analog input</li> </ul>
H		<ul style="list-style-type: none"> <li>• CMOS input</li> </ul>

## ■ HANDLING DEVICES

### 1. Preventing Latchup

Latchup may occur on CMOS ICs if voltage higher than  $V_{CC}$  or lower than  $V_{SS}$  is applied to input and output pins other than medium- and high-voltage pins or if higher than the voltage which shows on “1. Absolute Maximum Ratings” in section “■ ELECTRICAL CHARACTERISTICS” is applied between  $V_{CC}$  and  $V_{SS}$ .

When latchup occurs, power supply current increases rapidly and might thermally damage elements. When using, take great care not to exceed the absolute maximum ratings.

Also, take care to prevent the analog input from exceeding the digital power supply ( $V_{CC}$ ) when the analog system power supply is turned on and off.

### 2. Treatment of Unused Input Pins

Leaving unused input terminals open may lead to permanent damage due to malfunction and latchup; pull up or pull down the terminals through the resistors of 2 k $\Omega$  or more.

Make the unused I/O terminal in a state of output and leave it open and if it is in an input state, handle it with the same procedure as the input terminals.

### 3. Treatment of N.C. Pins

Be sure to leave (internally connected) N.C. pins open.

### 4. Power Supply Voltage Fluctuations

Although  $V_{CC}$  power supply voltage is assured to operate within the rated range, a rapid fluctuation of the voltage could cause malfunctions, even if it occurs within the rated range. Stabilizing voltage supplied to the IC is therefore important. As stabilization guidelines, it is recommended to control power so that  $V_{CC}$  ripple fluctuations (P-P value) will be less than 10% of the standard  $V_{CC}$  value at the commercial frequency (50 to 60 Hz) and the transient fluctuation rate will be less than 0.1 V/ms at the time of a momentary fluctuation such as when power is switched.

### 5. Precautions when Using an External Clock

When an external clock is used, oscillation stabilization time is required even for power-on reset (optional) and wake-up from stop mode.

### 6. About the Wild Register Function

No wild register can be debugged on the MB89V201. For the operation check, test the MB89N201 installed on a target system.

### 7. Program Execution in RAM

When the MB89V201 is used, no program can be executed in RAM.

### 8. Note to Noise in the External Reset Pin ( $\overline{RST}$ )

If the reset pulse applied to the external reset pin ( $\overline{RST}$ ) does not meet the specifications, it may cause malfunctions. Use caution so that the reset pulse less than the specifications will not be fed to the external reset pin ( $\overline{RST}$ ).

### 9. Cautions for the product that does not contain External Reset Pin ( $\overline{RST}$ )

For the product that select P62 instead of  $\overline{RST}$  pin by mask option, the only way to initialize the device is by power on reset. If the power supply rise / cutoff time does not meet the specifications, then power on reset cannot be generated, and the device become unusable.

# MB89201 Series

## ■ PROGRAMMING AND ERASE FLASH MEMORY ON THE MB89N201

### 1. Flash Memory

The flash memory is located between C000<sub>H</sub> and FFFF<sub>H</sub> in the CPU memory map and incorporates a flash memory interface circuit that allows read access and program access from the CPU to be performed in the same way as mask ROM. Programming and erasing flash memory is also performed via the flash memory interface circuit by executing instructions in the CPU. This enables the flash memory to be updated in place under the control of the CPU, providing an efficient method of updating program and data.

### 2. Flash Memory Features

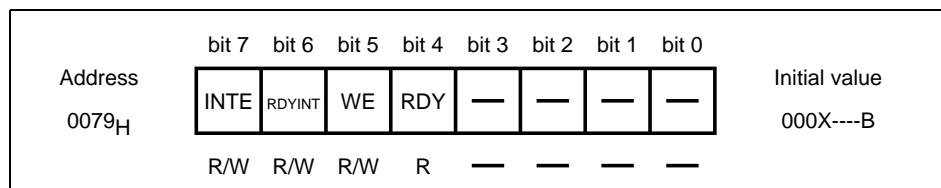
- 16 K byte×8-bit configuration
- Automatic programming algorithm (Embedded algorithm\*)
- Includes an erase pause and restart function
- Data polling and toggle bit for detection of program/erase completion
- Detection of program/erase completion via CPU interrupt
- Compatible with JEDEC-standard commands
- No. of program/erase cycles : Minium 100; Maxium 1,000

\* : Embedded Algorithm is a trademark of Advanced Micro Devices.

### 3. Procedure for Programming and Erasing Flash Memory

Programming and reading flash memory cannot be performed at the same time. Accordingly, to program or erase flash memory, the program must first be copied from flash memory to RAM so that programming can be performed without program access from flash memory.

### 4. Flash Memory Control Status Register (FMCS)



### 5. Memory Space

The memory space for the CPU access and for the parallel flash programmer access is listed below.

Memory size	CPU address	Programmer address
16 K bytes	FFFF <sub>H</sub> to C000 <sub>H</sub>	3FFF <sub>H</sub> to 0000 <sub>H</sub>

### 6. Flash Programmer Adaptor and Recommended Flash Programmers

Part number	Package	Adaptor Part number	Programmer Part number
MB89N201-PSH	DIP-32P-M06	MB91919-607	MB91919-001

Contact information :

- Fujitsu Microelectronics Asia Pte Ltd. : TEL (65)-2810770

### 7. Flash Content Protection

Flash content can be read using serial programmer if the flash content protection mechanism is not activated.

One predefined area of the flash (FFFC<sub>H</sub>) is assigned to be used for preventing the read access of flash content. If the protection code "01<sub>H</sub>" is written in this address (FFFC<sub>H</sub>), the flash content cannot be read by any serial programmer.

Note : The program written into the flash cannot be verified once the flash protection code is written ("01<sub>H</sub>" in FFFC<sub>H</sub>). It is advised to write the flash protection code at last.

## ■ PROGRAMMING TO THE EPROM WITH EVALUATION DEVICE

### 1. EPROM for Use

MBM27C256A-20TVM

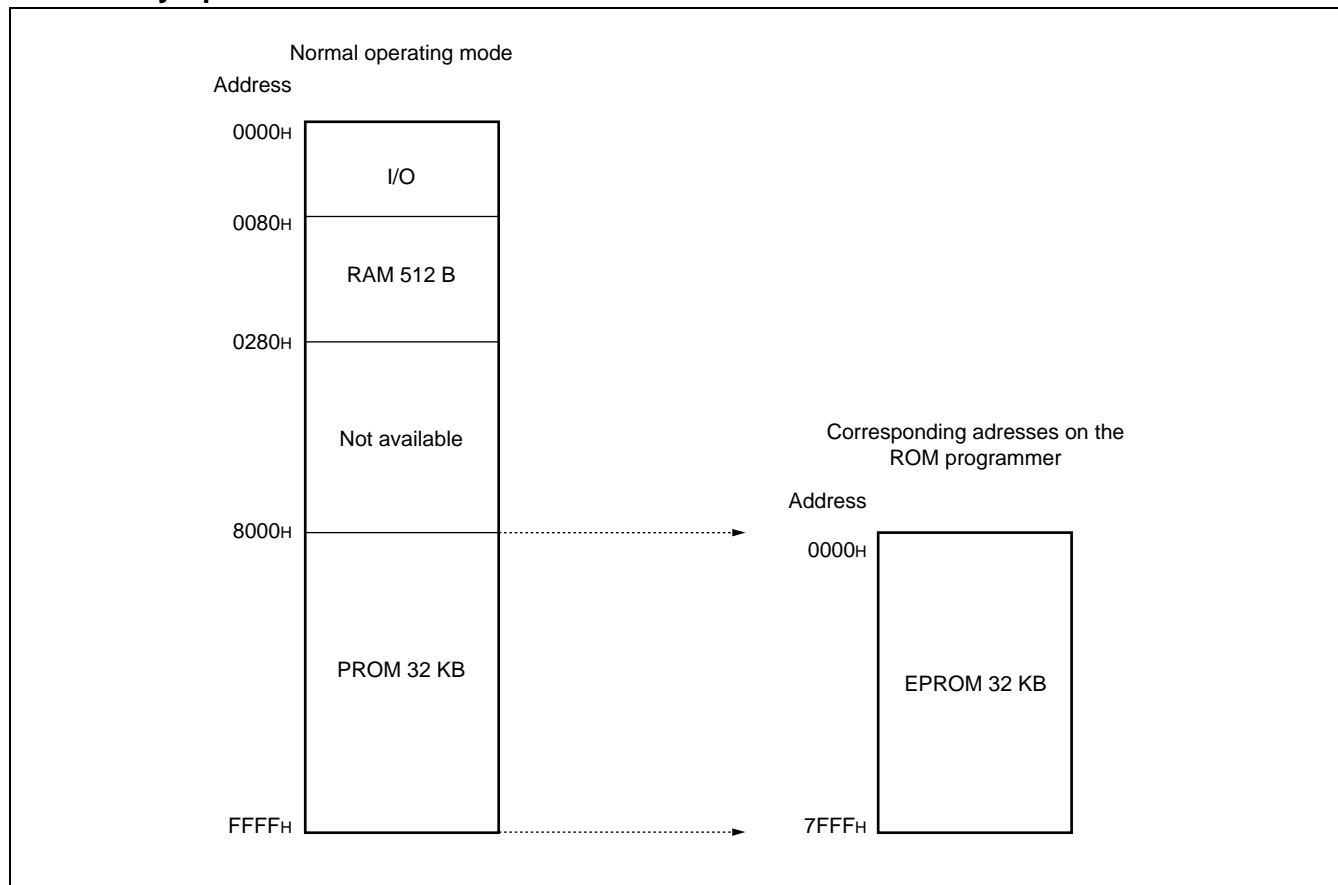
### 2. Programming Socket Adapter

To program to the PROM using an EPROM programmer, use the socket adapter (manufacturer : Sun Hayato Co., Ltd.) listed below.

Package	Compatible socket part number
LCC-32	ROM-32LC-28DP-S

Inquiry : Sun Hayato Co., Ltd. : TEL (81) -3-3986-0403  
FAX (81) -3-5396-9106

### 3. Memory Space.

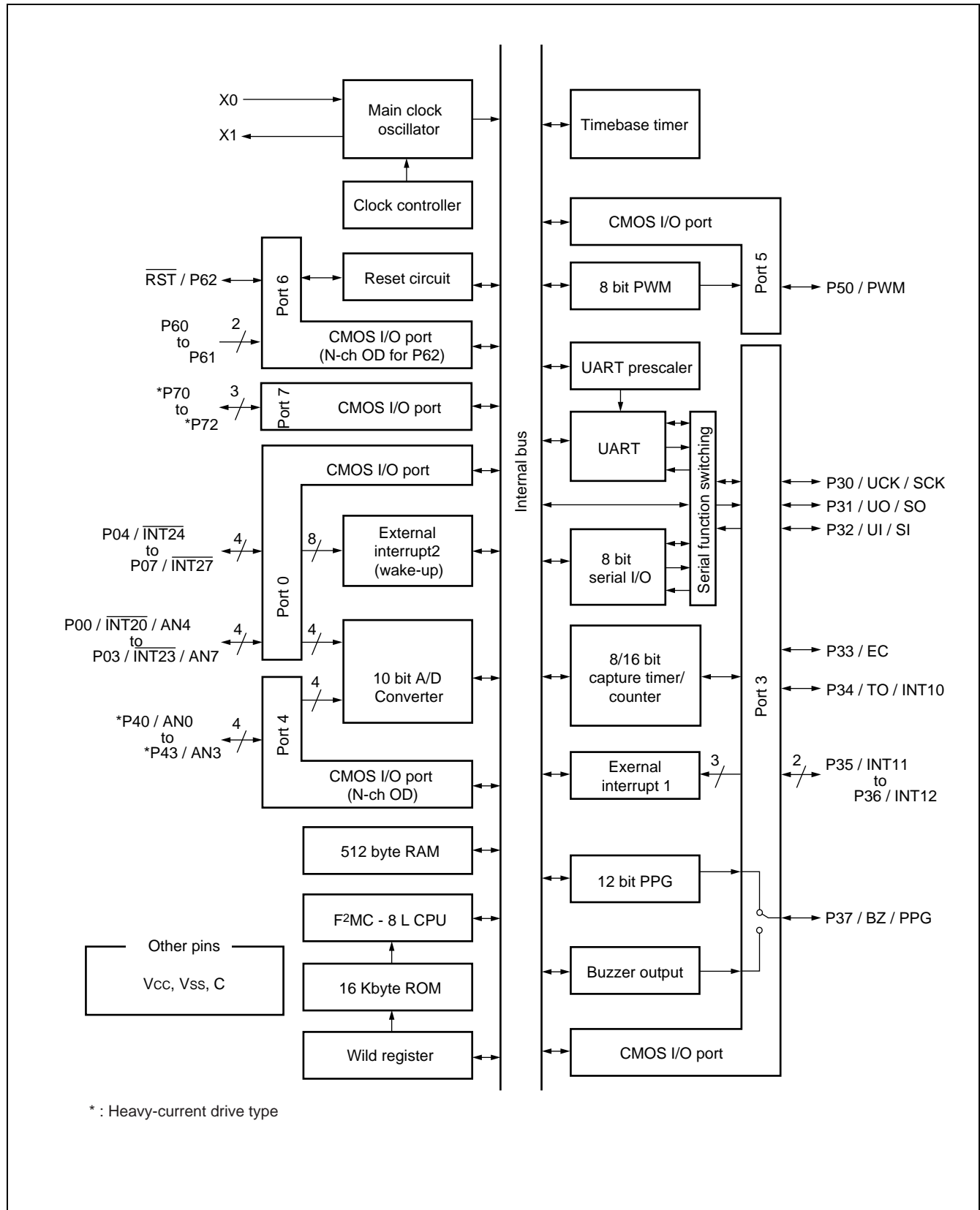


### 4. Programming to the EPROM

- (1) Set the EPROM programmer to the MBM27C256A.
- (2) Load program data into the EPROM programmer at 0000H to 7FFFH.
- (3) Program to 0000H to 7FFFH with the EPROM programmer.

# MB89201 Series

## ■ BLOCK DIAGRAM

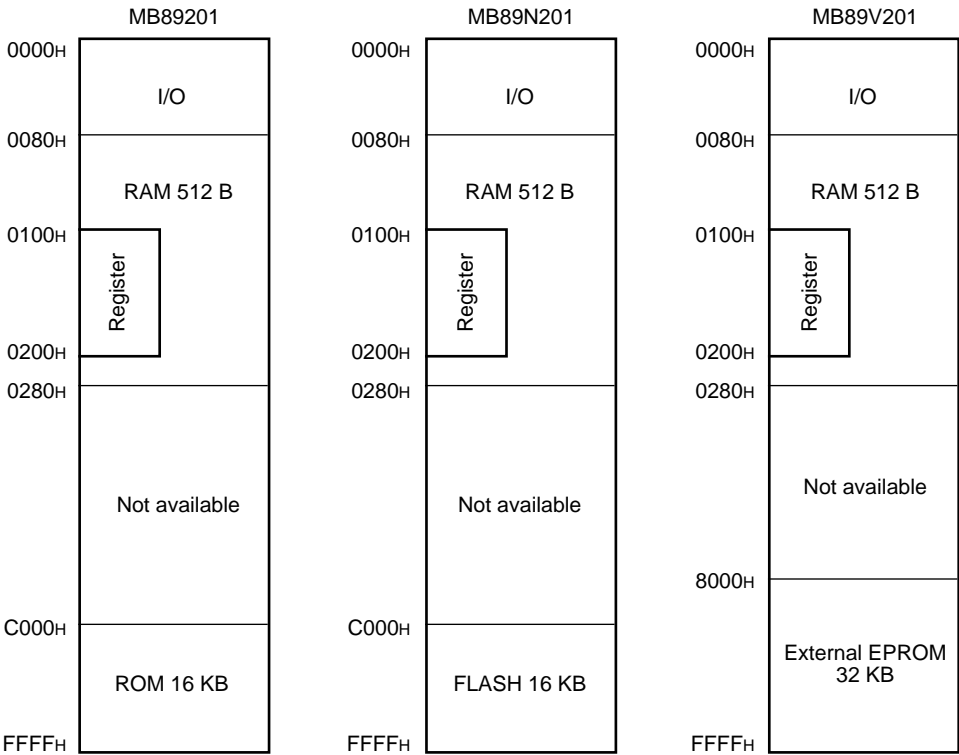


## ■ CPU CORE

### 1. Memory Space

The microcontrollers of the MB89201 series offer a memory space of 64 Kbytes for storing all of I/O, data, and program areas. The I/O area is located at the lowest address. The data area is provided immediately above the I/O area. The data area can be divided into register, stack, and direct areas according to the application. The program area is located at exactly the opposite end, that is, near the highest address. Provide the tables of interrupt reset vectors and vector call instructions toward the highest address within the program area. The memory space of the MB89201 series is structured as illustrated below.

#### • Memory Space



# MB89201 Series

## 2. Registers

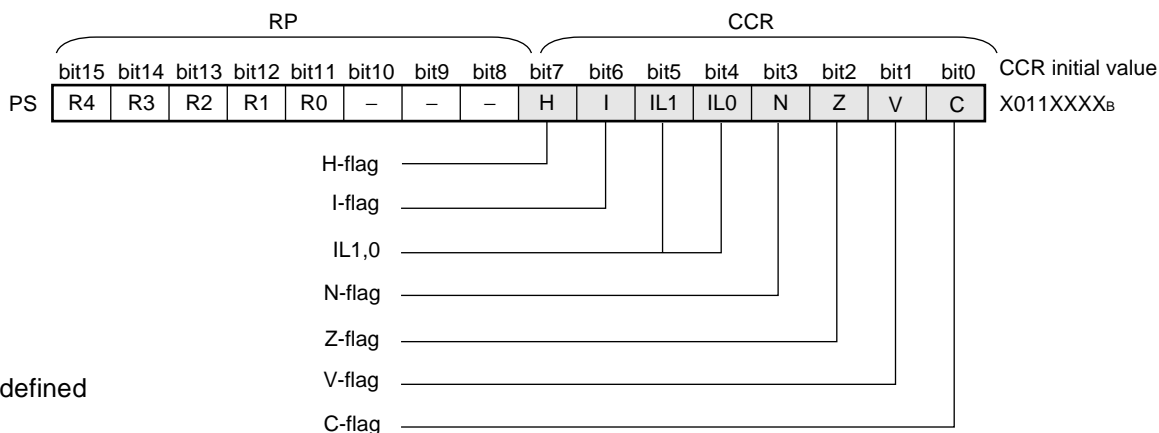
The MB89201 series has two types of registers; dedicated registers in the CPU and general-purpose registers in the memory. The following dedicated registers are provided :

Program counter (PC) :	A 16-bit register for indicating instruction storage positions
Accumulator (A) :	A 16-bit temporary register for storing arithmetic operations, etc. When the instruction is an 8-bit data processing instruction, the lower byte is used.
Temporary accumulator (T) :	A 16-bit register which performs arithmetic operations with the accumulator When the instruction is an 8-bit data processing instruction, the lower byte is used.
Index register (IX) :	A 16-bit register for index modification
Extra pointer (EP) :	A 16-bit pointer for indicating a memory address
Stack pointer (SP) :	A 16-bit register for indicating a stack area
Program status (PS) :	A 16-bit register for storing a register pointer, a condition code

16 bit		Initial value
PC	: Program counter	FFFD <sub>H</sub>
A	: Accumulator	Indeterminate
T	: Temporary accumulator	Indeterminate
IX	: Index register	Indeterminate
EP	: Extra pointer	Indeterminate
SP	: Stack pointer	Indeterminate
RP   CCR	: Program status	I-flag = 0, IL1, 0 = 11 The other bit values are indeterminate
PS		

The PS can further be divided into higher 8 bits for use as a register bank pointer (RP) and the lower 8 bits for use as a condition code register (CCR) . (See the diagram below.)

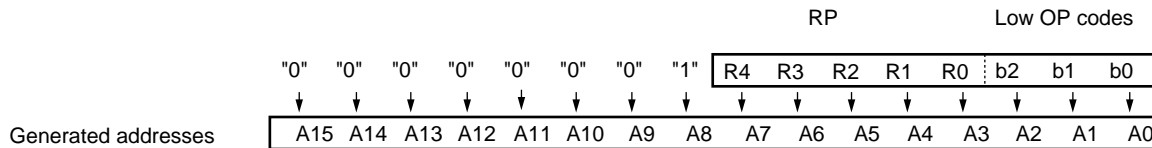
### • Structure of the Program Status Register





The RP indicates the address of the register bank currently in use. The relationship between the pointer contents and the actual address is based on the conversion rule illustrated below.

• **Rule for Conversion of Actual Addresses of the General-purpose Register Area**



The CCR consists of bits indicating the results of arithmetic operations and the contents of transfer data and bits for control of CPU operations at the time of an interrupt.

- H-flag : Set to “1” when a carry or a borrow from bit 3 to bit 4 occurs as a result of an arithmetic operation. Cleared to “0” otherwise. This flag is for decimal adjustment instructions.
- I-flag : Interrupt is enabled when this flag is set to “1”. Interrupt is disabled when the flag is cleared to “0”. Cleared to “0” at the reset.
- IL1, 0 : Indicates the level of the interrupt currently allowed. Processes an interrupt only if its request level is higher than the value indicated by this bit.

IL1	IL0	Interrupt level	High-low
0	0	1	<div style="text-align: center;"> High  ↑  ↓  Low = no interrupt </div>
0	1		
1	0	2	
1	1	3	

- N-flag : Set to “1” if the MSB becomes to “1” as the result of an arithmetic operation. Cleared to “0” when the bit is cleared to “0”.
- Z-flag : Set to “1” when an arithmetic operation results in 0. Cleared otherwise.
- V-flag : Set to “1” if the complement on 2 overflows as a result of an arithmetic operation. Cleared to “0” if the overflow does not occur.
- C-flag : Set to “1” when a carry or a borrow from bit 7 occurs as a result of an arithmetic operation. Cleared to “0” otherwise. Set to the shift-out value in the case of a shift instruction.

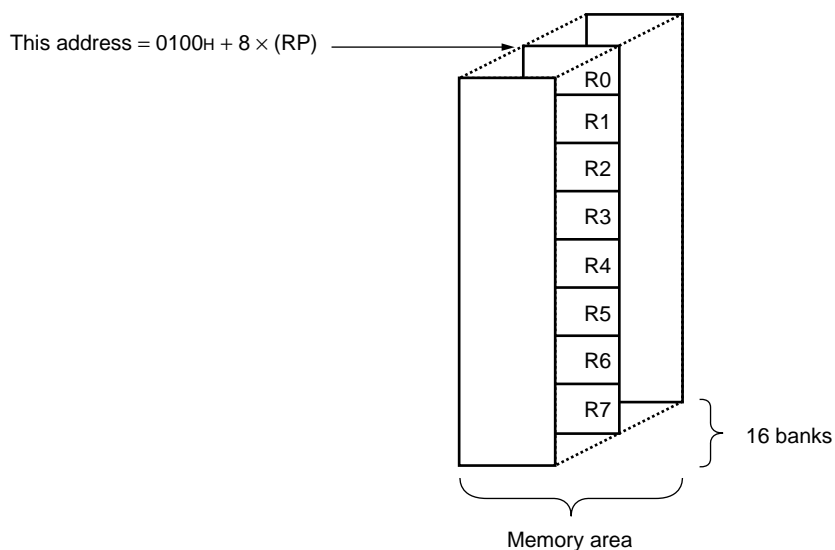
# MB89201 Series

The following general-purpose registers are provided :

General-purpose registers : An 8-bit register for storing data

The general-purpose registers are 8 bits and located in the register banks of the memory. One bank contains eight registers and up to a total of 16 banks can be used on the MB89201 series. The bank currently in use is indicated by the register bank pointer (RP) .

- **Register Bank Configuration**



## ■ I/O MAP

Address	Register name	Register description	Read/write	Initial value
0000 <sub>H</sub>	PDR0	Port 0 data register	R/W	X X X X X X X X
0001 <sub>H</sub>	DDR0	Port 0 data direction register	W	0 0 0 0 0 0 0 0
0002 <sub>H</sub> to 00006 <sub>H</sub>	Prohibited area			
0007 <sub>H</sub>	SYCC	System clock control register	R/W	1 - - M M 1 0 0
0008 <sub>H</sub>	STBC	Standby control register	R/W	0 0 0 1 0 - -
0009 <sub>H</sub>	WDTC	Watchdog timer control register	R/W	0 - - - X X X X
000A <sub>H</sub>	TBTC	Timebase timer control register	R/W	0 0 - - - 0 0 0
000B <sub>H</sub>	Prohibited area			
000C <sub>H</sub>	PDR3	Port 3 data register	R/W	X X X X X X X X
000D <sub>H</sub>	DDR3	Port 3 data direction register	W	0 0 0 0 0 0 0 0
000E <sub>H</sub>	RSFR	Reset flag register	R	X X X X - - -
000F <sub>H</sub>	PDR4	Port 4 data register	R/W	- - - - X X X X
0010 <sub>H</sub>	DDR4	Port 4 data direction register	R/W	- - - - 0 0 0 0
0011 <sub>H</sub>	OUT4	Port 4 output format register	R/W	- - - - 0 0 0 0
0012 <sub>H</sub>	PDR5	Port 5 data register	R/W	- - - - - - X
0013 <sub>H</sub>	DDR5	Port 5 data direction register	R/W	- - - - - - 0
0014 <sub>H</sub>	RCR21	12-bit PPG control register 1	R/W	0 0 0 0 0 0 0 0
0015 <sub>H</sub>	RCR22	12-bit PPG control register 2	R/W	- - 0 0 0 0 0 0
0016 <sub>H</sub>	RCR23	12-bit PPG control register 3	R/W	0 - 0 0 0 0 0 0
0017 <sub>H</sub>	RCR24	12-bit PPG control register 4	R/W	- - 0 0 0 0 0 0
0018 <sub>H</sub>	BZCR	Buzzer register	R/W	- - - - - 0 0 0
0019 <sub>H</sub>	TCCR	Capture control register	R/W	0 0 0 0 0 0 0 0
001A <sub>H</sub>	TCR1	Timer 1 control register	R/W	0 0 0 - 0 0 0 0
001B <sub>H</sub>	TCR0	Timer 0 control register	R/W	0 0 0 0 0 0 0 0
001C <sub>H</sub>	TDR1	Timer 1 data register	R/W	X X X X X X X X
001D <sub>H</sub>	TDR0	Timer 0 data register	R/W	X X X X X X X X
001E <sub>H</sub>	TCPH	Capture data register H	R	X X X X X X X X
001F <sub>H</sub>	TCPL	Capture data register L	R	X X X X X X X X
0020 <sub>H</sub>	TCR2	Timer output control register	R/W	- - - - - 0 0
0021 <sub>H</sub>	Prohibited area			
0022 <sub>H</sub>	CNTR	PWM control register	R/W	0 - 0 0 0 0 0 0
0023 <sub>H</sub>	COMR	PWM compare register	W	X X X X X X X X
0024 <sub>H</sub>	EIC1	External interrupt 1 Control register 1	R/W	0 0 0 0 0 0 0 0

(Continued)

# MB89201 Series

Address	Register name	Register description	Read/write	Initial value
0025 <sub>H</sub>	EIC2	External interrupt 1 Control register 2	R/W	- - - - 0 0 0 0
0026 <sub>H</sub>	Prohibited area			
0027 <sub>H</sub>				
0028 <sub>H</sub>	SMC	Serial mode control register	R/W	0 0 0 0 0 - 0 0
0029 <sub>H</sub>	SRC	Serial rate control register	R/W	- - 0 1 1 0 0 0
002A <sub>H</sub>	SSD	Serial status and data register	R/W	0 0 1 0 0 - 1 X
002B <sub>H</sub>	SIDR	Serial input data register	R	X X X X X X X X
	SODR	Serial output data register	W	X X X X X X X X
002C <sub>H</sub>	UPC	Clock division selection register	R/W	- - - - 0 0 1 0
002D <sub>H</sub> to 002F <sub>H</sub>	Prohibited area			
0030 <sub>H</sub>	ADC1	A/D converter control register 1	R/W	- 0 0 0 0 0 0 0
0031 <sub>H</sub>	ADC2	A/D converter control register 2	R/W	- 0 0 0 0 0 0 1
0032 <sub>H</sub>	ADDH	A/D converter data register H	R	- - - - - X X
0033 <sub>H</sub>	ADDL	A/D converter data register L	R	X X X X X X X X
0034 <sub>H</sub>	ADEN	A/D enable register	R/W	0 0 0 0 0 0 0 0
0035 <sub>H</sub>	Prohibited area			
0036 <sub>H</sub>	EIE2	External interrupt 2 control register1	R/W	0 0 0 0 0 0 0 0
0037 <sub>H</sub>	EIF2	External interrupt 2 control register2	R/W	- - - - - - 0
0038 <sub>H</sub>	Prohibited area			
0039 <sub>H</sub>	SMR	Serial mode register	R/W	0 0 0 0 0 0 0 0
003A <sub>H</sub>	SDR	Serial data register	R/W	X X X X X X X X
003B <sub>H</sub>	SSEL	Serial function switching register	R/W	- - - - - - 0
003C <sub>H</sub> to 003F <sub>H</sub>	Prohibited area			
0040 <sub>H</sub>	WRARH0	Upper-address setting register	R/W	X X X X X X X X
0041 <sub>H</sub>	WRARL0	Lower-address setting register	R/W	X X X X X X X X
0042 <sub>H</sub>	WRDR0	Data setting register 0	R/W	X X X X X X X X
0043 <sub>H</sub>	WRARH1	Upper-address setting register	R/W	X X X X X X X X
0044 <sub>H</sub>	WRARL1	Lower-address setting register	R/W	X X X X X X X X
0045 <sub>H</sub>	WRDR1	Data setting register 1	R/W	X X X X X X X X
0046 <sub>H</sub>	WREN	Address comparison EN register	R/W	X X X X X X 0 0
0047 <sub>H</sub>	WROR	Wild-register data test register	R/W	- - - - - 0 0
0048 <sub>H</sub> to 005F <sub>H</sub>	Prohibited area			

(Continued)

(Continued)

Address	Register name	Register description	Read/write	Initial value
0060 <sub>H</sub>	PDR6	Port 6 data register	R/W	- - - - 1 X X
0061 <sub>H</sub>	DDR6	Port 6 data direction register*	R/W	- - - - - 0 0
0062 <sub>H</sub>	PUL6	Port 6 pull-up setting register	R/W	- - - - - 0 0 0
0063 <sub>H</sub>	PDR7	Port 7 data register	R/W	- - - - - X X X
0064 <sub>H</sub>	DDR7	Port 7 data direction register	R/W	- - - - - 0 0 0
0065 <sub>H</sub>	PUL7	Port 7 pull-up setting register	R/W	- - - - - 0 0 0
0066 <sub>H</sub> to 006F <sub>H</sub>	Prohibited area			
0070 <sub>H</sub>	PUL0	Port-0 pull-up setting register	R/W	0 0 0 0 0 0 0 0
0071 <sub>H</sub>	PUL3	Port-3 pull-up setting register	R/W	0 0 0 0 0 0 0 0
0072 <sub>H</sub>	PUL5	Port-5 pull-up setting register	R/W	- - - - - - 0
0073 <sub>H</sub> to 0078 <sub>H</sub>	Prohibited area			
0079 <sub>H</sub>	FMCS	Flash memory control status register	R/W	0 0 0 X - - - -
007A <sub>H</sub>	Prohibited area			
007B <sub>H</sub>	ILR1	Interrupt level setting register1	W	1 1 1 1 1 1 1 1
007C <sub>H</sub>	ILR2	Interrupt level setting register2	W	1 1 1 1 1 1 1 1
007D <sub>H</sub>	ILR3	Interrupt level setting register3	W	1 1 1 1 1 1 1 1
007E <sub>H</sub>	ILR4	Interrupt level setting register4	W	1 1 1 1 1 1 1 1
007F <sub>H</sub>	ITR	Interrupt test register	Not available	- - - - - 0 0

- : Unused, X : Undefined, M : Set using the mask option

Note : Do not use prohibited areas.

\* : No used in MB89N201

# MB89201 Series

## ■ ELECTRICAL CHARACTERISTICS

### 1. Absolute Maximum Ratings

(V<sub>SS</sub> = 0.0V)

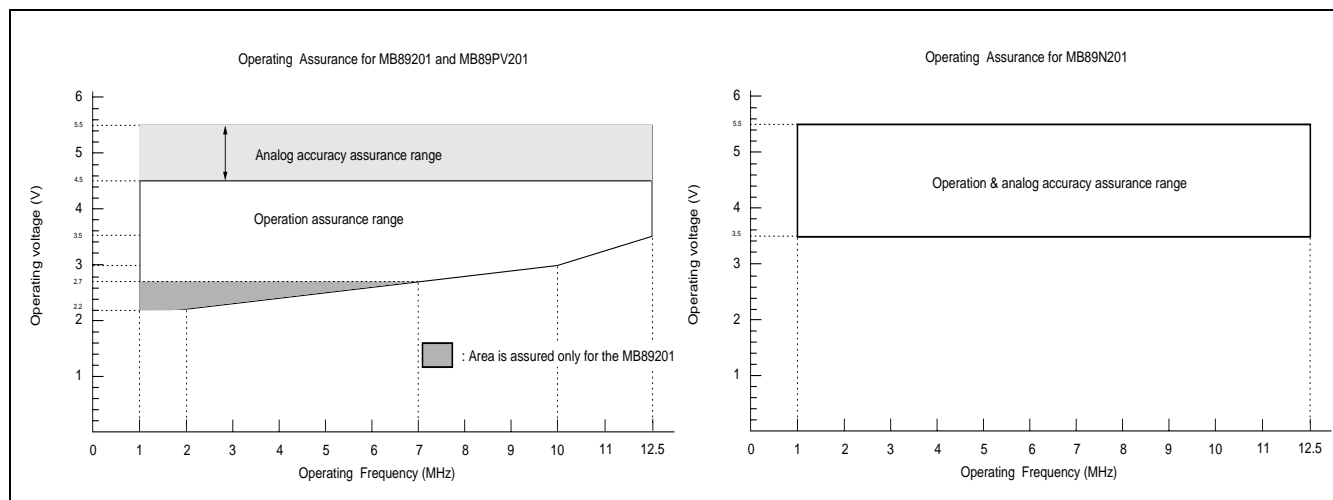
Parameter	Symbol	Value		Unit	Remarks
		Min.	Max.		
Power supply voltage	V <sub>CC</sub>	V <sub>SS</sub> – 0.3	V <sub>SS</sub> + 6.0	V	
Input voltage	V <sub>I</sub>	V <sub>SS</sub> – 0.3	V <sub>CC</sub> + 0.3	V	
Output voltage	V <sub>O</sub>	V <sub>SS</sub> – 0.3	V <sub>CC</sub> + 6.0	V	
“L” level maximum output current	I <sub>OL</sub>	—	15	mA	
“L” level average output current	I <sub>OLAV1</sub>	—	4	mA	Average value (operating current × operating rate) Pins excluding P40 to P43, P70 to P72
	I <sub>OLAV2</sub>	—	12	mA	Average value (operating current × operating rate) Pins P40 to P43, P70 to P72
“L” level total maximum output current	ΣI <sub>OL</sub>	—	100	mA	
“H” level maximum output current	I <sub>OH</sub>	—	–10	mA	Pins excluding P60 to P61
“H” level average output current	I <sub>OHAV</sub>	—	–4	mA	Average value (operating current × operating rate)
“H” level total maximum output current	ΣI <sub>OH</sub>	—	–50	mA	
Power consumption	P <sub>d</sub>	—	200	mW	
Operating temperature	T <sub>a</sub>	–40	+85	°C	
Storage temperature	T <sub>stg</sub>	–55	+150	°C	

WARNING: Semiconductor devices can be permanently damaged by application of stress (voltage, current, temperature, etc.) in excess of absolute maximum ratings. Do not exceed these ratings.

## 2. Recommended Operating Conditions

(V<sub>SS</sub> = 0.0V)

Parameter	Symbol	Value		Unit	Remarks
		Min.	Max.		
Power supply voltage	V <sub>CC</sub>	2.2	5.5	V	MB89201
		3.5	5.5	V	MB89N201
		2.7	5.5	V	MB89V201
		1.5	5.5	V	Retains the RAM state in stop mode
“H” level input voltage	V <sub>IH</sub>	0.7 V <sub>CC</sub>	V <sub>CC</sub> + 0.3	V	P00 to P07, P31, P37, P40 to P43, P50, P60 to P62, P70 to P72
	V <sub>IHS</sub>	0.8 V <sub>CC</sub>	V <sub>CC</sub> + 0.3	V	$\overline{\text{RST}}$ , EC, $\overline{\text{INT20}}$ to $\overline{\text{INT27}}$ , UCK/SCK, INT10 to INT12, P30, P32 to P36, UI/SI
“L” level input voltage	V <sub>IL</sub>	V <sub>SS</sub> – 0.3	0.3 V <sub>CC</sub>	V	P00 to P07, P31, P37, P40 to P43, P50, P60 to P62, P70 to P72
	V <sub>ILS</sub>	V <sub>SS</sub> – 0.3	0.2 V <sub>CC</sub>	V	$\overline{\text{RST}}$ , EC, $\overline{\text{INT20}}$ to $\overline{\text{INT27}}$ , UCK/SCK, INT10 to INT12, P30, P32 to P36, UI/SI
Open-drain output pin application voltage	V <sub>D</sub>	V <sub>SS</sub> – 0.3	V <sub>CC</sub> + 0.3	V	P40 to P43, P62, $\overline{\text{RST}}$
Operating temperature	T <sub>a</sub>	–40	+85	°C	



**WARNING:** The recommended operating conditions are required in order to ensure the normal operation of the semiconductor device. All of the device's electrical characteristics are warranted when the device is operated within these ranges.

Always use semiconductor devices within their recommended operating condition ranges. Operation outside these ranges may adversely affect reliability and could result in device failure.

No warranty is made with respect to uses, operating conditions, or combinations not represented on the data sheet. Users considering application outside the listed conditions are advised to contact their FUJITSU representatives beforehand.

# MB89201 Series

## 3. DC Characteristics

( $V_{CC} = 5.0 \text{ V} \pm 10\%$ ,  $V_{SS} = 0.0 \text{ V}$ ,  $F_{CH} = 12.5 \text{ MHz}$  (External clock),  $T_a = -40 \text{ }^\circ\text{C}$  to  $+85 \text{ }^\circ\text{C}$ )

Parameter	Sym- bol	Pin name		Condition	Value			Unit	Remarks
					Min.	Typ.	Max.		
“H” level input voltage	V <sub>IH</sub>	P00 to P07, P31, P37, P40 to P43, P50, P60 to P62, P70 to P72		—	0.7 V <sub>CC</sub>	—	V <sub>CC</sub> + 0.3	V	
	V <sub>IHS</sub>	P30, P32 to P36, $\overline{RST}$ UCK/SCK, UI/SI, EC, $\overline{INT20}$ to $\overline{INT27}$ , INT10 to INT12		—	0.8 V <sub>CC</sub>	—	V <sub>CC</sub> + 0.3	V	
“L” level input voltage	V <sub>IL</sub>	P00 to P07, P31, P37, P40 to P43, P50, P60 to P62, P70 to P72		—	V <sub>SS</sub> – 0.3	—	0.3 V <sub>CC</sub>	V	
	V <sub>ILS</sub>	P30, P32 to P36, $\overline{RST}$ , UCK/SCK, UI/SI, EC, $\overline{INT20}$ to $\overline{INT27}$ , INT10 to INT12		—	V <sub>SS</sub> – 0.3	—	0.2 V <sub>CC</sub>	V	
Open-drain output pin application voltage	V <sub>D</sub>	P40 to P43, $\overline{RST}$ /P62		—	V <sub>SS</sub> – 0.3	—	V <sub>CC</sub> + 0.3	V	
“H” level output voltage	V <sub>OH</sub>	P00 to P07, P30 to P37, P40 to P43, P50, P70 to P72		I <sub>OH</sub> = –4.0 mA	4.0	—	—	V	
“L” level output voltage	V <sub>OL1</sub>	P00 to P07, P30 to P37, P50, $\overline{RST}$ /P62		I <sub>OL</sub> = 4.0 mA	—	—	0.4	V	
	V <sub>OL2</sub>	P40 to P43, P70 to P72		I <sub>OL</sub> = 12.0 mA	—	—	0.4	V	
Input leakage current	I <sub>LI</sub>	P00 to P07, P30 to P37, P40 to P43, P50 , P60 to P61, $\overline{RST}$ /P62, P70 to P72		0.45 V < V <sub>I</sub> < V <sub>CC</sub>	—	—	±5	μA	Without pull-up resis- tor
Pull-up resistance	R <sub>PULL</sub>	P00 to P07, P30 to P37, P50, $\overline{RST}$ /P62, P70 to P72		V <sub>I</sub> = 0.0 V	25	50	100	kΩ	
Power supply current	I <sub>CC</sub>	V <sub>CC</sub>	Normal operation mode (External clock, highest gear speed)	When A/D converter stops	—	8	12	mA	MB89201
					—	6	9	mA	MB89N201
				When A/D converter starts	—	10	15	mA	MB89201
					—	8	12	mA	MB89N201
	I <sub>CCS</sub>		Sleep mode (External clock, highest gear speed)	When A/D converter stops	—	4	6	mA	MB89201
					—	3	5	mA	MB89N201
	I <sub>CCH</sub>		Stop mode Ta = +25 °C (External clock)	When A/D converter stops	—	—	1	μA	MB89201
					—	—	10	μA	MB89N201
Input capacitance	C <sub>IN</sub>	Other than V <sub>CC</sub> , V <sub>SS</sub>		—	—	10	—	pF	MB89N201



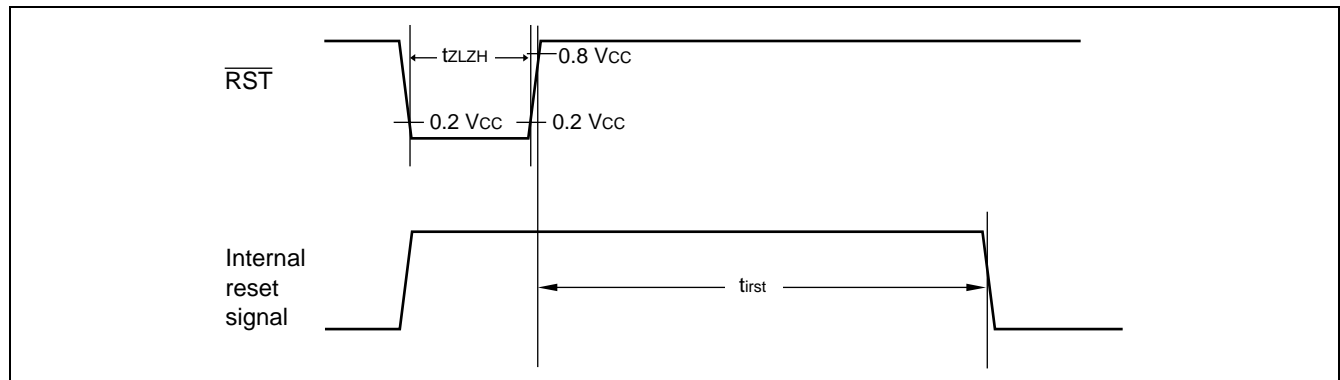
## 4. AC Characteristics

### (1) Reset Timing

( $V_{SS} = 0.0\text{ V}$ ,  $T_a = -40\text{ }^{\circ}\text{C}$  to  $+85\text{ }^{\circ}\text{C}$ )

Parameter	Symbol	Condition	Value		Unit	Remarks
			Min.	Max.		
RST "L" pulse width	$t_{ZLZH}$	—	45	—	ns	
Internal reset pulse extension	$t_{rst}$	—	48 $t_{HCYL}$	—	ns	

$t_{HCYL}$  : 1 oscillating clock cycle time

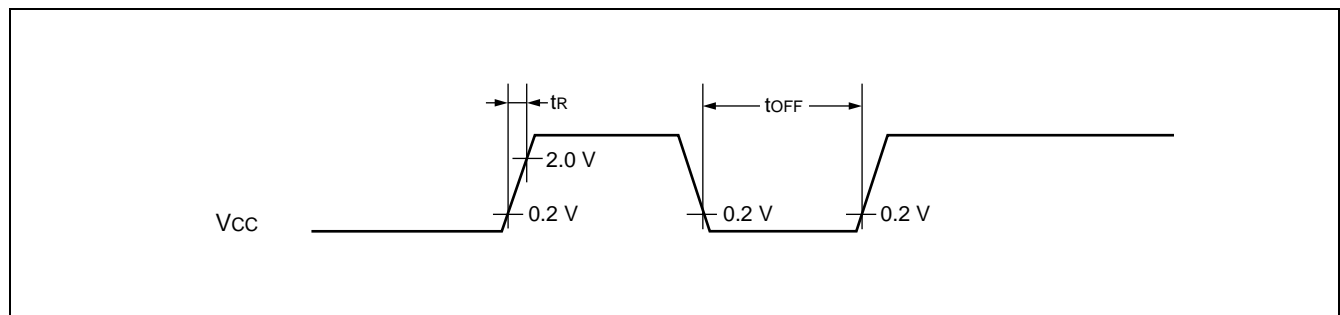


Notes: •When the power-on reset option is not on, leave the external reset on until oscillation becomes stable.  
 •If the reset pulse applied to the external reset pin ( $\overline{RST}$ ) does not meet the specifications, it may cause malfunctions. Use caution so that the reset pulse less than the specifications will not be fed to the external reset pin ( $\overline{RST}$ ).

### (2) Power-on Reset

( $V_{SS} = 0.0\text{ V}$ ,  $T_a = -40\text{ }^{\circ}\text{C}$  to  $+85\text{ }^{\circ}\text{C}$ )

Parameter	Symbol	Condition	Value		Unit	Remarks
			Min.	Max.		
Power supply rising time	$t_r$	—	—	50	ms	
Power supply cutoff time	$t_{OFF}$	—	1	—	ms	Due to repeated operations



Note : The supply voltage must be set to the minimum value required for operation within the prescribed default oscillation settling time.

Note : For the product that select P62 instead of  $\overline{RST}$  pin by mask option, the only way to initialize the device is by power on reset. If the power supply rise / cutoff time does not meet the specifications, then power on reset cannot be generated, and the device become unusable.

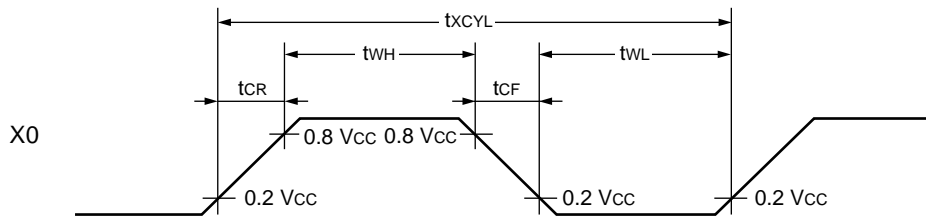
# MB89201 Series

## (3) Clock Timing

( $V_{SS} = 0.0\text{ V}$ ,  $T_a = -40^\circ\text{C}$  to  $+85^\circ\text{C}$ )

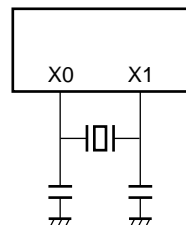
Parameter	Symbol	Condition	Value		Unit	Remarks
			Min.	Max.		
Clock frequency	$F_{CH}$	—	1	12.5	MHz	
Clock cycle time	$t_{CYL}$		80	1000	ns	
Input clock pulse width	$t_{WH}$ $t_{WL}$		20	—	ns	
Input clock rising/falling time	$t_{CR}$ $t_{CF}$		—	10	ns	

### • X0 and X1 Timing and Conditions

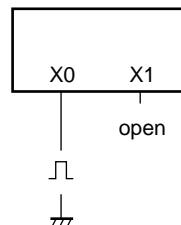


### • Main Clock Conditions

When a crystal or ceramic resonator is used



When an external clock is used



## (4) Instruction Cycle.

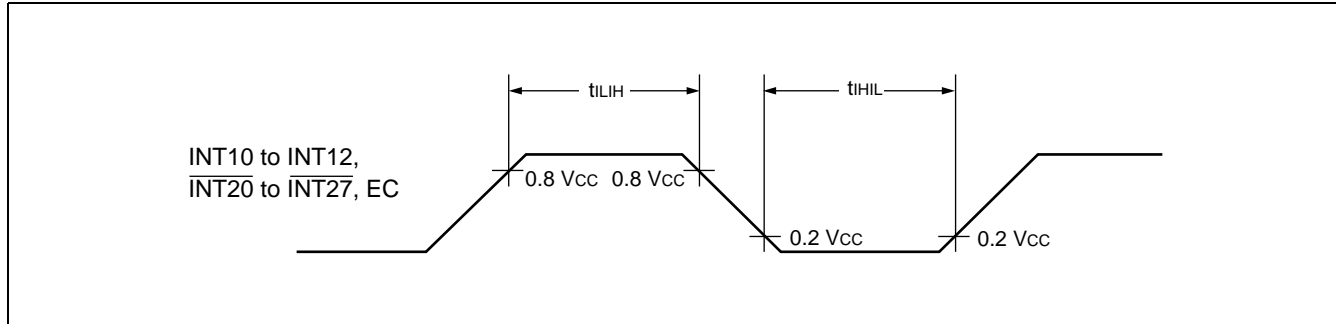
Parameter	Symbol	Value (typical)	Unit	Remarks
Instruction cycle (minimum execution time)	$t_{INST}$	$4/F_{CH}$ , $8/F_{CH}$ , $16/F_{CH}$ , $64/F_{CH}$	$\mu\text{s}$	$t_{INST} = 0.32\text{ }\mu\text{s}$ when operating at $F_{CH} = 12.5\text{ MHz}$ ( $4/F_{CH}$ )

## (6) Peripheral Input Timing

( $V_{CC} = 5.0\text{ V} \pm 10\%$ ,  $V_{SS} = 0.0\text{ V}$ ,  $T_a = -40\text{ }^{\circ}\text{C}$  to  $+85\text{ }^{\circ}\text{C}$ )

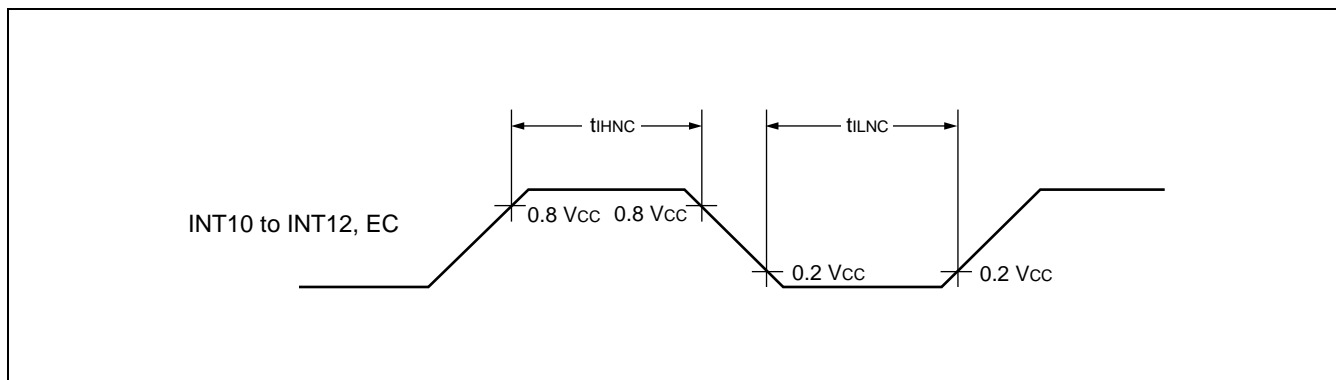
Parameter	Symbol	Pin name	Value		Unit	Remarks
			Min.	Max.		
Peripheral input "H" pulse width	$t_{LIH}$	INT10 to INT12,	$2\ t_{INST}^*$	—	$\mu\text{s}$	
Peripheral input "L" pulse width	$t_{LIL}$	INT20 to INT27, EC	$2\ t_{INST}^*$	—	$\mu\text{s}$	

\* : For information on  $t_{INST}$  see " (4) Instruction Cycle".



( $V_{CC} = 5.0\text{ V} \pm 10\%$ ,  $V_{SS} = 0.0\text{ V}$ ,  $T_a = -40\text{ }^{\circ}\text{C}$  to  $+85\text{ }^{\circ}\text{C}$ )

Parameter	Symbol	Pin name	Value			Unit	Remarks
			Min.	Typ.	Max.		
Peripheral input "H" noise limit	$t_{IHNC}$	P00 to P07, P30 to P37, P40 to P43, P50, P60 to P62, P70 to P72, $\overline{\text{RST}}$ , EC, INT20 to INT27, INT10 to INT12	—	45	—	ns	
Peripheral input "L" noise limit	$t_{ILNC}$		—	45	—	ns	



# MB89201 Series

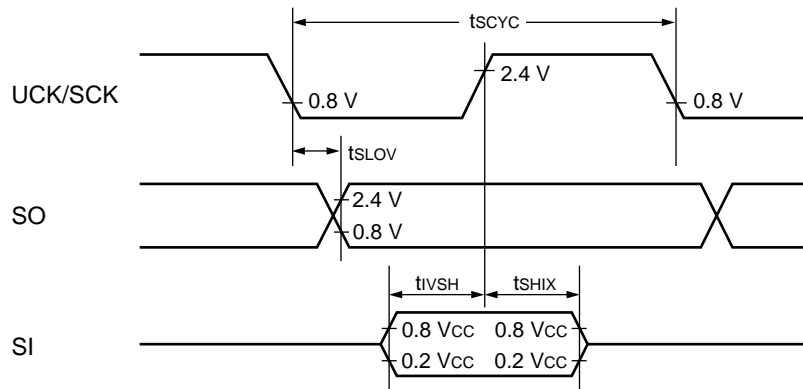
## (7) UART, Serial I/O Timing

( $V_{CC} = 5.0 \text{ V} \pm 10\%$ ,  $V_{SS} = 0.0 \text{ V}$ ,  $T_a = -40 \text{ }^{\circ}\text{C}$  to  $+85 \text{ }^{\circ}\text{C}$ )

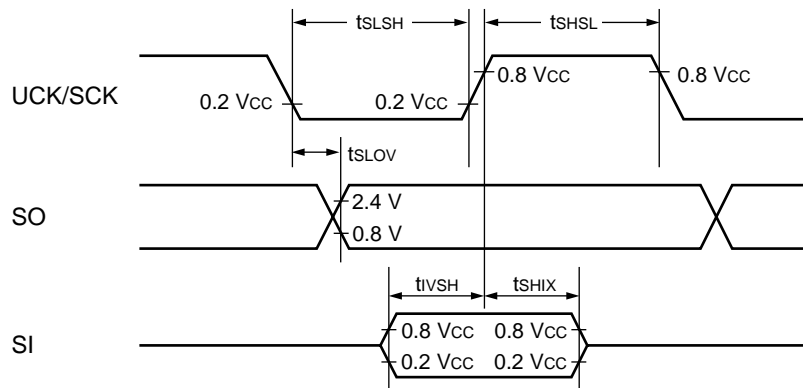
Parameter	Symbol	Pin name	Condition	Value		Unit	Remarks
				Min.	Max.		
Serial clock cycle time	$t_{SCYC}$	UCK/SCK	Internal shift clock mode	$2 t_{INST}^*$	—	$\mu\text{s}$	
UCK/SCK $\downarrow \rightarrow$ SO time	$t_{SLOV}$	UCK/SCK, SO		-200	200	ns	
Valid SI $\rightarrow$ UCK/SCK $\uparrow$	$t_{IVSH}$	UCK/SCK, SI		$1/2 t_{INST}^*$	—	$\mu\text{s}$	
UCK/SCK $\uparrow \rightarrow$ Valid SI hold time	$t_{SHIX}$	UCK/SCK, SI		$1/2 t_{INST}^*$	—	$\mu\text{s}$	
Serial clock "H" pulse width	$t_{SHSL}$	UCK/SCK	External shift clock mode	$t_{INST}^*$	—	$\mu\text{s}$	
Serial clock "L" pulse width	$t_{SLSH}$	UCK/SCK		$t_{INST}^*$	—	$\mu\text{s}$	
UCK/SCK $\downarrow \rightarrow$ SO time	$t_{SLOV}$	UCK/SCK, SO		0	200	ns	
Valid SI $\rightarrow$ UCK/SCK	$t_{IVSH}$	UCK/SCK, SI		$1/2 t_{INST}^*$	—	$\mu\text{s}$	
UCK/SCK $\uparrow \rightarrow$ Valid SI hold time	$t_{SHIX}$	UCK/SCK, SI		$1/2 t_{INST}^*$	—	$\mu\text{s}$	

\* : For information on  $t_{inst}$ , see "(4) Instruction Cycle".

### • Internal Shift Clock Mode



### • External Shift Clock Mode



## 5. A/D Converter

### (1) A/D Converter Electrical Characteristics

(V<sub>SS</sub> = 0.0 V, Ta = -40 °C to +85 °C)

Parameter	Symbol	Value			Unit	Remarks
		Min.	Typ.	Max.		
Resolution	—	—	—	10	bit	
Total error		-5.0	—	+5.0	LSB	
Linearity error		-3.0	—	+3.0	LSB	
Differential linearity error		-2.5	—	+2.5	LSB	
Zero transition voltage	V <sub>OT</sub>	V <sub>SS</sub> - 3.5 LSB	V <sub>SS</sub> + 0.5 LSB	V <sub>SS</sub> + 4.5 LSB	V	
Full-scale transition voltage	V <sub>FST</sub>	V <sub>CC</sub> - 6.5 LSB	V <sub>CC</sub> - 1.5 LSB	V <sub>CC</sub> + 2.0 LSB	V	
A/D mode conversion time	—	—	—	38 t <sub>INST</sub> *	μs	
Analog port input current	I <sub>AIN</sub>	—	—	10	μA	
Analog input voltage range	—	0	—	V <sub>CC</sub>	V	
Power supply voltage for A/D accuracy assurance	V <sub>CC</sub>	4.5	—	5.5	V	MB89201 / MB89V201
		3.5	—	5.5	V	MB89N201

\* : For information on t<sub>inst</sub>, see “ (4) Instruction Cycle” in “4. AC Characteristics.”

### (2) A/D Converter Glossary

- Resolution

Analog changes that are identifiable with the A/D converter

When the number of bits is 10, analog voltage can be divided into 2<sup>10</sup> = 1024.

- Linearity error (unit : LSB)

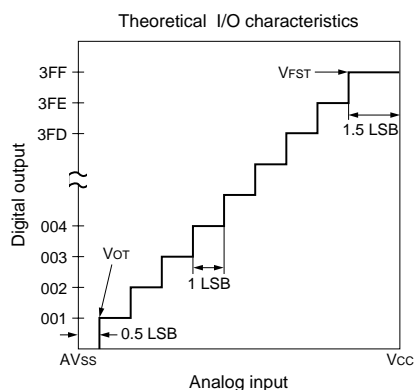
The deviation of the straight line connecting the zero transition point (“00 0000 0000” ↔ “00 0000 0001”) with the full-scale transition point (“11 1111 1111” ↔ “11 1111 1110”) from actual conversion characteristics

- Differential linearity error (unit : LSB)

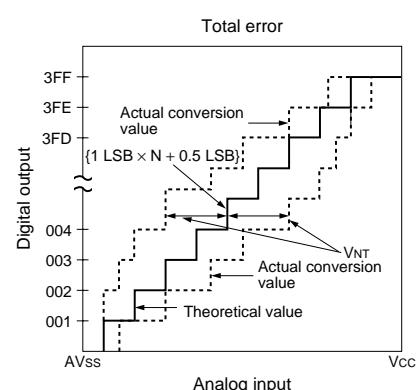
The deviation of input voltage needed to change the output code by 1 LSB from the theoretical value

- Total error (unit : LSB)

The difference between theoretical and actual conversion values

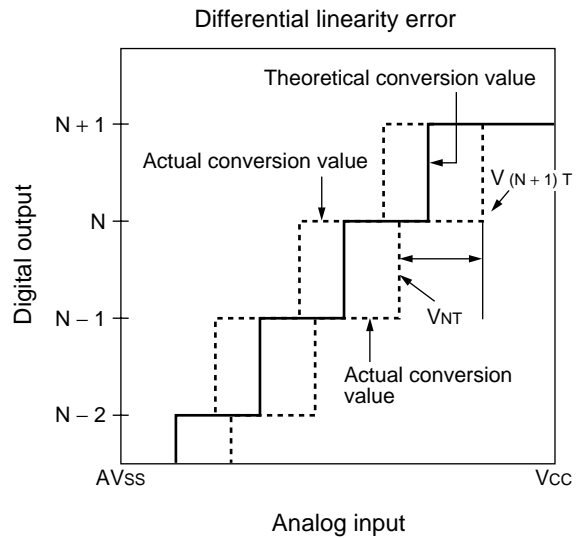
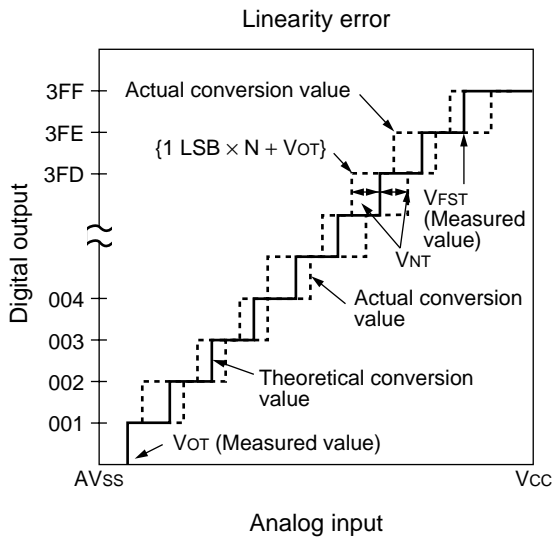
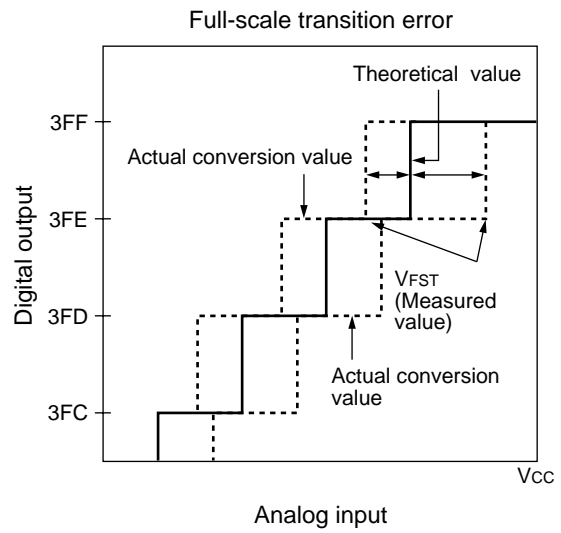
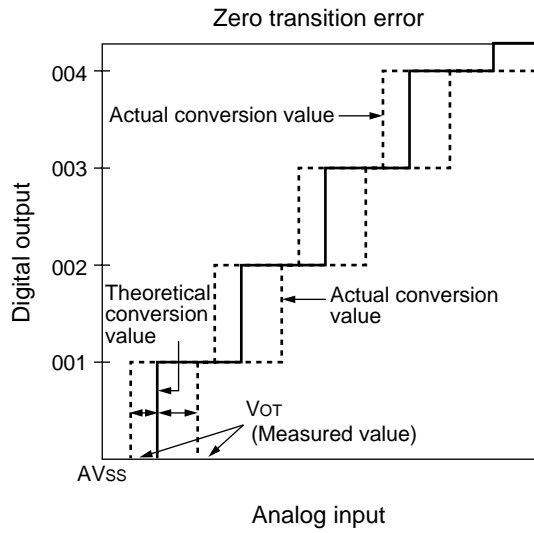


$$1 \text{ LSB} = \frac{V_{FST} - V_{OT}}{1022} \text{ (V)}$$



$$\text{Total error of digital output } N = \frac{V_{NT} - \{1 \text{ LSB} \times N + 0.5 \text{ LSB}\}}{1 \text{ LSB}}$$

# MB89201 Series



$$\text{Linearity error of digital output } N = \frac{V_{NT} - \{1 \text{ LSB} \times N + V_{OT}\}}{1 \text{ LSB}}$$

$$\text{Differential linearity of error digital output } N = \frac{V_{(N+1)T} - V_{NT}}{1 \text{ LSB}} - 1$$

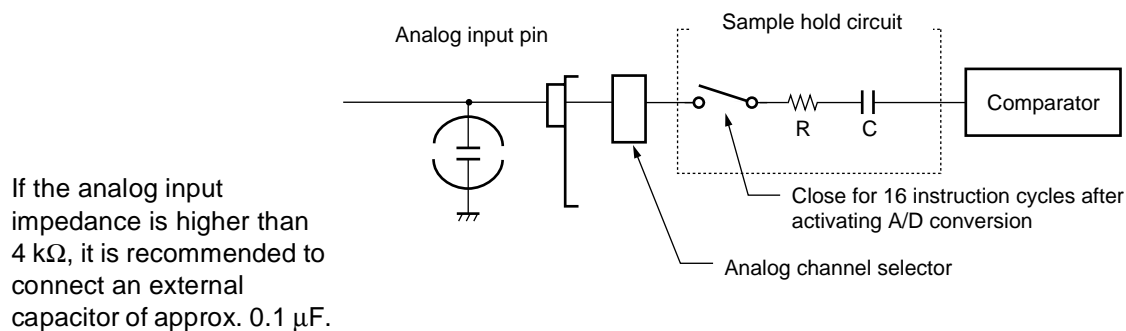
### (3) Notes on Using A/D Converter

- Input impedance of the analog input pins

The A/D converter used for the MB89201 series contains a sample hold circuit as illustrated below to fetch analog input voltage into the sample hold capacitor for 16 instruction cycles after activating A/D conversion. For this reason, if the output impedance of the external circuit for the analog input is high, analog input voltage might not stabilize within the analog input sampling period. Therefore, it is recommended to keep the output impedance of the external circuit low (below 4 k $\Omega$ ).

Note that if the impedance cannot be kept low, it is recommended to connect an external capacitor of about 0.1  $\mu$ F for the analog input pin.

- Analog Input Equivalent Circuit**



MB89201 R = approx. 2.2 k $\Omega$ , C = approx. 45 pF

MB89N201 R = approx. 3.2 k $\Omega$ , C = approx. 30 pF

- Error

The smaller the  $|V_{CC} - AV_{SS}|$ , the greater the error would become relatively.

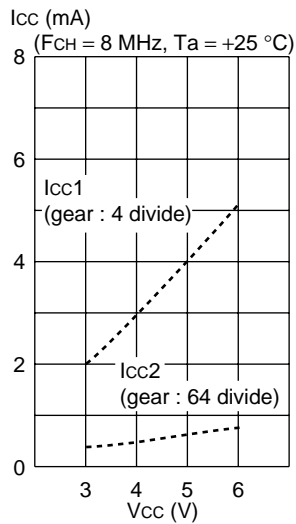
# MB89201 Series

## ■ EXAMPLE CHARACTERISTICS

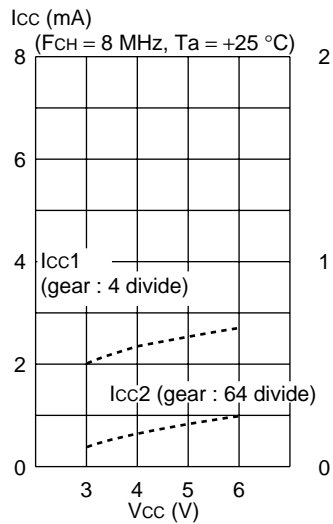
- Power supply current

MB89201/MB89N201 : 8 MHz ( when external clock are used)

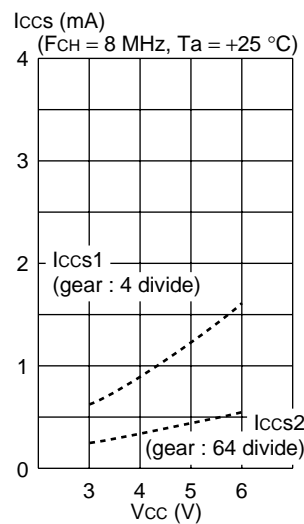
MB89201  
Normal operation mode  
( $I_{cc1} - V_{cc}$ ,  $I_{cc2} - V_{cc}$ )



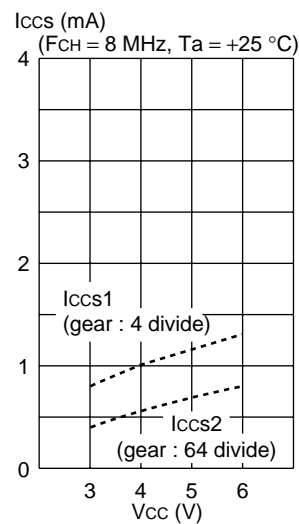
MB89N201  
Normal operation mode  
( $I_{cc1} - V_{cc}$ ,  $I_{cc2} - V_{cc}$ )



MB89201  
Sleep mode  
( $I_{ccs1} - V_{cc}$ ,  $I_{ccs2} - V_{cc}$ )



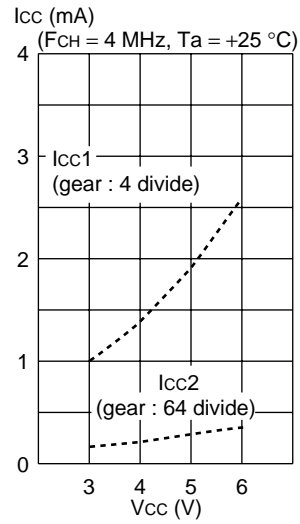
MB89N201  
Sleep mode  
( $I_{ccs1} - V_{cc}$ ,  $I_{ccs2} - V_{cc}$ )



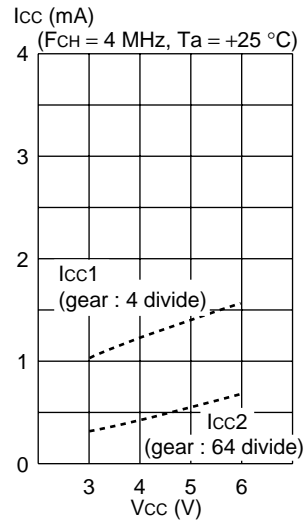


- MB89201/MB89N201 : 4 MHz (when external clock are used)

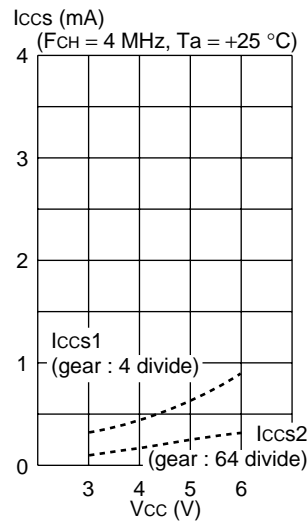
**MB89201**  
Normal operation mode  
( $I_{cc1} - V_{cc}$ ,  $I_{cc2} - V_{cc}$ )



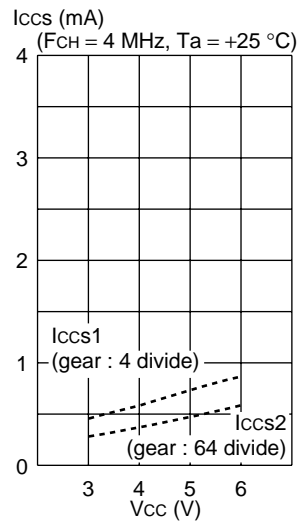
**MB89N201**  
Normal operation mode  
( $I_{cc1} - V_{cc}$ ,  $I_{cc2} - V_{cc}$ )



**MB89201**  
Seep mode  
( $I_{ccs1} - V_{cc}$ ,  $I_{ccs2} - V_{cc}$ )

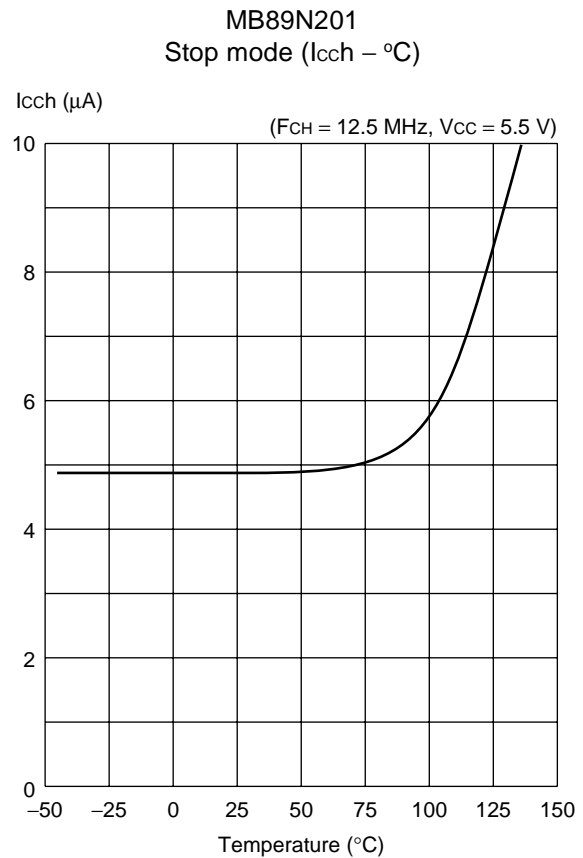
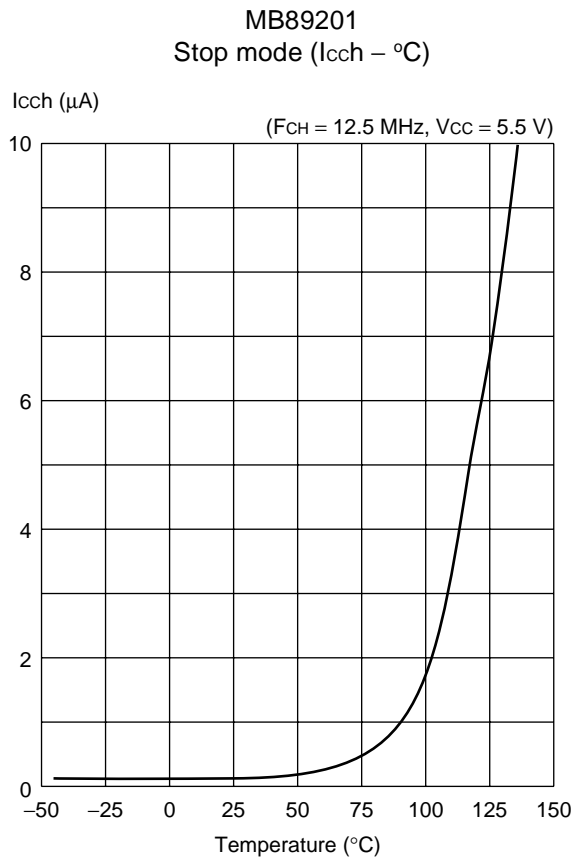
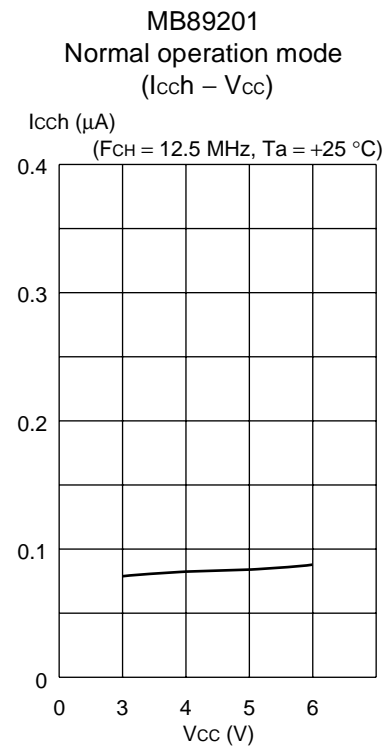
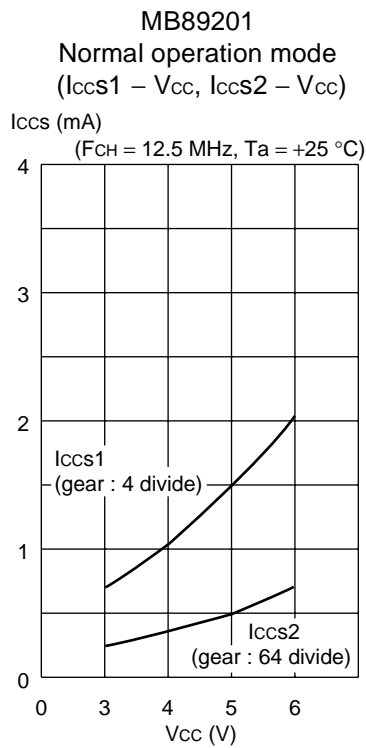
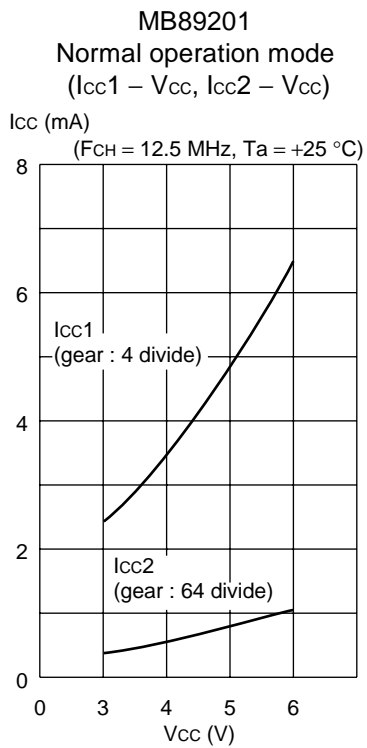


**MB89N201**  
Seep mode  
( $I_{ccs1} - V_{cc}$ ,  $I_{ccs2} - V_{cc}$ )

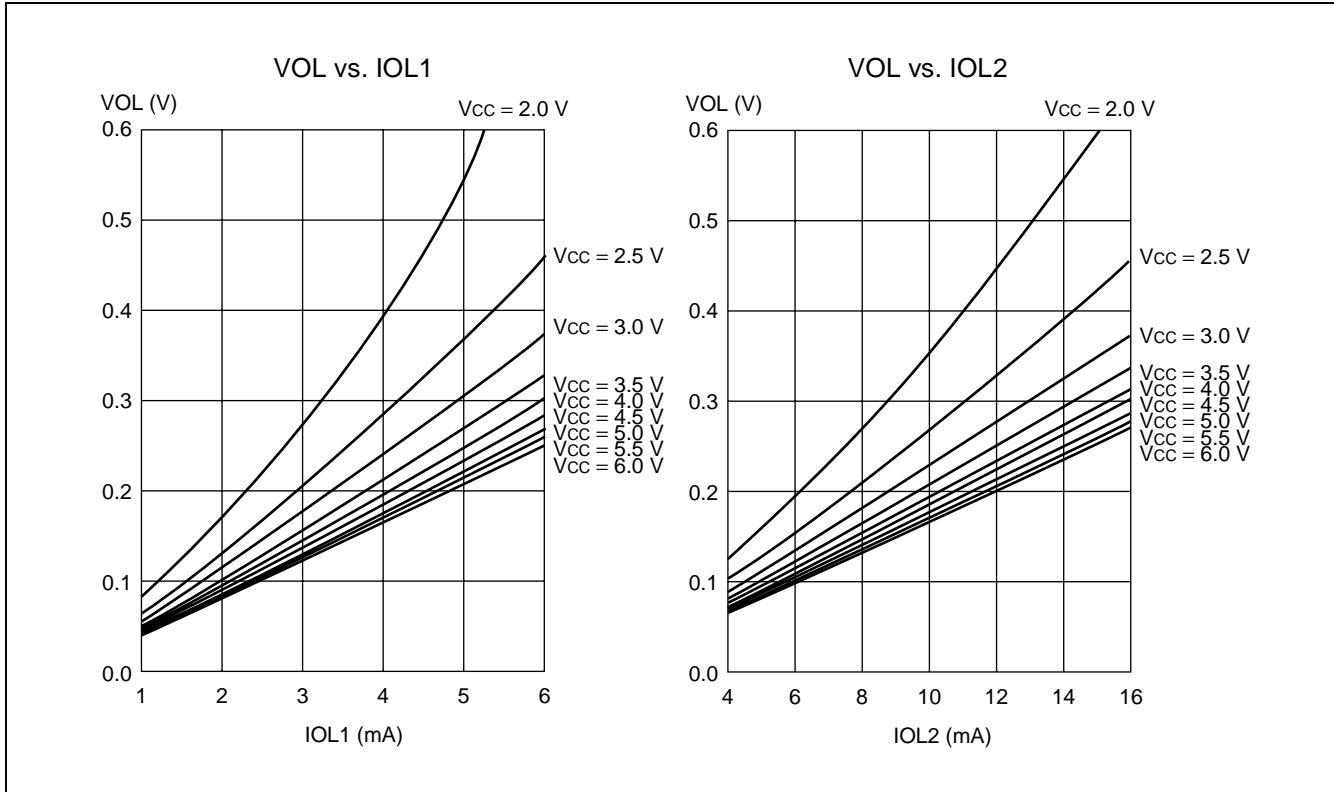


# MB89201 Series

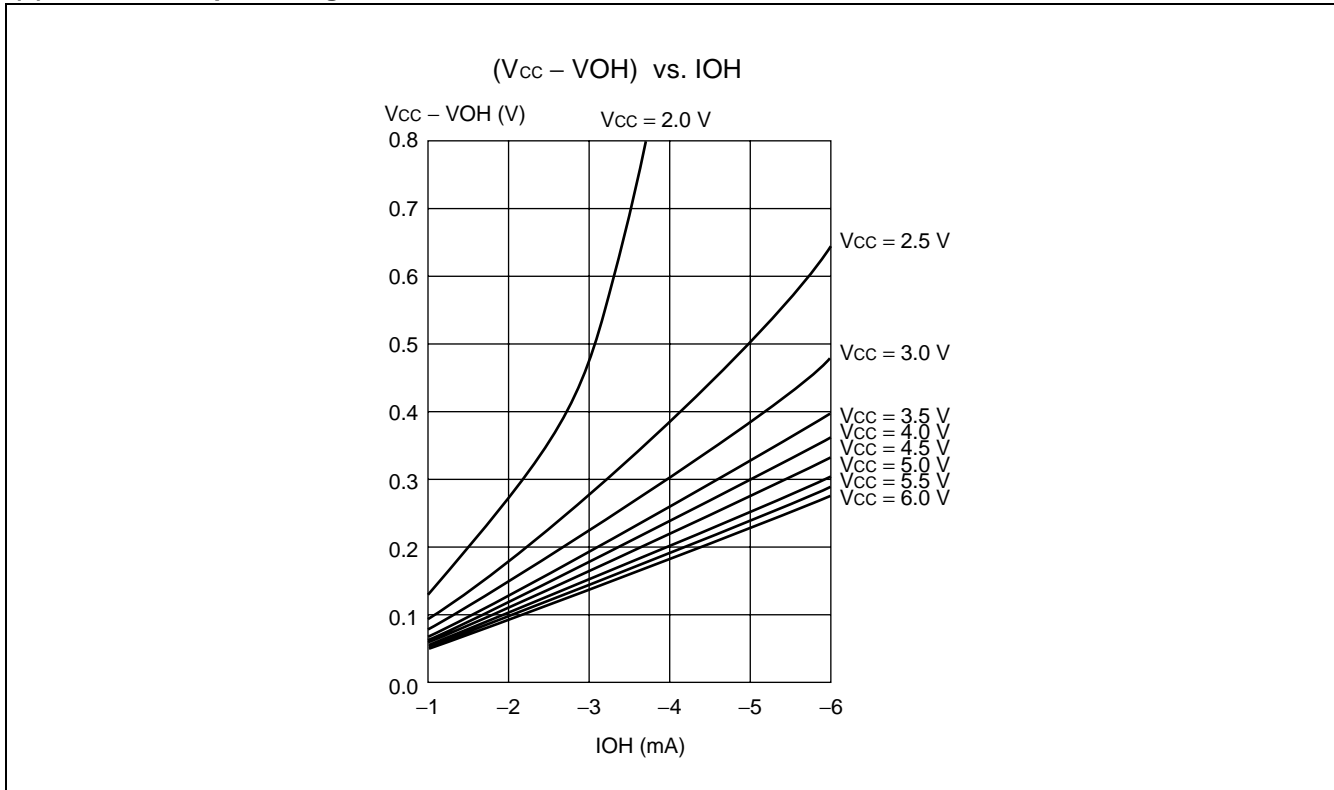
- MB89201/MB89N201 : 12.5 MHz (when external clock is used)



## (2) "L" level output voltage



## (3) "H" level output voltage



# MB89201 Series

## ■ MASK OPTIONS

No	Part number	MB89201	MB89N201	MB89V201
	Specifying procedure	Specify when ordering masking	Specify by part number	
1	Selection of initial value of main clock oscillation settling time* (with $F_{CH} = 12.5 \text{ MHz}$ ) 01 : $2^{14}/F_{CH}$ (Approx.1.31 ms) 10 : $2^{17}/F_{CH}$ (Approx.10.5 ms) 11 : $2^{18}/F_{CH}$ (Approx.21.0 ms)	Selectable	Fixed to $2^{18}/F_{CH}$	Fixed to $2^{18}/F_{CH}$
2	Reset pin output** With reset output Without reset output	Selectable	With reset output	With reset output
3	External Reset pin RST external reset pin is used P62 I/O pin is used	Selectable	Selectable	Selectable by SEL input

$F_{CH}$  : Main clock oscillation frequency

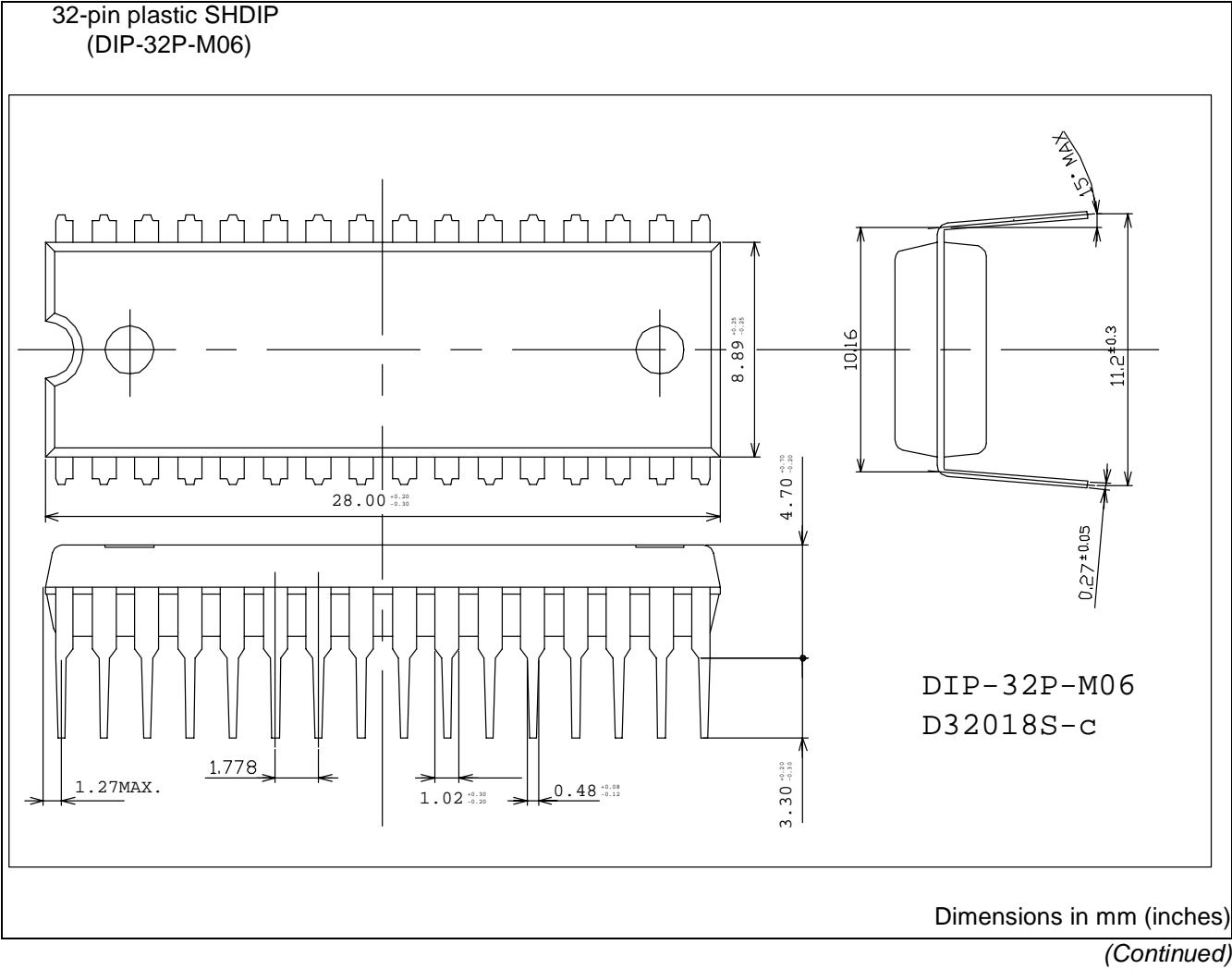
\* : Initial value to which the oscillation settling time bit (SYCC : WT1, WT0) in the system clock control register is set

\*\* : Reset pin output is available only if external reset pin option choose to use  $\overline{\text{RST}}$  external reset pin

## ■ ORDERING INFORMATION

Part number	Package	Remarks
MB89201-PSH	32-pin Plastic SHDIP (DIP-32P-M06)	
MB89N201-PSH	32-pin Plastic SHDIP (DIP-32P-M06)	P62 I/O pin is used
MB89N201A-PSH	32-pin Plastic SHDIP (DIP-32P-M06)	$\overline{\text{RST}}$ external reset pin is used
MB89V201-CFV	64-pin Plastic SHDIP (DIP-64P-M01)	

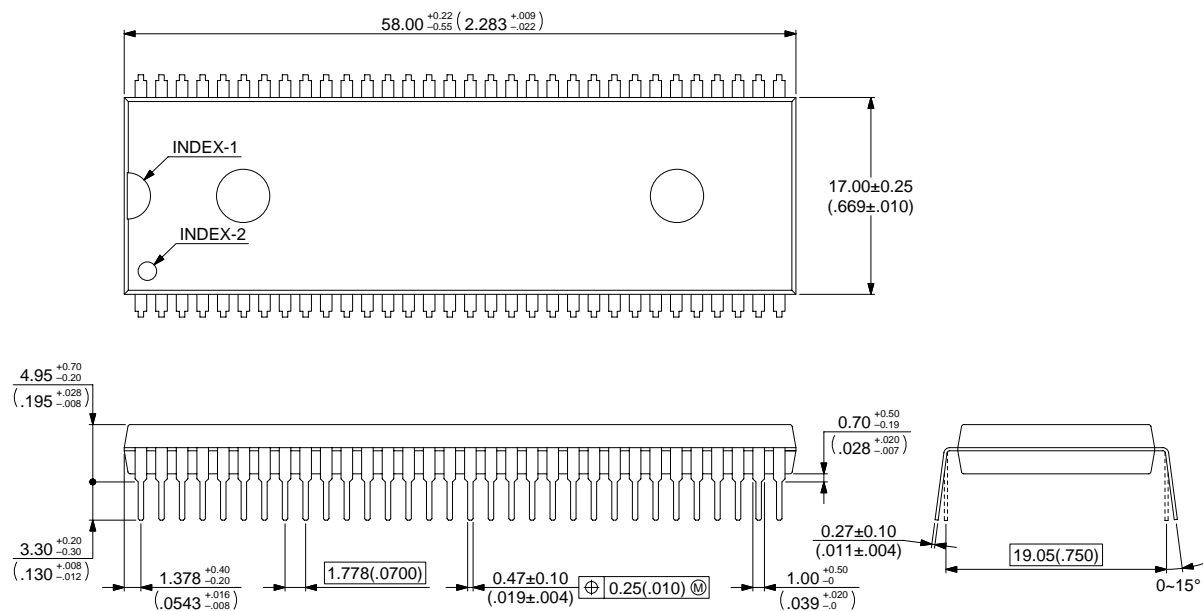
■ PACKAGE DIMENSIONS



# MB89201 Series

(Continued)

64pin plastic SHDIP  
(DIP-64P-M01)



© 2001 FUJITSU LIMITED D64001S-c-4-5

Dimensions in mm (inches)

# MB89201 Series

## FUJITSU LIMITED

*For further information please contact:*

### Japan

FUJITSU LIMITED  
Marketing Division  
Electronic Devices  
Shinjuku Dai-Ichi Seimei Bldg. 7-1,  
Nishishinjuku 2-chome, Shinjuku-ku,  
Tokyo 163-0721, Japan  
Tel: +81-3-5322-3353  
Fax: +81-3-5322-3386

<http://edevise.fujitsu.com/>

### North and South America

FUJITSU MICROELECTRONICS AMERICA, INC.  
3545 North First Street,  
San Jose, CA 95134-1804, U.S.A.  
Tel: +1-408-922-9000  
Fax: +1-408-922-9179

Customer Response Center  
Mon. - Fri.: 7 am - 5 pm (PST)  
Tel: +1-800-866-8608  
Fax: +1-408-922-9179

<http://www.fma.fujitsu.com/>

### Europe

FUJITSU MICROELECTRONICS EUROPE GmbH  
Am Siebenstein 6-10,  
D-63303 Dreieich-Buchschlag,  
Germany  
Tel: +49-6103-690-0  
Fax: +49-6103-690-122

<http://www.fme.fujitsu.com/>

### Asia Pacific

FUJITSU MICROELECTRONICS ASIA PTE LTD.  
#05-08, 151 Lorong Chuan,  
New Tech Park,  
Singapore 556741  
Tel: +65-6281-0770  
Fax: +65-6281-0220

<http://www.fmal.fujitsu.com/>

### Korea

FUJITSU MICROELECTRONICS KOREA LTD.  
1702 KOSMO TOWER, 1002 Daechi-Dong,  
Kangnam-Gu, Seoul 135-280  
Korea  
Tel: +82-2-3484-7100  
Fax: +82-2-3484-7111

<http://www.fmk.fujitsu.com/>

F0207

© FUJITSU LIMITED Printed in Japan

All Rights Reserved.

The contents of this document are subject to change without notice. Customers are advised to consult with FUJITSU sales representatives before ordering.

The information and circuit diagrams in this document are presented as examples of semiconductor device applications, and are not intended to be incorporated in devices for actual use. Also, FUJITSU is unable to assume responsibility for infringement of any patent rights or other rights of third parties arising from the use of this information or circuit diagrams.

The products described in this document are designed, developed and manufactured as contemplated for general use, including without limitation, ordinary industrial use, general office use, personal use, and household use, but are not designed, developed and manufactured as contemplated (1) for use accompanying fatal risks or dangers that, unless extremely high safety is secured, could have a serious effect to the public, and could lead directly to death, personal injury, severe physical damage or other loss (i.e., nuclear reaction control in nuclear facility, aircraft flight control, air traffic control, mass transport control, medical life support system, missile launch control in weapon system), or (2) for use requiring extremely high reliability (i.e., submersible repeater and artificial satellite).

Please note that Fujitsu will not be liable against you and/or any third party for any claims or damages arising in connection with above-mentioned uses of the products.

Any semiconductor devices have an inherent chance of failure. You must protect against injury, damage or loss from such failures by incorporating safety design measures into your facility and equipment such as redundancy, fire protection, and prevention of over-current levels and other abnormal operating conditions.

If any products described in this document represent goods or technologies subject to certain restrictions on export under the Foreign Exchange and Foreign Trade Law of Japan, the prior authorization by Japanese government will be required for export of those products from Japan.

