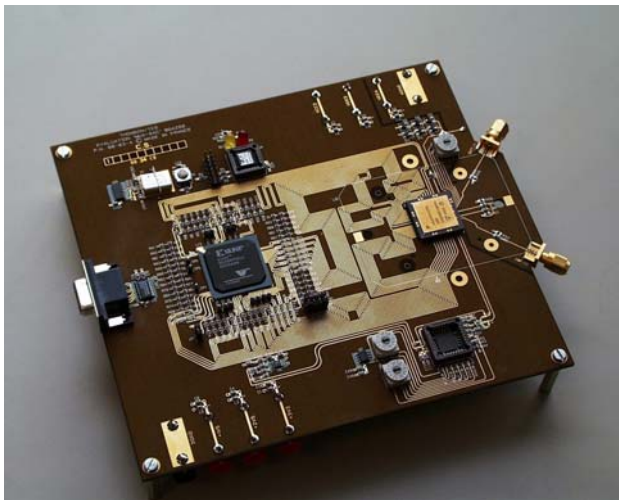


DESCRIPTION

The TSEV86101G2 Evaluation Board (EB) is a prototype board, which has been designed in order to facilitate the evaluation and characterization of the TS86101G2 MUXDAC device (CI-CGA-255 cavity up packaged device) over an output band of interest of up to 350MHz, at 700 Msp/s maximum conversion rate.

The TSEV86101G2 evaluation kit contains all Software and Hardware necessary to setup the board and perform its characterization.

The evaluation system of the TS86101G2 MUXDAC device consists in a configurable printed circuit board (the Evaluation board itself), including the soldered MUXDAC device (CI-CGA-255 package), an FPGA chip, a serial interface to a W95 computer and a user interface running on that platform.



MUXDAC 10 bit 1.2 Gsp/s Evaluation Board

TSEV86101G2

Summary

April 2002



Note: This is a summary Document. A complete document is available under NDA. For more information, please contact your local Atmel Sales Office.