

SHINDENGEN

Schottky Rectifiers (SBD)

Modules

D180SC4M

40V 180A

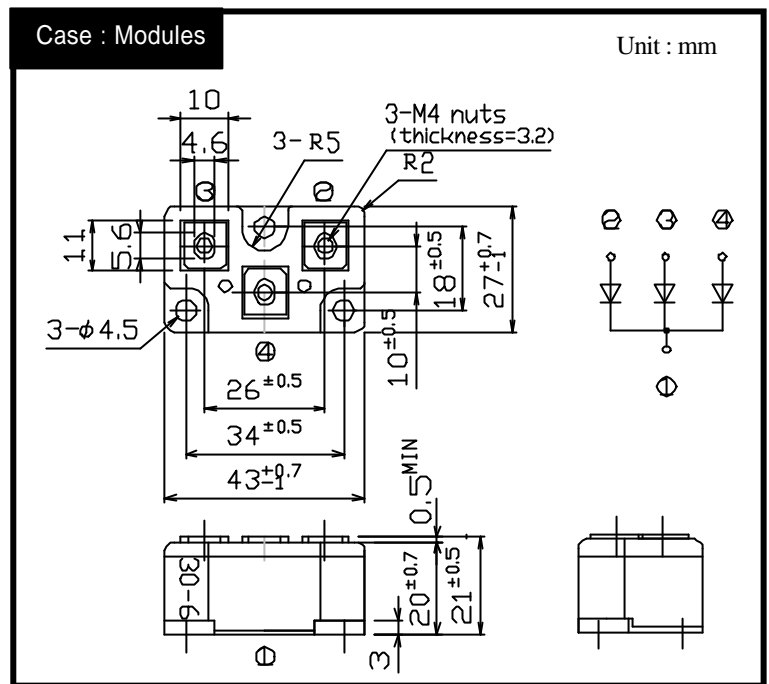
FEATURES

- High capacity modules
- Low VF
- Small j_c

APPLICATION

- Big switching power supply
- DC/DC converter
- Mainframe
- IC tester

OUTLINE DIMENSIONS



RATINGS

Absolute Maximum Ratings (If not specified $T_c=25$)

Item	Symbol	Conditions	Ratings	Units
Storage Temperature	T_{stg}		-40 ~ 125	
Operating Junction Temperature	T_j		125	
Maximum Reverse Voltage	V_{RM}		40	V
Repetitive Peak Surge Reverse Voltage	V_{RRSM}	Pulse width 100ms, duty 1/100	48	V
Average Rectified Forward Current	I_o	50Hz sine wave, R-load, Rating for each diode $I_o/3$, $T_c=83$	180	A
Peak Surge Forward Current	I_{FSM}	50Hz sine wave, Non-repetitive 1cycle peak value, Rating of per diode $T_j=125$	800	A
Mounting Torque	TOR		1.7	N·m

Electrical Characteristics (If not specified $T_c=25$)

Item	Symbol	Conditions	Ratings	Units
Forward Voltage	V_F	$I_F=60A$, Pulse measurement, Rating of per diode	Max.0.58	V
Reverse Current	I_R	$V_R=V_{RM}$, Pulse measurement, Rating of per diode	Max.40	mA
Junction Capacitance	C_j	$f=1MHz$, $V_R=10V$, Rating of per diode	TYP 2.1	nF
Thermal Resistance	j_c	junction to case	Max.0.25	/W
	cf	case to heatsink, Mounting torque = 1.7N·m	Max.0.12	