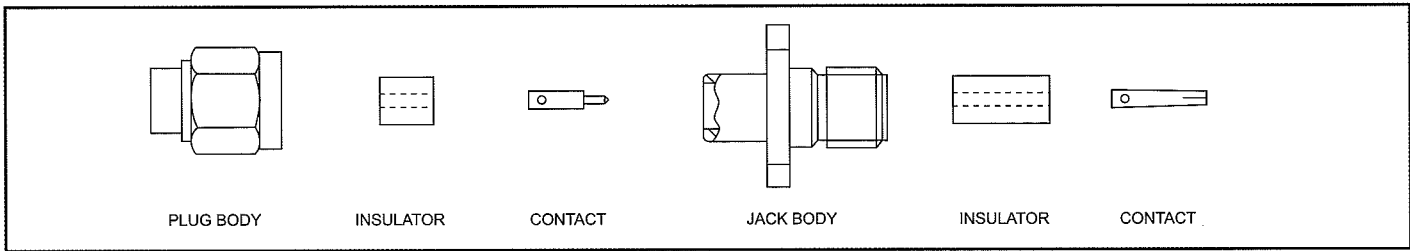


AI-252 & AI-278

SMA Straight Connectors, Direct Solder
(Separate Center Contact) Type for Semi-Rigid Cable



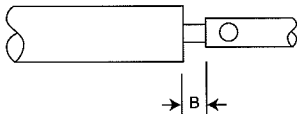
STEP 1 - 2



1. Cut cable end square. Trim the cable outer conductor and dielectric as shown taking care not to nick the center conductor. Deburr outer conductor at point of cut.

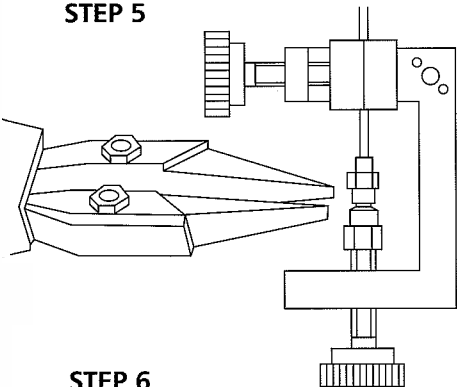
Assembly Instruction No		Configuration		A	B
AI-252	Plug	3,18 +/- 0,25	(.125 +/- .010)	0,38 (.015)	
AI-278	Jack	2,54 +/- 0,25	(.100 +/- .010)	0,38 (.015)	

STEP 3



2. Tin center conductor (DO NOT OVER TIN).
3. Solder contact to center conductor ensuring that dimension shown is maintained. Remove any excess solder.

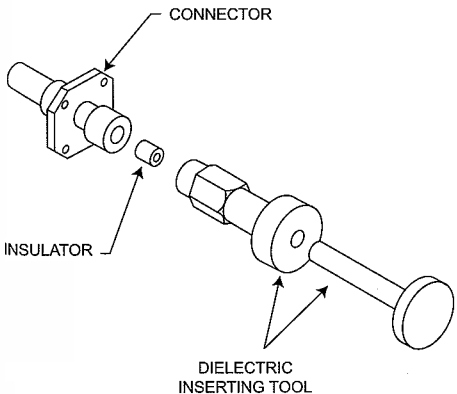
STEP 5



4. Clean housing area of outer conductor with abrasive paper and clean in a suitable agent.
5. Place connector assembly in Assembly Jig T1848, or other suitable clamping arrangement, with contact in locator tool as shown.

Tighten screw to secure cable between inserts then tighten locator to seat cable firmly. Place solder ring around cable adjacent to connector body and heat the connector body using an appropriate heat source (solder tongs with variable control). Apply sufficient heat for solder to flow but using minimum heat cycle.

STEP 6



6. Using dielectric insertion Tool T2508 (for plugs) or T2509 (for jacks), press insulator into body. Assembly is now ready for use.

N.B. Various body configurations can apply.

Dimensions are shown: mm (inch)
Specifications and dimensions subject to change