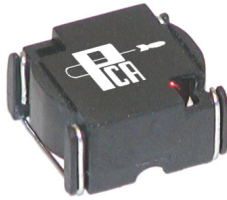


EPI B44 Series



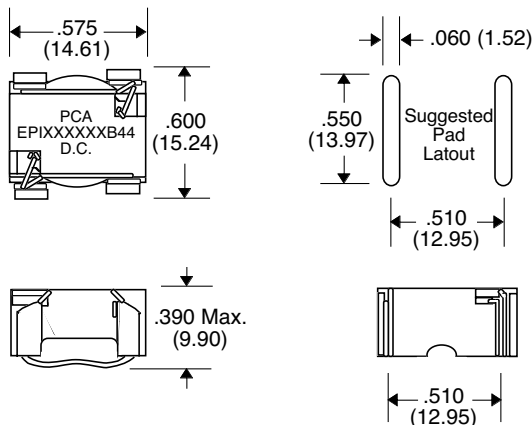
- 150 KHz Switching Frequency for National's LM259X Series
- Low loss material ensures operation in high frequency switching converters, such as Buck, Boost or as output averaging filter inductor
- Also suitable for use in high quality filter applications
- 500 KHz Switching Frequency

Primary Specification

Part Number	National Semiconductor Chip	Induct. ($\mu\text{H} \pm 15\%$) @ 0 Adc	DCR (Ω Typ.)	Induct. ($\mu\text{H} \pm 15\%$) @ Idc	Idc (Amps)	Vt1 (V- μSec) @ 500 KHz	Vt2 (V- μSec) @ 150 KHz	Temp.Rise @ Vt1 °C (Typ.)	Temp.Rise @ Vt2 °C (Typ.)
EPI0L8103B44	---	0.92	.0036	.82 \pm 20%	10.0	1.2	---	38	---
EPI1L5902B44	---	1.60	.0048	1.5 \pm 20%	9.0	1.6	---	40	---
EPI2L2802B44	---	2.55	.0061	2.2 \pm 20%	8.0	2.0	---	40	---
EPI3L3702B44	---	4.31	.0079	3.3	7.0	2.6	---	40	---
EPI4L5602B44	---	5.74	.009	4.5	6.0	3.0	---	35	---
EPI6L5502B44	---	8.26	.014	6.5	5.0	3.6	---	37	---
EPI100452B44	---	13.5	.022	10	4.5	4.6	---	45	---
EPI150352B44	LM259X-L34	20.0	.027	15	3.5	5.6	13.3	36	38
EPI220312B44	LM259X-L33	29.5	.043	22	3.1	6.8	16.7	41	43
EPI330252B44	LM259X-L32	45.0	.065	33	2.5	8.4	20.0	41	43
EPI470222B44	LM259X-L31	63.75	.077	47	2.2	10.0	24.7	39	41
EPI560202B44	---	77.0	.121	56	2.0	11.0	---	44	---
EPI680182B44	LM259X-L30	95.0	.122	68	1.8	12.2	30	40	42
EPI101152B44	LM259X-L29	140	.182	100	1.5	14.8	36.7	41	43
EPI151122B44	LM259X-L28	202	.284	150	1.2	17.8	43.3	41	43
EPI221102B44	LM259X-L27	303	.427	220	1.0	21.8	53.3	42	45
EPI331801B44	LM259X-L26	451	.650	330	0.8	26.6	65.3	42	44
EPI471701B44	---	645	.778	470	0.7	31.8	---	39	---
EPI681581B44	---	930	1.20	680	0.58	38.2	---	41	---
EPI102481B44	---	1372	1.45	1000	0.48	46.4	---	36	---

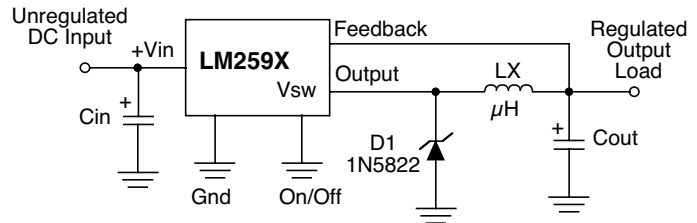
• Core Loss at Ref. Vt1 : 45 mW • Core Loss at Ref. Vt2 : 72 mW •

Package B44



Note: Coplanarity within .005" Max.

Application



Unless Otherwise Specified Dimensions are in Inches /mm $\pm .010 / .25$