



SAW Components

Data Sheet B 4030





SAW Components

B 4030

Low Loss Filter

919,55 MHz

Data Sheet

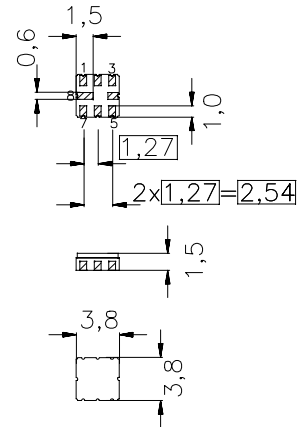
Ceramic package **QCC8B**

Features

- Low-loss IF filter for DAB
- Low insertion attenuation
- High image frequency suppression
- No matching network required for operation at 50 Ω
- Package for **Surface Mounted Technology (SMT)**
- Hermetically sealed ceramic SMD package

Terminals

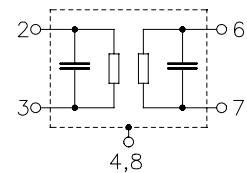
- Ni, gold-plated



Dimensions in mm, approx. weight 0.07 g

Pin configuration

- 2 Input
- 3 Balanced Input
- 6 Output
- 7 Balanced Output
- 4,8 Case - ground
- 1,5 To be grounded



Type	Ordering code	Marking and Package according to	Packing according to
B4030	B39921-B4030-Z810	C61157-A7-A46	F61074-V8037-Z000

Electrostatic **Sensitive Device (ESD)**

Maximum ratings

Operable temperature range	T	- 40 / + 85	°C	
Storage temperature range	T_{stg}	- 40 / + 85	°C	
DC voltage	V_{DC}	3	V	
Source power	P_s	0	dBm	source impedance 50 Ω



SAW Components

B 4030

Low Loss Filter

919,55 MHz

Data Sheet

Characteristics

Operating temperature range : $T = 25 \text{ }^\circ\text{C}$
 Terminating source impedance: $Z_S = 50 \text{ } \Omega$
 Terminating load impedance: $Z_L = 50 \text{ } \Omega$

		min.	typ.	max.	
Center frequency	f_C	—	919.55	—	MHz
Maximum insertion attenuation	α_{\max}	—	3.0	4.5	dB
918.8 ... 920.3 MHz					
Amplitude ripple (p-p)	$\Delta\alpha$	—	0.2	1.5	dB
918.8 ... 920.3 MHz					
Attenuation	α_{\min}	40	50	—	dB
	0.0 ... 900.0 MHz				
		40	50	—	dB
940.0 ... 1000.0 MHz					
Temperature coefficient of frequency	TC_f	—	-30	—	ppm/K



SAW Components

B 4030

Low Loss Filter

919,55 MHz

Data Sheet

Characteristics

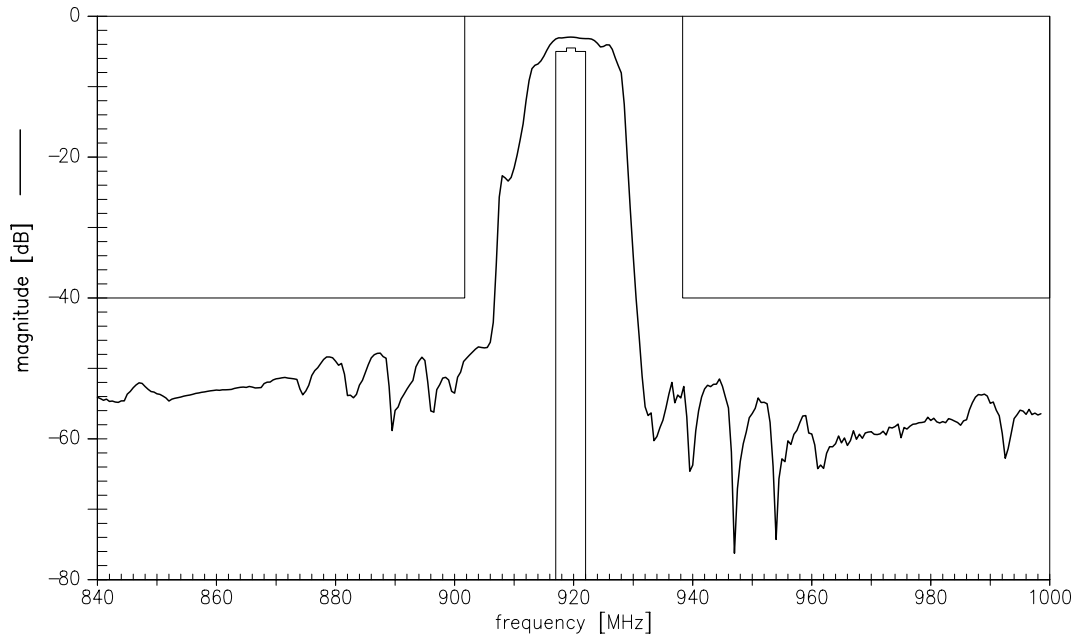
Operating temperature range : $T = -40$ to $+85$ °C
 Terminating source impedance: $Z_S = 50 \Omega$
 Terminating load impedance: $Z_L = 50 \Omega$

		min.	typ.	max.	
Center frequency	f_C	—	919.55	—	MHz
Maximum insertion attenuation	α_{max}	—	3.5	5.0	dB
918.8 ... 920.3 MHz					
Amplitude ripple (p-p)	$\Delta\alpha$	—	0.7	2.0	dB
918.8 ... 920.3 MHz					
Attenuation	α_{min}	40	50	—	dB
	0.0 ... 900.0 MHz				
		40	50	—	dB
940.0 ... 1000.0 MHz					
Temperature coefficient of frequency	TC_f	—	-30	—	ppm/K

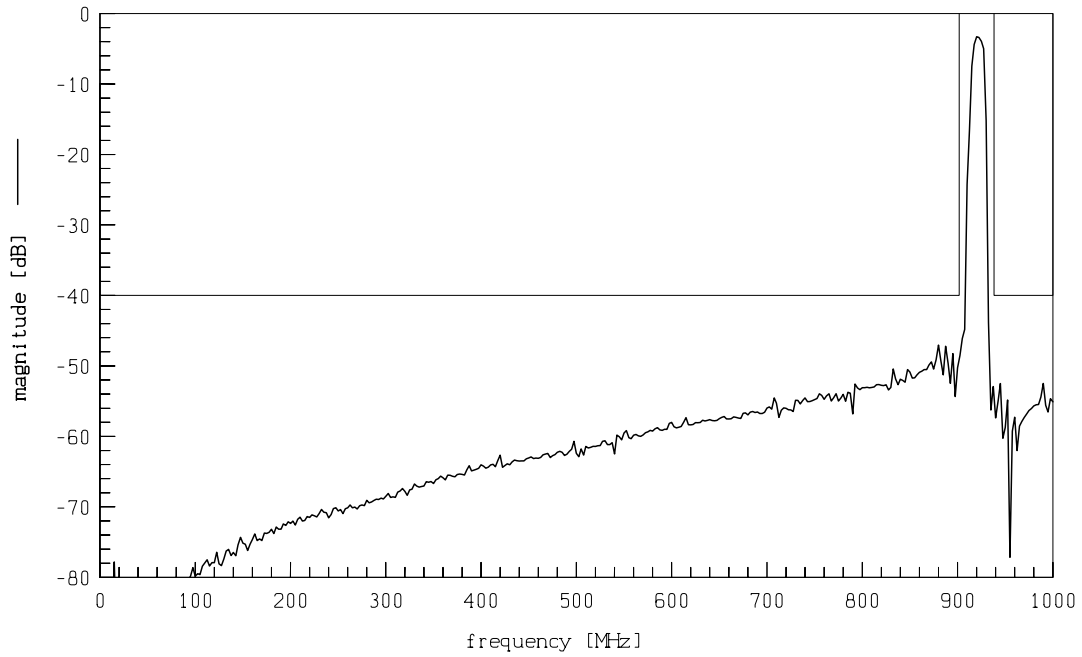


Data Sheet

Transfer function



Transfer function (wideband)





SAW Components

B 4030

Low Loss Filter

919,55 MHz

Data Sheet

Published by EPCOS AG
Surface Acoustic Wave Components Division, OFW E UE
P.O. Box 80 17 09, D-81617 München

© EPCOS AG 1999. All Rights Reserved.

As far as patents or other rights of third parties are concerned, liability is only assumed for components per se, not for applications, processes and circuits implemented within components or assemblies.

The information describes the type of component and shall not be considered as assured characteristics.

Terms of delivery and rights to change design reserved.

For questions on technology, prices and delivery please contact the sales offices of EPCOS AG or the international representatives.

Due to technical requirements components may contain dangerous substances. For information on the type in question please also contact one of our sales offices.