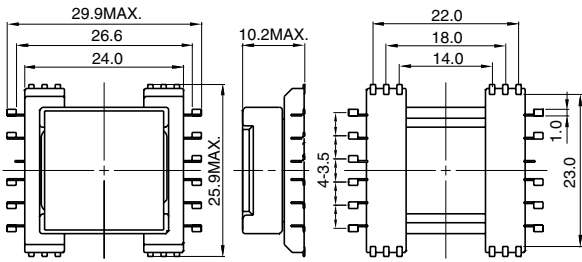


CEPH199

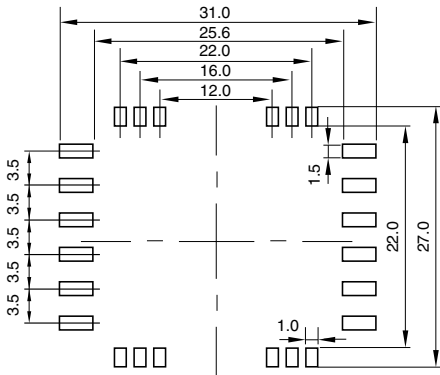


Construction

● Dimensions(mm)



● Recommended land patterns(mm)

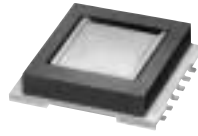


■ Application
DC/DC converter transformers

● Specifications

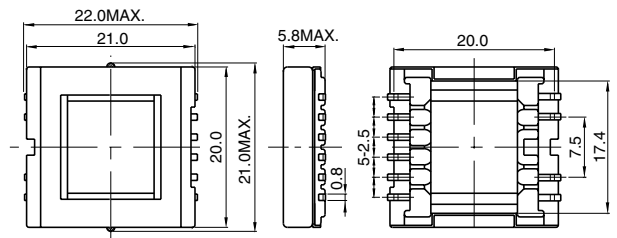
| Max. Operation frequency | Max. Operating power |
|--------------------------|--|
| 500kHz | 3.2W @ 100kHz 7.5W @ 300kHz 11.0W @ 500kHz |

CEPH205

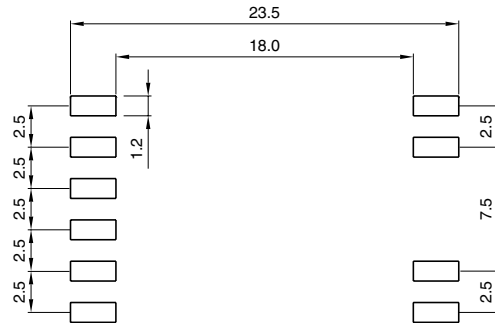


Construction

● Dimensions(mm)



● Recommended land patterns(mm)



■ Application
EL inverter transformers
DC/DC converter transformers
PDAs
Portable telephones

● Specifications

| Max. Operation frequency | Max. Operating power |
|--------------------------|--|
| 500kHz | 800mW @ 100kHz 2.5W @ 300kHz 4.2W @ 500kHz |