

Bus Converter

48V Input / 12V Output / 27A



07CM-27S12L PRELIMINARY

- Ideal for Intermediate Bus Architectures
- Industry standard quarter-brick package
- Up to 300W at 95% efficiency
- 1500V isolation
- Safety Agency Approvals



Description

The 07CM-27S “Cimarron” Series are isolated DC/DC converters that operate from a nominal 48V source. These converters are intended to provide isolation and step down to generate an intermediate bus for the purpose of powering non-isolated Point-of-Load (POL) converters. These units will provide up to 300W of output power from a 48V input. These units are designed to be highly efficient and very low cost and are thus unregulated. The downstream POL converters will provide the precise regulation required by the load. Features include remote on/off, over current protection and undervoltage lockout. These converters are provided in an industry standard quarter-brick package.

Part Selection

Output Voltage	Input Voltage	Max. Output Current	Max. Output Power	Typical Efficiency	Model Number
12V	48V	27A	300W	95%	07CM-27S12L

Input Specifications

Parameter	Min	Typ	Max	Notes
Input Voltage Range	36 VDC		55 VDC	
Input Current (no load)			110mA	
Input Current (full load)			6.82A	
Reflected Ripple Current (pk-pk)			50mA rms 100mA pk-pk	with a 12uH source inductor at nom. Vin and full load.
Undervoltage Lockout				
Turn-on		35.8 VDC		
Turn off		33.8 VDC		
Overvoltage Lockout		57.1 VDC		

Output Specifications

Parameter	Min	Typ	Max	Notes
Output Voltage				Setpoint at no load.
36Vin		8.7V		
48Vin		11.7V		
55Vin		13.3V		
Output Current	0A		27A	
Output Power			300W	
Load Regulation			0.4V	
Ripple and Noise			150mV pk-pk	0 to 20MHz Bandwidth Use 1.0uF ceramic cap and 100uF/50mOhm tantalum on output
Load Capacitance	100uF (50mohm)		3000uF	

Bus Converter

48V Input / 12V Output / 27A



Output Specifications (continued)

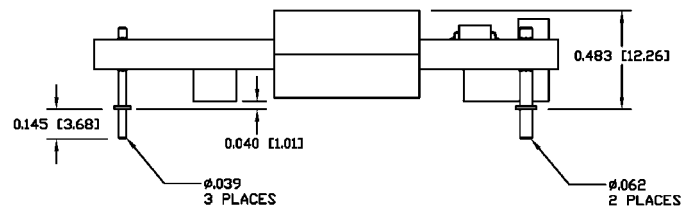
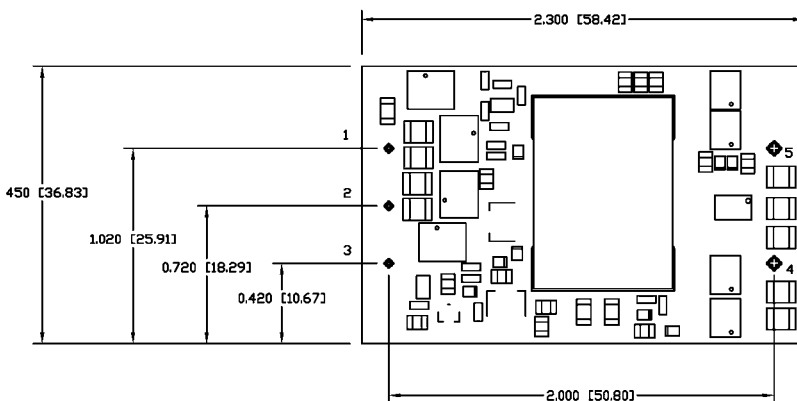
Parameter	Min	Typ	Max	Notes
Transient Response Max deviation Recovery to within $\pm 1\%$		150mV 50uS	250mV 100uS	di/dt = 0.1A/uS, Vin = 48VDC Ta = 25°C, 25% load change.

General Specifications

Parameter	Specification
Switching Frequency	96kHz typical (fixed)
Dimensions	inches 2.28 x 1.45 x 0.50 mm 57.9 x 36.8 x 12.7
Weight	TBD
Operating Temperature	-40°C to 70°C
Non-Operating Temperature	-55°C to 125°C
Overtemp Shutdown	120°C (10°C hysteresis) Note: measured on Q4
Protection Features	Latching Short circuit 110% to 125% max Io Over current Undervoltage UVLO Vin < 35.0 Overvoltage OVSD Vin > 57.0
Remote On/Off	Active Low (Optional Active High) Turn on delay 2.7ms (typ.) Output voltage rise time 4.3ms (typ.)
Safety Agency Approvals (pending)	UL / cUL Recognized Certified to EN60950

Pin Connections

Pin	Function
1	+ Vin
2	Remote On/Off
3	- Vin
4	- Vout
5	+ Vout



©2003 Bel Fuse Inc. Specifications subject to change without notice. 121003

CORPORATE

Bel Fuse Inc.
206 Van Vorst Street
Jersey City, NJ 07302
Tel 201-432-0463
Fax 201-432-9542
www.belfuse.com

FAR EAST

Bel Fuse Ltd.
8F/ 8 Luk Hop Street
San Po Kong
Kowloon, Hong Kong
Tel 852-2328-5515
Fax 852-2352-3706
www.belfuse.com

EUROPE

Bel Fuse Europe Ltd.
Preston Technology Management Centre
Marsh Lane, Suite G7, Preston
Lancashire, PR1 8UD, U.K.
Tel 44-1772-556601
Fax 44-1772-888366
www.belfuse.com