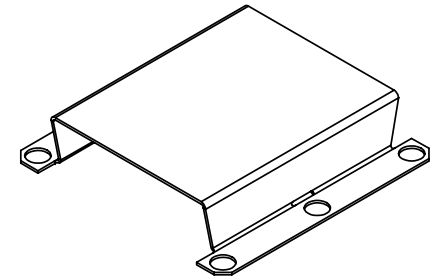
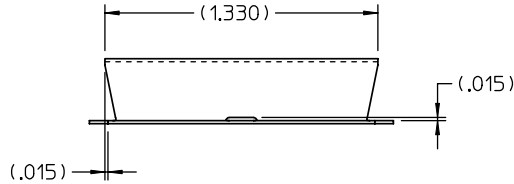
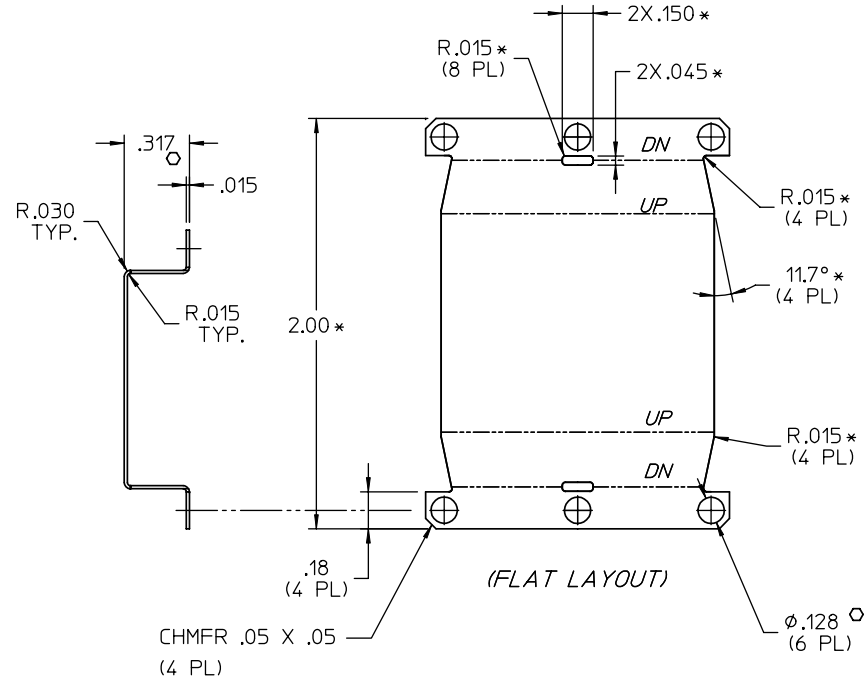
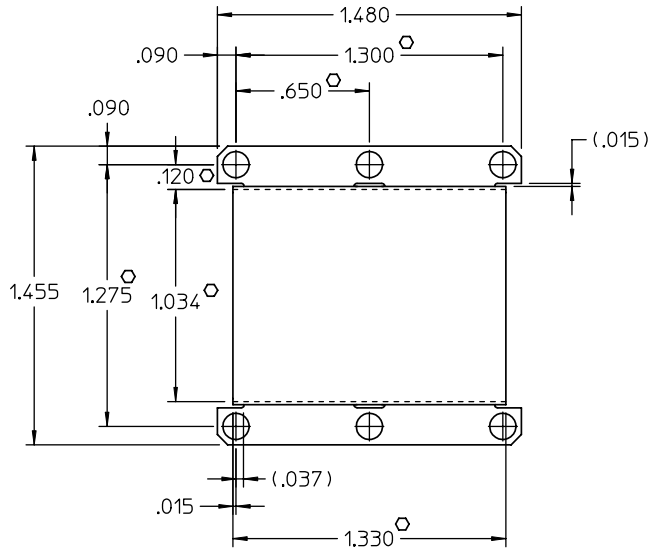


**VICOR CONFIDENTIAL**

THIS DOCUMENT AND THE DATA DISCLOSED  
HEREIN OR HEREWITH IS NOT TO BE REPRODUCED,  
USED, OR DISCLOSED IN WHOLE OR IN PART  
TO ANYONE WITHOUT PERMISSION OF VICOR CORP.

| REV. | DESCRIPTION                         | DATE        | APPROVED |
|------|-------------------------------------|-------------|----------|
| #1   | DRAWN FOR DEVELOPMENT               | 11/10/00    | GCK      |
| #2   | REVSD PER MRKUP                     | AK 02/09/01 | GCK      |
| #3   | MATL WAS CRS; FIN WAS BRIGHT NICKEL | RCM 3/1/01  | GCK      |
| #4   | CHMFR .05 X .05 WAS R .09           | AK 04/10/01 | GCK      |
| #5   | REVISED PER MARK-UP                 | PEI 9/13/01 | GCK      |



**NOTES:**

1. MATERIAL: ALUMINUM- (.015) THK, 5052
2. REMOVE BURRS & SHARP EDGES
3. "\*" DIMENSIONS ARE NOT FOR VICOR INSPECTION.
4. "o" DENOTES CRITICAL CHARACTERISTICS FOR LOT INSPECTION.
5. FINISH: CLEAR CHROMATE

|  |                  |             |                   |                  |           |
|--|------------------|-------------|-------------------|------------------|-----------|
| DRAWN BY<br><i>RCM</i>   | DATE<br>11/10/00 |             |                   |                  |           |
| <small>UNLESS OTHERWISE SPECIFIED<br/>DIMENSIONS ARE IN INCHES-<br/>TOLERANCES ARE:<br/>FRACTIONS DECIMALS ANGLES<br/>*1/64 .XX=+.01 *°<br/>.XXX=+.005</small> |                  |             |                   |                  |           |
| <b>MODULE SHIELD<br/>MICRO</b>   |                  | SIZE<br>C   | FSCM NO.<br>67131 | DWG NO.<br>21312 | REV<br>#5 |
| <small>THIRD ANGLE PROJECTION</small><br>  |                  | SCALE<br>2X | SHEET 1 OF 1      |                  |           |
| <small>DO NOT SCALE DRAWING</small>  |                  |             |                   |                  |           |