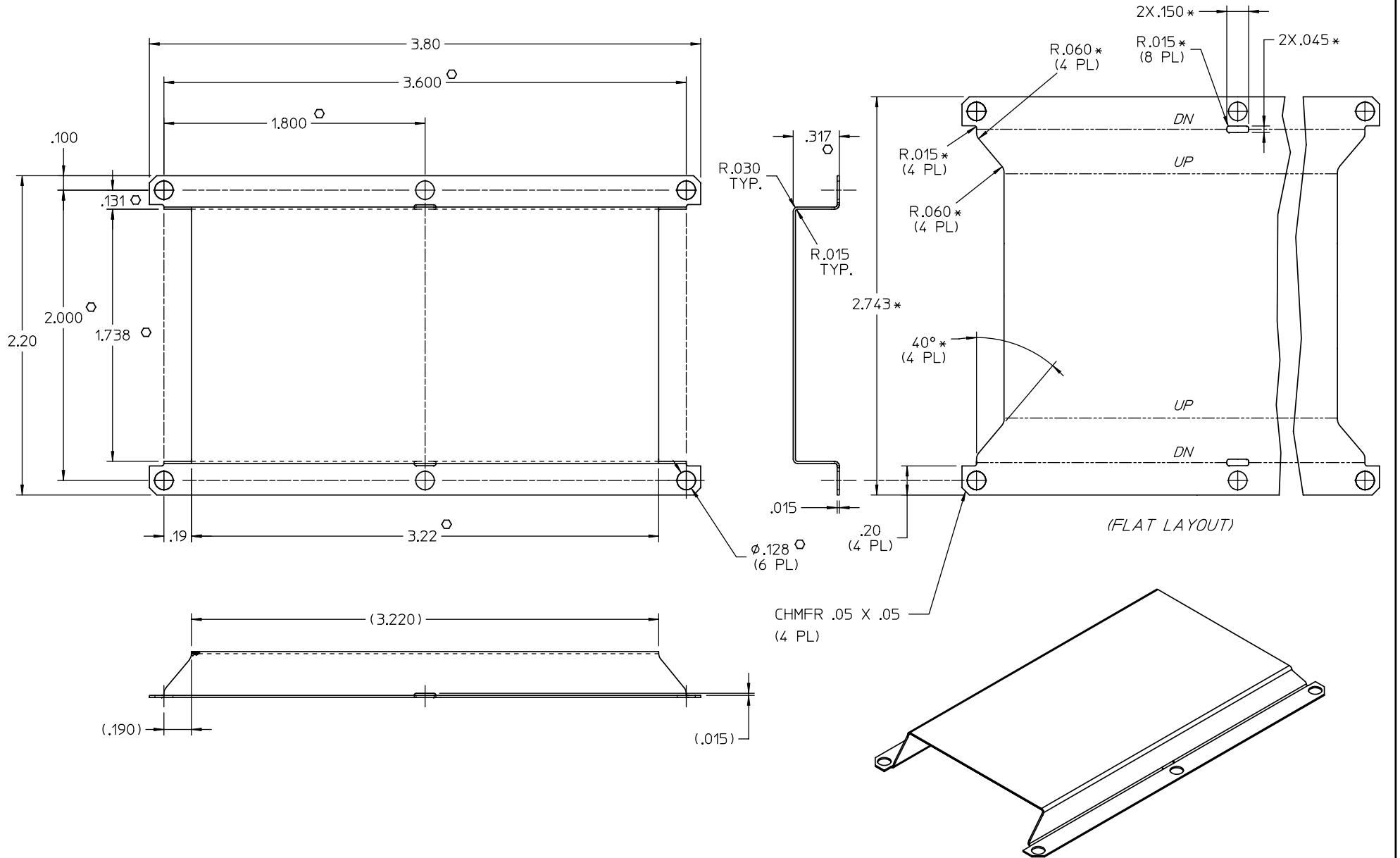


THIS DOCUMENT AND THE DATA DISCLOSED
HEREIN OR HEREWITH IS NOT TO BE REPRODUCED,
USED, OR DISCLOSED IN WHOLE OR IN PART
TO ANYONE WITHOUT PERMISSION OF VICOR CORP.

REV.	DESCRIPTION	DATE	APPROVED
#3	REVSD PER MRKUP	AK 02/08/01	GCK
#4	MATL WAS CRS; FIN WAS BRIGHT NICKEL	RCM 3/1/01	GCK
#5	CHMFR .05 X .05 WAS R .10	AK 4/10/01	GCK
#6	REVISED PER MARK-UP	PEI 9/14/01	GCK



NOTES:

1. MATERIAL: ALUMINUM- (.015) THK, 5052
2. REMOVE BURRS & SHARP EDGES
3. "*" DIMENSIONS ARE NOT FOR VICOR INSPECTION.
4. "O" DENOTES CRITICAL CHARACTERISTICS FOR LOT INSPECTION.
5. FINISH: CLEAR CHROMATE

DRAWN BY RCM	DATE 11/10/00			
<small>UNLESS OTHERWISE SPECIFIED DIMENSIONS ARE IN INCHES- TOLERANCES ARE: FRACTIONS DECIMALS ANGLES +1/64 .XX* +.01 *° .XXX*+.005</small>				
THIRD ANGLE PROJECTION 	SIZE C	FSCM NO. 67131	DWG NO. 21314	REV #6
DO NOT SCALE DRAWING	SCALE 2X	SHEET 1 OF 1		