

- Designed to meet UL1950 and IEC 950 safety requirements
- UL file number: E150991
- Operating temperature range: -40° C to +85° C
- Meets IEC 695, 2-2 flammability requirements
- PWB Process Capability: standard printed wiring board assembly techniques, total-immersion cleaning
- Reliability testing: shock, vibration, temperature cycling, temperature - humidity - bias

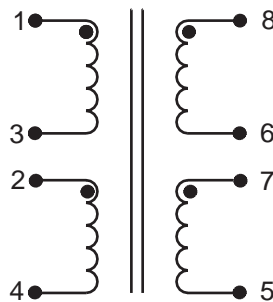
ELECTRICAL SPECIFICATIONS AT 25° C

Part Number	Package	Turns Ratio ¹		Inductance ² μH ± 9%	DCR ¹ Ω max		Leakage Inductance ³ μH max	Direct Capacitance ¹ pF max	Dielectric Rating ¹ Vrms min
		(1-3) : (8-5)	(2-4) : (8-5)		(1-3)	(1-4)			
2810H	SMD	0.354 : 1	1 : 1	55	2.6	2.3	8	30	1500

1. connect terminals 2 to 3 & 6 to 7
2. measured at 10 kHz, 0.1 Vac, connect terminals 6 to 7
3. connect terminals 2 to 3 & 6 to 7, short terminals 5, 6, 7 & 8

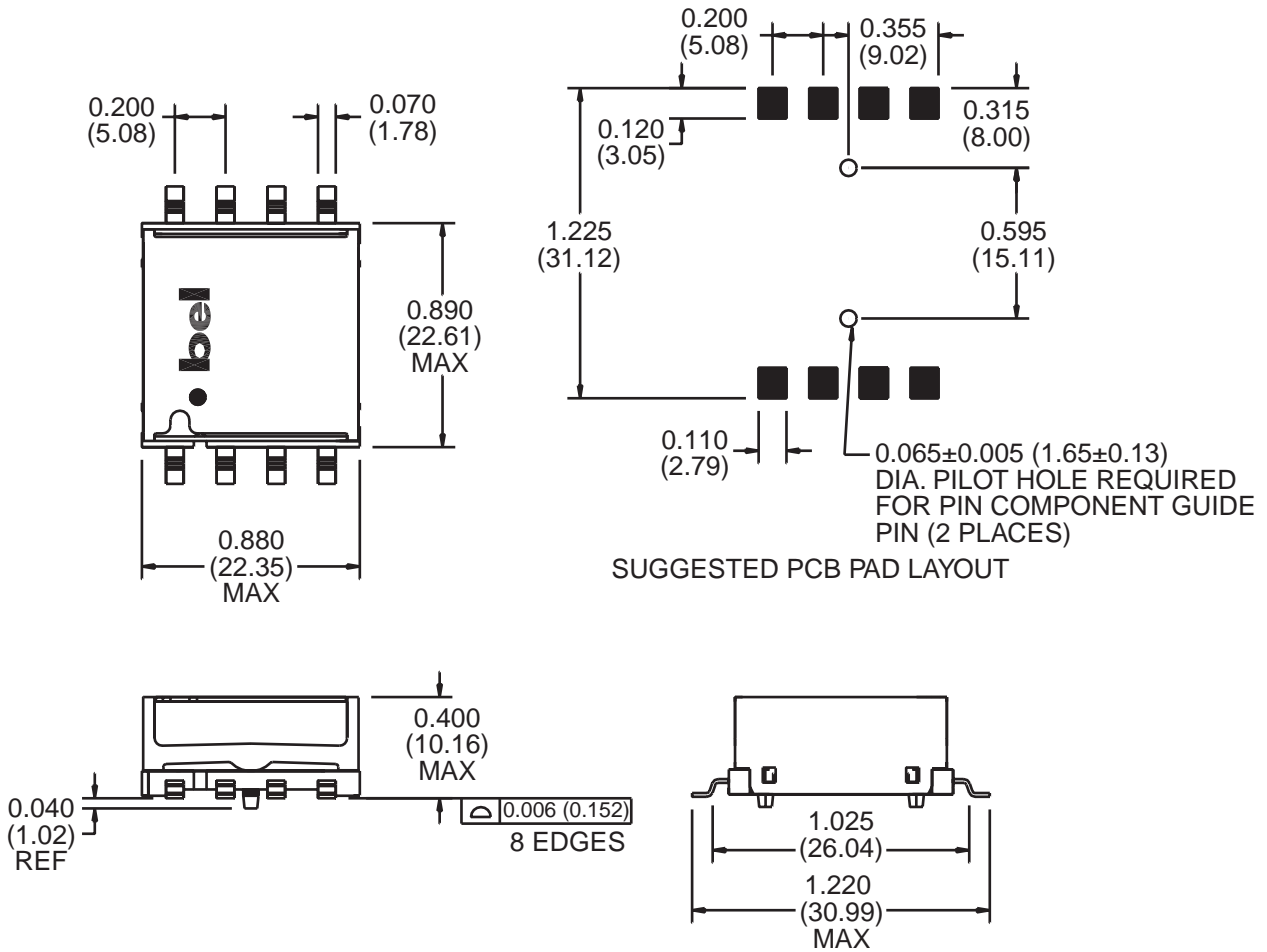
SCHEMATIC

2810H



MECHANICAL

2810H



©2000 Bel Fuse Inc. Specifications subject to change without notice. 04.00

CORPORATE

Bel Fuse Inc.
198 Van Vorst Street
Jersey City, NJ 07302
Tel 201-432-0463
Fax 201-432-9542
www.belfuse.com

FAR EAST

Bel Fuse Ltd.
8F / 8 Luk Hop Street
San Po Kong
Kowloon, Hong Kong
Tel 852-2328-5515
Fax 852-2352-3706
www.belfuse.com

EUROPE

Bel Fuse Europe Ltd.
Preston Technology Management Centre
Marsh Lane, Suite G7, Preston
Lancashire, PR1 8UD, U.K.
Tel 44-1772-556601
Fax 44-1772-888366
www.belfuse.com