

# 7334L2622F13LF

Lead Free Version (Optional)

Plating : contact area  
 2: 0.4 µm Gold  
 5: 2.0 µm Gold

Number of contacts :  
 2: 8 contacts ISO  
 3: 16 contacts ISO + AFNOR

### GENERAL:

This L26 connector uses a "sliding" contact technology suitable for most applications. It has been designed for easy mounting on the PCB.

### ELECTRICAL PROPERTIES:

Insulation resistance : 5000 MΩ min  
 Dielectric withstanding : 750 Vrms min  
 Current carrying capacity : 10µA min. 1A max  
 Contact resistance : 100mΩ max  
 Card sensor type : Normally closed

### MECHANICAL PROPERTIES:

Contact Normal force : 0.6 N max (EMV Standard)  
 Insertion force : 10 N max  
 Extraction force : 1 N min  
 Durability : 10000 card insertions with 0.4µm Gold  
 According to UTE C93-421

### MATERIAL:

Housing : PBT 30 % Glass Filled, Colour Black, Rated UL94V0  
 Contacts and switch : Phosphor bronze  
 Plating : Nickel all over with 3µm mini on contact area  
 Gold on contact area : see catalogue part number key  
 Tin/Lead 3 µm mini on soldertails  
**FOR LEAD FREE PLATING :**  
 Matte Tin 3µm mini on solder tail in place of Tin/Lead  
 Bare edge allowed

### ENVIRONMENT:

Operating temperature: -20°C / +70°C  
 Storage temperature: -40°C / +85°C  
 Printed Circuit Board thickness : 1.6mm

### REFERENCE DOCUMENTS:

Product specification VGN 11596  
 Packaging Specification VGN 11619

### LEAD FREE VERSION:

"This product meets European Union Directives and other country regulations as described in GS-22-008"

The housing will withstand exposure to 260°C peak temperature for 10seconds in a wave solder application with a 1.6mm minimum thick circuit board. Use protective adhesive tape (Kapton or Teflon) or protective metallic devices on the areas which are directly exposed to wave soldering as it is used in classical leaded wave soldering

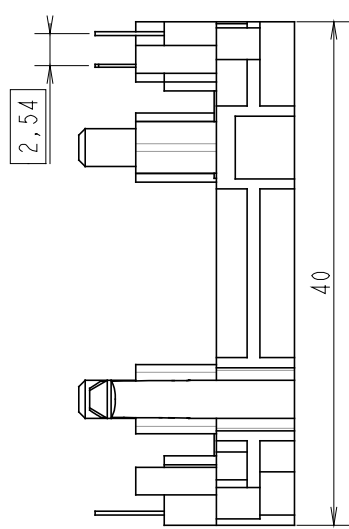
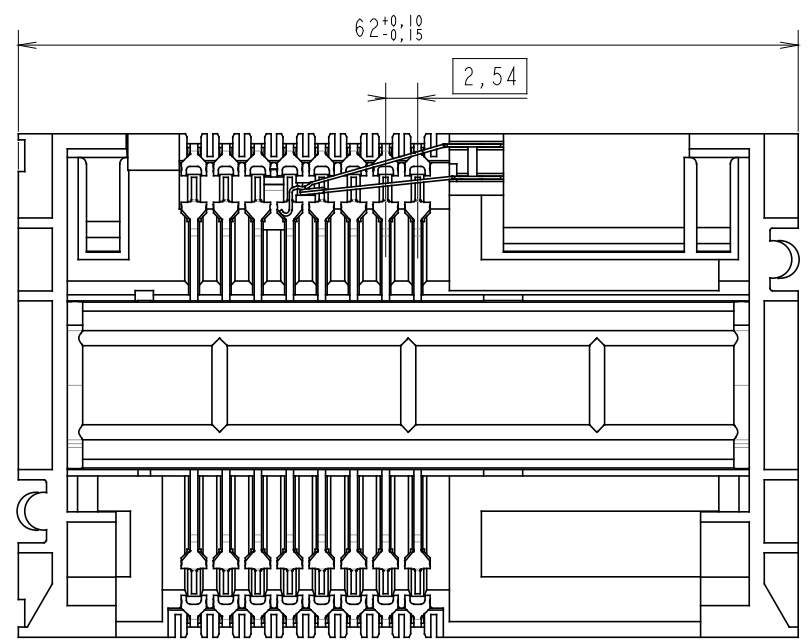
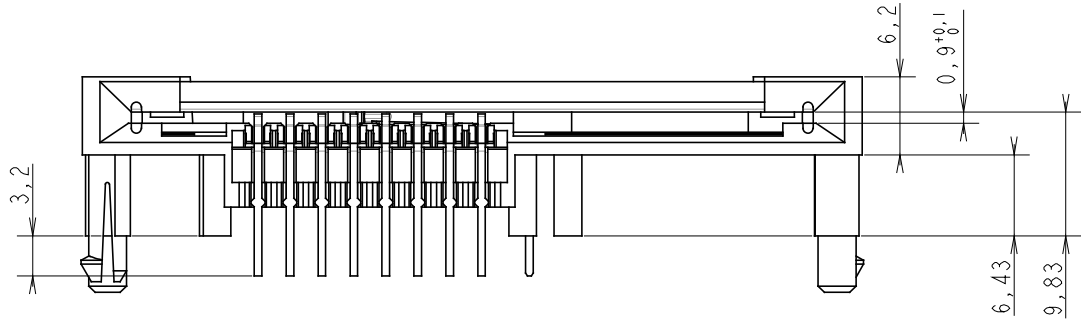
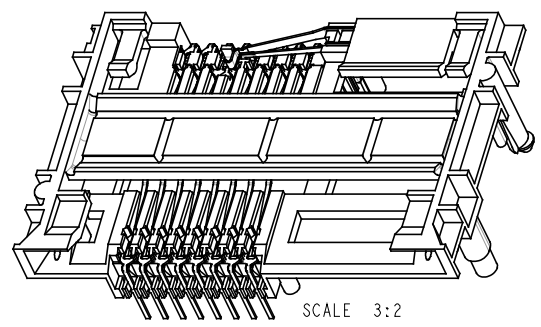
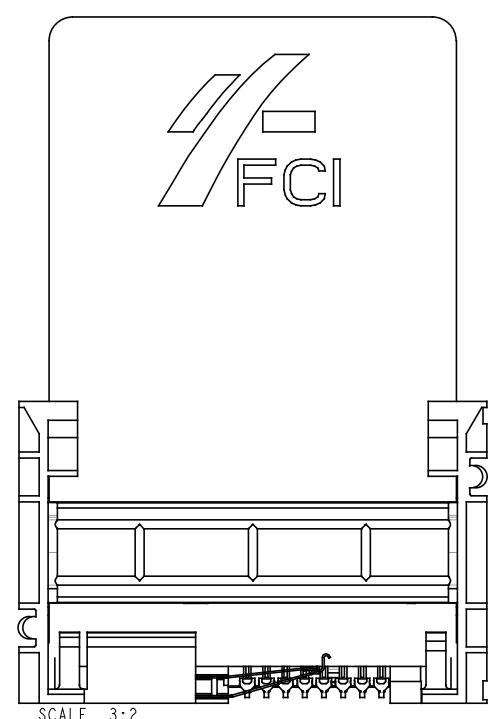
### EUROPEAN PROJECTION

<b>FCI</b> www.fciconnect.com		surface <input checked="" type="checkbox"/> ISO 1302	tolerance <input checked="" type="checkbox"/> ISO 406 ISO 1101	projection	mm
Dr	DILIPTHOMAS	02.04.30	Product family	5S2F	size A2
Eng	F TISSERAND	02.04.30	Spec ref	SEE NOTES	Scale 5:2
Chr	N.TWENCY	05/05/10	Material	SEE NOTES	ECN 105-0071
Appr	KS	05/05/10			
L26 TYPE F13				dwg no	VJW_54825
catalog no				See Table	CUSTOMER COPY
				Rev.	C

General Tolerances: ± 0.2 mm

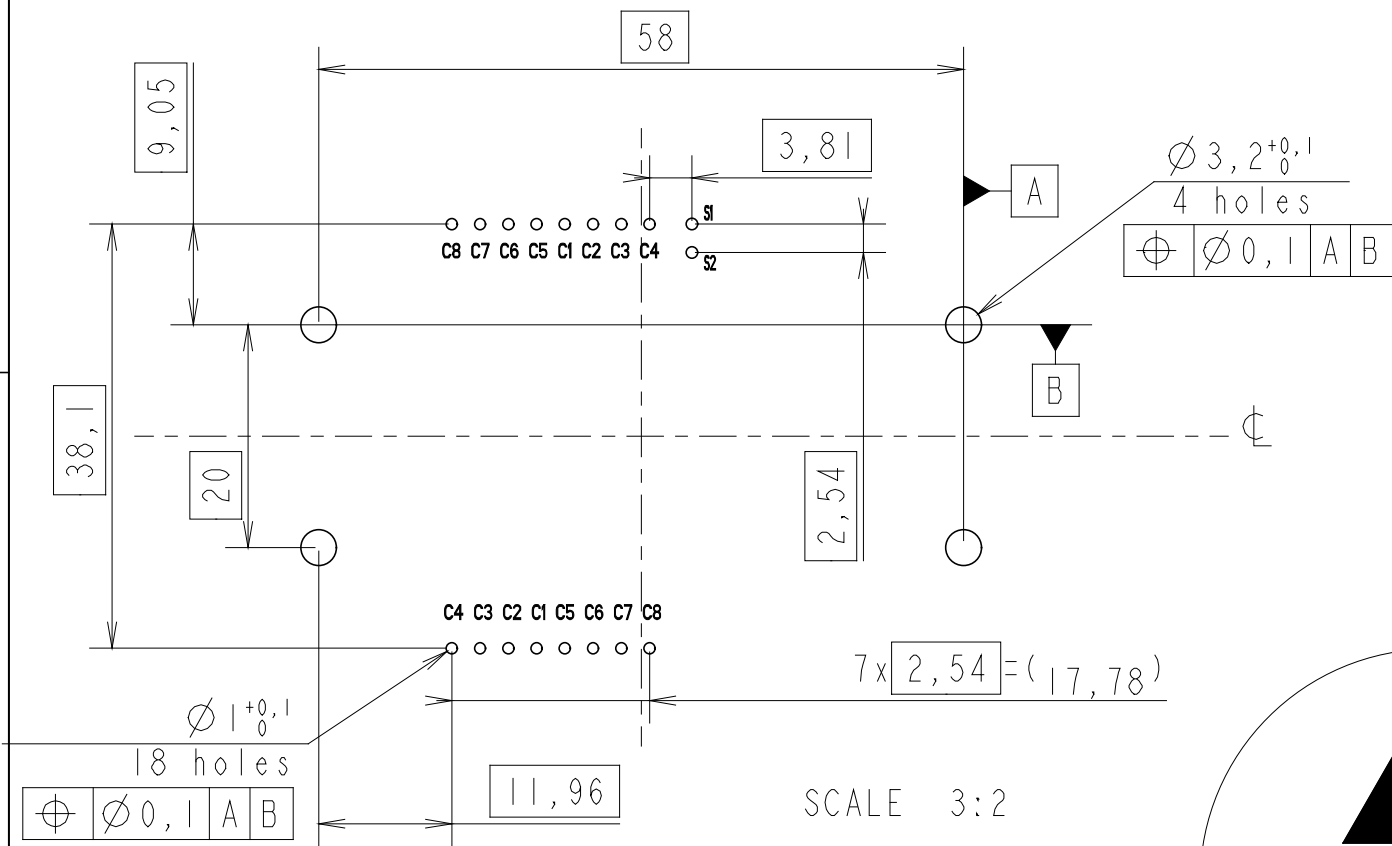
Tous droits réservés. Reproduction ou communication de ces données sans autorisation écrite de FCI. Propriété de FCI. Droits de reproduction FCI.

All rights reserved. Reproduction or communication in any form without written authority from the proprietors. Property of FCI. Copyright FCI.

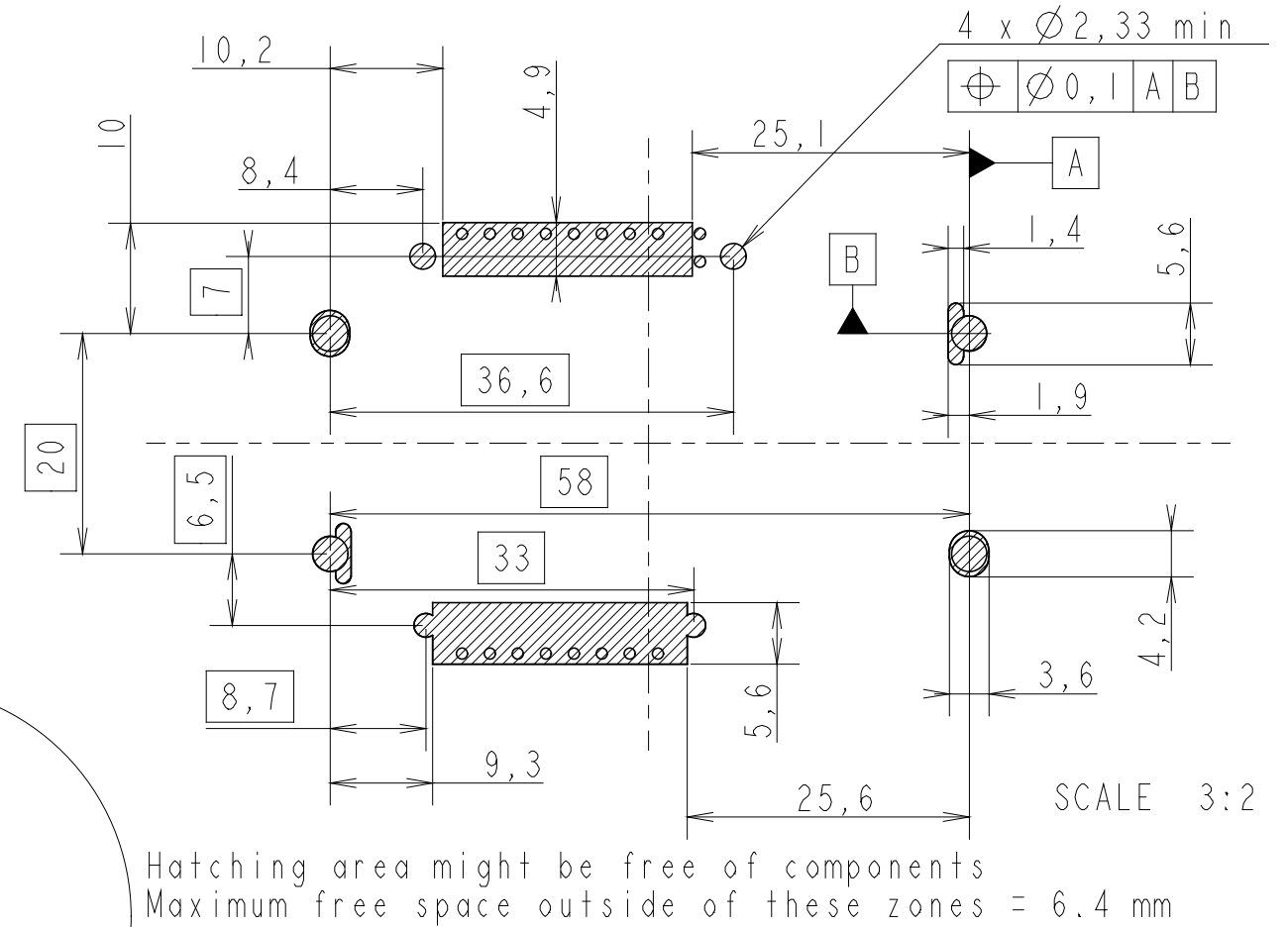


Tous droits strictement réservés. Reproduction ou communication à des tiers interdite sous quelque forme que ce soit sans autorisation écrite du propriétaire. Propriété de c FCI. Droits de reproduction FCI.

**RECOMMENDED PCB LAYOUT** CONTACT CONFIGURATION : ISO & AFNR (CONNECTOR SIDE)

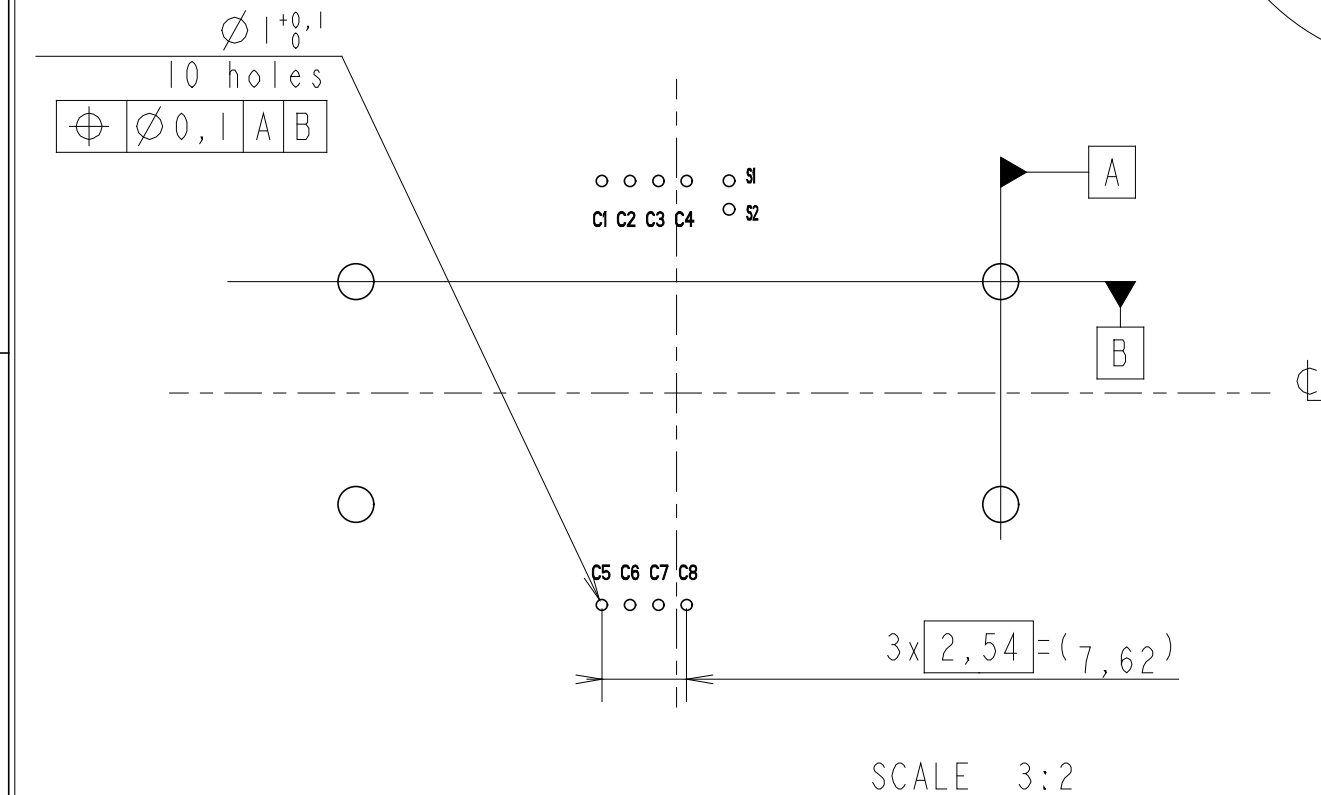


**STANDARD LAYOUT FOR 'KEEP OUT ZONE' (Connector Side)**



**FCI**

**RECOMMENDED PCB LAYOUT** CONTACT CONFIGURATION : ISO (CONNECTOR SIDE)



All rights strictly reserved. Reproduction or issue to third parties in any form without written permission is not permitted without written authority from the proprietor. Property of FCI. Copyright FCI.

CARD INSERTION

EUROPEAN PROJECTION

<b>FCI</b> www.fciconnect.com		surface - <input checked="" type="checkbox"/> ISO 1302	tolerance ISO 406 ISO 1101	projection  mm
Dr	DILIPTHOMAS	02.04.30	Product family	5S2F
Eng	F TISSERAND	02.04.30	Spec ref	SEE NOTES
Chr	N.TWINCY	'05/05/10	Material	SEE NOTES
Appr	KS	'05/05/10	ECN	105-0071
title L26 TYPE F13			dwg no VJW_54825	Rev. C
catalog no See Table		CUSTOMER COPY		sheet 2 of 2