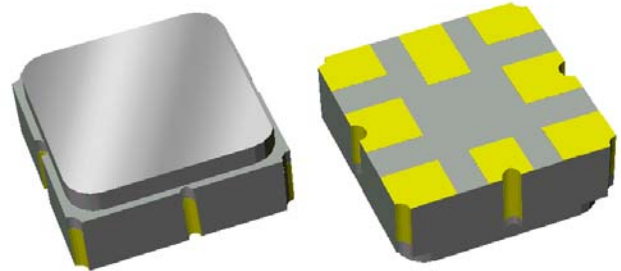


Preliminary Data Sheet

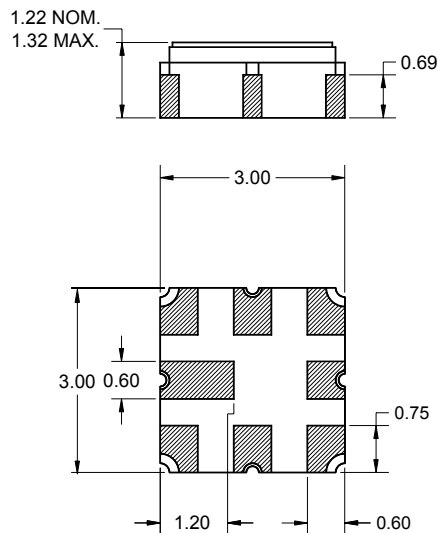
Features

- For broadband access applications
- Usable bandwidth 10 MHz
- Low loss
- High attenuation
- No impedance matching required for operation at 200 Ω
- Balanced operation
- Ceramic Surface Mount Package (SMP)
- Small size



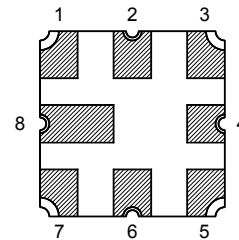
Package

Surface Mount 3.00 x 3.00 x 1.22 mm



Pin Configuration

Bottom View



Pin No.	Description
1	Input
2	Input return
5	Output return
6	Output
3,4,7,8	Case Ground

Dimensions shown are nominal in millimeters
 All tolerances are ± 0.15 mm except overall
 length and width ± 0.10 mm

Body: Al_2O_3 ceramic
 Lid: Kovar, Ni plated
 Terminations: Au plating 0.5 - 1.0 μ m,
 over a 2 - 6 μ m Ni plating

Preliminary Data Sheet

Electrical Specifications ⁽¹⁾

Operating Temperature Range: ⁽²⁾ -10 to +70 °C

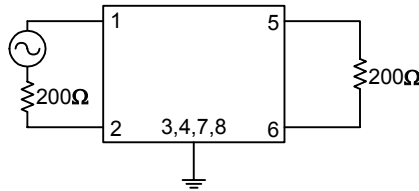
Parameter ⁽³⁾	Minimum	Typical	Maximum	Unit
Center Frequency	-	1220	-	MHz
Maximum Insertion Loss 1215 - 1225 MHz	-	4.5	5.5	dB
Lower 1.5 dB Bandedge ⁽⁴⁾ Upper 1.5 dB Bandedge	- 1225	1209.5 1230.5	1215 -	MHz MHz
Stopband Rejection ⁽⁴⁾ 500 - 1152 MHz	55	60	-	dB
1152 - 1190 MHz	30	55	-	dB
1250 - 1288 MHz	30	55	-	dB
1288 - 2000 MHz	55	50	-	dB
Amplitude Ripple ⁽⁵⁾ 1215 - 1225 MHz	-	0.5	1.5	dB
Group Delay Ripple ⁽⁵⁾ 1215 - 1225 MHz	-	30	-	ns
Source Impedance ⁽⁶⁾	-	200	-	Ω
Load Impedance ⁽⁶⁾	-	200	-	Ω

Notes:

1. All specifications are based on the test circuit shown below
2. In production, devices will be tested at room temperature to a guardbanded specification to ensure electrical compliance over temperature
3. Electrical margin has been built into the design to account for the variations due to temperature drift and manufacturing tolerances
4. All attenuation measurements will be referenced the insertion loss at center frequency
5. Maximum peak to adjacent valley measured over the defined range
6. This is the optimum impedance in order to achieve the performance shown

Test Circuit:

200 Ω
Balanced

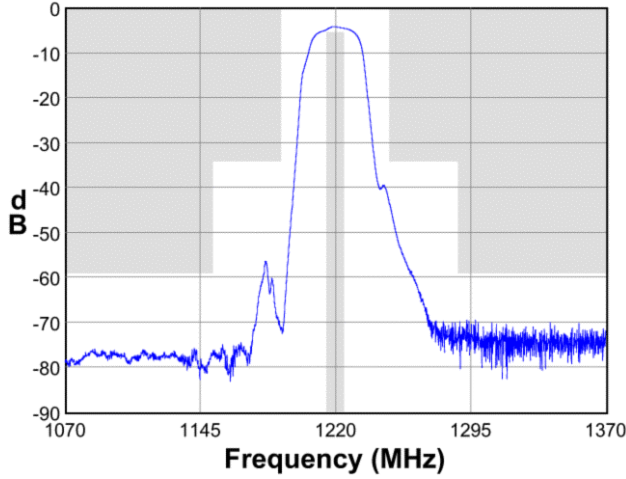


No impedance matching
required

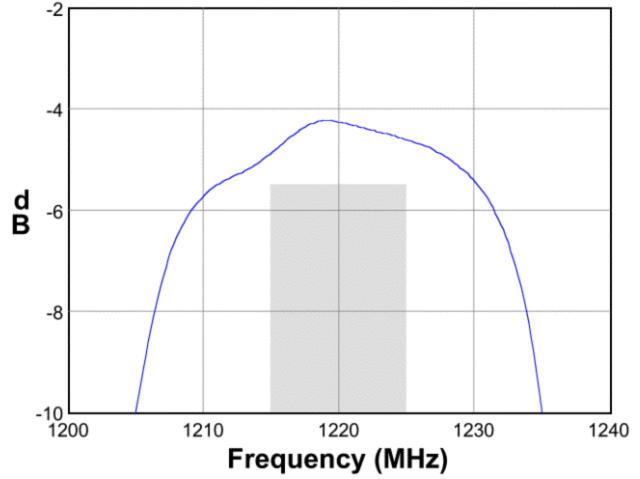
Preliminary Data Sheet

Typical Performance (at +25°C)

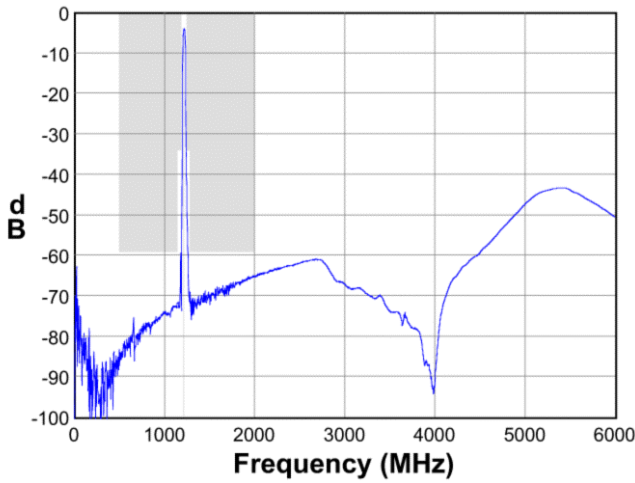
Frequency Response



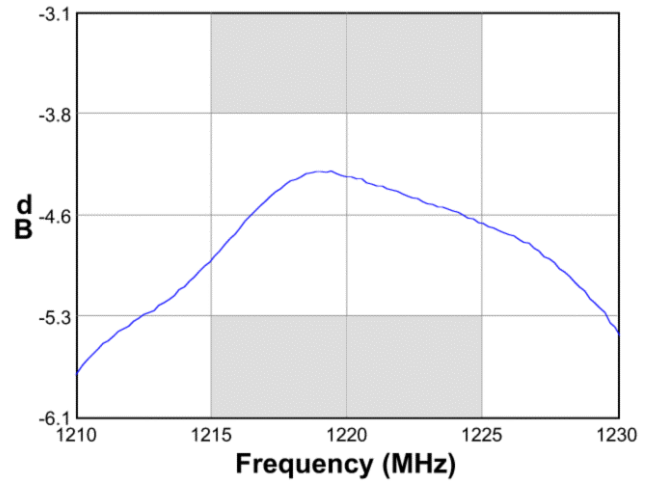
Passband Response



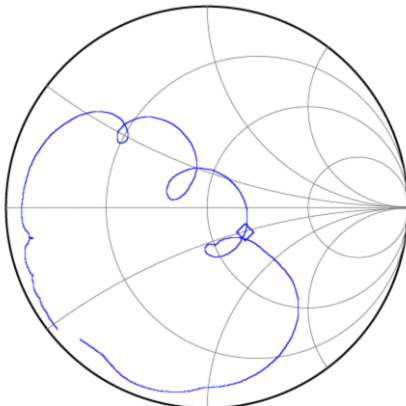
Wideband Response



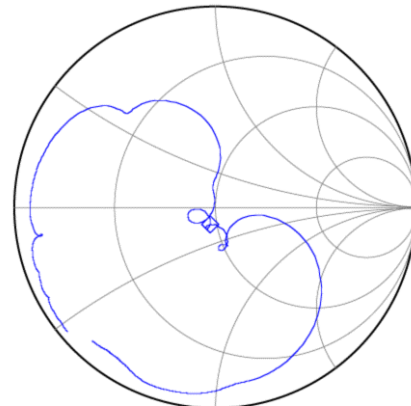
Amplitude Ripple



Input Smith Chart



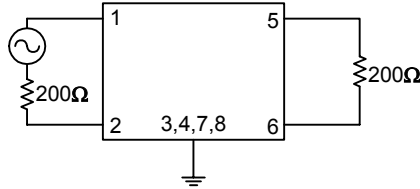
Output Smith Chart



Preliminary Data Sheet

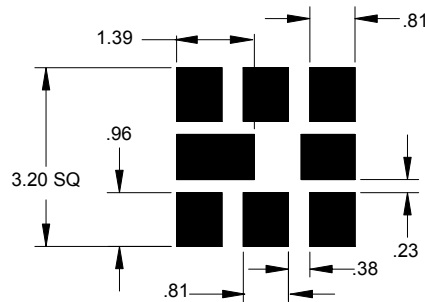
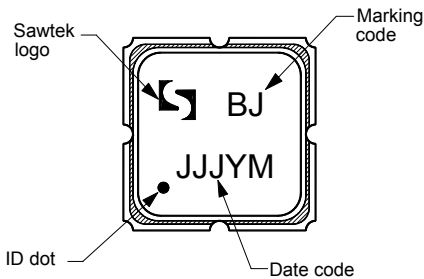
Matching Schematics

200 Ω
Balanced



No impedance matching
required

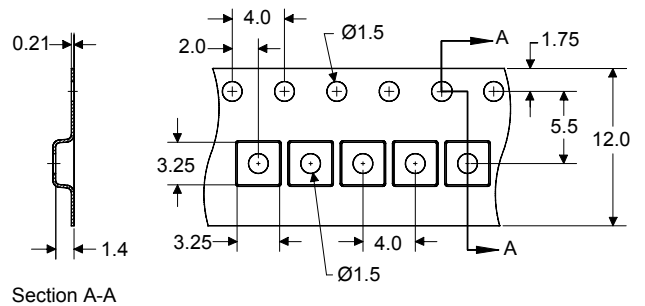
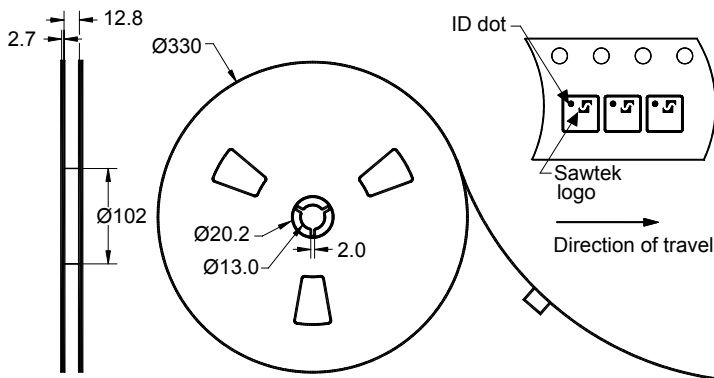
Marking PCB Footprint



The date code consists of: JJJ = Julian day,
Y = last digit of year, M = manufacturing site code

This footprint represents a recommendation only
Dimensions shown are nominal in millimeters

Tape and Reel




Dimensions shown are nominal in millimeters
Packaging quantity: 5000 units/reel

Preliminary Data Sheet

Maximum Ratings

Parameter	Symbol	Minimum	Maximum	Unit
Operating Temperature Range	T	-10	+70	°C
Storage Temperature Range	T _{stg}	-40	+85	°C

Warnings

- Electrostatic Sensitive Device (ESD) 
- Avoid ultrasonic exposure

Links to Additional Technical Information

[PCB Layout Tips](#)

[Qualification Flowchart](#)

[Soldering Profile](#)

[S-Parameters](#)

[Other Technical Information](#)

Sawtek's liability is limited only to the Surface Acoustic Wave (SAW) component(s) described in this data sheet. Sawtek does not accept any liability for applications, processes, circuits or assemblies which are implemented using any Sawtek component described in this data sheet.

Contact Information



PO Box 609501
Orlando, FL 32860-9501
USA

Phone: +1 (407) 886-8860
Fax: +1 (407) 886-7061
Email: custservice@sawtek.com
Web: www.sawtek.com

Or contact one of our worldwide network of [sales offices](#), [representatives or distributors](#)