

Surface Mount Frequency Mixer

ADE-18W+ ADE-18W

Level 7 (LO Power +7 dBm) 1750 to 3500 MHz



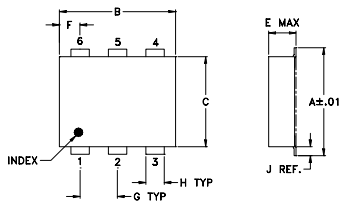
Maximum Ratings

Operating Temperature	-40°C to 85°C
Storage Temperature	-55°C to 100°C
RF Power	50mW
IF Current	40mA

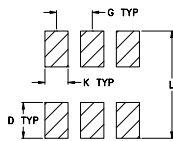
Pin Connections

LO	4
RF	6
IF	3
GROUND	1,2,5

Outline Drawing



PCB Land Pattern

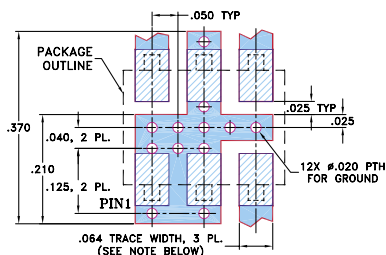


Suggested Layout,
Tolerance to be within ±.002

Outline Dimensions (inch/mm)

A	B	C	D	E	F	G
.272	.310	.220	.100	.112	.055	.100
6.91	7.87	5.59	2.54	2.84	1.40	2.54
H	J	K	L	wt		
.030	.026	.065	.300	grams		
0.76	0.66	1.65	7.62	0.20		

Demo Board MCL P/N: TB-02 Suggested PCB Layout (PL-051)



- NOTES: 1. TRACE WIDTH IS SHOWN FOR ROGERS RO4350B WITH DIELECTRIC THICKNESS .030" ± .002"; COPPER: 1/2 OZ. EACH SIDE. FOR OTHER MATERIALS TRACE WIDTH MAY NEED TO BE MODIFIED.
2. BOTTOM SIDE OF THE PCB IS CONTINUOUS GROUND PLANE.
- DENOTES PCB COPPER LAYOUT WITH SMOBC (SOLDER MASK OVER BARE COPPER)
 - DENOTES COPPER LAND PATTERN FREE OF SOLDER MASK

Features

- low conversion loss, 5.4 dB typ.
- good isolation, 33 dB typ.
- low profile package
- aqueous washable
- protected by U.S. Patent 6,133,525

Applications

- PCS
- MMDS
- ISM

CASE STYLE: CD542

PRICE: \$3.95 ea. QTY (10-49)

+ RoHS compliant in accordance with EU Directive (2002/95/EC)

The +Suffix identifies RoHS Compliance. See our web site for RoHS Compliance methodologies and qualifications.

Electrical Specifications

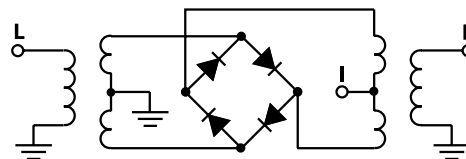
FREQUENCY (MHz)		CONVERSION LOSS (dB)			LO-RF ISOLATION (dB)		LO-IF ISOLATION (dB)		IP3 at center band (dBm)
LO/RF	IF	\bar{X}	σ	Total Range Max.	Typ.	Min.	Typ.	Min.	Typ.
1750-3500	DC-700	5.4	0.30	8.9	33	20	12	7	11

1 dB COMP.: +1 dBm typ.

Typical Performance Data

Frequency (MHz)		Conversion Loss (dB)	Isolation L-R (dB)	Isolation L-I (dB)	VSWR RF Port (:1)	VSWR LO Port (:1)
RF	LO	LO +7dBm	LO +7dBm	LO +7dBm	LO +7dBm	LO +7dBm
1750.00	1780.00	5.42	31.90	20.60	2.84	3.01
1784.78	1814.78	5.43	32.30	20.10	2.58	2.88
1932.61	1962.61	4.79	33.10	16.00	1.77	2.92
2080.44	2110.44	4.68	33.50	14.30	1.75	3.01
2228.26	2258.26	4.92	33.80	13.80	2.16	3.06
2376.09	2406.09	5.19	34.60	14.20	2.46	2.96
2523.91	2553.91	5.23	32.90	14.10	2.49	2.76
2671.74	2701.74	4.79	30.80	13.70	2.52	2.55
2819.57	2849.57	4.97	28.40	15.20	2.49	2.96
2967.39	2997.39	5.53	27.50	16.20	2.40	3.50
3000.00	3030.00	5.69	27.70	16.30	2.40	3.06
3115.21	3145.22	6.58	27.50	17.30	2.84	3.06
3263.04	3293.04	7.28	25.70	17.20	4.03	3.32
3410.87	3440.87	7.07	24.90	17.20	5.49	3.79
3470.00	3500.00	7.01	25.10	17.30	6.26	3.95
3500.00	3530.00	6.96	25.00	16.80	6.26	4.42
3558.70	3588.70	6.93	25.00	16.60	5.85	4.42
3706.52	3736.52	7.74	26.40	15.70	7.00	5.33

Electrical Schematic



Mini-Circuits®
ISO 9001 ISO 14001 CERTIFIED

ALL NEW
minicircuits.com

P.O. Box 350166, Brooklyn, New York 11235-0003 (718) 934-4500 Fax (718) 332-4661 For detailed performance specs & shopping online see Mini-Circuits web site



The Design Engineers Search Engine Provides ACTUAL Data Instantly From MINI-CIRCUITS At: www.minicircuits.com

RF/IF MICROWAVE COMPONENTS

REV. E
M102713
ADE-18W
ED-5808/2
DJ/TD/CP/AM
070412
Page 1 of 2

