



SAW Components

Data Sheet B7775





SAW Components

B7775

Low-Loss Filter

1575,42 MHz

Data Sheet

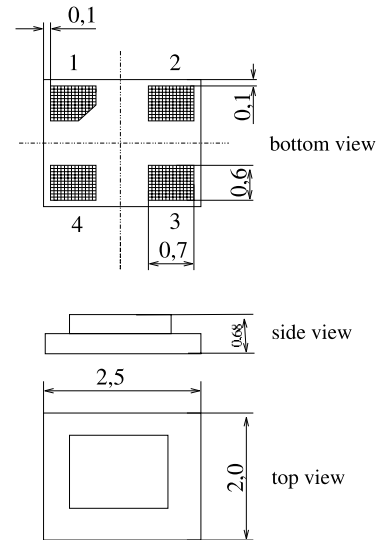
Features

- Low loss RF filter for GPS receivers
- Low amplitude ripple
- Low insertion attenuation
- Usable passband 2 MHz
- No matching network required for operation at 50 Ω
- Unbalanced to unbalanced operation
- Package for **Surface Mounted Technology (SMT)**

Terminals

- Ni, gold-plated

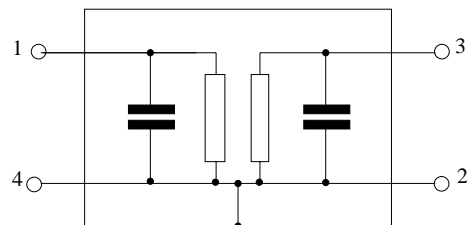
Chip Sized SAW Package DCS4E



Dimensions in mm, approx. weight 0,012g

Pin configuration

- 1 Input
- 3 Output
- 2,4 Ground



Type	Ordering code	Marking and Package according to	Packing according to
B7775	B39162-B7775-E510	C61157-A7-A121	F61074-V8153-Z000

Electrostatic Sensitive Device (ESD)

Maximum ratings

Operable temperature range	T	- 40/+ 85	°C	source and load impedance 50 Ω continuous wave signal
Storage temperature range	T_{stg}	- 40/+ 85	°C	
DC voltage	V_{DC}	3	V	
Input power max. 1573,42 ... 1577,42 MHz	P_{IN}	3	dBm	
50,0...1460 and 1710 ... 4000 MHz	P_{IN}	13	dBm	



SAW Components

B7775

Low-Loss Filter

1575,42 MHz

Data Sheet

Characteristics

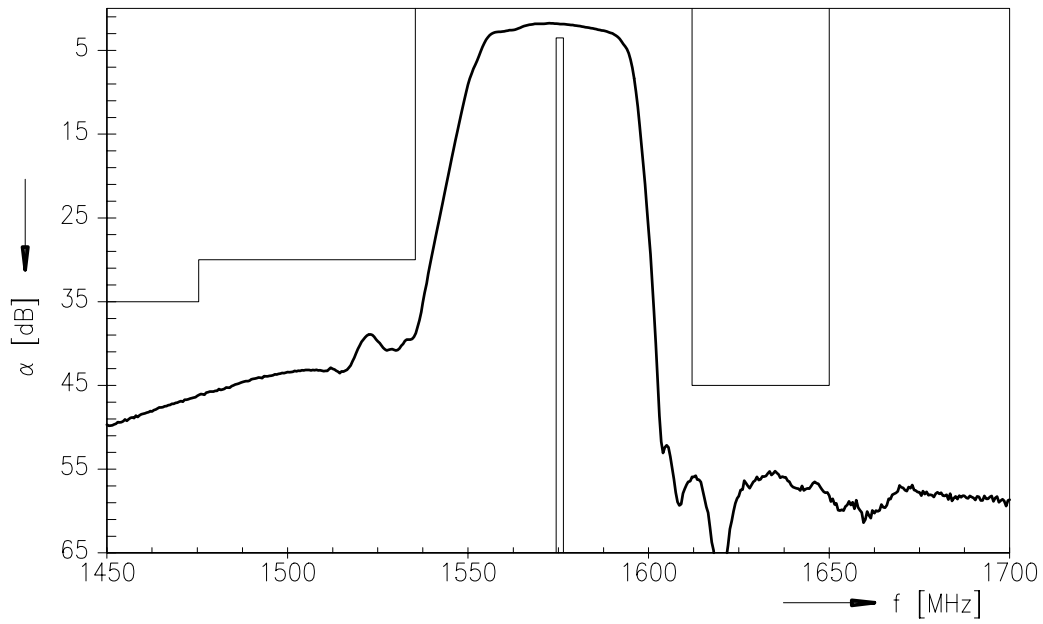
Operating temperature range: $T_A = -40 \dots +85 \text{ }^\circ\text{C}$
 Terminating source impedance: $Z_S = 50 \text{ } \Omega$
 Terminating load impedance: $Z_L = 50 \text{ } \Omega$

		min.	typ.	max.	
Nominal frequency	f_N	—	1575,42	—	MHz
Maximum insertion attenuation	α_{\max}	—	2,0	3,0	dB
1574,42 ... 1576,42 MHz					
Amplitude ripple in passband (p-p)	$\Delta\alpha$	—	0,1	1,0	dB
1574,42 ... 1576,42 MHz					
Return loss (Input and Output)		12	17	—	dB
1574,42 ... 1576,42 MHz					
Attenuation	α	40	47	—	dB
806,00 ... 902,00 MHz		35	45	—	
902,00 ... 1475,42 MHz		30	37	—	
1475,42 ... 1535,42 MHz		45	53	—	
1612,00 ... 1650,00 MHz		45	53	—	
1792,00 ... 1804,00 MHz					
Temperature coefficient of frequency	TC_f	—	-36	—	ppm/K

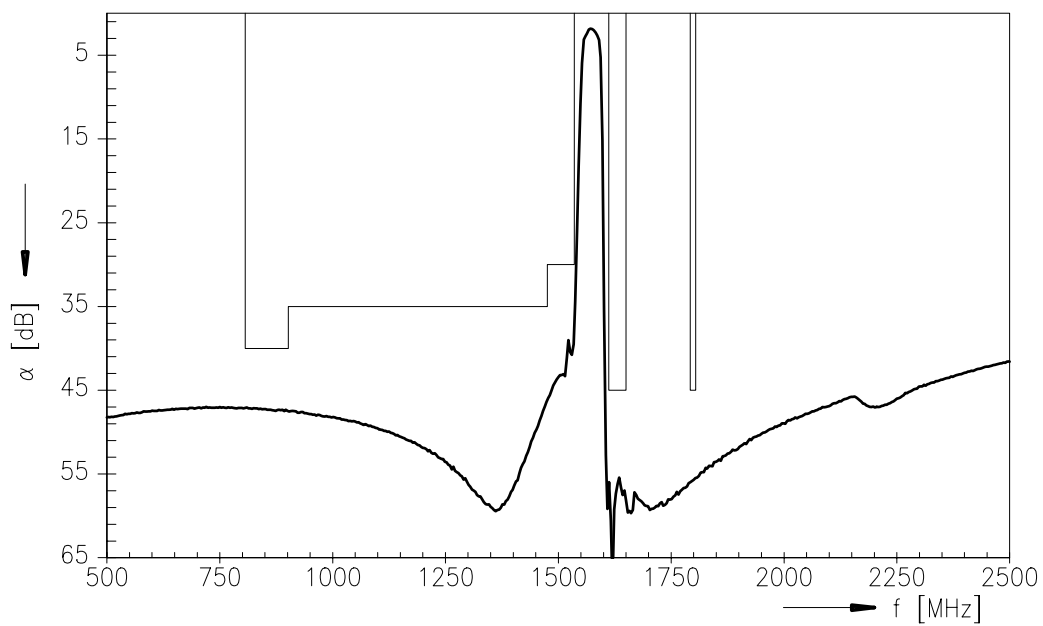


Data Sheet

Transfer function (pass band):



Transfer function:





SAW Components

B7775

Low-Loss Filter

1575,42 MHz

Data Sheet

Published by EPCOS AG

SAW MC WT, P.O. Box 80 17 09, 81617 Munich, GERMANY

TEL ++49 89 636 09, FAX ++49 89 636 2 26 89

© EPCOS AG 2004. Reproduction, publication and dissemination of this brochure and the information contained therein without EPCOS' prior express consent is prohibited.

Purchase orders are subject to the General Conditions for the Supply of Products and Services of the Electrical and Electronics Industry recommended by the ZVEI (German Electrical and Electronic Manufacturers' Association), unless otherwise agreed.

This brochure replaces the previous edition.

For questions on technology, prices and delivery please contact the Sales Offices of EPCOS AG or the international Representatives.

Due to technical requirements components may contain dangerous substances. For information on the type in question please also contact one of our Sales Offices.