



SAW Components

Data Sheet B7851





SAW Components

B7851

Low-Loss Filter for Mobile Communication

1960,0 MHz

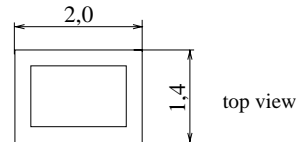
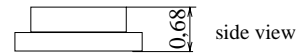
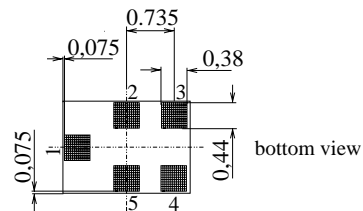
Data Sheet



Chip sized SAW package QCS5E

Features

- Low-loss RF filter for mobile telephone PCS systems, receive path
- Low amplitude ripple
- Very low insertion loss
- Usable passband 60 MHz
- Unbalanced to balanced operation
- Impedance transform from 50 Ω to 150 Ω
- Suitable for GPRS class 1 to 12
- Package for **Surface Mount Technology (SMT)**
- Pb-free



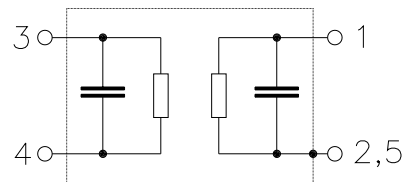
Dimensions in mm, approx. weight 0,007 g

Terminals

- Ni, gold-plated

Pin configuration

- 1 Input, unbalanced
- 3,4 Output, balanced
- 2,5 Case ground



Type	Ordering code	Marking and Package according to	Packing according to
B7851	B39202-B7851-K410	C61157-A7-A131	F61074-V8151-Z000

Electrostatic Sensitive Device (ESD)

Maximum ratings

Operable temperature range	T	- 40 / + 85	°C	machine model, 10 pulses
Storage temperature range	T_{stg}	- 40 / + 85	°C	
ESD voltage	V_{MM}	50	V	
DC voltage	V_{DC}	5	V	
Input Power at				peak power of GSM signal, duty cycle 4:8
GSM850, GSM900	P_{IN}	15	dBm	
GSM1800, GSM1900	P_{IN}	12	dBm	
Tx bands				

* - acc. to JESD22-A115A (Machine Model), 10 negative & 10 positive pulses



SAW Components	B7851
Low-Loss Filter for Mobile Communication	1960,0 MHz
Data Sheet	SMD

Characteristics

Operating Temperature Range: $T = 25^{\circ}\text{C}$
 Terminating source impedance: $Z_S = 50\Omega$
 Terminating load impedance: $Z_L = 150\Omega \parallel 16\text{nH}$ (balanced)

		min.	typ.	max.	
Center frequency	f_C	—	1960,0	—	MHz
Maximum insertion attenuation	α_{max}	—	1,4	2,1	dB
1930,0 ... 1990,0 MHz					
Amplitude ripple (p-p)	$\Delta\alpha$	—	0,5	1,0	dB
1930,0 ... 1990,0 MHz					
Input VSWR		—	1,7	2,0	
1930,0 ... 1990,0 MHz					
Output VSWR		—	1,6	2,0	
1930,0 ... 1990,0 MHz					
Output phase balance ($\phi(S_{31}) - \phi(S_{21}) + 180^{\circ}$)		-10	-2/3	10	degree
1930,0 ... 1990,0 MHz					
Output amplitude balance (S_{31}/S_{21})		-1,0	-0,5/0,5	1,0	dB
1930,0 ... 1990,0 MHz					
Attenuation	α				
0,0 ... 1510,0 MHz		40	43	—	dB
1510,0 ... 1830,0 MHz		30	35	—	dB
1830,0 ... 1850,0 MHz		26	30	—	dB
1850,0 ... 1890,0 MHz		23	28	—	dB
1890,0 ... 1910,0 MHz		13	18	—	dB
2010,0 ... 2070,0 MHz		13	15	—	dB
2070,0 ... 2400,0 MHz		23	26	—	dB
2400,0 ... 2500,0 MHz		35	48	—	dB
2500,0 ... 3860,0 MHz		28	35	—	dB
3860,0 ... 3980,0 MHz		45	54	—	dB
3980,0 ... 5790,0 MHz		28	48	—	dB
5790,0 ... 6000,0 MHz		40	58	—	dB



SAW Components

B7851

Low-Loss Filter for Mobile Communication

1960,0 MHz

Data Sheet



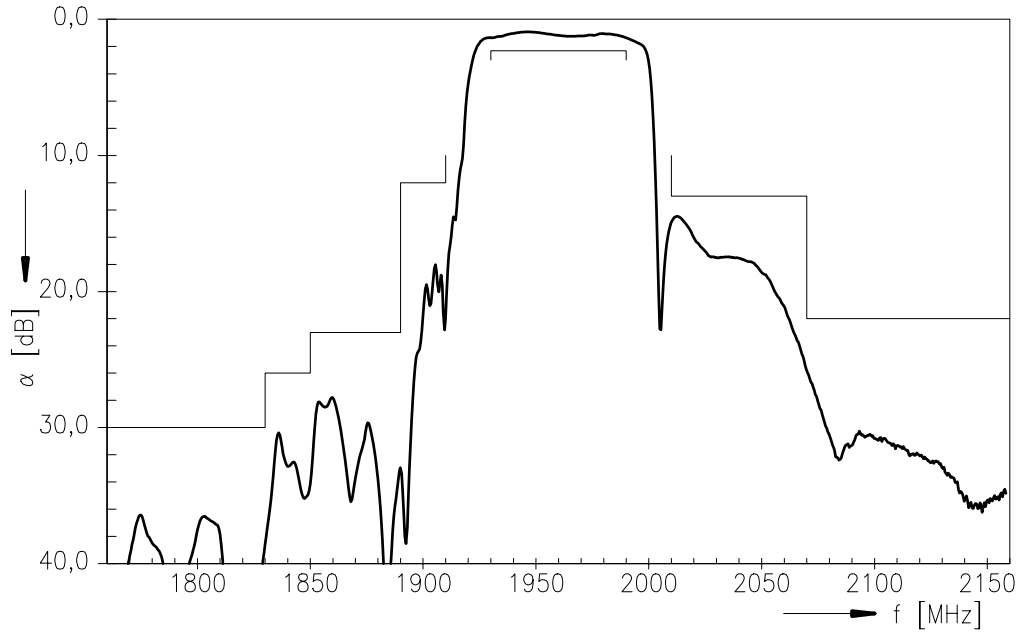
Characteristics

Operating Temperature Range: $T = -20$ to $+75^\circ\text{C}$
 Terminating source impedance: $Z_S = 50\Omega$
 Terminating load impedance: $Z_L = 150\Omega \parallel 16\text{nH}$ (balanced)

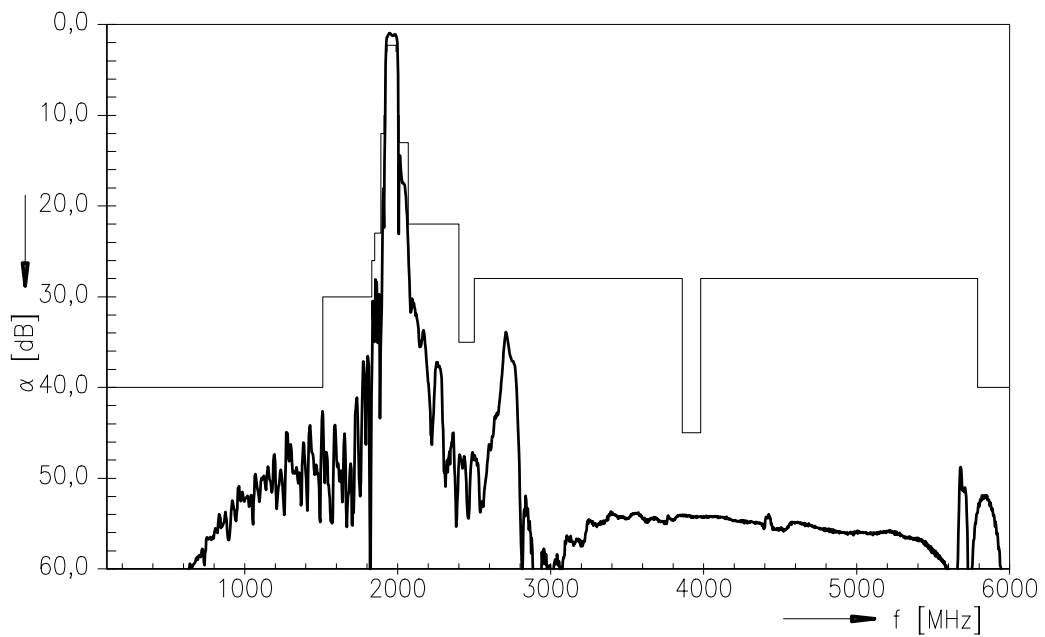
			min.	typ.	max.	
Center frequency	f_C		—	1960,0	—	MHz
Maximum insertion attenuation	α_{max}	1930,0 ... 1990,0 MHz	—	1,6	2,3	dB
Amplitude ripple (p-p)	$\Delta\alpha$	1930,0 ... 1990,0 MHz	—	0,6	1,3	dB
Input VSWR		1930,0 ... 1990,0 MHz	—	1,7	2,0	
Output VSWR		1930,0 ... 1990,0 MHz	—	1,6	2,0	
Output phase balance ($\phi(S_{31}) - \phi(S_{21}) + 180^\circ$)		1930,0 ... 1990,0 MHz	-10	-3/5	10	degree
Output amplitude balance (S_{31}/S_{21})		1930,0 ... 1990,0 MHz	-1,0	-0,6/0,5	1,0	dB
Attenuation	α	0,0 ... 1510,0 MHz	40	43	—	dB
		1510,0 ... 1830,0 MHz	30	35	—	dB
		1830,0 ... 1850,0 MHz	26	30	—	dB
		1850,0 ... 1890,0 MHz	23	28	—	dB
		1890,0 ... 1910,0 MHz	12	18	—	dB
		2010,0 ... 2070,0 MHz	13	15	—	dB
		2070,0 ... 2400,0 MHz	22	25	—	dB
		2400,0 ... 2500,0 MHz	35	48	—	dB
		2500,0 ... 3860,0 MHz	28	35	—	dB
		3860,0 ... 3980,0 MHz	45	54	—	dB
		3980,0 ... 5790,0 MHz	28	48	—	dB
		5790,0 ... 6000,0 MHz	40	58	—	dB



Transfer function



Transfer function (wide band)





SAW Components

B7851

Low-Loss Filter for Mobile Communication

1960,0 MHz

Data Sheet



Published by EPCOS AG

Surface Acoustic Wave Components Division, SAW MC WT

P.O. Box 80 17 09, 81617 Munich, GERMANY

© EPCOS AG 2004. Reproduction, publication and dissemination of this brochure and the information contained therein without EPCOS' prior express consent is prohibited.

Purchase orders are subject to the General Conditions for the Supply of Products and Services of the Electrical and Electronics Industry recommended by the ZVEI (German Electrical and Electronic Manufacturers' Association), unless otherwise agreed.

This brochure replaces the previous edition.

For questions on technology, prices and delivery please contact the Sales Offices of EPCOS AG or the international Representatives.

Due to technical requirements components may contain dangerous substances. For information on the type in question please also contact one of our Sales Offices.