



SAW Components

Data Sheet B4152

Data Sheet

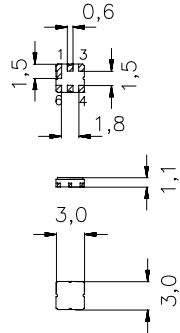


Ceramic package **DCC6D**
Features

- Low-loss RF filter for mobile telephone PCN systems, receive path
- Low amplitude ripple
- Usable passband 75 MHz
- Unbalanced to balanced operation
- Package for **Surface Mounted Technology (SMT)**
- Ceramic SMD package

Terminals

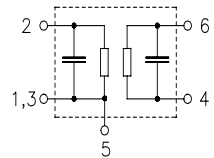
- Ni, gold-plated



Dimensions in mm, approx. weight 0,037 g

Pin configuration

2	Input, unbalanced
4, 6	Output, balanced
1, 3	Input ground
1, 3, 5	To be grounded



Type	Ordering code	Marking and Package according to	Packing according to
B4152	B39182-B4152-U510	C61157-A7-A68	F61074-V8089-Z000

Electrostatic Sensitive Device (ESD)
Maximum ratings

Operable temperature range	T	- 10 / + 75	°C	
Storage temperature range	T_{stg}	- 40 / + 85	°C	
DC voltage	V_{DC}	5	V	
Input power max.	P_{IN}			source/load impedance 50Ω/50Ω
1710,0 ... 1785,0 MHz		13	dBm	peak power of GSM signal duty cycle 2:8


Characteristics

Operating Temperature Range:	$T = +25 \pm 2^\circ \text{C}$
Terminating source impedance:	$Z_S = 50 \Omega$ (unbalanced)
Terminating load impedance:	$Z_L = 50 \Omega$ (balanced)

		min.	typ.	max.	
Center frequency	f_C	—	1842,5	—	MHz
Maximum insertion attenuation	α_{\max}				
1805,0 ... 1880,0	MHz	—	3,0	3,8	dB
Amplitude ripple (p-p)	$\Delta\alpha$				
1805,0 ... 1880,0	MHz	—	1,3	2,0	dB
Input VSWR					
1805,0 ... 1880,0	MHz	—	2,8	3,0	dB
Output VSWR					
1805,0 ... 1880,0	MHz	—	2,0	2,7	dB
Attenuation	α				
0 ... 1200,0	MHz	37	41	—	dB
1200,0 ... 1650,0	MHz	25	35	—	dB
1650,0 ... 1705,0	MHz	23	32	—	dB
1705,0 ... 1785,0	MHz	13	15	—	dB
1920,0 ... 1980,0	MHz	10	13	—	dB
1980,0 ... 2000,0	MHz	22	27	—	dB
2050,0 ... 6000,0	MHz	23	30	—	dB

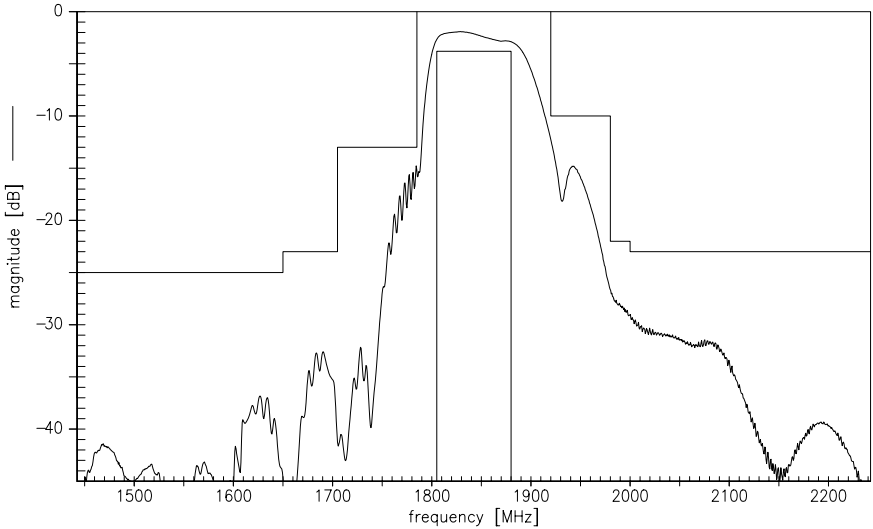
Data Sheet


Characteristics

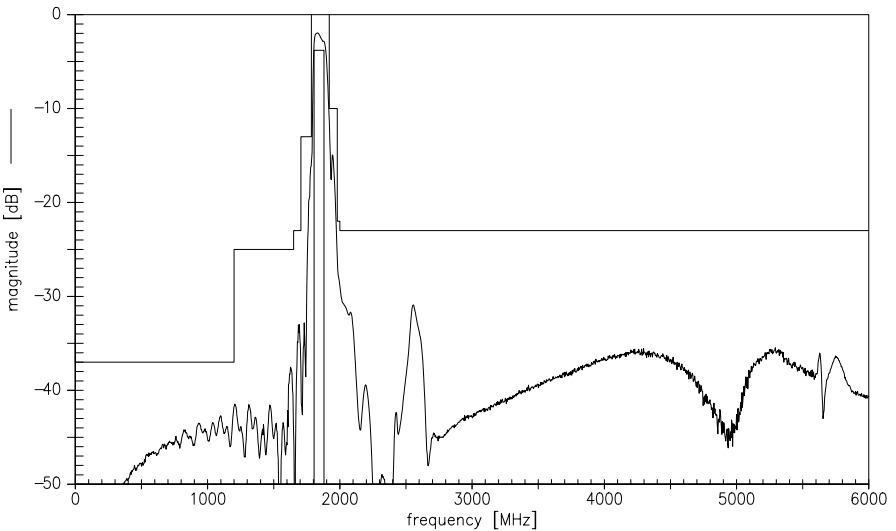
Operating Temperature Range: $T = -10$ to $+75^{\circ}\text{C}$
 Terminating source impedance: $Z_S = 50\ \Omega$ (unbalanced)
 Terminating load impedance: $Z_L = 50\ \Omega$ (balanced)

		min.	typ.	max.	
Center frequency	f_C	—	1842,5	—	MHz
Maximum insertion attenuation	α_{\max}	—	3,2	4,3	dB
	1805,0 ... 1880,0 MHz				
Amplitude ripple (p-p)	$\Delta\alpha$	—	1,5	2,5	dB
	1805,0 ... 1880,0 MHz				
Input VSWR		—	2,8	3,3	dB
	1805,0 ... 1880,0 MHz				
Output VSWR		—	2,1	3,0	dB
	1805,0 ... 1880,0 MHz				
Attenuation	α				
	0 ... 1200,0 MHz	37	41	—	dB
	1200,0 ... 1650,0 MHz	25	35	—	dB
	1650,0 ... 1705,0 MHz	23	32	—	dB
	1705,0 ... 1785,0 MHz	10	15	—	dB
	1920,0 ... 1980,0 MHz	9	13	—	dB
	1980,0 ... 2000,0 MHz	22	26	—	dB
	2050,0 ... 6000,0 MHz	23	30	—	dB

Transfer function



Transfer function (wide band)



Published by EPCOS AG

Surface Acoustic Wave Components Division, OFW E MF

P.O. Box 80 17 09, D-81617 München

© EPCOS AG 1999. All Rights Reserved.

As far as patents or other rights of third parties are concerned, liability is only assumed for components per se, not for applications, processes and circuits implemented within components or assemblies.

The information describes the type of component and shall not be considered as assured characteristics.

Terms of delivery and rights to change design reserved.

For questions on technology, prices and delivery please contact the sales offices of EPCOS AG or the international representatives.

Due to technical requirements components may contain dangerous substances. For information on the type in question please also contact one of our sales offices.