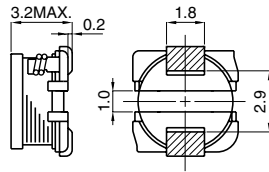
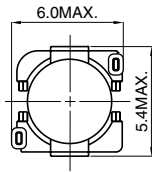
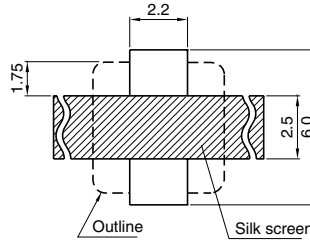


UNSHIELDED TYPE

CDH53

Outline

SMT type power inductors whereby the electrode is attached to the ferrite core directly.

Dimensions (mm)

LAND PATTERNS(mm)

CONSTRUCTION


(2.2μH – 220μH)

In order to prevent short-circuiting, a silk screen is recommended.

◆ TYPE CDH53

Parts No.	Inductance	D.C.R. (Ω) (Max) Typical / Rated D. C. Current (A)	Parts No.	Inductance	D.C.R. (Ω) (Max) Typical / Rated D. C. Current (A)
2R2	2.2μH	66m (51m) / 2.03	390	39μH	0.55 (0.43) / 0.64
2R7	2.7μH		470	47μH	0.77 (0.59) / 0.53
3R3	3.3μH	88m (68m) / 1.88	560	56μH	0.87 (0.67) / 0.50
3R9	3.9μH		680	68μH	1.21 (0.96) / 0.45
4R7	4.7μH	96m (74m) / 1.68	820	82μH	1.34 (1.07) / 0.39
5R6	5.6μH		101	100μH	1.57 (1.25) / 0.37
6R8	6.8μH		121	120μH	1.80 (1.44) / 0.34
8R2	8.2μH		151	150μH	2.40 (1.92) / 0.31
100	10μH	0.16 (0.13) / 1.23	181	180μH	2.66 (2.13) / 0.30
120	12μH	0.18 (0.14) / 1.12	221	220μH	3.73 (2.99) / 0.26
150	15μH	0.25 (0.20) / 1.00	271	270μH	
180	18μH	0.28 (0.21) / 0.88	331	330μH	
220	22μH	0.39 (0.30) / 0.80	391	390μH	
270	27μH	0.42 (0.32) / 0.72	471	470μH	
330	33μH	0.49 (0.38) / 0.67			

Measuring Freq. (L)

CDH53 2.2μH – 4.7μH (7.96MHz), 10μH – 220μH (1kHz)

Tolerance of Inductance

CDH53 2.2μH – 4.7μH ± 20% (M), 10μH – 12μH ± 15% (L), 15μH – 56μH ± 10% (K), 68μH – 220μH ± 5% (J)

Rated D.C. Current

This indicates the value of current when the inductance is 10% lower than its initial value at D.C. superimposition or D.C. current when at t=40°C, whichever is lower. (Ta=20°C)

Sales Contact

North America
1701 Golf Road, Tower 3
Suite 400, Rolling
Meadows, IL 60008, USA
Tel: (1) 847 545-6700
Fax: (1) 847 545-6720

Japan
Nihonbashi- ingyocho
2-Chome, Chuo-ku,
Tokyo, Japan
Tel: (81) 03 3667-3301
Fax: (81) 03 3667-3456

Hong Kong
14/F, Eastern Centre,
1065 King's Road, Quarry
Road, Hong Kong
Tel: (852) 2880-6688
Fax: (852) 2880-9596

Taiwan
No. 171, Futech Street,
Hsin-I, Taipei, Taiwan,
ROC
Tel: (886) 2 2726-2177
Fax: (886) 2 2728-2726

Singapore
996 Bendemeer
Road #04-05 to 06
Singapore 339944
Tel: (65) 2963-388
Fax: (65) 2963-390

Europe
Chaussee de Tervuren113A,
1160 Brussels
Belgium
Email:
europe.sales@hk.sumida.com