

**E-Series RF 1:4 Transmission Line Step-up Transformer**  
6 – 1000 MHz

**ETC4-1T-7**  
**V4**

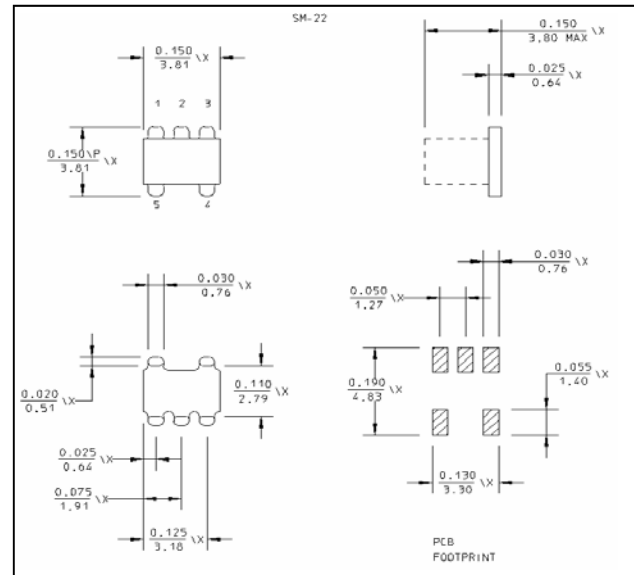
**Features**

- 1:4 Impedance Ratio
- CT on Secondary
- Surface Mount
- Tape and reel packaging available

**Description**

M/A-COM's ETC4-1T-7 is a 1:4 RF transmission line step-up transformer in a low cost, surface mount package. Ideally suited for high volume cellular and wireless applications. Typical applications include single to balanced mode conversion and impedance matching. Parts are packaged in tape & reel.

**SM - 22 Package**



**Electrical Specifications:  $T_A = 25^\circ\text{C}$ ,  $Z_0 = 50\Omega$ <sup>1</sup>**

Parameter	Test Conditions	Frequency	Units	Min	Typ	Max
RF Frequency	—	6 - 1000	MHz	—	—	—
Insertion Loss	$F_L-f_U$	6 - 600 600 - 1000	dB	—	—	2.0 3.0
Amplitude Unbalance	$F_L-f_U$	6 - 1000	dB	—	—	1.0
Phase Unbalance	$F_L-f_U$	6 - 1000	Degrees	—	—	10

**Absolute Maximum Ratings<sup>1</sup>**

Parameter	Absolute Maximum
RF Power	250 mW
DC Current	30 mA
Operating Temperature	-40°C to +85°C
Storage Temperature	-55°C to +125°C

1. Operation of this device above any one of these parameters may cause permanent damage.

**Ordering Information**

Part Number	Package
ETC4-1T-7TR	Tape and Reel (2000 piece Reel)

1

M/A-COM Inc. and its affiliates reserve the right to make changes to the product(s) or information contained herein without notice. M/A-COM makes no warranty, representation or guarantee regarding the suitability of its products for any particular purpose, nor does M/A-COM assume any liability whatsoever arising out of the use or application of any product(s) or information.

• **North America** Tel: 800.366.2266 / Fax: 978.366.2266  
 • **Europe** Tel: 44.1908.574.200 / Fax: 44.1908.574.300  
 • **Asia/Pacific** Tel: 81.44.844.8296 / Fax: 81.44.844.8298

Visit [www.macom.com](http://www.macom.com) for additional data sheets and product information.

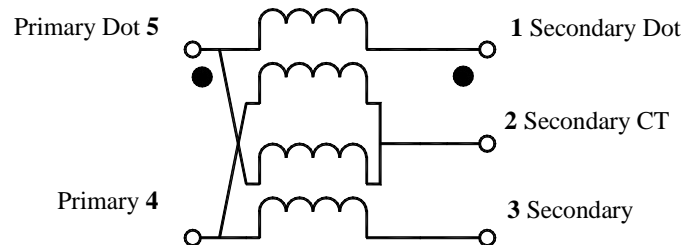
**E-Series RF 1:4 Transmission Line Step-up Transformer**  
6 – 1000 MHz

ETC4-1T-7  
V4

**Pin Configuration**

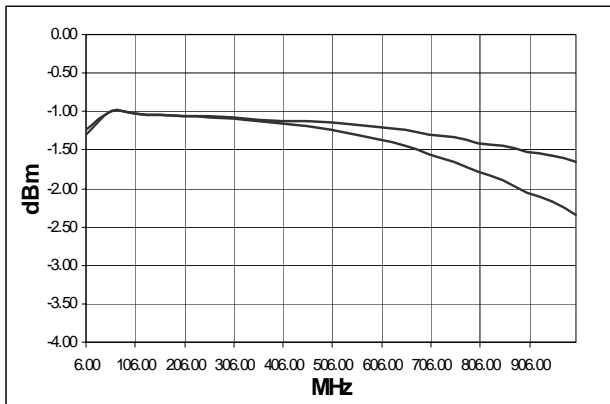
Pin No.	Function
1	Secondary Dot
2	Secondary CT
3	Secondary
4	Primary
5	Primary Dot

**Schematic**

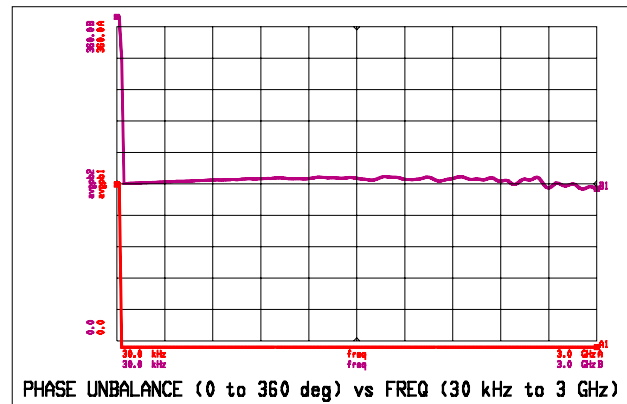


**Typical Performance Curves**

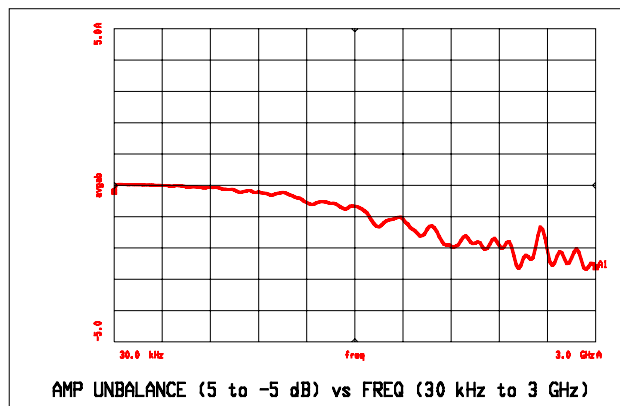
**Insertion Loss**



**Phase Unbalance**



**Amplitude Unbalance**



**Input Impedance**

