



WBFBP-06C Plastic-Encapsulate Diodes

FBAT54CDW

SURFACE MOUNT SCHOTTKY BARRIER DIODE ARRAYS

DESCRIPTION

Silicon epitaxial planar
PN Junction Guard Ring for Schottky Diode

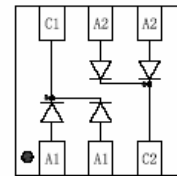
FEATURES

- Low Forward Voltage Drop
- Fast Switching SCHOTTKY DIODE

APPLICATION

Ultra high speed switching, rectifiers
For portable equipment:(i.e. Mobile phone,MP3, MD,CD-ROM,
DVD-ROM, Note book PC, etc.)

Maximum Ratings @T_A=25°C



FBAT54CDW
Marking:KL7

Parameter	Symbol	Limits	Unit
Peak Repetitive reverse voltage DC Blocking Voltage	V_{RM} V_R	30	V
Average Rectified Output Current	I_O	100	mA
Power Dissipation	P_D	150	mW
Junction temperature	T_J	125	°C
Storage temperature range	T_{STG}	-65-125	°C

ELECTRICAL CHARACTERISTICS (T_{amb}=25°C unless otherwise specified)

Parameter	Symbol	Test conditions	MIN	MAX	UNIT
Reverse breakdown voltage	$V_{(BR)}$	$I_R=100\mu A$	30		V
Reverse voltage leakage current	I_R	$V_R=25V$		2	uA
Forward voltage	V_F	$I_F=0.1mA$ $I_F=1mA$ $I_F=10mA$ $I_F=30mA$ $I_F=100mA$		240 320 400 500 1000	mV
Total capacitance	C_T	$V_R=1V, f=1MHz$		10	pF
Reverse recovery time	t_{rr}	$I_F=10mA, I_R=10mA\sim 1mA$ $R_L=100\Omega$		5	nS

Typical Characteristics

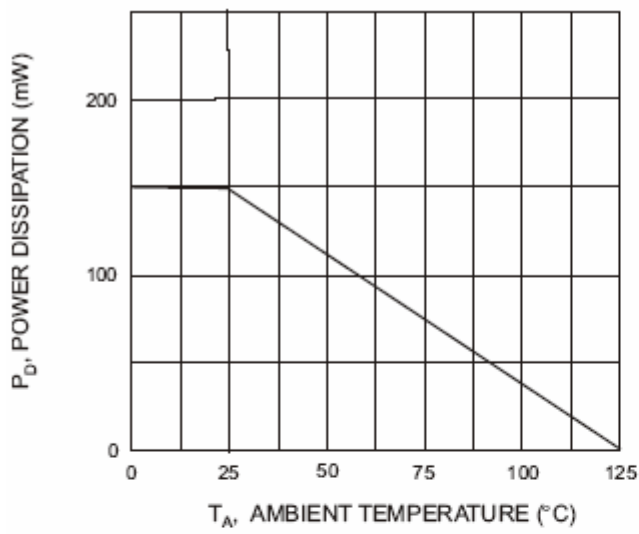


Fig. 1 Power Derating Curve

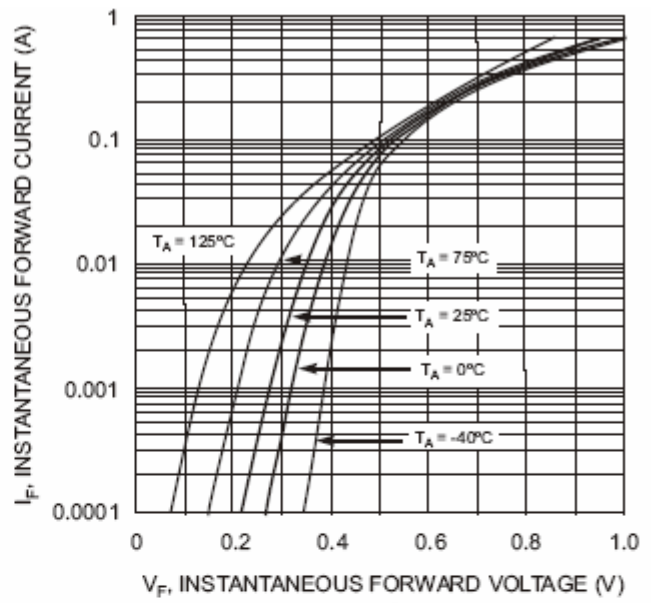


Fig. 2 Forward Characteristics

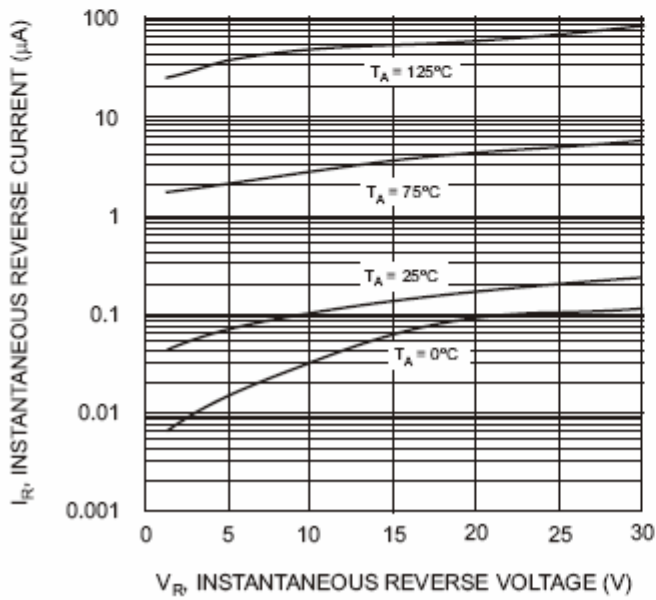


Fig. 3 Typical Reverse Characteristics

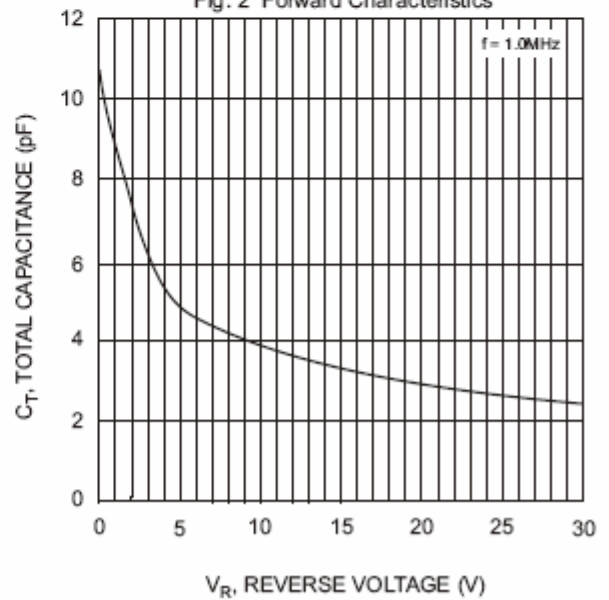
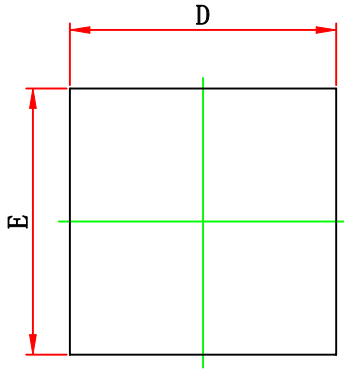


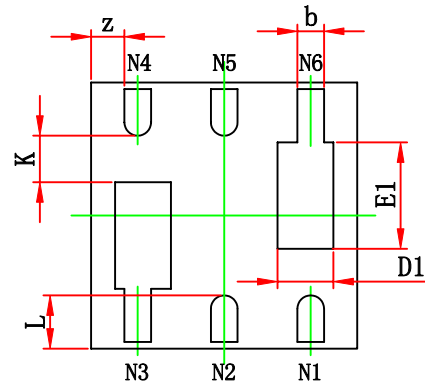
Fig. 4 Typical Capacitance vs. Reverse Voltage



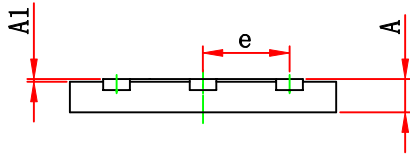
WBFBP-06C(2×2×0.5) PACKAGE OUTLINE DIMENSIONS



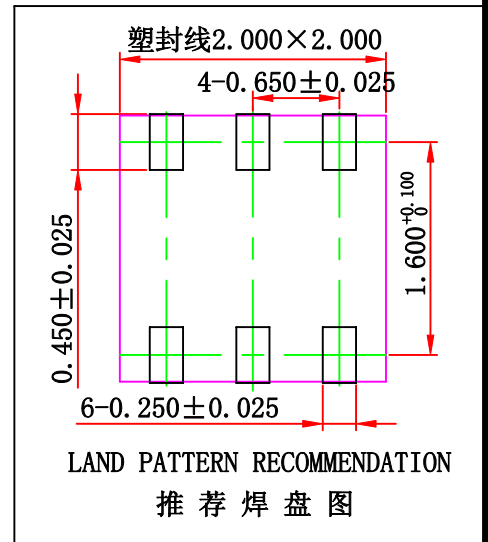
TOP VIEW



BOTTOM VIEW

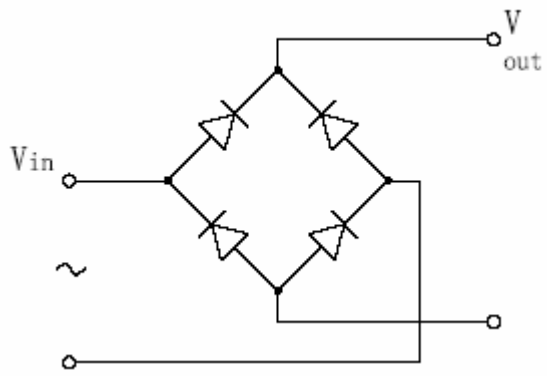


SIDE VIEW



Symbol	Dimensions In Millimeters		Dimensions In Inches	
	Min.	Max.	Min.	Max.
A	0.450	0.550	0.018	0.022
A1	0.000	0.100	0.000	0.004
b	0.150	0.250	0.006	0.010
D	1.900	2.100	0.075	0.083
E	1.900	2.100	0.075	0.083
D1	0.420 REF.		0.017 REF.	
E1	0.800 REF.		0.032 REF.	
e	0.650 TYP.		0.026 TYP.	
L	0.400 REF.		0.016 REF.	
k	0.350 REF.		0.014 REF.	
z	0.500 REF.		0.020 REF.	

APPLICATION CIRCUITS



Bridge rectifiers