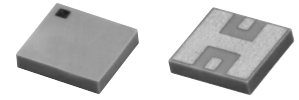


Ceramic High Pass Filter

2300 to 5500 MHz

NEW!

HFTC-19



BLUE CELL™

CASE STYLE: FR933
PRICE: \$3.75 ea. QTY (10-49)

Maximum Ratings

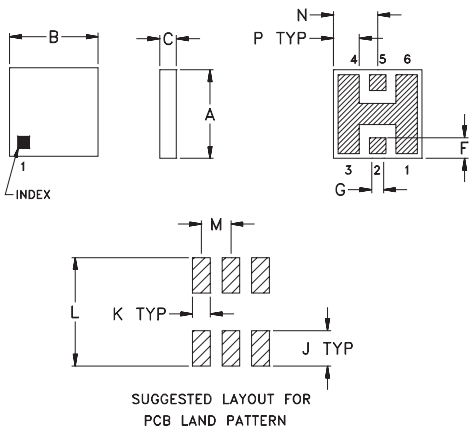
| | |
|-----------------------|----------------|
| Operating Temperature | -55°C to 100°C |
| Storage Temperature | -55°C to 125°C |

Pin Connections

| | |
|--------|---------|
| RF IN | 2** |
| RF OUT | 5** |
| GROUND | 1,3,4,6 |

** RF IN & RF OUT can be interchanged

Outline Drawing

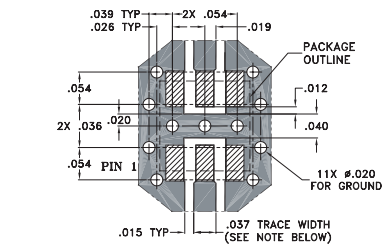


TOLERANCE UNLESS OTHERWISE STATED
2 PLACES DECIMAL: ±.01
3 PLACES DECIMAL: ±.005

Outline Dimensions (inch)

| A | B | C | D | E | F | G | H | J | K | L | M | N | P | wt. |
|------|------|------|---|---|------|------|---|------|------|------|------|------|------|-------|
| .150 | .150 | .028 | — | — | .035 | .028 | — | .060 | .030 | .184 | .050 | .075 | .044 | grams |
| 3.81 | 3.81 | 0.71 | — | — | 0.89 | 0.71 | — | 1.52 | 0.76 | 4.67 | 1.27 | 1.91 | 1.12 | 0.15 |

Demo Board MCL P/N: TB-233 Suggested PCB Layout (PL-112)



NOTE: TRACE WIDTH IS SHOWN FOR ROGERS RO4350 WITH DIELECTRIC THICKNESS .020" ± .0015".
COPPER: 1/2 OZ. EACH SIDE.
FOR OTHER MATERIALS TRACE WIDTH MAY NEED TO BE MODIFIED.

■ DENOTES PCB COPPER LAYOUT
▨ DENOTES COPPER LAND PATTERN FREE OF SOLDERMASK

Features

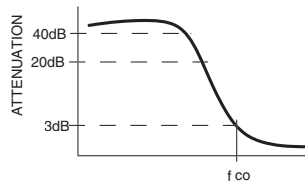
- miniature size, 0.15"X0.15"X.028"
- low profile, .028" height
- low pass band insertion loss, 1.0 dB typ.
- high power handling, 10W

High Pass Filter Electrical Specifications (T_{AMB}=25°C)

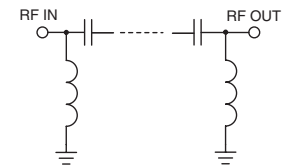
| MODEL NO. | STOP BAND (MHz) | | f _{co} , MHz Nom. (loss 3 dB) Typ. | PASSBAND (MHz) (loss < 1.3 dB) | VSWR (:1) | | POWER INPUT* (W) | MARKING | NO. OF SECTIONS |
|-----------|-----------------|----------------|--|-----------------------------------|---------------|---------------|------------------|---------|-----------------|
| | (loss > 40 dB) | (loss > 20 dB) | | | Stopband Typ. | Passband Typ. | | | |
| HFTC-19 | DC-1450 | 1650 | 1995 | 2300-5500 | 18 | 1.3 | 10 | HF6 | 7 |

* Derate linearly to 4W at 100°C ambient

typical frequency response



schematic



Typical Performance Data at 25°C

| Frequency (MHz) | Insertion Loss (dB) | VSWR (:1) |
|-----------------|---------------------|-----------|
| 1.00 | 103.75 | 436.58 |
| 500.00 | 49.23 | 81.78 |
| 1000.00 | 42.91 | 64.39 |
| 1450.00 | 54.47 | 47.42 |
| 1650.00 | 27.32 | 32.07 |
| 1995.00 | 4.42 | 3.50 |
| 2300.00 | 0.94 | 1.19 |
| 3600.00 | 0.51 | 1.11 |
| 4000.00 | 0.52 | 1.16 |
| 5500.00 | 0.66 | 1.25 |

