



SAW Components

Data Sheet K 9356 M





SAW Components

K 9356 M

IF Filter for Audio Applications

38,90 MHz

Data Sheet

Standard

- B/G
- D/K
- I
- L

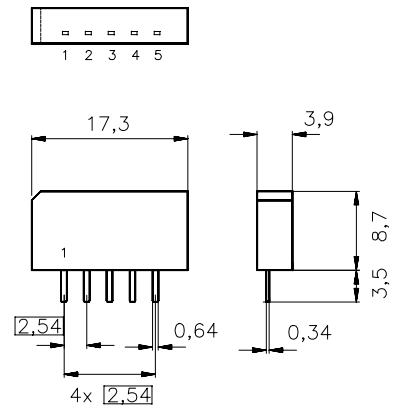
Features

- TV IF audio filter with passband for sound carriers at 32,40 MHz (D/K, L), 32,90 MHz (I) and 33,40 MHz (B/G)

Terminals

- Tinned CuFe alloy

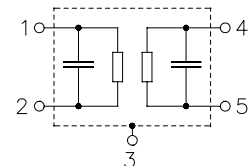
Plastic package **SIP5K**



Dimensions in mm, approx. weight 1,0 g

Pin configuration

- 1 Input
- 2 Input - ground
- 3 Chip - carrier ground
- 4 Output
- 5 Output



Type	Ordering code	Marking and package according to	Packing according to
K 9356 M	B39389-K9356-M100	C61157-A1-A15	F61074-V8067-Z000

Maximum ratings

Operable temperature range	T_A	-25/+65	°C	
Storage temperature range	T_{stg}	-40/+85	°C	
DC voltage	V_{DC}	5	V	between any terminals
AC voltage	V_{pp}	10	V	between any terminals



SAW Components

K 9356 M

IF Filter for Audio Applications

38,90 MHz

Data Sheet

Characteristics

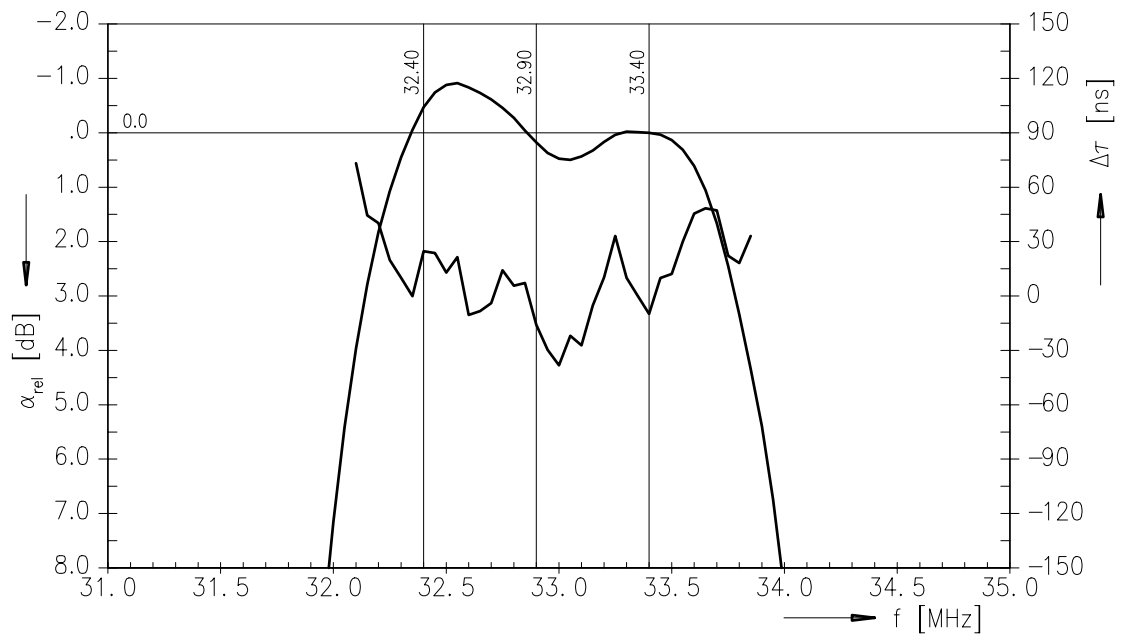
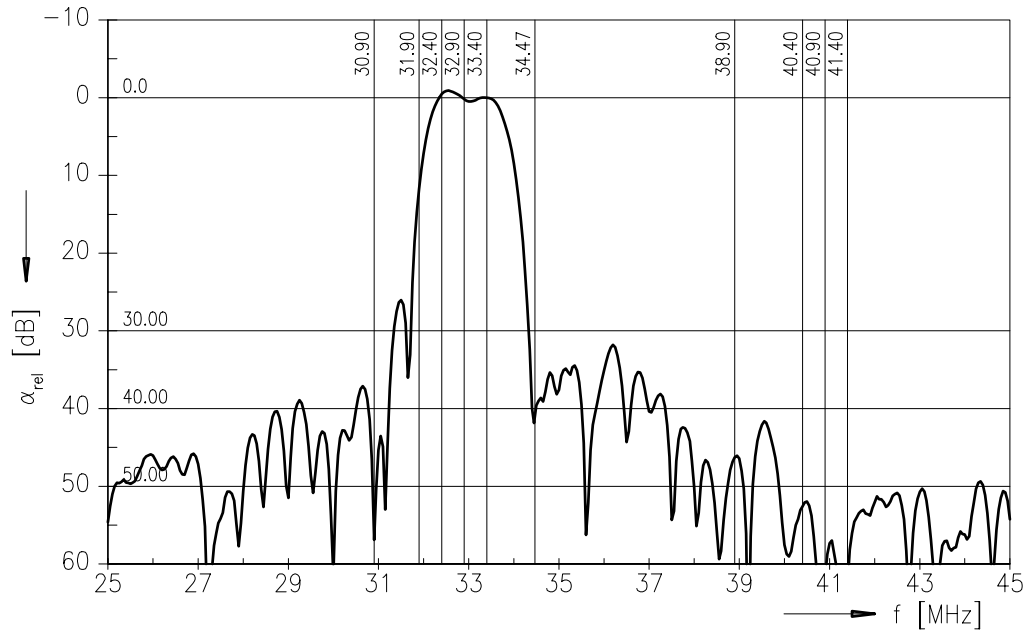
Reference temperature: $T_A = 25\text{ °C}$
 Terminating source impedance: $Z_S = 50\ \Omega$
 Terminating load impedance: $Z_L = 2\text{ k}\Omega \parallel 3\text{ pF}$

		min.	typ.	max.	
Insertion attenuation					
	α				
Reference level for the following data	33,40 MHz	9,1	10,6	12,1	dB
Relative attenuation					
	α_{rel}				
Sound carrier	32,40 MHz	-1,4	-0,4	0,6	dB
	32,90 MHz	-0,9	0,1	1,1	dB
	33,05 MHz	-0,5	0,5	1,5	dB
Picture carrier	38,90 MHz	40,0	47,0	—	dB
Color carrier	34,47 MHz	33,0	40,0	—	dB
Adjacent picture carrier	30,90 MHz	40,0	55,0	—	dB
	31,90 MHz	9,5	12,0	—	dB
Adjacent sound carrier	40,40 MHz	46,0	54,0	—	dB
	40,90 MHz	46,0	61,0	—	dB
	41,40 MHz	46,0	60,0	—	dB
Lower sidelobe	25,00 ... 30,90 MHz	34,0	38,0	—	dB
Upper sidelobe	38,90 ... 75,00 MHz	35,0	41,0	—	dB
Impedance at 33,40 MHz					
Input:	$Z_{IN} = R_{IN} \parallel C_{IN}$	—	0,7 \parallel 11,6	—	k Ω \parallel pF
Output:	$Z_{OUT} = R_{OUT} \parallel C_{OUT}$	—	2,3 \parallel 2,6	—	k Ω \parallel pF
Temperature coefficient of frequency	TC_f	—	-72	—	ppm/K



Data Sheet

Frequency response





SAW Components

K 9356 M

IF Filter for Audio Applications

38,90 MHz

Data Sheet

Published by EPCOS AG

Surface Acoustic Wave Components Division, SAW CE MM PD

P.O. Box 80 17 09, D-81617 München

© EPCOS AG 2001. All Rights Reserved.

As far as patents or other rights of third parties are concerned, liability is only assumed for components per se, not for applications, processes and circuits implemented within components or assemblies.

The information describes the type of component and shall not be considered as assured characteristics.

Terms of delivery and rights to change design reserved.

For questions on technology, prices and delivery please contact the sales offices of EPCOS AG or the international representatives.

Due to technical requirements components may contain dangerous substances. For information on the type in question please also contact one of our sales offices.